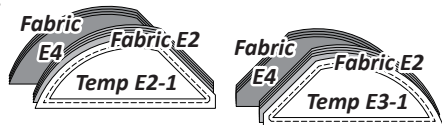


Step 6: Use *Templates E2-1* and *E3-1* to cut (4) pieces of each template from each fabric. Place the *E2-1* template pieces with the foundation papers for *Unit E2* and the *E3-1* template pieces with *Unit E3* in *Bag #E2*.

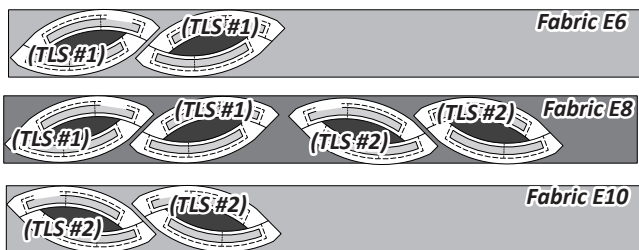
► **Fabrics E6, E8 & E10: (TLS) #1 & #2**



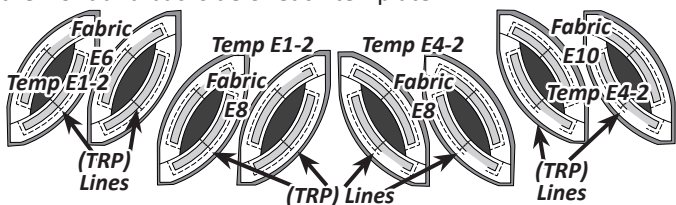
- *Fabric E6: Cut (1) 4-1/2" x 42" strip.*
- *Fabric E8: Cut (1) 4-1/2" x 42" strip.*
- *Fabric E10: Cut (1) 4-1/2" x 42" strip.*

NOTE - Cut Size: *TLS #1 and #2 say to cut a 9" Strip. However, to allow you to use different fabrics for each, these instructions use 4-1/2" strips.*

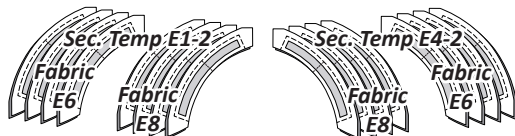
Step 1: Position each strip facing *right-side up*. A small amount of repositionable fabric glue is placed on the backside of each *Unit E1, (TLS) #1* and *Unit E4, (TLS) #2*. Place the backside of each layout sheet against the right-side of the fabric. Place (2) of *(TLS) #1* with each of *Fabrics E6 & E8*, then place (2) of *(TLS) #2* with each of *Fabrics E8 & E10*. Cut (1) piece matching the size and shape of each layout sheet.



Step 2: Cut around each layout sheet leaving about 3/8" of excess fabric along each edge. Set the stitch length on your machine to sew your preferred basting stitch. Sew the (TRP) Lines on each paper. After the (TRP) lines are sewn, trim the threads on the front and backside of each template.



Step 3: Trim the excess fabric off around the perimeter of each layout sheet, then cut the individual template sections apart on Cut Lines 1 & 2.



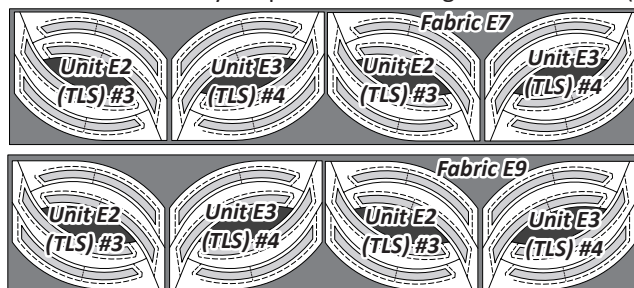
Step 4: After the trimming is done, place the *Sec. 2, Temps E1-2* with *Unit E1* and the *Sec. 2, Temps E4-2* in *Bag #E1* for storage.

► **Fabrics E7 & E9: (TLS) #3 & #4**

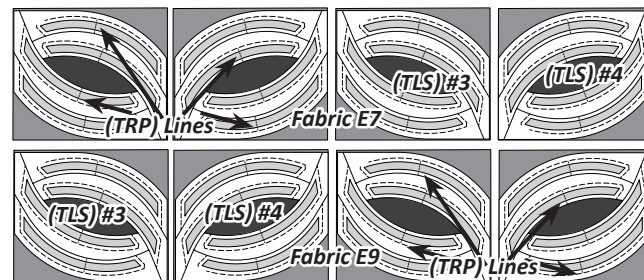
- *Fabric E7: Cut (1) 9" x 42" strip.*
- *Fabric E9: Cut (1) 9" x 42" strip.*

Step 1: Position each strip in a single layer facing *right-side-up*. Place a small amount of repositionable fabric glue on the backside of each *Unit E2, (TLS) #3* and *Unit E3, (TLS) #4*. Place the backside of each layout sheet against the right-side of the fabric. Place (2) each of *(TLS) #3 & #4* with each of *Fabrics E7 & E9*.

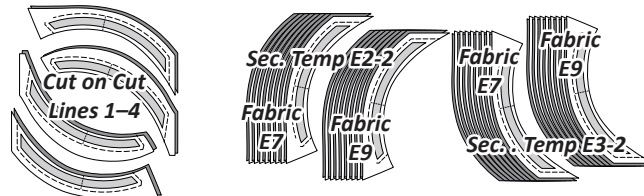
Step 2: Cut (1) square per layout sheet. Set the stitch length on your machine to sew your preferred basting stitch. Sew the (TRP)



Lines on each paper. After the (TRP) lines are sewn, trim the threads on the front and backside of each template.



Step 3: Trim the excess fabric off around the perimeter of each layout sheet, then cut the individual template sections apart by cutting along each *Cut Line* in numerical order. Place the *Sec. 2 Temp's E2-2* with *Unit E2* and the *Sec. 2 Temp's E3-2* with *Unit E3* in *Bag #E2*.



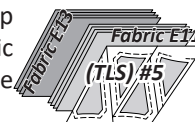
► **Fabrics E11, E13 & E15: (TLS) #5 & #6**

- *Fabric E11: Cut (1) 5-1/2" x 42" strip.*
- *Fabric E13: Cut (2) 5-1/2" x 42" strips.*
- *Fabric E15: Cut (1) 5-1/2" x 42" strip.*

Step 1: Stack (1) each of *Fabrics E11 and E13* strips *right-side up* in the order listed, starting with *Fabric E13* at the bottom. Use *Units E5 & E9 (TLS) #5* to cut (4) pieces from each fabric.



Step 2: Re-stack the fabric pieces: from bottom to top—(4) ea. *Fabric E13 & Fabric E11*. Place *(TLS) #5* on top of the stack. Slice through the paper and fabric on each *Cut Line* in numerical order to separate the section templates.



Step 3: Clip the templates to the fabric beneath and place in *Bag #E3* with the foundation papers for *Units E5 & E9*.

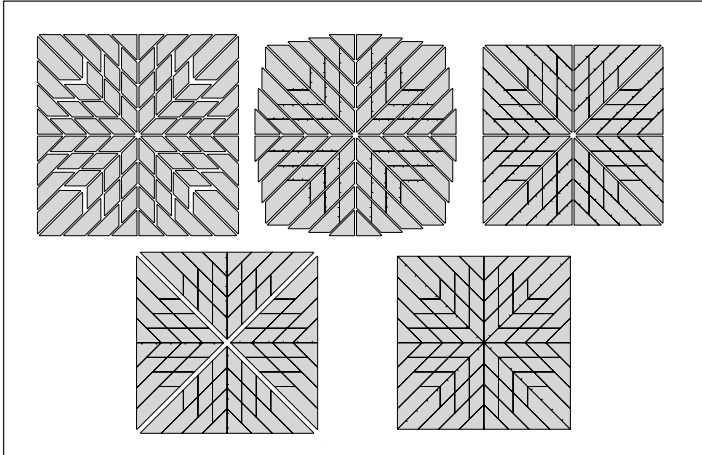


QUILT ASSEMBLY

Layout Page: Layout Pages are printed on newsprint and include extra assembly, pressing and fabric information, if appropriate, to help you quickly visualize how to complete assembly instructions and color layouts for specific projects. These are not cut apart, but left as printed for your reference.

Remove any remaining foundation paper from all the units at this time. Set your machine to sew a quarter-inch seam allowance. Reference the Layout Newsprint LP 145 for Assembly Graphics 1–5. The graphics are shown assuming you would be looking at the front side of the quilt. The final assembly steps for the expanded size of the quilt are shown on Pages 41 & 42.

► (1) LP 145



Assembly Graphic 1, LP 145: Arrange the units in Group A/Round A, Group A/Round B, Group A/Round C, and border group E on your design wall. Use your quilt pattern cover sheet or your Quiltster image as a guide for which diamonds go where. Quiltster gives you the ability to explore different options if you want to see what it looks like before you decide. Use the Rotate button and Unlock feature to play with block orientation for the perfect look for your quilt! Also, at this point, pay attention to your Rounds—(8) blocks are used for Round A, (16) blocks are used for Round B, and (24) blocks are used for Round C.

Block Placement and Rotation: You can choose to rotate the diamond blocks in Round A, B, and C or move them around if you wish for different looks! Use Quiltster to see the overall impact before you sew everything together. Remember, if you are using a diamond option where there is a sashing strip, only certain sashing strips can be used for Round B. Once these are in place, you don't want to move them. If you do move these, it will make assembly considerably harder and increase the number of stacked seams. Quiltworx deliberately designed these out of the 8-colored and 16-colored diamond blocks by alternating the sashing assembly for

Round B. If you do need to switch a Round B block with a Round A or C block, we recommend removing the sashing from both blocks and resewing these seams with the correct sashing strips for the Round you are pairing with. It will prevent you much larger frustrations later in the assembly process. If you do not have a block with sashing, feel free to place them wherever you like!

Assembly Graphic 2, LP 145: Join the units in rows as shown. Press the seams in the direction of the arrows.

Assembly Graphic 3, LP 145: Join the rows to complete (8) triangles. When joining rows, it's easiest to begin with the longest row in each triangle, add the second-longest row, etc. Press all seams as shown.

Assembly Graphic 4, LP 145: *If you are making the 118"-square version, stop here—turn to Page 41 instead.* Join each pair of triangles to make (4) large triangles. Press all seams as shown.

NOTE - Tip for Stacked Seams: Please note that depending on which blocks you choose to make, you may encounter stacked seams as you assemble the quilt from Step 4 on. This is only the case for some diamonds. But, if it happens, just take care to match the intersections carefully. When you are completing the final assembly seams, start sewing from the center, then when you approach the first stacked seam, follow Judy's stacked seam technique videos on Youtube. There is a stacked seam video for the instance where the seams are stacked toward you, and a video for when the stacked seams are facing away from you. Watch both videos and then choose the one that fits the circumstance that fits your situation the best.

► 100" Layout

