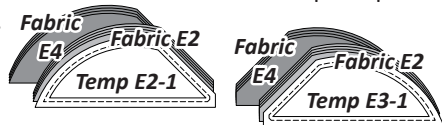


**Step 6:** Use *Templates E2-1* and *E3-1* to cut (4) pieces of each template from each fabric. Place the *E2-1* template pieces with the foundation papers for *Unit E2* and the *E3-1* template pieces with *Unit E3* in *Bag #E2*.

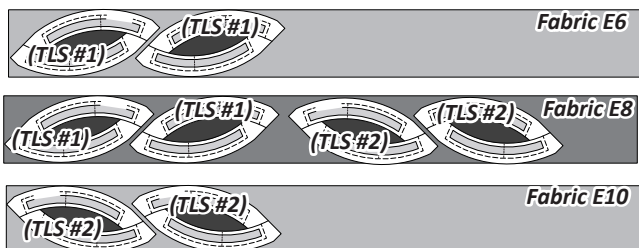
► **Fabrics E6, E8 & E10: (TLS) #1 & #2**



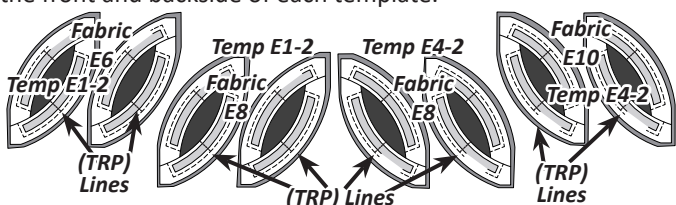
- *Fabric E6:* Cut (1) 4-1/2" x 42" strip.
- *Fabric E8:* Cut (1) 4-1/2" x 42" strip.
- *Fabric E10:* Cut (1) 4-1/2" x 42" strip.

**NOTE - Cut Size:** *TLS #1* and *#2* say to cut a 9" Strip. However, to allow you to use different fabrics for each, these instructions use 4-1/2" strips.

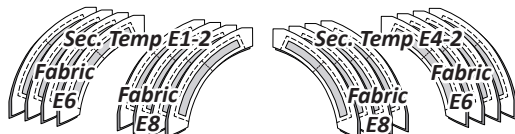
**Step 1:** Position each strip facing *right-side up*. A small amount of repositionable fabric glue is placed on the backside of each *Unit E1, (TLS) #1* and *Unit E4, (TLS) #2*. Place the backside of each layout sheet against the right-side of the fabric. Place (2) of *(TLS) #1* with each of *Fabrics E6 & E8*, then place (2) of *(TLS) #2* with each of *Fabrics E8 & E10*. Cut (1) piece matching the size and shape of each layout sheet.



**Step 2:** Cut around each layout sheet leaving about 3/8" of excess fabric along each edge. Set the stitch length on your machine to sew your preferred basting stitch. Sew the (TRP) Lines on each paper. After the (TRP) lines are sewn, trim the threads on the front and backside of each template.



**Step 3:** Trim the excess fabric off around the perimeter of each layout sheet, then cut the individual template sections apart on Cut Lines 1 & 2.



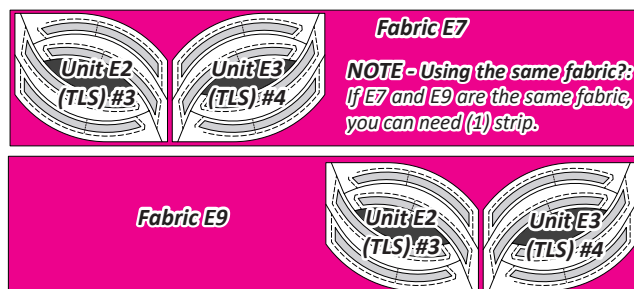
**Step 4:** After the trimming is done, place the *Sec. 2, Temps E1-2* with *Unit E1* and the *Sec. 2, Temps E4-2* in *Bag #E1* for storage.

► **Fabrics E7 & E9: (TLS) #3 & #4**

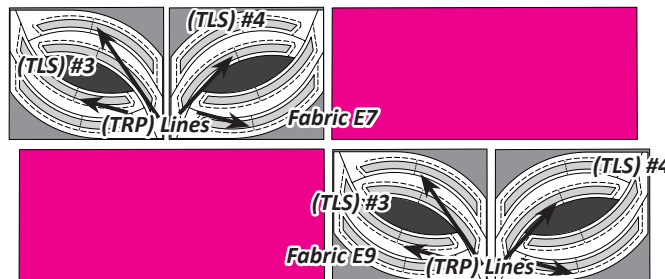
- *Fabric E7:* Cut (1) 9" x 42" strip.
- *Fabric E9:* Cut (1) 9" x 42" strip.

**Step 1:** Position each strip in a single layer facing *right-side-up*. Place a small amount of repositionable fabric glue on the backside of each *Unit E2, (TLS) #3* and *Unit E3, (TLS) #4*. Place the backside of each layout sheet against the right-side of the fabric. Place (1) each of *(TLS) #3 & #4* with each of *Fabrics E7 & E9*.

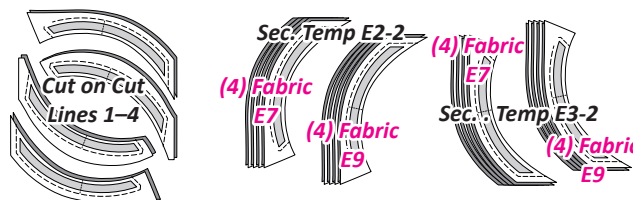
**Step 2:** Cut (1) square per layout sheet. Set the stitch length on your machine to sew your preferred basting stitch. Sew the (TRP)



Lines on each paper. After the (TRP) lines are sewn, trim the threads on the front and backside of each template.



**Step 3:** Trim the excess fabric off around the perimeter of each layout sheet, then cut the individual template sections apart by cutting along each *Cut Line* in numerical order. Place the *Sec. 2 Temp's E2-2* with *Unit E2* and the *Sec. 2 Temp's E3-2* with *Unit E3* in *Bag #E2*.



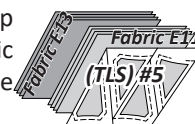
► **Fabrics E11, E13 & E15: (TLS) #5 & #6**

- *Fabric E11:* Cut (1) 5-1/2" x 42" strip.
- *Fabric E13:* Cut (2) 5-1/2" x 42" strips.
- *Fabric E15:* Cut (1) 5-1/2" x 42" strip.

**Step 1:** Stack (1) each of *Fabrics E11 and E13* strips *right-side up* in the order listed, starting with *Fabric E13* at the bottom. Use *Units E5 & E9 (TLS) #5* to cut (4) pieces from each fabric.



**Step 2:** Re-stack the fabric pieces: from bottom to top—(4) ea. *Fabric E13 & Fabric E11*. Place *(TLS) #5* on top of the stack. Slice through the paper and fabric on each *Cut Line* in numerical order to separate the section templates.



**Step 3:** Clip the templates to the fabric beneath and place in *Bag #E3* with the foundation papers for *Units E5 & E9*.

