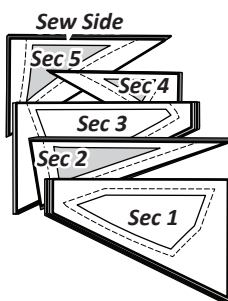


UNIT B4, BAG #F-B4, SNOWFLAKE F

Position the templates and fabric pieces in numerical order facing *right-side up*, with the *sew-sides* aligned at the top. Sec. 1 does not have a sew side.

Stacking: The stacking process begins with the largest Sec. # on the bottom. The pieces are stacked in reverse order finishing with Sec. 1 on top.

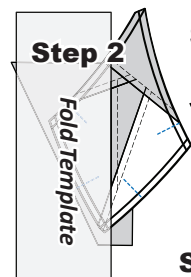


FOUNDATION PAPER PIECING: UNIT B4

NOTE - Tracing the Dashed Lines: Trace the dashed lines to help with placement of the fabrics for each section.



Step 1: The first piece of fabric is placed *wrong-side-up* on your table, then slid under Sec. 1 and glued in place. Repeat for all units.

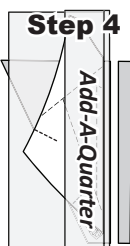


Step 2: Place the fold template over the top of Sec. 1. Line the edge up with the solid black line marked Line 1.

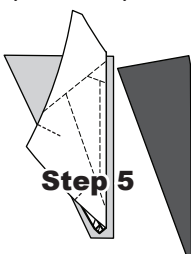
Step 3: Fold the paper back over the top of the fold template.

Step 3

Step 4: Place the *Add-A-Quarter*

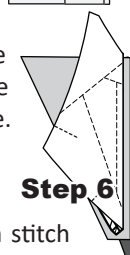


next to the folded paper and trim the fabric with your rotary cutter.

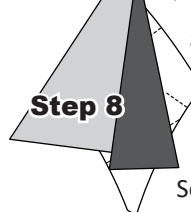


Step 5: Place the fabric piece for Sec. 2, *right-side up* next to the folded back paper.

Step 6: Lift the paper, slide the fabric under Sec. 1, and line the sew-side up with the trimmed edge. Repeat **Steps 2-6** for all units.



Step 7: Sew on Line 1, on all units. Start and stop about 1/8" past the beginning and the end of each stitch line, making it possible to trim the threads with your *Add-A-Quarter* Ruler.

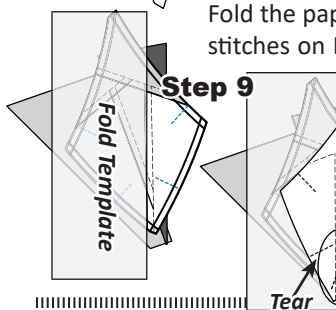


Step 8: Loosen the glue under Sec. 1, then press the fabric pieces open on the backside of each paper.

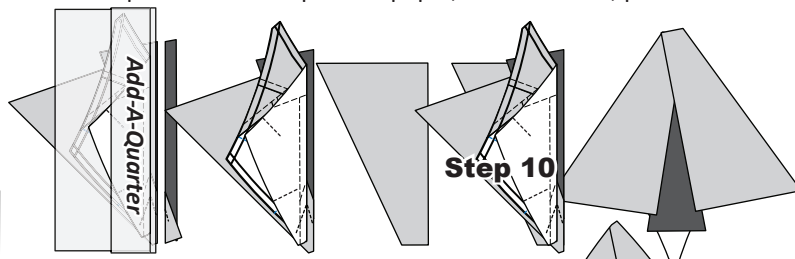
Step 9: Position the fold temp. over the top of Sections 1 and 2, lining the edge up with Line 2. Fold the paper back and tear the paper along the stitches on Line 1. Stop tearing when you hit the fold template.

Step 9

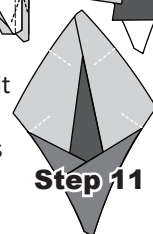
Step 10: Trim the fabric with the *Add-A-Quarter* ruler, position the third fabric piece *right-side up* next to the paper. Lift the paper and slide the fabric under



Sec. 3 in position. Then open the paper, sew on Line 2, press.



Step 11: Add the TRP lines and trim the unit on the outside solid lines. Do not remove the foundation paper at this time. Place the pieces into Bag #B4.



Background Cutting T-Temp D1-D4

Ziploc Storage Bags: You will need (1) bag to complete the organization for these T-Templates. Label it as follows:

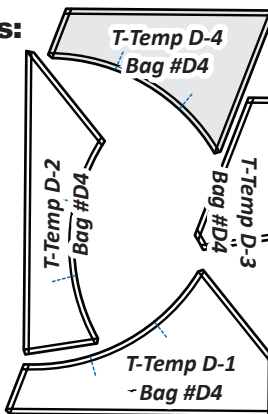
- Snowflake Background T-Templates: T-Temps D-1 to D-4

► Preparing the T-Templates:

T-Templates: T-Templates D1-D4 on TP 319 were placed in to the Snowflake Background T-Templates bag already, as part of instructions on Page 8. If you have not already done so, cut the T-Templates out on the solid line.

► Snowflake Background Fabric Chart

The **Background Unit Chart** includes yardage, Fabric Numbers, and a reference to which fabrics go with each T-Template. This table is your guide for not only selecting your own colors, but keeping you organized. Don't forget to cut a swatch of your chosen fabric to paste in the box in the Assigned Colors column! This will help you stay organized!



Background Unit Chart

FABRIC #	YARDAGE INCH	ASSIGNED COLOR
Fabric D1 T-Temp D-1, D-2, & D-3	1 yd or (34")	FABRIC SWATCH
Fabric D2 Block T-Temp D4	1/2 yd or (17-1/2")	FABRIC SWATCH

► Fabric D1 (T-Temp D-1, D-2, D-3)

Step 1: Cut (4) 8-1/2" by 42" strips from Fabric D1.

