

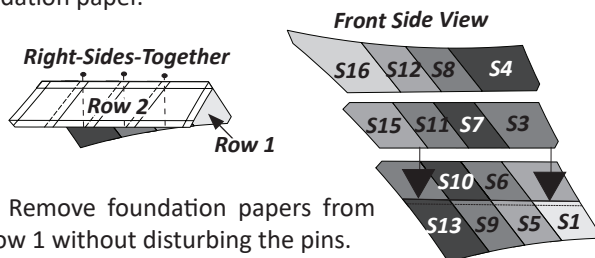
## Check Color Placement:

**NOTE - Check Color Placement:** Pay close attention to the orientation of the color. Double-check that the colors and rows are positioned correctly before sewing the strip sets together.

**NOTE - Making Corrections:** If you find a color has been sewn in the wrong position, you can fix it. At this stage the pieces have been trimmed to the size they would have been if traditional pieced. So, to correct the order, pick out the seams around the incorrect section. Use the existing pieces to cut new template pieces from the correct colors, then replace the diamond sections using traditional piecing techniques.

## Attaching Row 2 to Row 1:

**Step 1:** Position Row 2 on top of Row 1 with **right-sides together**. Row 1 should be on the bottom and Row 2 on the top. Match and pin at each intersection where the sew lines cross on the foundation paper.

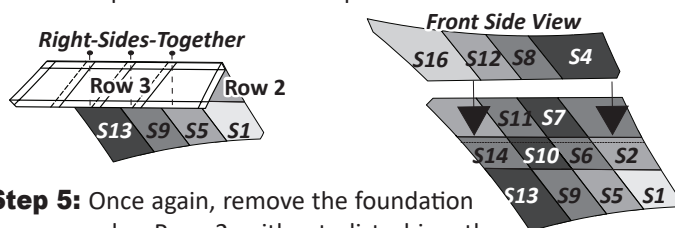


**Step 2:** Remove foundation papers from under Row 1 without disturbing the pins.

**Step 3:** Sew the two rows together with Row 1 next to the feed dogs. Use the quarter-inch line on the paper as your guide. Press the seam allowance toward Row 1 as indicated by the arrows.

## Attaching Row 3 to Row 2:

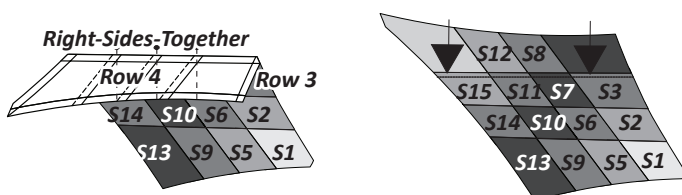
**Step 4:** Position Row 3 on top of Row 2, **right-sides together**. Match and pin the rows at each quarter-inch intersection.



**Step 5:** Once again, remove the foundation papers under Row 2 without disturbing the pins. Sew the rows together with Row 2 next to the feed dogs. When the sewing is complete, press the seam toward Row 2.

## Attaching Row 4 to Row 3:

**Step 6:** Position Row 4 on top of Row 3 with **right-sides together**. Match and pin both pieces together at each cross-section.

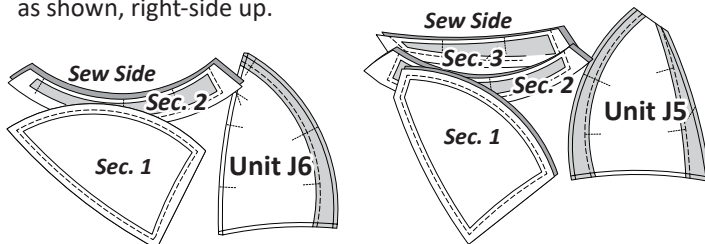


**Step 7:** Once again, remove the papers from under Row 3. Sew the rows together with Row 3 next to the feed dogs. After sewing, remove the foundation paper from under Row 4 and press the seam allowance toward Row 4.

## STACKING: UNITS J5 & J6, BAGS #J2 & J3

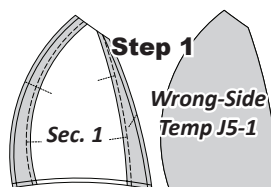
**TRP Lines:** Ensure the (TRP) lines have been sewn on each of your T-Templates.

**Stacking:** Arrange templates and fabric pieces for Unit J1 and J2 as shown, right-side up.

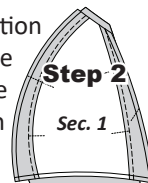


## CURVED PAPER PIECING, UNIT J5

**Step 1:** Locate Section 1 on the Unit J5 foundation paper. Apply a small amount of fabric glue to the back of the paper under Section 1. Place the first fabric piece for Section 1 **wrong-side-up** on your table.



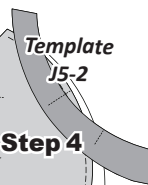
**Step 2:** Lift the foundation paper and slide the fabric underneath Section 1. Press to adhere the fabric to the paper. Repeat Steps 1 and 2 for each foundation paper.



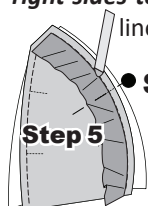
**Step 3:** Place the foundation papers printed side up at your machine. Set your stitch length at your preferred basting stitch length [see more information about sewing (TRP) lines under the General Piecing Instructions on Page 5]. Sew the full length of **Basting Stitch Lines 1 & 3** and the **(4) (TRP) Lines** printed within Section 1 on the foundation paper.



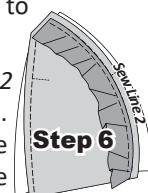
**Step 4:** Remove the paper from **Template J5-2**. Position the template on top of **Unit J5** with **right-sides-together**, aligning the center (TRP) line as shown.



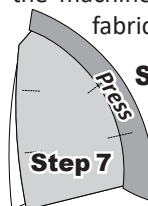
**Step 5:** Secure with a pin, then pin the remaining (TRP) lines and glue the raw edges of **Temp J5-2** along the basting line to secure edges.



**Step 6:** Sew directly on **Sew Line 2** with the paper facing up and fabric on the bottom. To prevent puckers, lift the paper about 1/2" above the machine surface as you sew. This allows the fabric to move smoothly over the feed dogs.



**Step 7:** After sewing, press the fabric on the back of the paper to assure the coverage of Section 2.



**Step 8:** Remove the paper from **Template J5-3**. Position the template on top of **Unit J5** with **right-sides-together**.

