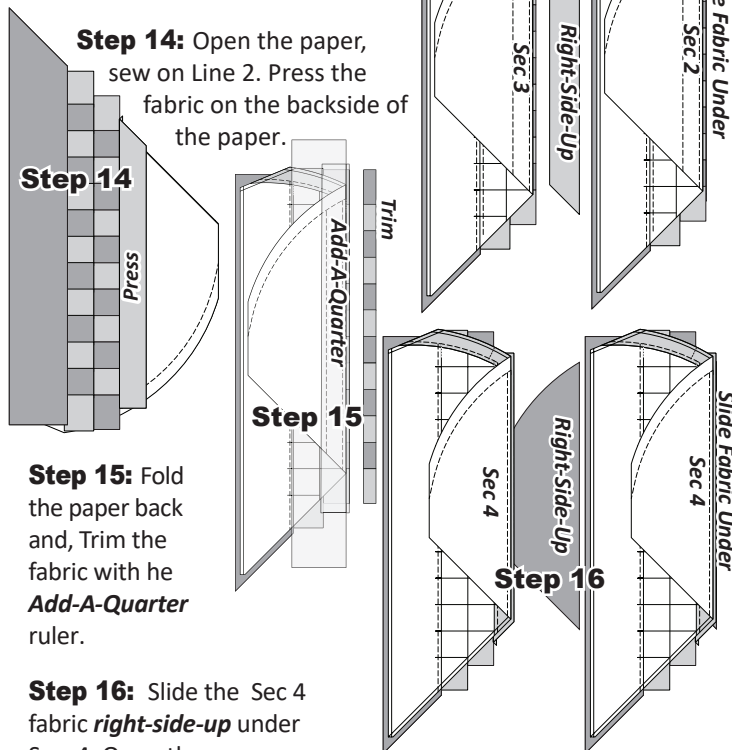


Step 13: Position the fabric piece for Sec. 3 *right-side-up* and slide it under Sec. 3, aligning it with the trimmed seam allowance.



Step 15: Fold the paper back and, Trim the fabric with the *Add-A-Quarter* ruler.

Step 16: Slide the Sec 4 fabric *right-side-up* under Sec. 4. Open the paper, *sew on Line 3* and press.

Sewing Basting and TRP Lines

Step 17: Adjust your stitch length, sew *Basting Line 4* and the TRP lines (indicated by the arrow). After sewing, trim threads on both the fabric and paper side of your unit.

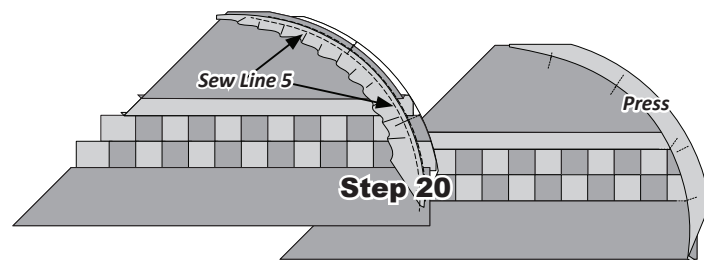
Step 18: Place Temp H1 *right-side-up* along the top edge of Unit H1 and remove the foundation paper.

Aligning and Gluing Templates

Step 19: Place *Temp H1* facing *wrong-side-up* on top Unit H1, Match and pin the TRP Lines, then glue the raw edges of *Temp H1* along the basting stitch.

Curved Sewing (Sew Line 5)

Step 20: Sew directly on *Sew Line 5*, with the paper facing up and fabric on the bottom. To prevent puckers, lift the paper about $\frac{1}{2}$ " above the machine surface as you sew. This allows the fabric to move freely over the feed dogs. After sewing, press the fabric on the back of the paper to cover Section 5. (Graphics shown at the top in next column).



Trimming

Step 21: Trim the excess fabric along the curved edges around the perimeter of each foundation unit, following the printed seam allowance line.

Step 22: Once the paper is trimmed, place the unit fabric-side-up and fold back the Section 2 fabric.

Step 23: Trim the excess paper and fabric along the basting stitches to create a clean scant $\frac{1}{4}$ " seam allowance on the backside of the unit after the paper is removed. For basic Illustrations and instructions on how to complete the trimming, refer back to the Introduction Booklet under curved paper piecing.

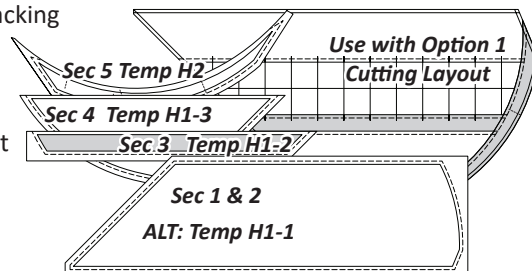
UNITS H2, H3, & H4,

Repeating Process:

Repeat the stacking and paper-piecing process used for Unit H1 to assemble Unit H4. Similarly, Units H2 and H3 follow the same method but involve a single sub-unit and fewer templates. The instructions for adding veins remain consistent across all units and options.

STACKING: OPTION 1

Stacking: Stacking order for Unit H1. These templates are used for Option 1. Since Unit H4 templates are mirrored images of Unit H1, the stacking order remains the same. Therefore, graphics are not provided for Units H4.



Option 1: ALT Templates H1-1 & H1-2 are designed to replace Sec 1, (Checkerboard) and Sec 2 on both Units H1 & H4. The remaining piecing instructions begin with Step 11, under the Foundation Paper piecing Instructions on the previous page.

