

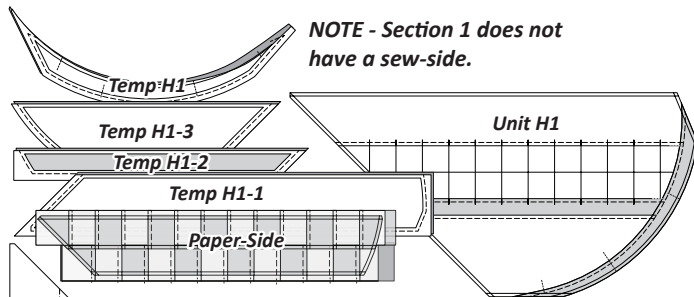
Sub Units H4A - H4B:

The previous steps you completed for Sub Units H1 will be repeated for Sub Units H4A & H4B.

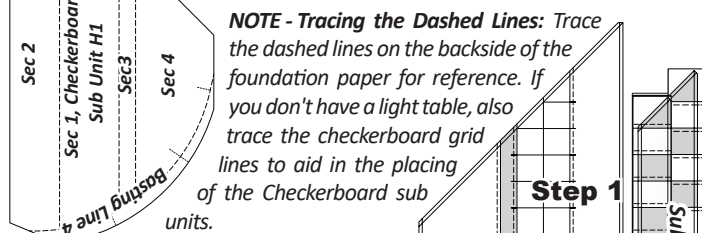
Step 4: Remember do not trim the Sub Units. The Sub Units are not trimmed. The excess fabric is needed to help with placement when beginning the foundation paper piecing. Leave the foundation paper on Sub Units H1B and H4B until you are ready to begin the paper piecing. For now place the Sub Units with their respective foundation units in Bag H1.

STACKING: UNIT H1 & H4

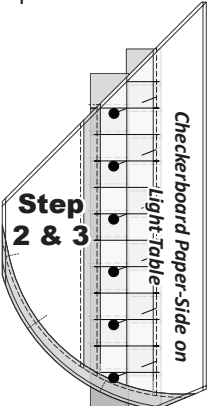
Stacking: Arrange the templates and fabrics for Unit H1A in numerical order, *right-side-up* with *sew-sides* aligned at the top. Include the checkerboard Sub-Units H1A for Sec 1. Since Unit H4 templates are mirrored images of Unit H1, the stacking order remains the same. Therefore, graphics are not provided for Units H4.



FOUNDATION PAPER PIECING: UNIT H1



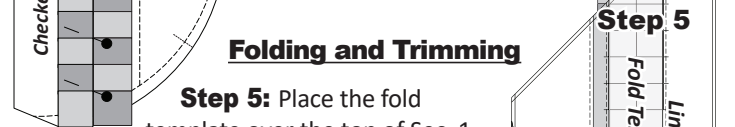
Step 1: Place the checkerboard sub-units wrong-side-up next to the foundation unit.



Step 2: Apply a small amount of fabric glue on the *backside* of the paper under Sec. 1.

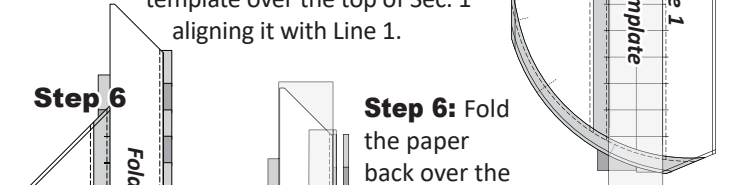
Step 3: Using a Light Table: Place the foundation paper *printed-side-up* on your light table. Position it over the checkerboard sub-units aligning the sew lines with the cross-hairs printed on the foundation papers. Secure the alignment with pins.

Step 4: Without a Light Table: Place the foundation paper wrong-side-up on your table. You can use an awl or stiletto to poke small holes at each intersection printed on the foundation paper. Apply a small amount of repositionable glue to the backside of the paper under section 1. Match the intersections to the checkerboard sub-units, pinning them in place for proper alignment.



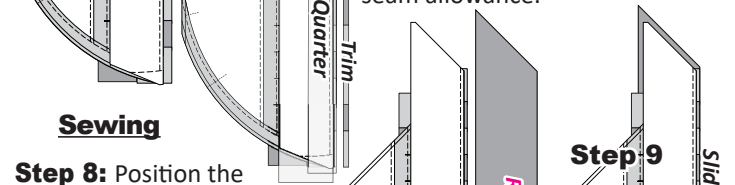
Folding and Trimming

Step 5: Place the fold template over the top of Sec. 1 aligning it with Line 1.



Step 6: Fold the paper back over the fold template.

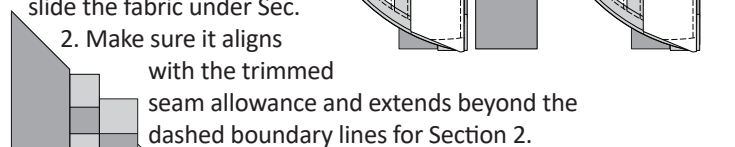
Step 7: Use the Add-A-Quarter ruler to trim the fabric to a 1/4" seam allowance.



Sewing

Step 8: Position the fabric piece for Sec. 2, *right-side-up* next to the folded back paper.

Step 9: Lift the foundation paper and slide the fabric under Sec. 2. Make sure it aligns with the trimmed seam allowance and extends beyond the dashed boundary lines for Section 2.

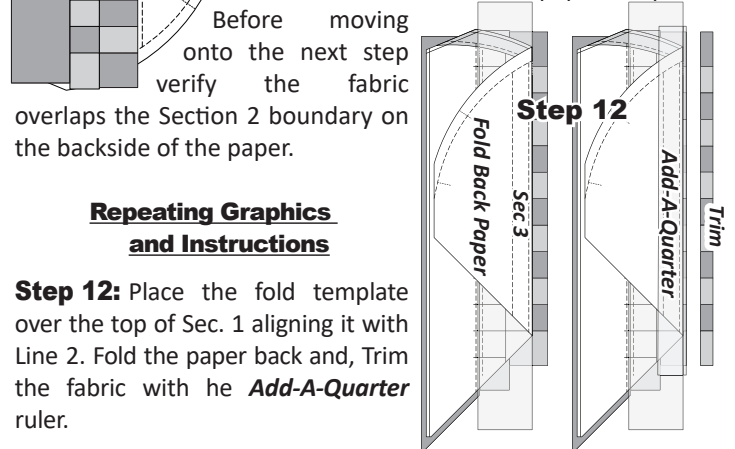


Step 10: Open the paper and sew on Line 1, starting and stopping 1/8" beyond the sew line. Complete the sewing on each unit 1-8.

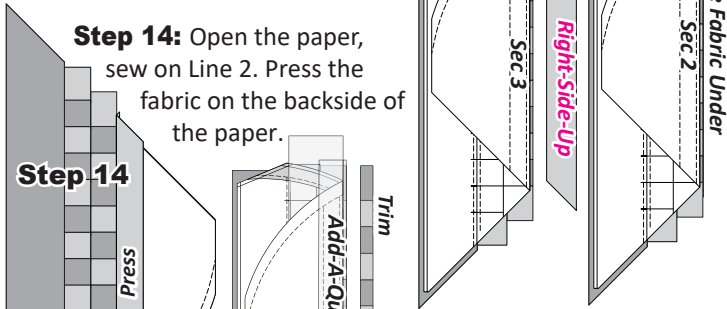
Step 11: Fold the fabric over to cover Section 2, on the foundation paper and press. Before moving onto the next step verify the fabric overlaps the Section 2 boundary on the backside of the paper.

Repeating Graphics and Instructions

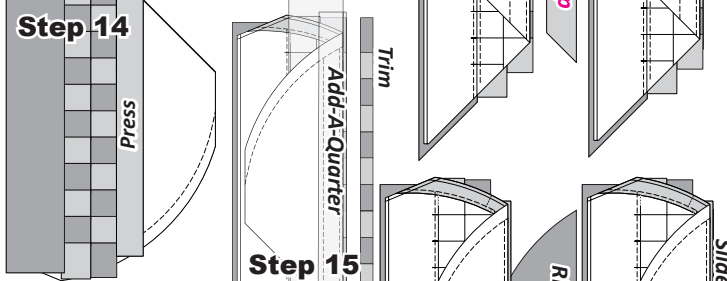
Step 12: Place the fold template over the top of Sec. 1 aligning it with Line 2. Fold the paper back and, Trim the fabric with the *Add-A-Quarter* ruler.



Step 13: Position the fabric piece for Sec. 3 *right-side-up* and slide it under Sec. 3, aligning it with the trimmed seam allowance.

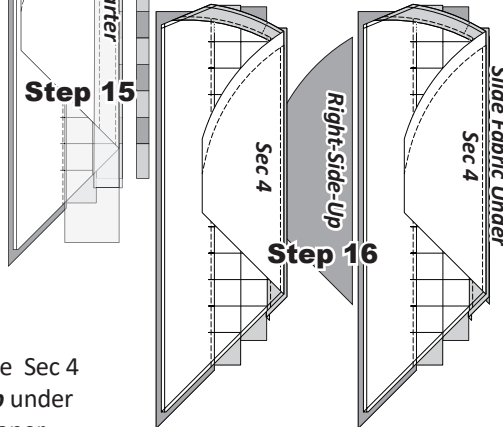


Step 14: Open the paper, sew on Line 2. Press the fabric on the backside of the paper.



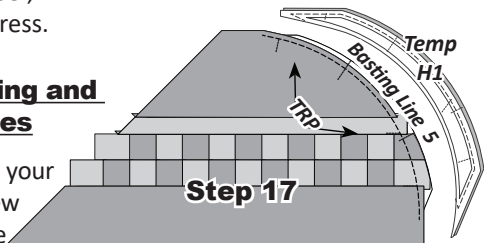
Step 15: Fold the paper back and, Trim the fabric with the *Add-A-Quarter* ruler.

Step 16: Slide the Sec 4 fabric *right-side-up* under Sec. 4. Open the paper, sew on Line 2 and press.



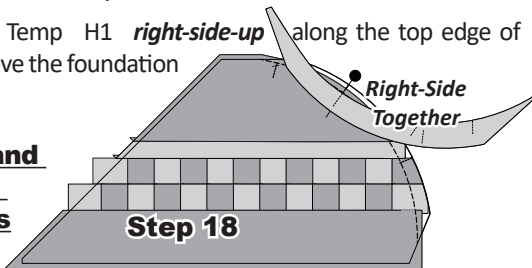
Sewing Basting and TRP Lines

Step 17: Adjust your stitch length, sew *Basting Line 4* and the TRP lines (indicated by the arrow). After sewing, trim threads on both the fabric and paper side of your unit.



Step 18: Place Temp H1 *right-side-up* along the top edge of Unit H1 and remove the foundation paper.

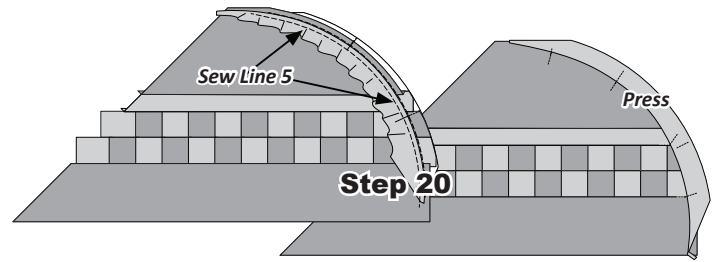
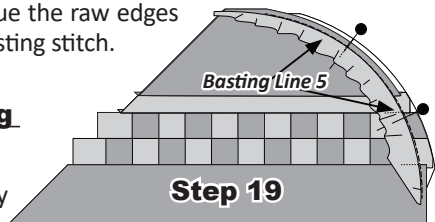
Aligning and Gluing Templates



Step 19: Place *Temp H1* facing *wrong-side-up* on top Unit H1, Match and pin the TRP Lines, then glue the raw edges of *Temp H1* along the basting stitch.

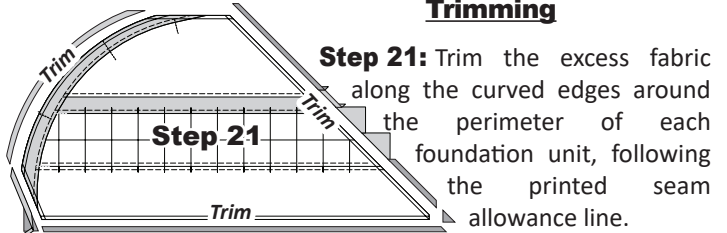
Curved Sewing (Sew Line 5)

Step 20: Sew directly on *Sew Line 5*, with the paper facing up and fabric on the bottom. To prevent puckers, lift the paper about 1/2" above the machine surface as you sew. This allows the fabric to move freely over the feed dogs. After sewing, press the fabric on the back of the paper to cover Section 5. (Graphics shown at the top in next column).

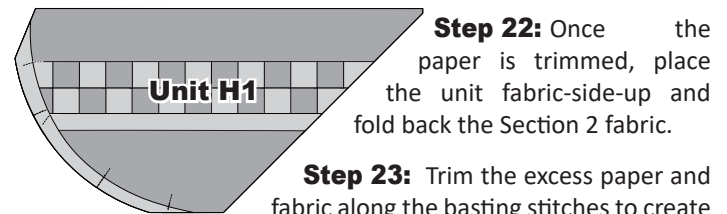


Step 20

Trimming



Step 21: Trim the excess fabric along the curved edges around the perimeter of each foundation unit, following the printed seam allowance line.



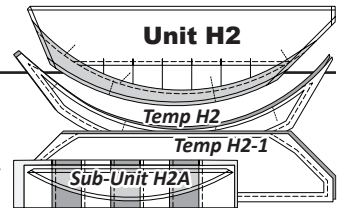
Step 22: Once the paper is trimmed, place the unit fabric-side-up and fold back the Section 2 fabric.

Step 23: Trim the excess paper and fabric along the basting stitches to create a clean scant 1/4" seam allowance on the backside of the unit after the paper is removed. For basic Illustrations and instructions on how to complete the trimming, refer back to the Introduction Booklet under curved paper piecing.

UNITS H2, H3, & H4,

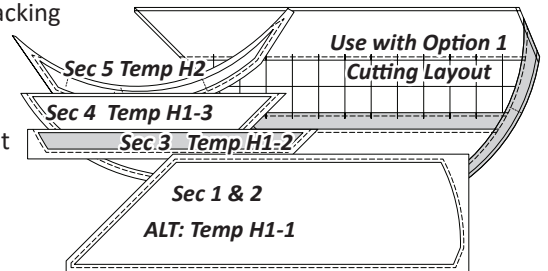
Repeating Process:

Repeat the stacking and paper-piecing process used for Unit H1 to assemble Unit H4. Similarly, Units H2 and H3 follow the same method but involve a single sub-unit and fewer templates. The instructions for adding veins remain consistent across all units and options.



STACKING: OPTION 1

Stacking: Stacking order for Unit H1. These templates are used for Option 1. Since Unit H4 templates are mirrored images of Unit H1, the stacking order remains the same. Therefore, graphics are not provided for Units H4.



Option 1: ALT Templates H1-1 & H1-2 are designed to replace Sec 1, (Checkerboard) and Sec 2 on both Units H1 & H4. The remaining piecing instructions begin with Step 11, under the Foundation Paper piecing Instructions on the previous page.

