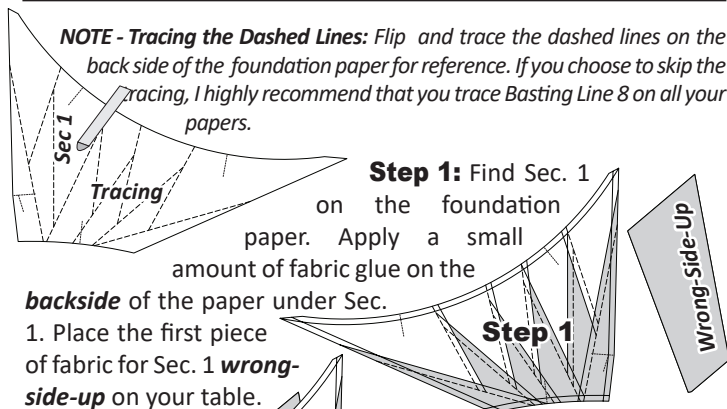


FOUNDATION PAPER PIECING: UNIT G1

NOTE - Tracing the Dashed Lines: Flip and trace the dashed lines on the back side of the foundation paper for reference. If you choose to skip the tracing, I highly recommend that you trace Basting Line 8 on all your papers.



Step 1: Find Sec. 1

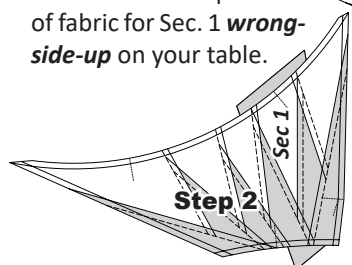
on the foundation paper. Apply a small amount of fabric glue on the

backside of the paper under Sec.

1. Place the first piece of fabric for Sec. 1 **wrong-side-up** on your table.

Step 1

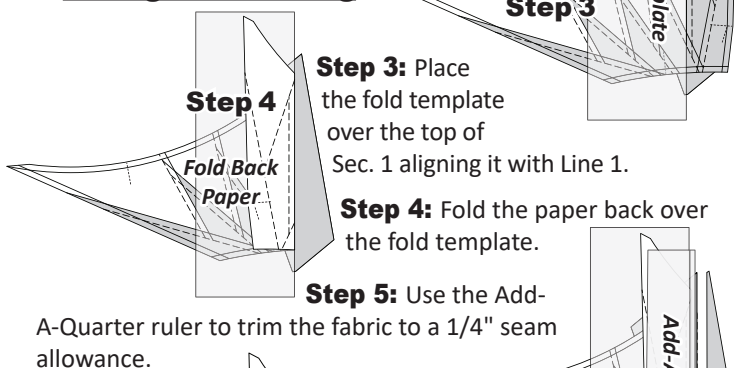
Step 2: Lift the foundation paper, and slide the fabric under Sec. 1. Press the paper onto the fabric to adhere. Repeat Steps 1 and 2 for each foundation unit.



Step 2

NOTE - If you are working with multiple colors make sure to pair fabric :a with Paper #1, Fabric :b with Paper #2, and etc.

Folding and Trimming



Step 4

Fold Back Paper

Step 3: Place the fold template over the top of Sec. 1 aligning it with Line 1.

Step 4: Fold the paper back over the fold template.

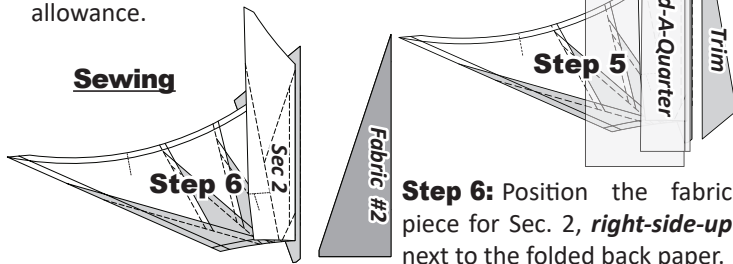
Step 5: Use the Add-A-Quarter ruler to trim the fabric to a 1/4" seam allowance.

Step 3

Step 5

Trim

Sewing



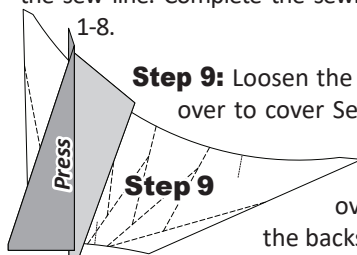
Step 6

Step 6: Position the fabric piece for Sec. 2, **right-side-up** next to the folded back paper.

Step 7

Step 7: Lift the foundation paper and slide the fabric under Sec. 2. Make sure it aligns with the trimmed seam allowance and extends beyond the dashed boundary lines for Section 2.

Step 8: Open the paper and sew on Line 1, starting and stopping 1/8" beyond the sew line. Complete the sewing on each unit 1-8.



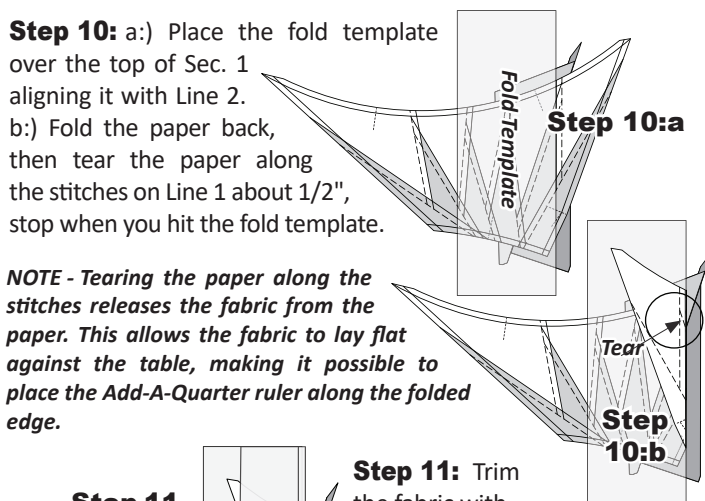
Step 9

Step 9: Loosen the glue under Sec. 1. Fold the fabric over to cover Section 2, on the foundation paper and press. Before moving onto the next step verify the fabric overlaps the Section 2 boundary on the backside of the paper.

Repeating Graphics and Instructions

Step 10: a:) Place the fold template over the top of Sec. 1 aligning it with Line 2. b:) Fold the paper back, then tear the paper along the stitches on Line 1 about 1/2", stop when you hit the fold template.

NOTE - Tearing the paper along the stitches releases the fabric from the paper. This allows the fabric to lay flat against the table, making it possible to place the Add-A-Quarter ruler along the folded edge.



Step 10:a

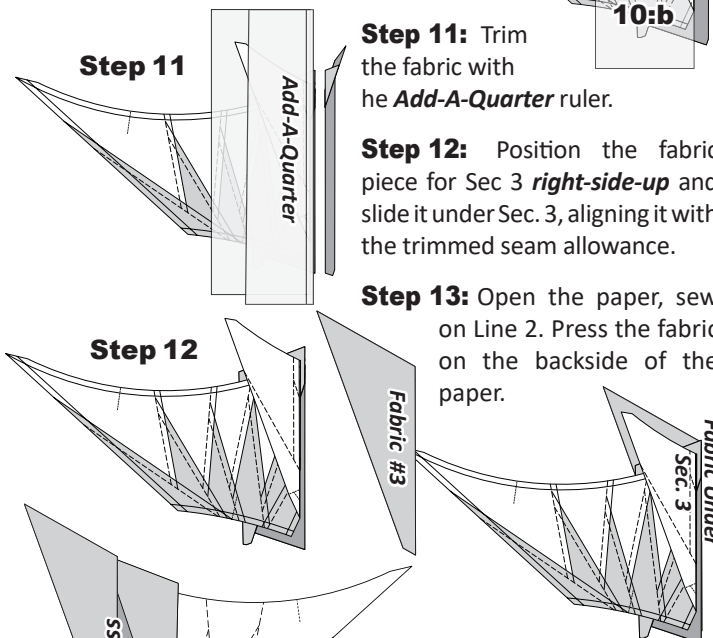
Step 10:b

Step 11

Step 11: Trim the fabric with the Add-A-Quarter ruler.

Step 12: Position the fabric piece for Sec 3 **right-side-up** and slide it under Sec. 3, aligning it with the trimmed seam allowance.

Step 13: Open the paper, sew on Line 2. Press the fabric on the backside of the paper.

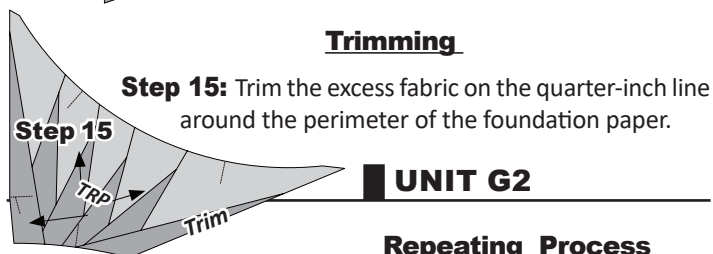


Step 12

Step 13

Step 14: Continue adding the fabric pieces to each section on your foundation papers.

Trimming



Step 15: Trim the excess fabric on the quarter-inch line around the perimeter of the foundation paper.

Step 15

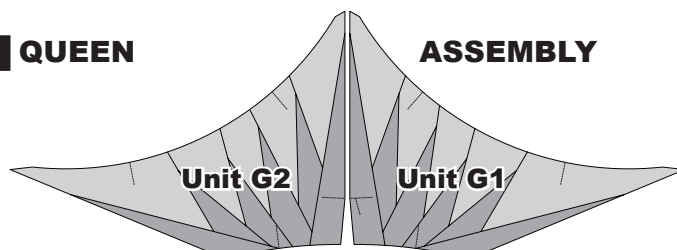
UNIT G2

Repeating Process for Unit G2:

The paper piecing you completed for Units G1-(including stacking and paper piecing)- will be repeated for Unit G2. Follow the same process and techniques as outlined earlier to prepare and assemble the Unit 'G2 foundation pieces.

QUEEN

ASSEMBLY



Unit G2

Unit G1