

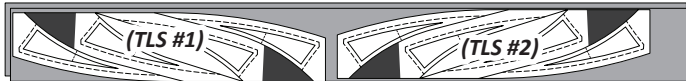
GROUP B: STANDARD CUTTING INSTRUCTIONS

Fabric Chart: The yardage listed for Fabrics B1–B11 in the fabric chart on the previous page is calculated for creating eight (8) blocks using the One Color Group Option. If you plan to use multicolor groups, refer to the Color Groups specified under each Fabric # in the cutting instructions. These references will help you calculate the required yardage for each color accordingly.

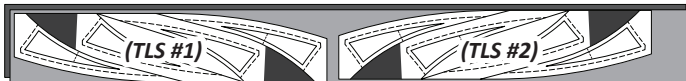
► Fabric B1: (Unit B6, TLS #1) (Unit B5, TLS #2)

Prepare Fabric Strips: Two (2) strips measuring 4-1/2" by 42" are needed to cut (8) pieces for Unit B6 (TLS #1) and Unit B5 (TLS #2). Follow the instructions based on your Color Group.

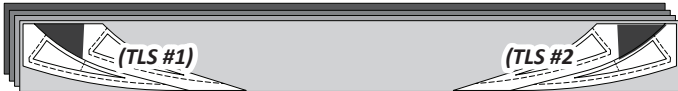
- **One Color Group:** Cut (2) strips measuring 4-1/2" by 42" from Fabric B1.



- **Two Color Group:** Cut (1) strip measuring 4-1/2" by 42" from each Fabric B1:a and B1:b.

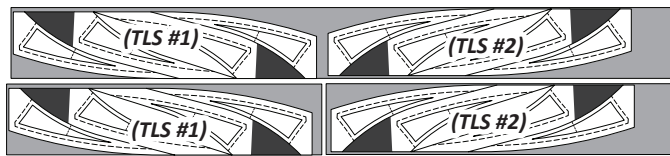


- **Four Color Group:** Cut (1) strip measuring 4-1/2" by 42" from each Fabric B1:a to B1:d.



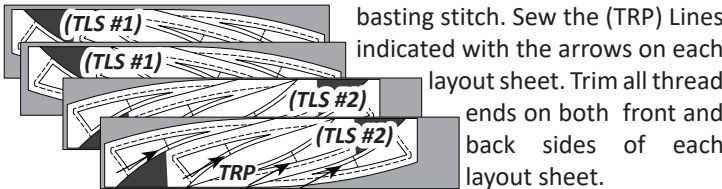
- **Eight Color Groups:** Refer to the rainbow instructions in the Introduction Booklet to optimize fabric use and minimize waste.

Cutting the Strips: Place the fabric strip(s) *right-side-up* on your cutting surface. Position (1) TLS #1 (Unit B6) and (1) TLS #2 (Unit B5) on each strip. The backside of each layout sheet should face the *right-side* of the fabric. Secure the layout sheets with repositionable glue, then, cut the strips between each layout sheet.

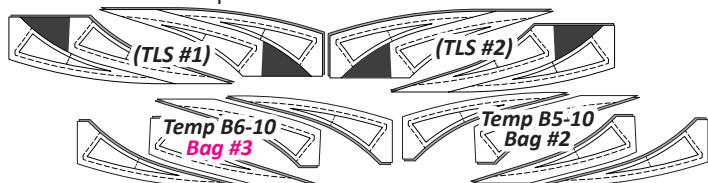


Sewing TRP (Transition and Registration Point) Lines:

Set your stitch length at your desired length for an easily removed basting stitch. Sew the (TRP) Lines indicated with the arrows on each layout sheet. Trim all thread ends on both front and back sides of each layout sheet.



Trimming & Cutting: Trim the excess fabric on the solid line printed around the perimeter of each layout sheet. Cut the individual sections apart on Cut Lines 1 & 2.



Do not remove the paper until your ready to complete the curved piecing.

Organizing Pieces: With multiple use of colors, stack fabrics in reverse alphabetical order, ending with Fabric B1:a on top. Clip the template to the fabric beneath and place **Templates B5-10** into **Bag #B2**, and Templates **B6-10** in **Bag #B3**, for easy access during assembly.

► Fabric B2: (Unit B5 and B7, TLS #3), (Unit B6, TLS #4)

Prepare Fabric Strips: Eight (8) 4" by 42" strips are needed to cut (8) pieces for each Unit B6 (TLS #4) and Units B5 & B7 (TLS #3). Follow the instructions based on your Color Group.

- **One Color Group:** Cut (8) strips measuring 4" by 42" from Fabric B2.



- **Two Color Group:** Cut (4) strips measuring 4" by 42" from each Fabric B2:a and B2:b.



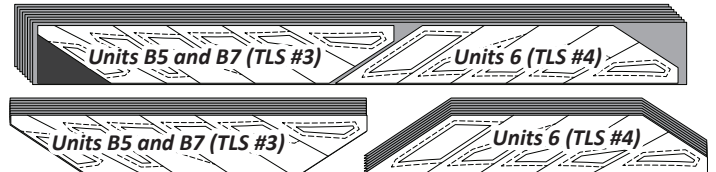
- **Four Color Group:** Cut (2) strips measuring 4" by 42" from each Fabric B2:a to B2:d.



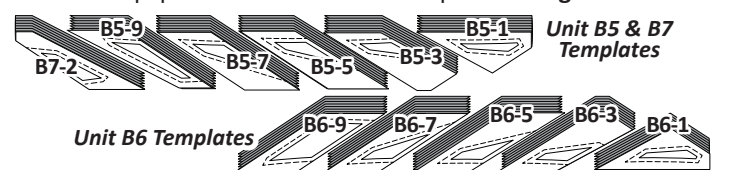
- **Eight Color Groups:** Refer to the rainbow instructions in the Introduction Booklet to optimize fabric use and minimize waste.

Stacking and Cutting: Stack the strips *right-side-up* on your cutting surface. If using multiple colors, stack strips in reverse alphabetical order ending with Fabric B2:a on top.

Step 1: Position **Units B5 & B7 (TLS #3)** along the left edge of the stacked strips, cut (8) pieces. Place **Unit B6 (TLS #4)** along the right edge, cut (8) pieces.



Step 2: Slice through the paper and fabric on each Cut Line in numerical order. Clip the templates to the fabric beneath, the Unit B5 & B7 templates are placed in **Bag #B2** with their corresponding foundation papers. Place the Unit B6 templates in **Bag #B3**.



► Fabric B3: Unit B5 (TLS #5), Unit B6 (TLS #6)

Prepare Fabric Strips: Two (2) 2-1/4" by 42" strips are needed to cut (4) pieces matching the size of each Layout Sheet for **Units B5 (TLS #5)** and **Units B6 (TLS #6)**. Follow the instructions based on your Color Group.