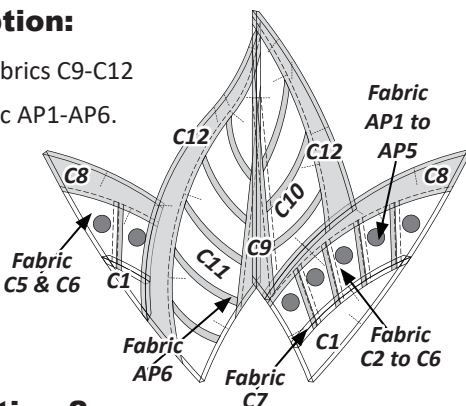


► Standard Option:

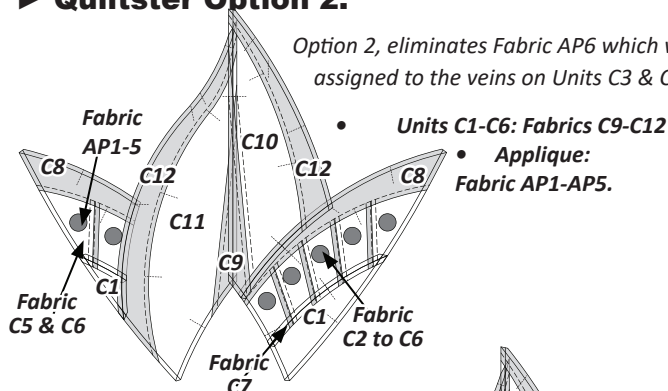
- Units C1-C4: Fabrics C9-C12
- Applique: Fabric AP1-AP6.

NOTE - All of these images show the Fabric References from the Front side of the quilt.



► Quiltster Option 2:

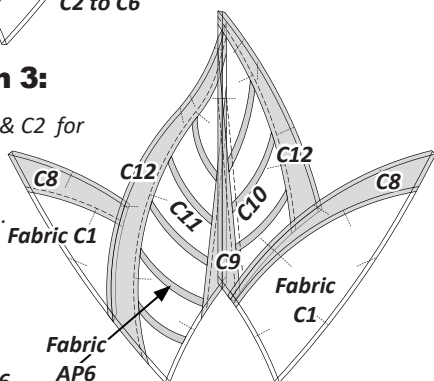
Option 2, eliminates Fabric AP6 which was assigned to the veins on Units C3 & C4.



► Quiltster Option 3:

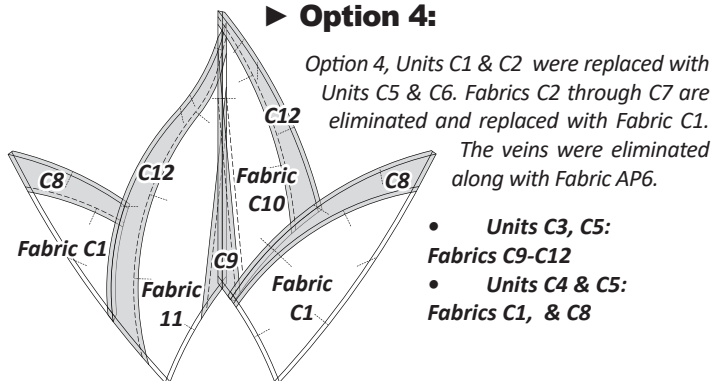
Option 3, replaces Units C1 & C2 for Units C5 & C6. Fabrics C2 through C7 are eliminated and replaced with Fabric C1.

- **Units C3, C4:**
Fabrics C9-C12
- **Units C6 & C5:**
Fabrics C1, & C8
- **Applique:** Fabric AP6



► Option 4:

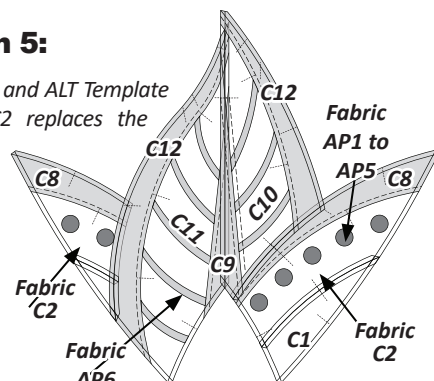
Option 4, Units C1 & C2 were replaced with Units C5 & C6. Fabrics C2 through C7 are eliminated and replaced with Fabric C1. The veins were eliminated along with Fabric AP6.



► Quiltster Option 5:

Option 5, ALT Template C1-1 and ALT Template C2-1 assigned to Fabric C2 replaces the pieced sections on Units C1 and C2, Section 1-9.

- **Units C3, C5:**
Fabrics C9-C12
- **Units C1 & C2:**
Fabrics C1, C2 & C8



Labeling Fabrics: For multiple color groups, label each fabric with a small letter after its reference (e.g., C1:a, C1:b, C1:c).

Stacking Fabrics for Cutting: Stack fabrics in reverse alphabetical order (e.g., C1:c (bottom), C1:b, C1:a (top)). Be sure to stack all other pieces in the same order to maintain consistency.

Labeling Papers: To reduce errors, label your papers with fabric swatches and corresponding paper #s. Proper labeling and stacking helps reduce errors, minimize fabric waste, and maintain an organized workflow when working with multiple color options. For rainbow quilts, always consult the Rainbow cutting options in the Introduction Booklet to optimize fabric usage.

■ GROUP C: CUTTING INSTRUCTIONS STANDARD & OPTION 2

Fabric Chart: The fabric chart applies to both the Standard Option and Option 2. Yardage for Fabrics C1–C12 is calculated for (8) blocks using the One Color Group Option. If you plan to use multicolor groups, refer to the Color Groups listed under each Fabric # in the cutting instructions to determine the required yardage for each color. Applique fabrics have been assigned to their own yardage chart, beginning on Page 12.

► Cutting Instructions:

Units C1-C4, Standard and Option 2 Yardage, Make (8) Each

GROUP-C FABRIC #	YARDAGE INCH	ASSIGNED COLOR
Fabric C1 (T-TLS #1)	$\frac{1}{4}$ yd or (6")	FABRIC SWATCH
Fabric C2 Unit C1 (TLS #2)	$\frac{1}{8}$ yd or (4-1/2")	FABRIC SWATCH
Fabric C3 Unit C1 (TLS #3)	$\frac{1}{8}$ yd or (4-1/2")	FABRIC SWATCH
Fabric C4 Unit C1 (TLS #4)	$\frac{1}{8}$ yd or (4-1/2")	FABRIC SWATCH
Fabric C5 Unit C1 & C2 (TLS #5 & #6)	$\frac{1}{4}$ yd or (9")	FABRIC SWATCH
Fabric C6 Unit C1 & C2 (TLS #7 & #8)	$\frac{1}{4}$ yd or (9")	FABRIC SWATCH
Fabric C7 Unit C1 & C2 (TLS #9 & #10)	$\frac{1}{4}$ yd or (6-1/4")	FABRIC SWATCH
Fabric C8 Unit C1 & C2 (TLS #11)	$\frac{1}{2}$ yd or (18")	FABRIC SWATCH
Fabric C9 Unit C3 & C4 (TLS #12 & #13)	$\frac{3}{8}$ yd or (10")	FABRIC SWATCH
Fabric C10 Unit C3 (Template C3-1)	$\frac{1}{2}$ yd or (15")	FABRIC SWATCH
Fabric C11 Unit C4 (Template C4-1)	$\frac{5}{8}$ yd or (22")	FABRIC SWATCH
Fabric C12 Unit C3 & C4 (TLS #14)	$\frac{3}{4}$ yd or (27")	FABRIC SWATCH

Cutting Instructions are organized as follows. **Standard Option** and **Option 2** are listed first. **Option 3 & 4**, second. **Option 5** third.

DIGITIZED EMBROIDERY, FABRIC CONFETTI, VANESSA FROMM

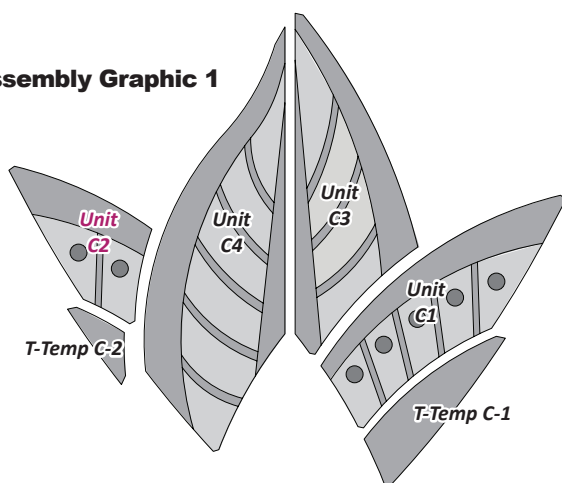
Vanessa Fromm, from Fabric Confetti has designed a digitized embroidery Add-on product to the Jungle Magnolia. Before completing your applique, please review her file thoroughly so you know when to follow her instructions and when to follow ours. If you have a cutting machine, she may provide you cut files. You may want to review her cutting instructions before following ours. If you don't have a cutting machine, you can still use her product. However, instead of cutting an 1/8" edge so you turn over, add the iron-on product she suggests to your entire yardage strip, then use the Stitch-n-peel applique templates to cut out your pieces. Cut right on the edge of the template, instead of an 1/8th inch from the edge. Then, remove the stitch-n-peel from the back of your fabric, and follow her instructions in her pattern for securing the applique to the fabric. For the Unit C1 and C2, we suggest the digitized embroidery after you have paper pieced the units, but before the assembly steps shown below. For Units C3 and C4, complete the digitized embroidery before adding Sections 2 and 3 to your leaf units. This way, the digitized embroidery sews just into the seam allowance for a nice, clean finish.

ASSEMBLY INSTRUCTIONS

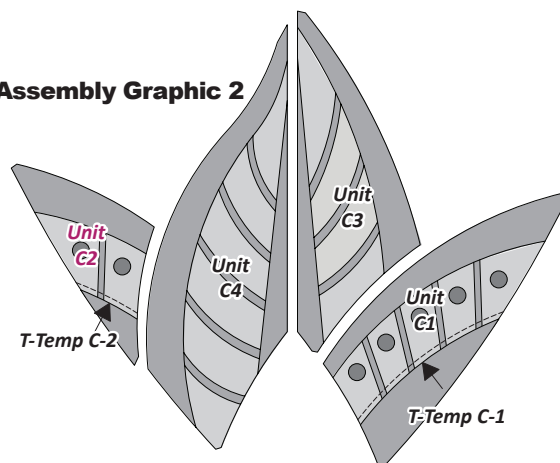
Larger Illustrations for the assembly instructions were provide on TP 860. Their are only two Units to assemble for the C Group. All other Units are sewn directly onto the main quilt.

- Assembly Graphic 1: Exploded View (Units C1 - C4 Standard Option).
- Assembly Graphic 2: Join Unit C1 to **T-Template C-1**, Join Unit C2 to **T-Template C-2**. Follow the Pressing Arrows.

► Assembly Graphic 1



► Assembly Graphic 2



FINAL ASSEMBLY (WALL) GROUP C TO GROUPS D/E/F: (QUEEN) GROUP D TO GROUPS E/G/H:

This concludes steps for Booklet 4. Refer to your Introduction Booklet for the final assembly instructions. If you are assembling the quilt from the outside in, you can complete the assembly steps as you progress. Otherwise, wait until all booklets are completed before sewing the quilt together.