

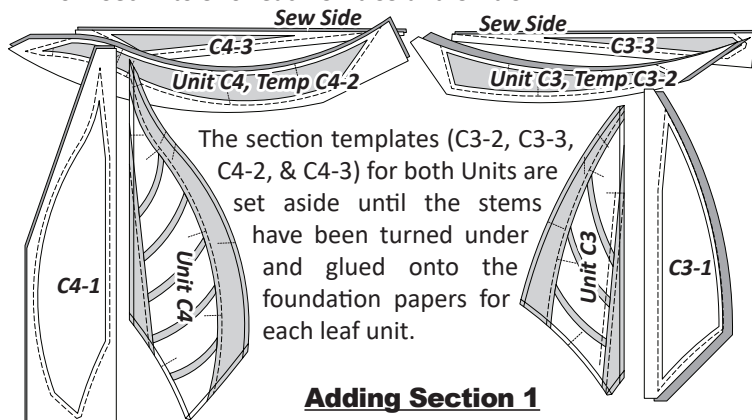
The next step is to paper piece the edges of the leaf and the center spike. Adding the leaf edge using the same curved paper piecing techniques used previously. Finish by attaching the Section 3 spike fabric. To prevent shifting during sewing, pins and repositionable glue are helpful. Once the points are completed, trim the foundation units to remove all the excess fabric and paper from around the edges.

Next, remove the foundation paper and complete the turn-under applique using a small zigzag stitch along the edges of your stems. Detailed instructions, including thread selections, stitch length and needle sizes are provided in the following pages. The last step is to repress the last seam on the backside of Unit C3 to ensure opposing seams during the final assembly.

The following instructions are for machine invisible applique, however, there are many other applique techniques available. Information on where to find details on a digitized embroidery approach using an add-on product by Vanessa Fromm, from Fabric Confetti is also discussed. Feel free to choose the method that best suits your style and comfort level. Whether you follow our approach or adapt it to your preferences, the end results will be beautiful.

STACKING AND PIECING (UNITS C3 & C4)

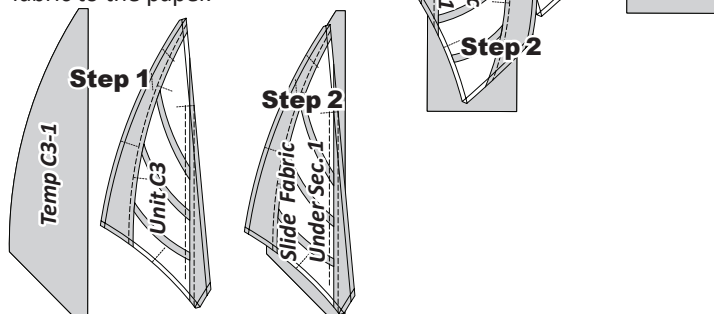
The templates and fabrics pieces for Units C3 & C4, are sorted from Sec. 1 to 3 for each Unit C3 and Unit C4.



Adding Section 1

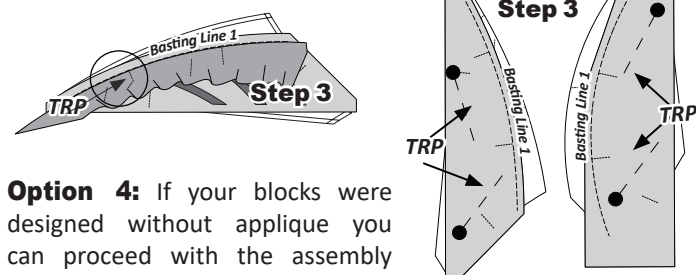
Step 1: To begin, apply a small amount of fabric glue to the backside of the foundation paper beneath Section 1 on each Unit C3 & C4. Place the fabric pieces **wrong-side-up** on your table next to the corresponding foundation unit.

Step 2: Lift the foundation paper, and slide the fabric under Sec 1, on each unit. Press gently to adhere the fabric to the paper.



Step 3: Secure with a few flower pins to hold it in place.

Step 4: Place the foundation papers printed side up at your machine and sew the Basting and TRP Lines on each foundation Unit.



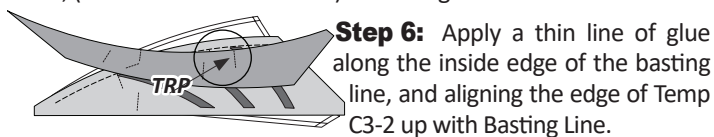
Option 4: If your blocks were designed without applique you can proceed with the assembly instructions in the next column for curved piecing and paper piecing instructions.

NOTE - The assembly instructions in the next column were prepared using graphics for the standard option which show the applique.

Applique Options: If your blocks were designed with applique, before you continue, it is time to add the applique stems. This includes turning under the edges of all the stems and attaching them to the fabric on the backside of the foundation papers. Set aside the units for now and proceed with the applique instructions on Pages 12 and 13 before returning to complete the assembly on your leaf units.

UNIT C3, Curved Paper Piecing

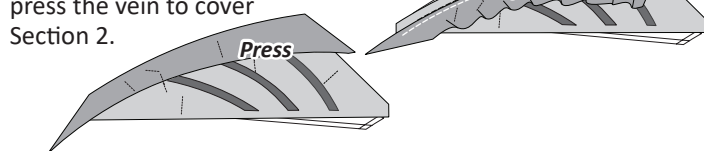
Step 5: Remove the foundation paper from the Sec 2, template for Unit C3. (Temp C3-2). Position Temp C3-2, **wrong-side-up** over Unit C3 and match the first set of TRP Lines, (indicated with the arrow) to Basting Line 2.



Step 6: Apply a thin line of glue along the inside edge of the basting line, and aligning the edge of Temp C3-2 up with Basting Line.

Sewing the Curve

Step 7: At the machine, position the pieces with the paper facing up, fabric next to the feed dogs. Lift the paper and sew carefully along Sew Line 2. Then press the vein to cover Section 2.



Paper Piecing Sec. 3

Template C3-3 for Sections 3 is the last pieces sewn on to Unit C3.

Step 8: a:) Place the fold template over the top of Sec. 1 aligning it with **Line 3**. b:) Fold the paper back, and trim the fabric with the **Add-A-Quarter** ruler. c:) Position the fabric piece for Sec 3 **right-side-up** and slide it under Sec. 3, aligning it with the trimmed seam allowance. (Graphics top of next page)

Step 9: Open the paper, sew on Line 3 and press. (Graphic next page).