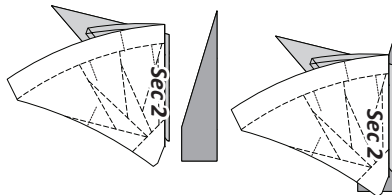
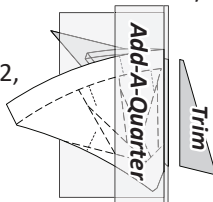


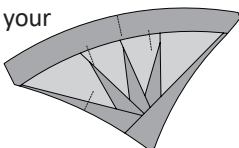
Step 4: Use the Add-A-Quarter ruler to trim the fabric to a 1/4" seam allowance.

Step 5: Position the fabric piece for Sec. 2, *right-side up* next to the folded back paper. Lift the foundation paper and slide the fabric under Sec. 2.



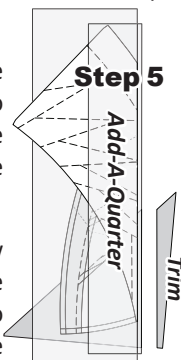
Step 6: Open the paper, sew on Line 1 and press. Continue adding the fabric pieces to each section, stopping once you complete Sec. 9.

Step 7: After completing Section 9, adjust your stitch length to 2.2 and sew Basting Line 9. Trim the thread ends on both sides of each unit. Then repeat curved paper piecing steps, Page 13, to complete the vein.



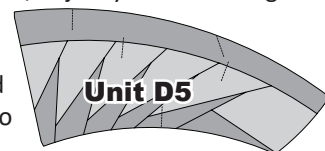
Step 5: Use the Add-A-Quarter ruler to trim the fabric to a 1/4" seam allowance.

Step 6: Position the fabric piece for Sec. 2, *right-side up* next to the folded back paper. Lift the foundation paper and slide the fabric under Sec. 2.



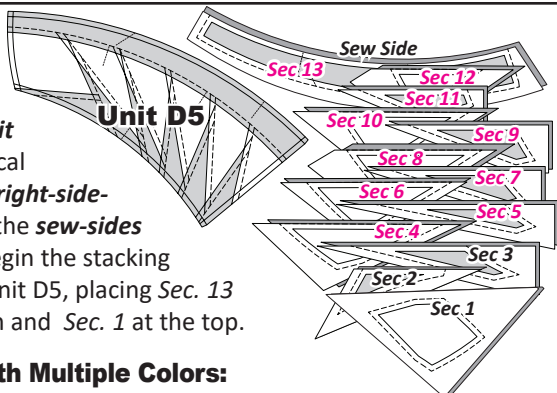
Step 7: Open the paper, sew on Line 1 and press. Continue adding the fabric pieces to each section, stopping once you complete Sec 12.

Step 8: After completing Section 12, adjust your stitch length to 2.2 and sew Basting Line 12. Trim the thread ends on both sides of each unit. Then repeat curved paper piecing steps, Page 13, to complete the vein.



STACKING: UNIT D5

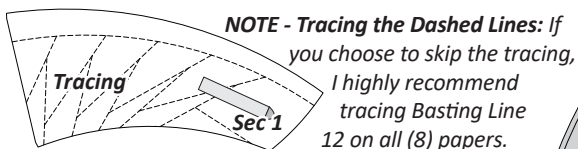
Arrange the templates and fabric pieces for *Unit D5* in numerical order, facing *right-side-up* and align the *sew-sides* at the top. Begin the stacking process for Unit D5, placing *Sec. 13* at the bottom and *Sec. 1* at the top.



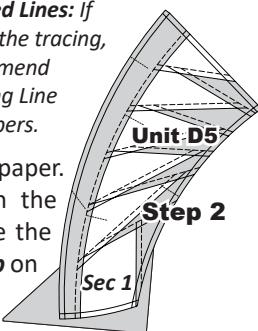
Working with Multiple Colors:

If using multiple colors, number your papers 1 to 8 and assign Fabric #s to correspond with the paper numbers.

FOUNDATION PAPER PIECING: UNIT D5



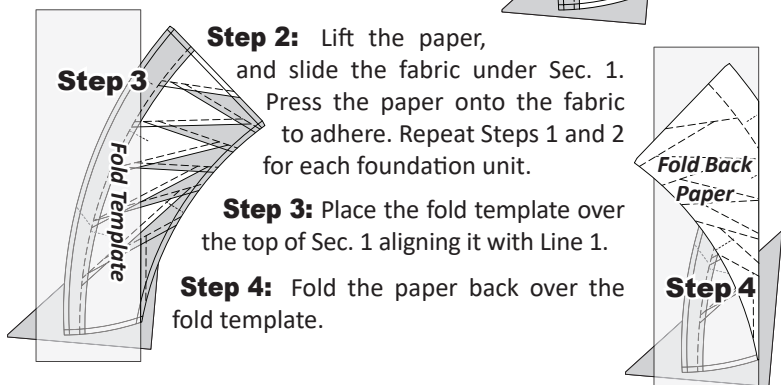
Step 1: Find Sec. 1 on the foundation paper. Apply a small amount of fabric glue on the *backside* of the paper under Sec. 1. Place the first piece of fabric for Sec. 1 *wrong-side-up* on your table.



Step 2: Lift the paper, and slide the fabric under Sec. 1. Press the paper onto the fabric to adhere. Repeat Steps 1 and 2 for each foundation unit.

Step 3: Place the fold template over the top of Sec. 1 aligning it with Line 1.

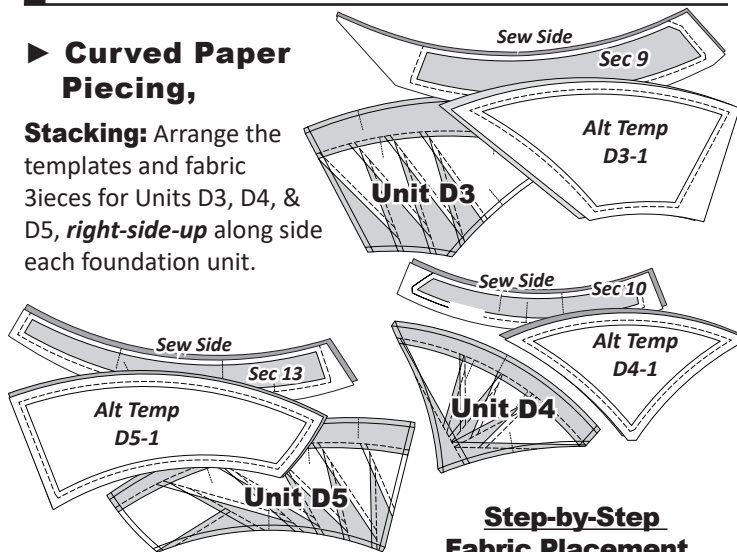
Step 4: Fold the paper back over the fold template.



ALTERNATIVE OPTIONS

► Curved Paper Piecing,

Stacking: Arrange the templates and fabric pieces for Units D3, D4, & D5, *right-side-up* along side each foundation unit.



Step-by-Step Fabric Placement

Step 1: Apply a small amount of fabric glue to the backside of the foundation paper under all the spike sections. Place the fabric pieces cut with the alternative templates *wrong-side-up* on your table.

Step 2: Lift the foundation paper, and slide the fabric beneath the spike sections on each unit. Press to adhere the fabric to the paper then secure with flower pins.

