

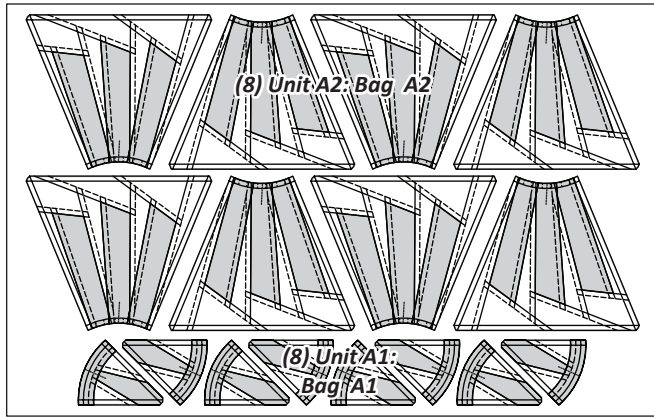
# MERRY GO ROUND INSTRUCTIONS

**Ziploc Storage Bags:** You will need (3) bags to complete the organization for these instructions. Label the bags (#A1 to #A3) to stay organized while cutting the Foundation Units and Templates.

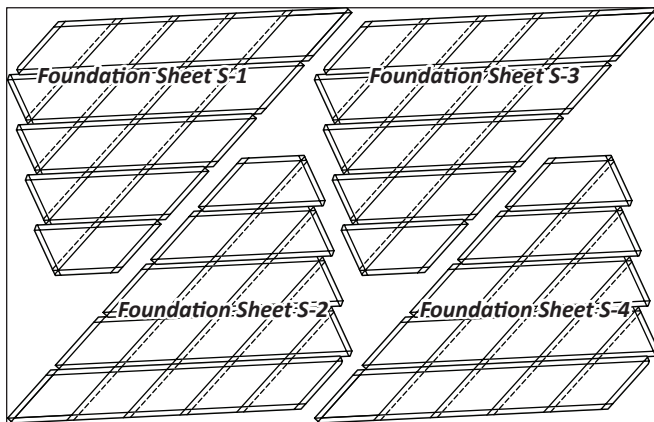
- Bag #A1: (8) Unit A1 Papers and Cutting Templates
- Bag #A2: (8) Unit A2 Papers and Cutting Templates
- Bag #A3: (1) of each Foundation Sheet S-1 to S-8, TLS #3, and SP Templates

## ► Preparing the Foundation Papers:

**Step 1:** Cut out (8) each of the Foundation Papers for Unit A1 & A2 [NP 1060], along with (1) each of the **Templates and Template Layout Sheets** on [TP 900]. Cut (2) of each Foundation Sheet on [NP 1061 and NP 1062]. See the following newspaper graphics for the corresponding bag information for each of your units and templates. Make sure you are working with the Group A Bags that you pre-labeled for this pattern. \*Refer back to *General Information for Foundation papers and templates* for additional instructions on how to prepare your foundation papers and templates.

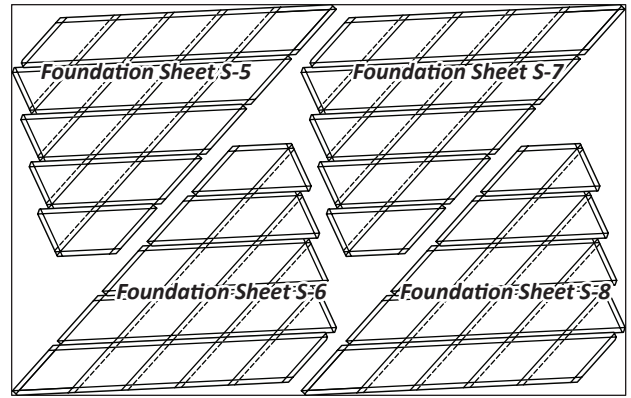
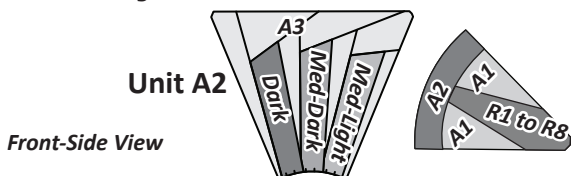


▼ (1) NP 1060

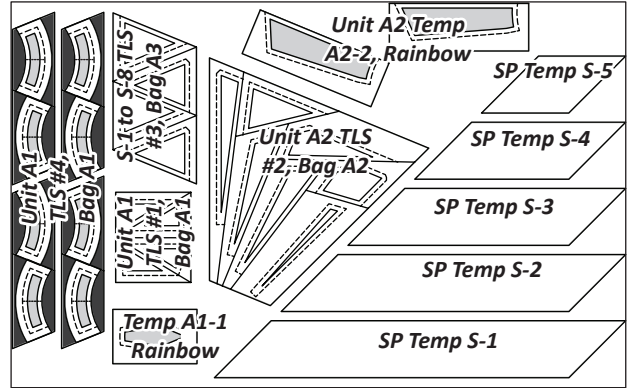


▼ (1) NP 1061

## ► Color Layout Units A1 & A2



▼ (1) NP 1062



▼ (1) TP 900

## ► Merry Go Round Fabric Information:

The table below includes yardage, Fabric Numbers, and a reference to which fabrics go with the Templates and TLS for Units A1 & A2. This table is your guide for not only selecting your own colors, but keeping you organized. The Color Layout in the previous column will also help to know where each fabric goes. Don't forget to cut a swatch of your chosen fabric to paste in the box in the Assigned Colors column! This will help you stay organized!

Units A1 & A2: Make (8) of Each		
GROUP-A FABRIC #	YARDAGE INCH	ASSIGNED COLOR
Fabric A1 Unit A1 (Background TLS)	1/8 yd or (4-1/2")	FABRIC SWATCH
Fabric A2 Unit A1 (TLS #4)	1/8 yd or (2-1/2")	FABRIC SWATCH
Fabric A3 Unit A2 (TLS #2)	3/4 yd or (23")	FABRIC SWATCH
Fabric A4 S-1 to S-8 TLS #3	1/4 yd or (9")	FABRIC SWATCH
Windmill Spokes (Fabrics S1-S3, S5-S7, S9-S11, S13-S15, S17-S19, S21-S23, S25-S27, S29-S31 Cut as part of the Rainbow Cutting, Page 2		
Fabrics R1-R8 Unit A1 Center Star & Foundation Sheets S-1 to S-8	(2) 3" strips of Fabrics R1 to R8 cut during Rainbow Cutting	