

Honeydew Melon

Fireworks Mixers JNQ00275-B-003

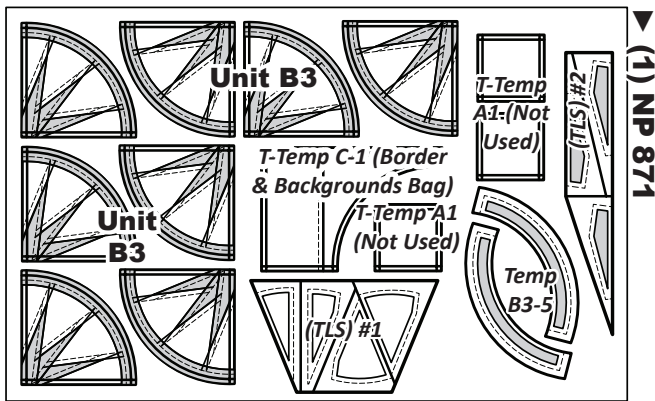
GROUP B3: HONEYDEW MELON INSTRUCTIONS

Ziploc Storage Bags: You will need (2) bags to complete the organization for these blocks. Label the bag as follows to stay organized while cutting the Foundation Units and Templates. This package includes (8) Foundation Units.

- **Block Group Bag B3:** (8) Unit B3 Foundation Papers and associated Templates and TLS.
- **Border and Backgrounds Bag:** T-Temp C-1.

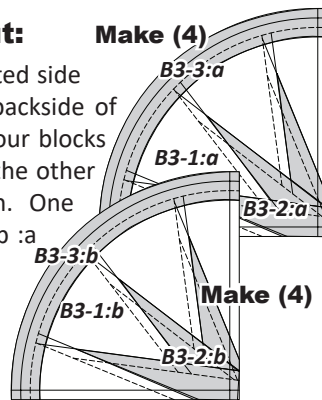
► Preparing Foundation Papers & Templates:

Cut out (8) Unit B3, foundation papers [NP 871] and place in Group Bag B3. The Templates and Template Layout Sheets (TLS) are placed in Bag B3 as well. Cut out T-Temp C-1 and placed into the Border and Backgrounds Bag to be cut later. See the newsprint below for assigned Unit and Template names. *Refer back to General Information under Foundation Papers and Templates for instructions on how to prepare your foundation papers and templates.



► Standard Color Layout:

The color layout matches the printed side of the paper, which reflects the backside of the quilt. You will make half of your blocks using one color combination and the other half using a 2nd color combination. One group is referred to as Color Group :a and the other is Color Group :b.



► Fabric Information:

The Unit Chart includes yardage, fabric numbers, and a reference to the Fabrics #s assigned to the (TLS's) for Unit B3. Fabric B3-1 is assigned to the (BKG), B3-2 to the spikes, and B3-3 to the accent vein.

In addition to the fabrics needed to make Unit B3, you will also cut, at this time, the background fabrics, BT1 and BT2. For now, place these strips into the Border and Backgrounds Bag. They will be cut as part of Chapter 3.

Unit B3: (8) Blocks

GROUP-B3 FABRIC #	YARDAGE INCH	FABRIC SWATCH
Fabric B3-1:a: Bkg Unit B3 (TLS) #1	1/4 yd or (6-1/4")	Fabric Swatch
	(1) 6-1/4" Strip	
Fabric B3-1:b: Bkg Unit B3 (TLS) #1	1/4 yd or (6-1/4")	Fabric Swatch
	(1) 6-1/4" Strip	
Fabric B3-2:a Spikes Unit B3 (TLS) #2	1/4 yd or (5")	Fabric Swatch
	(2) 2-1/2" Strips	
Fabric B3-2:b Spikes Unit B3 (TLS) #2	1/4 yd or (5")	Fabric Swatch
	(2) 2-1/2" Strips	
Fabric B3-3:a: Vein Unit B3 Temp B3-5	1/4 yd or (9")	Fabric Swatch
	(1) 9" Strip	
Fabric B3-3:b: Vein Unit B3 Temp B3-5	1/4 yd or (9")	Fabric Swatch
	(1) 9" Strip	
Fabric BT1:a* T-Temp C-1	1/4 yd or (9")	Fabric Swatch
	(1) 6-1/2" Strip	
Fabric BT1:b* T-Temp C-1	1/4 yd or (9")	Fabric Swatch
	(1) 6-1/2" Strip	
Fabric BT2:a* T-Temp C-1 (alt)	1/4 yd or (9")	Fabric Swatch
	(1) 6-1/2" Strip	
Fabric BT2:b* T-Temp C-1 (alt)	1/4 yd or (9")	Fabric Swatch
	(1) 6-1/2" Strip	

NOTE - *: Place Fabrics BT1:a and BT1:b, BT2:a and BT2:b into the Border and Backgrounds Bag for later.

GROUP B3: CUTTING INSTRUCTIONS

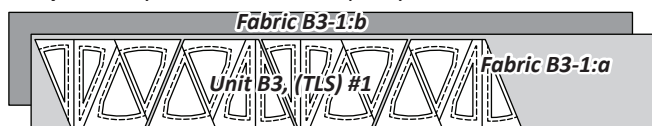
NOTE - Stacking Strips: Stack your strips in alphabetical order when using multiple colors.

NOTE - Reusing your Templates: Templates and (TLS) are repositioned on the cut strips to achieve the number of cuts required in the cutting Instructions. Please read carefully to ensure the correct # of pieces are stacked beneath each Template before cutting.

► Fabric B3-1:a & :b, TLS #1

One 6-1/4" by 42" strip yields enough fabric to cut (5) pieces matching the size and shape of (TLS #1) and you only need (4) from each Fabric B3-1:a and :b.

Step 1: Stack (2) 6-1/4" x 42" strips are stacked facing *right-side-up*. Place your :a fabric on top of your :b fabric.



Step 2: Unit B3, Template Layout Sheet #1 is used to sub-cut (8) pieces matching the size and shape of the (TLS), (4) from each fabric.



Step 3: The fabric pieces are sorted by color, stacked (8) deep, with (4) Fabric B3-1:a on top of (4) B3-1:b, then placed beneath one TLS #1.

Step 4: To complete the cutting, slice through the paper and fabric on each Cut Line. Clip the pieces together and place into the Block Group Bag B3.



CUTTING INFORMATION, SPIKES

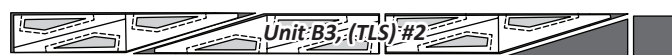
► Fabric B3-2:a & :b, TLS #2

One 2-1/2" by 42" strip yields enough fabric to cut (3) pieces matching the size and shape of (TLS #2). This is enough for (3) units. For this pattern, you need (4) units for each colorway, so you will need (2) 2-1/2" x 42" strips of B3-2:a & :b.

Step 1: (2) 2-1/2" strips are stacked facing *right-side-up*. Stack your fabrics in alphabetical order beginning with *Fabric B3-2:a* on the top.



Step 2: Unit B3, Template Layout Sheet #2 is used to sub-cut (4) pieces matching the size and shape of the (TLS). You can save some yardage by cutting (1) stack, then removing the top and bottom piece of fabric, before cutting the remaining (2) stacks.



Step 3: The fabric pieces stacked eight deep with (4) Fabric B3-2:a pieces on top and (4) Fabric B3-2:b pieces on the bottom. Then, place the TLS #2 on top.

Step 4: To complete the cutting, slice through the paper and fabric on each Cut Line. Clip the pieces together and place into the Block Group Bag B3.



► Fabric B3-3:a & :b: Temp B3-5

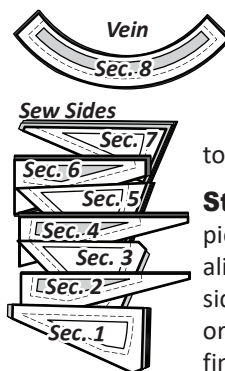
Step 1: Cut and stack (1) 9" by 42" strip from each *Fabric B3-3:a* and *Fabric B3-3:b*. Position the strips facing *right-side-up*. Repositionable fabric glue is placed on the backside of each *Unit B3, Temp B3-5*. The backside of each template is placed against the *right-side* of the fabric.



Step 2: To complete the cutting, trim the excess fabric off around the perimeter of each Sec. Temp. Then, reposition them to cut (4) pieces from each fabric. Clip the pieces together and place into the Block Group Bag B3.



STACKING: UNIT B3



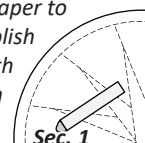
Stacking Order: Remove the Sec. 1 to Sec. 8 stacks from your Bag B3 and place them on your table. At this time, check to see that the (4) :a fabrics are positioned on top of the (4) :b fabrics in each stack.

Stacking: Position the templates and fabric pieces facing right-side up, with the sew-sides aligned at the top. Sec. 1 does not have a sew side. The pieces are then stacked in reverse order starting with the largest # on the bottom finishing with Sec. 1 on top.

Numbering your Papers: Number your papers from #1 to #8. The :a fabrics will be sewn to Papers #1 to #4 and the :b fabrics will be sewn to Paper #5 to #8. You can label them with an :a or a :b to keep yourself organized.

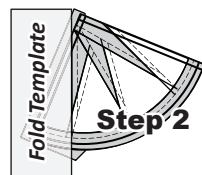
FOUNDATION PAPER PIECING: UNIT B3

NOTE - Tracing the Dashed Lines: It is always a good idea to trace the dashed lines printed on the front side of the foundation paper to the backside of the paper on your first unit. To accomplish this, position the foundation paper onto a light table with the printed side facing down toward the light source, then trace the dashed lines onto the back side of the paper.

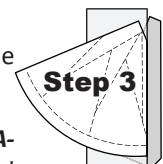


Step 1: The first piece of fabric is placed *wrong-side up* on your table. Lift the foundation paper, and slide the fabric under Sec. 1. Glue is used to adhere the fabric to the backside of the paper. Repeat **Step 1** for each foundation unit.

Step 2: Place the fold template over the top of Sec. 1, lining the edge up with the solid black line marked *Line 1*.



Step 3: Fold the paper back over the top of the fold template.



Step 4: Place the *Add-A-Quarter* ruler next to the folded paper and trim the fabric with your rotary cutter.

