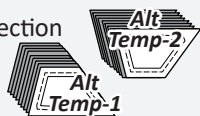


Step 2: Use *Unit C3 & C4 Alt Temp-1 and Alt Temp-2* to cut (8) pieces with each template. Reposition the templates as needed.



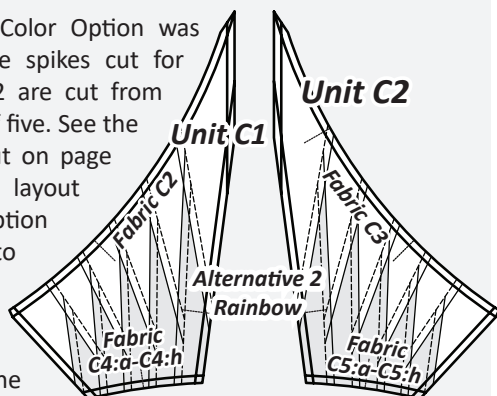
Step 3: Paper clip the fabric to the section templates. Place the pieces for Alt Temp-1 in Bag #C3 and Alt Temp-2 in Bag #C4.



GROUP C ALTERNATIVE 2 CUTTING INSTRUCTIONS (RAINBOW): FABRICS C4:a-C4:h & C5:a-C5:h

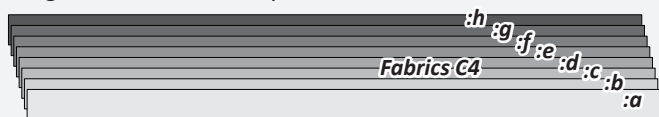
► Alternative 2 Rainbow Layout:

The Alternative 2 Color Option was designed so all the spikes cut for each Unit C1 & C2 are cut from one color instead of five. See the Alternative 2 Layout on page 21 for a complete layout of the Rainbow Option using Fabrics C4:a to C4:h and Fabrics C5:a to C5:h. The Rainbow Fabric Chart is shown at the bottom of this page.

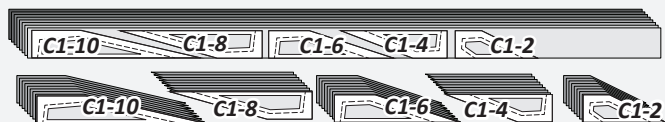


► Fabrics C4:a-h, Templates C1-(2, 4, 6, 8, 10)

Step 1: Cut (1) 2" by 42" strip *each* from *Fabrics C4:a, C4:b, C4:c, C4:d, C4:e, C4:f, C4:g & C4:h*. The strips are stacked facing *right-side-up* in alphabetical order starting with C4:h at the bottom and ending with C4:a on the top.



Step 2: Arrange *Unit C1, Templates C1-2, C1-4, C1-6, C1-8 & C1-10* on the strips. Complete the cutting for each template for *Colors 4:a-4:h*.



► Group C Alternative 2 Fabric Chart:

ALTERNATIVE 2 RAINBOW GROUP-C FABRIC #	YARDAGE INCH	ASSIGNED COLOR							
		Fabric Swatch C4:a	Fabric Swatch C4:b	Fabric Swatch C4:c	Fabric Swatch C4:d	Fabric Swatch C4:e	Fabric Swatch C4:f	Fabric Swatch C4:g	Fabric Swatch C4:h
Rainbow, Fabric C4:a to C4:h Unit C1 (Temps C1-2, C1-4, C1-6, C1-8 & C1-10)	1/8 yd Each :a-:h or (2")	Fabric Swatch C4:a	Fabric Swatch C4:b	Fabric Swatch C4:c	Fabric Swatch C4:d	Fabric Swatch C4:e	Fabric Swatch C4:f	Fabric Swatch C4:g	Fabric Swatch C4:h
Rainbow, Fabric C5:a to C4:h Unit C2 (Temps C2-2, C2-4, C2-6, C2-8 & C2-10)	1/8 yd Each :a-:h or (2")	Fabric Swatch C5:a	Fabric Swatch C5:b	Fabric Swatch C5:c	Fabric Swatch C5:d	Fabric Swatch C5:e	Fabric Swatch C5:f	Fabric Swatch C5:g	Fabric Swatch C5:h

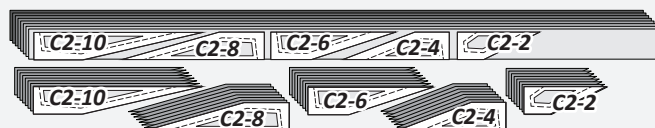
Step 3: Paper clip the section templates to the fabric beneath without changing any of the stacking order. Place the pieces into Bag #C1.

► Fabrics C5:a-h, Templates C2-(2, 4, 6, 8, 10)

Step 1: Cut (1) 2" by 42" strip *each* from *Fabrics C5:a, C5:b, C5:c, C5:d, C5:e, C5:f, C5:g & C5:h*. The strips are stacked facing *right-side-up* in alphabetical order starting with C5:h on the bottom and ending with C5:a on the top.



Step 2: Arrange *Unit C2, Templates C2-2, C2-4, C2-6, C2-8 & C2-10* on the strips. Complete the cutting for each template for *Colors 5:a-5:h*.



Step 3: Paper clip the section templates to the fabric beneath without change any of the stacking order. Place the pieces into Bag #C2.

► Group C Alternative 3 Fabric Chart:

ALTERNATIVE 3 FABRIC OPTION: UNITS C1 & C2		
Fabric C4 Unit C1 (Temps C1-2, C1-4, C1-6, C1-8 & C1-10)	1/2 yd or (16")	Fabric Swatch
Fabric C5 Unit C2 (Temps C2-2, C2-4, C2-6, C2-8 & C2-10)	1/2 yd or (16")	Fabric Swatch

GROUP C ALTERNATIVE 3 CUTTING INSTRUCTIONS: FABRICS C4 & C5

The Alternative 3 Color Option was designed so all the spikes cut for each Unit C1 & C2 are cut from one color instead of five. This version is like the Alternative 2 Rainbow Layout except that there is only one Fabric C4 and one Fabric C5.

► Fabric C4, Templates C1-(2, 4, 6, 8, 10)

Step 1: Cut (8) 2" by 42" strips from *Fabric C4*. Stack the strips facing *right-side-up*.