

## GROUP K: DAGGERED TOP INSTRUCTIONS

**Ziploc Storage Bags:** You will need (2) bags to complete the organization for these instructions. Label the bags as follows to stay organized while cutting the Foundation Units and Templates.

- Bag #K1: (8) Unit KR Papers, and Unit KR Templates
- Bag #K2: (8) Unit KL Papers and Unit KL Templates

### ► Preparing Foundation Papers & Templates:

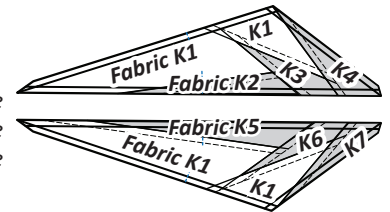
Cut out (8) ea. Unit KR & Unit KL [NP 863 & NP 864] and associated templates and place into the corresponding Unit bag. See the newsprint graphics that follow for information on how to organize your units and templates into bags. \*Refer back to General Information for Foundation papers and templates for additional instructions on how to prepare your foundation papers and templates.

### ► Daggered Top Fabric Information:

The Unit Chart to the right includes yardage, fabric numbers, and a reference to which fabrics go with the Templates and (TLS) to complete **Units KL & KR**. A Color Layout, shown on the next page, gives a visual reference to where the fabrics are located on each unit.

| <i>Units KL &amp; KR Yardage, Make (8) ea.</i> |                       |                   |
|--|-----------------------|-------------------|
| GROUP-K-006<br>FABRIC #                        | YARDAGE<br>INCH       | ASSIGNED<br>COLOR |
| Fabric K1<br>Unit KL & KR (TLS) #1 & #2        | 5/8 yd<br>or (22")    | Fabric Swatch     |
| Fabric K2<br>Unit KL (TLS) #4                  | 1/8 yd<br>or (4")     | Fabric Swatch     |
| Fabric K3<br>Unit KL (TLS) #6                  | 1/8 yd<br>or (2-1/2") | Fabric Swatch     |
| Fabric K4<br>Unit KL (TLS) #8                  | 1/8 yd<br>or (2-1/2") | Fabric Swatch     |
| Fabric K5<br>Unit KR (TLS) #3                  | 1/4 yd<br>or (5")     | Fabric Swatch     |
| Fabric K6<br>Unit KR (TLS) #5                  | 1/8 yd<br>or (2")     | Fabric Swatch     |
| Fabric K7<br>Unit KR (TLS) #7                  | 1/8 yd<br>or (2-1/2") | Fabric Swatch     |

### ► Color Layout



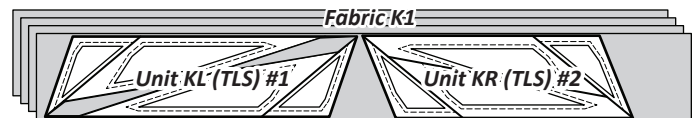
**NOTE - Backside Graphic:** The color layout shown matches the printed side of the paper, and the backside of the quilt.

**NOTE - Stacking Strips:** Templates and (TLS) are repositioned on the cut strips to achieve the number of cuts required in the cutting Instructions. Please read carefully to ensure the correct number of pieces are stacked beneath each Template before cutting.

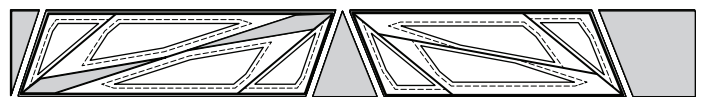
**NOTE - Glue:** Repositionable glue placed on the backside of each template will keep the templates and (TLS) from moving during the cutting process.

### ► Fabric K1: (TLS) #1 & #2

**Step 1:** Cut and stack (4) 5-1/2" by 42" strips from Fabric K1 facing **right-side up** on your cutting table. Place **Unit KL, (TLS) #1** onto the strips aligned with the left edge of the strips. Place **Unit KR, (TLS) #2** onto the right half of the strips.

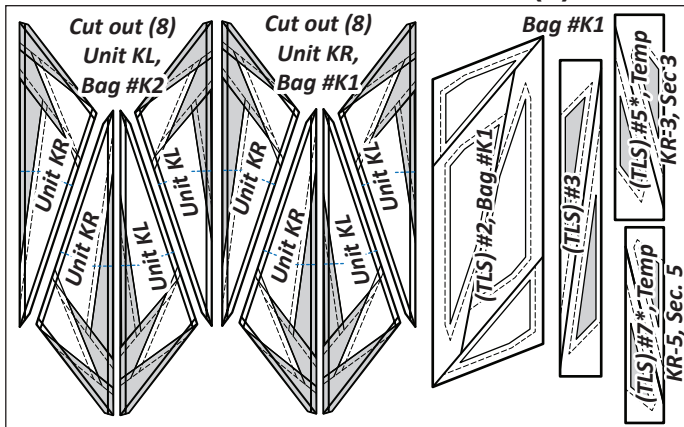


**Step 2:** Cut (4) pieces, matching the size and shape of each TLS.

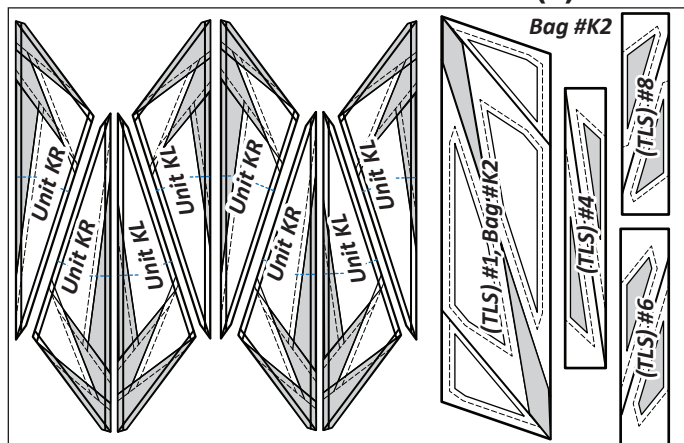


**Step 3:** Four (4) fabric pieces are stacked beneath each (TLS). The cutting is completed by slicing through the paper on each Cut Line in numerical order to separate the individual sections. Clip the template pieces to the fabric beneath. Place the Unit KL pieces in Bag #K2 and Unit KR pieces in Bag #K1.

### ► (1) NP 863



### ► (1) NP 864



**NOTE - \*TLS #5 & #7, NP 863:** Please switch your TLS #5 and TLS #7, and add text as shown below to fix the Sec. and Temp info if it they don't match the order shown. There was a correction needed for the first printing.



► **Fabric K2: (TLS) #4**

**Step 1:** Cut (2) 2" by 42" strips from *Fabric K2*. Stack the pieces facing *right-side up* on your cutting table. Place *Unit KL, (TLS) #4* on the stack and cut (4) pieces, matching the size of the Layout Sheet, repositioning the (TLS) as needed for each cut.



**Step 2:** Stack the four (4) fabric pieces beneath the (TLS), then cut on Line 1 to separate the individual sections. Clip the template pieces to the fabric beneath. Place the pieces in Bag #K2.



► **Fabric K3: (TLS) #6**

**Step 1:** Cut (1) 2-1/2" by 42" strip from *Fabric K3*. Place the strip facing *right-side up* on your cutting table. Place *Unit KL, (TLS) #6* on the stack and cut (4) pieces, matching the size of the Layout Sheet, repositioning the (TLS) as needed for each cut.



**Step 2:** Stack the four (4) fabric pieces beneath the (TLS), then cut on Line 1 to separate the individual sections. Clip the template pieces to the fabric beneath. Place the pieces in Bag #K2.



► **Fabric K4: (TLS) #8**

**Step 1:** Cut (1) 2-1/2" by 42" strip from *Fabric K4*. Place the strip facing *right-side up* on your cutting table. Place *Unit KL, (TLS) #8* on the stack and cut (4) pieces, matching the size of the Layout Sheet, repositioning the (TLS) as needed for each cut.

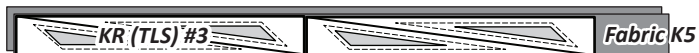


**Step 2:** Stack the four (4) fabric pieces beneath the (TLS), then cut on Line 1 to separate the individual sections. Clip the template pieces to the fabric beneath. Place the pieces in Bag #K2.

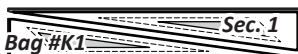


► **Fabric K5: (TLS) #3**

**Step 1:** Cut (2) 2-1/2" by 42" strips from *Fabric K5*. Stack the pieces facing *right-side up* on your cutting table. Place *Unit KR, (TLS) #3* on the stack and cut (4) pieces, matching the size of the Layout Sheet, repositioning the (TLS) as needed for each cut.



**Step 2:** Stack the four (4) fabric pieces beneath the (TLS), then cut on Line 1 to separate the individual sections. Clip the template pieces to the fabric beneath. Place the pieces in Bag #K1.



► **Fabric K6: (TLS) #5**

**Step 1:** Cut (1) 2" by 42" strip from *Fabric K6*. Place the strip facing *right-side up* on your cutting table. Place *Unit KR, (TLS) #5* on the stack and cut (4) pieces, matching the size of the Layout Sheet, repositioning the (TLS) as needed for each cut.



**Step 2:** Stack the four (4) fabric pieces beneath the (TLS), then cut on Line 1 to separate the individual sections. Clip the template pieces to the fabric beneath. Place the pieces in Bag #K1.



► **Fabric K7: (TLS) #7**

**Step 1:** Cut (1) 2-1/2" by 42" strip from *Fabric K7*. Place the strip facing *right-side up* on your cutting table. Place *Unit KR, (TLS) #7* on the stack and cut (4) pieces, matching the size of the Layout Sheet, repositioning the (TLS) as needed for each cut.



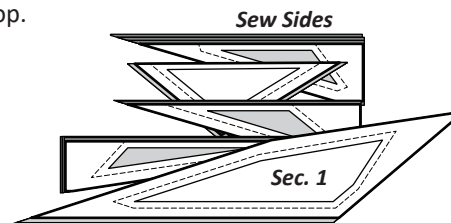
**Step 2:** Stack the four (4) fabric pieces beneath the (TLS), then cut on Line 1 to separate the individual sections. Clip the template pieces to the fabric beneath. Place the pieces in Bag #K1.



**STACKING: UNIT KL BAG #K2**

Position the templates and fabric pieces in numerical order facing *right-side up*, with the *sew-sides* aligned at the top. *Sec. 1* does not have a sew side.

**Stacking:** The stacking process begins with the largest *Sec. #* on the bottom. The pieces are stacked in reverse order finishing with *Sec. 1* on top.



**FOUNDATION PAPER PIECING: UNIT KL**

**NOTE - Tracing the Dashed Lines:** Place the foundation paper onto a light table. Flip the foundation paper over and trace the dashed lines printed on the front side of the foundation paper, onto the backside of the paper.

