

## GROUP C: PINEAPPLE BLOSSOM 68" BORDER INSTRUCTIONS

**Ziploc Storage Bags:** You will need (3) large bags to complete the organization for these instructions. Label the large bags as follows to stay organized while cutting the Foundation Units and Templates.

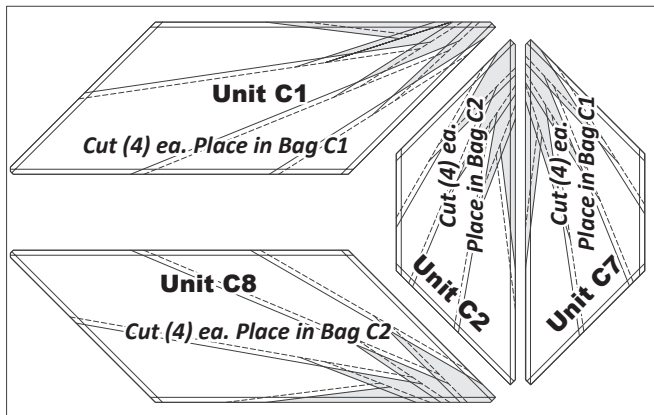
- Bag #C1: (4) ea. Unit C1, C3, C5, & C7, Foundation Papers
- Bag #C2: (4) ea. Units C2, C4, C6, & C8, Foundation Papers
- C-Template Bag: (TLS) #1 thru #16

### ► Preparing the Foundation Papers:

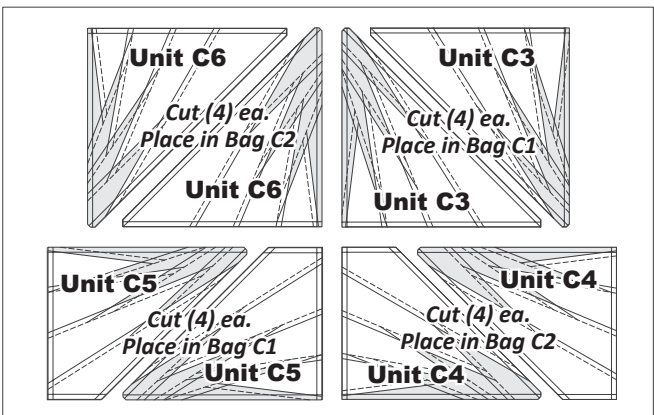
Cut out (4) ea. Unit C1 through Unit C8 [NP 946 and 947], place in assigned Bag #s listed above. Cut (1) of ea. Template Layout Sheet (TLS) #1 thru #16 [TP 757, 758, & 759] and place into the C-Template Bag. The newsprint graphics have been provide to help you identify the Unit #s and Templates referenced in your cutting instructions. The cutting instructions not only provide you with the required cutting information needed to cut out your pieces, they also provide you with the information you need to keep your Fabric, Templates, and Foundation Units organized, and sorted into their associated Bag #s. \*Refer back to Introduction Booklet for additional instructions on how to prepare your foundation papers and templates.

**NOTE - Template Reuse:** Templates and (TLS) are repositioned to achieve the number of cuts required on each strip in the Cutting Instructions. Please read carefully to ensure the correct # of pieces are stacked beneath each template before cutting.

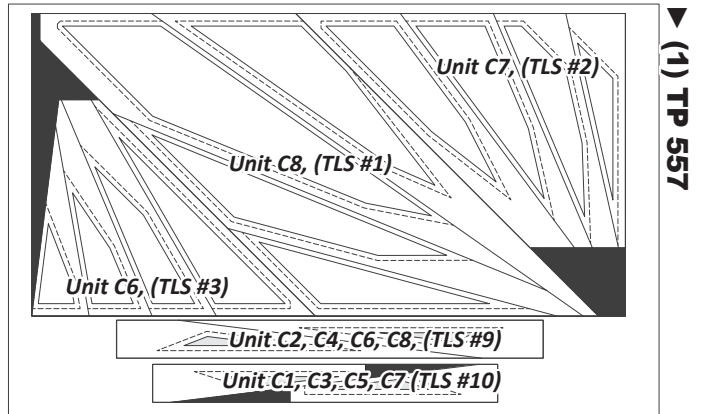
**NOTE - Repositionable Glue:** Is placed on the backside of each template to keep the (TLS) from moving in the cutting process, which allows you to remove and reposition the template when necessary.



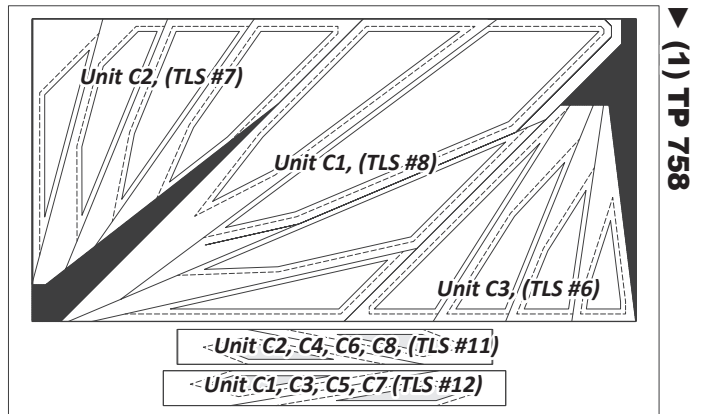
► (4) NP 946



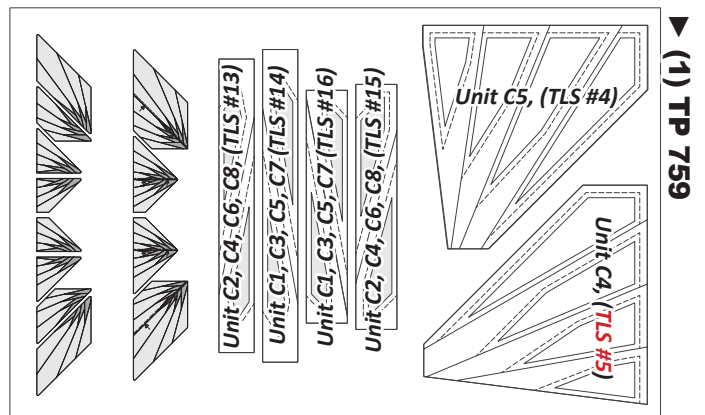
► (2) NP 947



► (1) TP 557



► (1) TP 758



► (1) TP 759

### ► Pineapple Blossom 68" Border Fabric Information:

The *Unit Chart* that follows includes Fabric #s, yardage/inches, and a reference to which fabrics go with each Template and (TLS) to make **Units C1-C8** and (TLS) #1-#16. The table is your guide for selecting your own colors and keeping you organized. Don't forget to cut a swatch of your chosen fabric to paste in the box under the Assigned Color column! A Color Layout at the top the page provides a visual reference of the location of each Fabric #.

#### ► Fabric C1, (TLS) #1

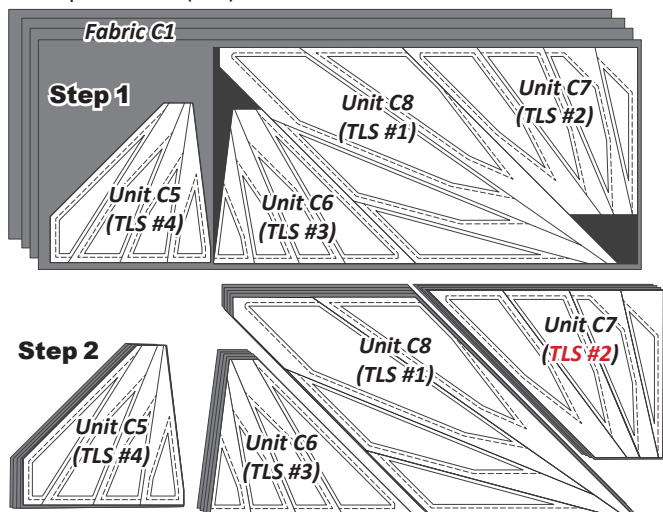
**NOTE - Using Quiltster:** If you precut your fabric strips using the Quiltster APP, you will need to sub-cut each 32" strip into (2) 16" strips to achieve the number of strips listed in Step 1.

**Step 1:** Cut (8) 16" by 42" strips from Fabric C1 and stack into (2) equal groups, facing *right-side up*.

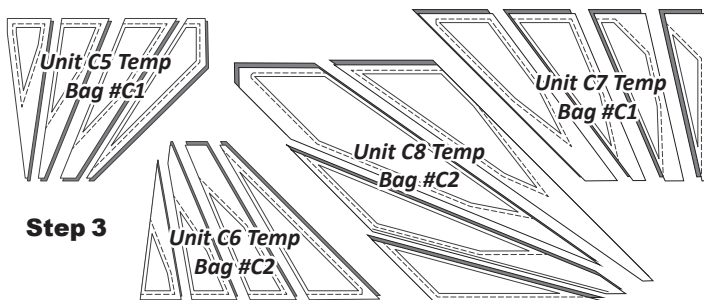
## Units C1–C8 Yardage, Make (4) ea.

GROUP-C FABRIC #	YARDAGE INCH	ASSIGNED COLOR
Fabric C1 Unit C1-C8, (TLS) #1–#8	3-5/8 yds or (128")	Fabric Swatch
Fabric C2 (TLS) #9 & #10	1/2 yd or (16")	Fabric Swatch
Fabric C3 (TLS) #11	1/4 yd or (8")	Fabric Swatch
Fabric C4 (TLS) #12	1/4 yd or (8")	Fabric Swatch
Fabric C5 (TLS) #13	1/4 yd or (8")	Fabric Swatch
Fabric C6 (TLS) #14	1/4 yd or (8")	Fabric Swatch
Fabric C7 (TLS) #15	1/4 yd or (9")	Fabric Swatch
Fabric C8 (TLS) #16	1/4 yd or (9")	Fabric Swatch

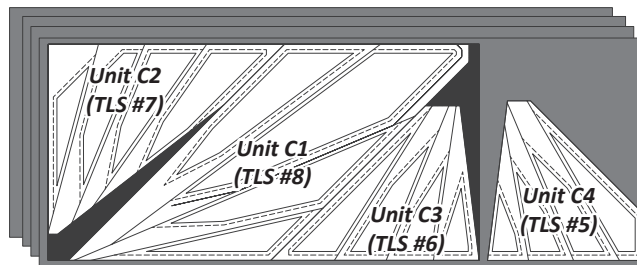
**Step 2:** Units C7, C8, C6, & C5, (TLS) #1 to (TLS) #4 are placed with the first set of strips. Position the layout sheets as shown, starting at the left and working to the right. Cut (4) pieces matching the size and shape of each (TLS).



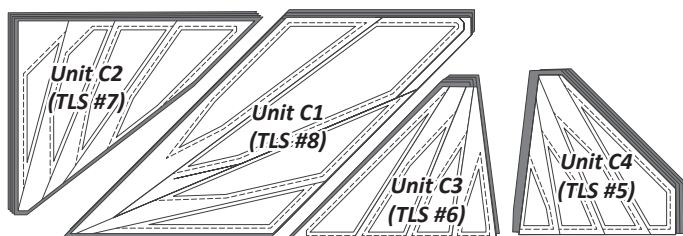
**Step 3:** Cut the (TLS) and the fabrics beneath on each Cut Line to separate the individual templates. Clip the templates to the fabric beneath and place with the Unit papers in their assigned Bag #s listed below on each group of Templates.



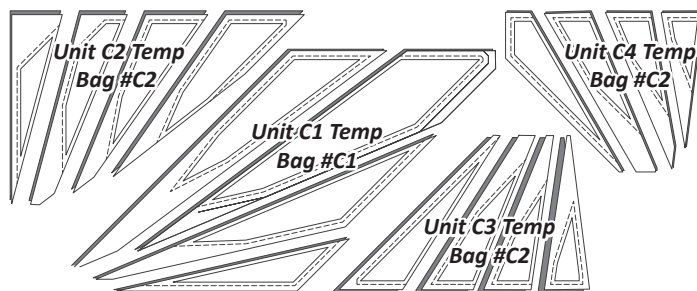
**Step 4:** Units C1, C2, C3, C4, (TLS) #5 to (TLS) #8 are placed with the second set of strips. Position the layout sheets as shown, and cut (4) pieces matching the size and shape of each (TLS).



**Step 5:** Cut the (TLS) and the fabrics beneath on each Cut Line to separate the individual templates.



**Step 6:** Clip the templates to the fabric beneath and place with the unit papers in their assigned Bag #s listed below.



## ► Color Layout

