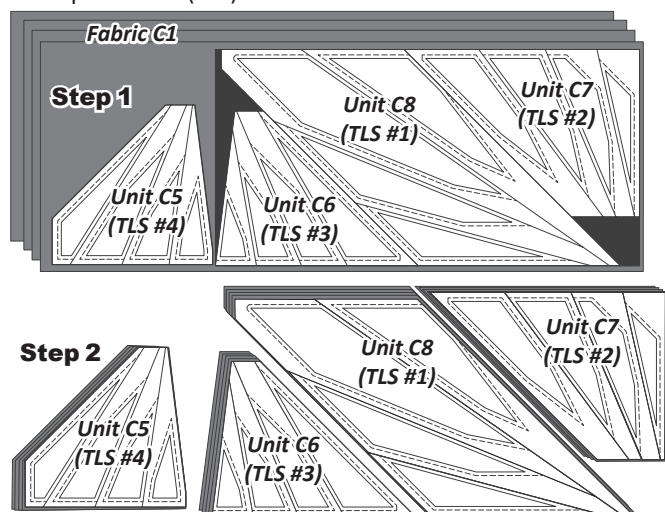


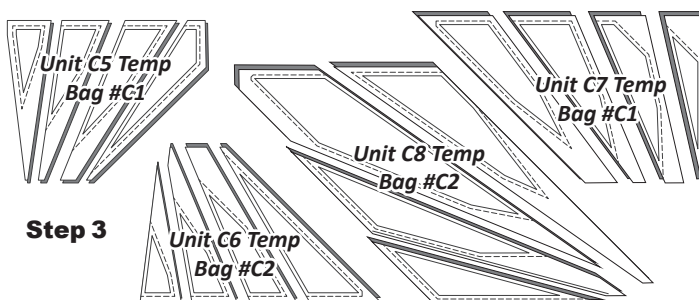
Units C1–C8 Yardage, Make (4) ea.

GROUP-C FABRIC #	YARDAGE INCH	ASSIGNED COLOR
Fabric C1 Unit C1–C8, (TLS) #1–#8	3-5/8 yds or (128")	Fabric Swatch
Fabric C2 (TLS) #9 & #10	1/2 yd or (16")	Fabric Swatch
Fabric C3 (TLS) #11	1/4 yd or (8")	Fabric Swatch
Fabric C4 (TLS) #12	1/4 yd or (8")	Fabric Swatch
Fabric C5 (TLS) #13	1/4 yd or (8")	Fabric Swatch
Fabric C6 (TLS) #14	1/4 yd or (8")	Fabric Swatch
Fabric C7 (TLS) #15	1/4 yd or (9")	Fabric Swatch
Fabric C8 (TLS) #16	1/4 yd or (9")	Fabric Swatch

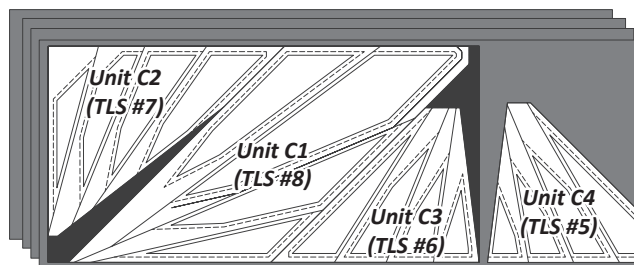
Step 2: Units C7, C8, C6, & C5, (TLS) #1 to (TLS) #4 are placed with the first set of strips. Position the layout sheets as shown, starting at the left and working to the right. Cut (4) pieces matching the size and shape of each (TLS).



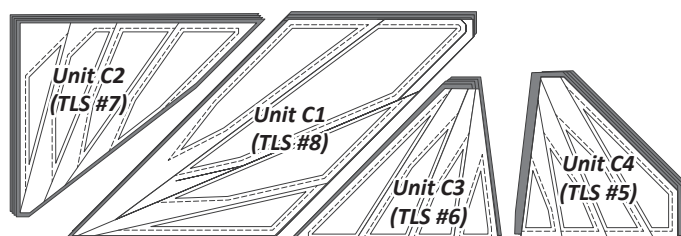
Step 3: Cut the (TLS) and the fabrics beneath on each Cut Line to separate the individual templates. Clip the templates to the fabric beneath and place with the Unit papers in their assigned Bag #s listed below on each group of Templates.



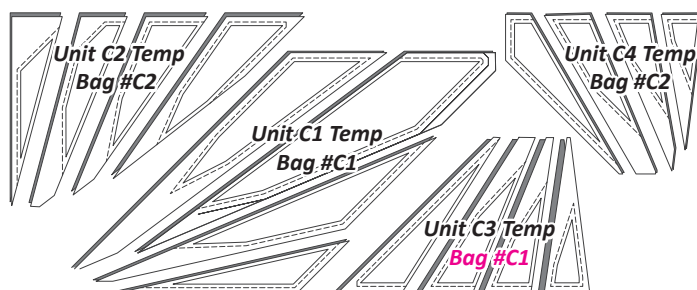
Step 4: Units C1, C2, C3, C4, (TLS) #5 to (TLS) #8 are placed with the second set of strips. Position the layout sheets as shown, and cut (4) pieces matching the size and shape of each (TLS).



Step 5: Cut the (TLS) and the fabrics beneath on each Cut Line to separate the individual templates.



Step 6: Clip the templates to the fabric beneath and place with the unit papers in their assigned Bag #s listed below.



► Color Layout

