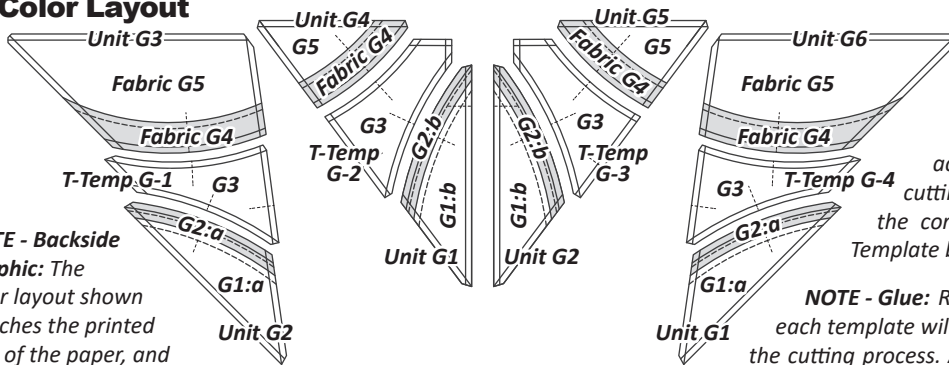


## ► Color Layout

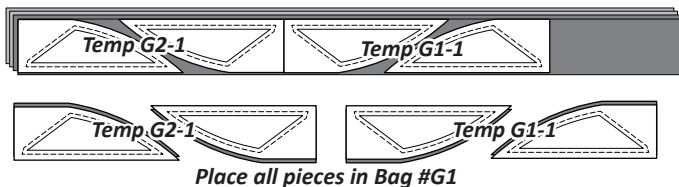


**NOTE - Backside Graphic:** The color layout shown matches the printed side of the paper, and the backside of the quilt.

**NOTE - Stacking strips:** Templates and (TLS) are repositioned on the cut strips to achieve the number of cuts required in the cutting Instructions. Please read carefully to ensure the correct # of pieces are stacked beneath each Template before cutting.

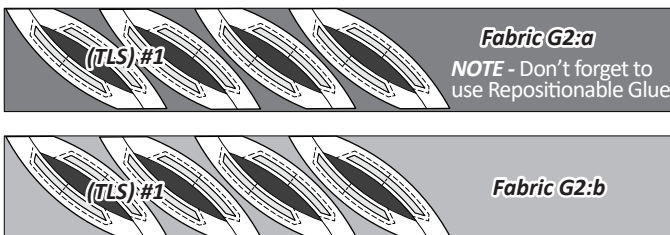
**NOTE - Glue:** Repositionable glue placed on the backside of each template will keep the templates and (TLS) from moving in the cutting process. After each cut simply reposition the template to the next location.

**Step 2:** Position **Unit G2, Template G2-1** and **Unit G1, Template G1-1** on the stacked strips. Cut **(4)** of each template from each of the **(2)** fabrics, repositioning the templates as necessary. Stack the fabric pieces under each template and use a paper clip to keep the fabric and template pieces together. Place in Bag #G1 with the foundation papers.



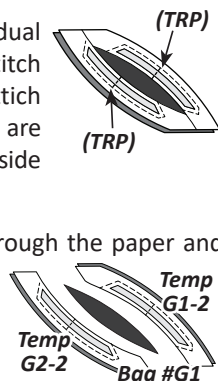
## ► Fabric G2:a & G2:b, (TLS) #1

**Step 1:** Cut **(1)** 6-1/2" by 42" strip each from **Fabric G2:a** and **G2:b**. Place both strips on your cutting table facing **right-side up**. Place **(4)** of **Units G1 & G2, (TLS) #1** onto each strip as shown. Cut **(4)** pieces from each strip, roughly matching the shape of the Layout Sheet, for **(8)** total. [Each fabric piece should have its own (TLS) paper.]



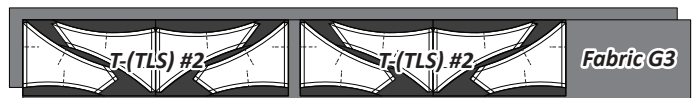
**Step 2:** Before cutting the (TLS) into individual pieces, sew the **(TRP)** lines. Set your stitch length on your machine to sew a basting stitch and sew on the lines. After the (TRP) Lines are sewn, trim the threads on the front and backside of each template.

**Step 3:** Complete the cutting by slicing through the paper and fabric on each **Cut Line** in numerical order to separate the individual sections. Place the template pieces with the foundation papers in Bag #G1.

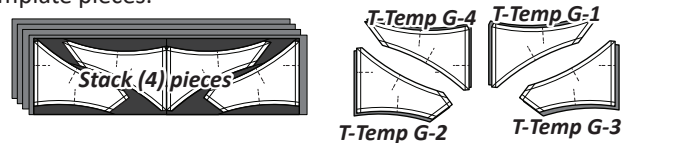


## ► Fabric G3, T-Temp (TLS) #2

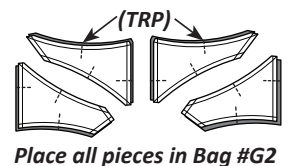
**Step 1:** Cut **(2)** 5" by 42" strips from **Fabric G3**. Stack the strips facing **right-side-up**. Position **Units G1 & G2 (TLS) #2** on the stacked strips. Cut **(4)** pieces the size and shape of the (TLS), repositioning the (TLS) as necessary.



**Step 2:** Stack the **(4)** fabric pieces beneath the (TLS). Clip the paper templates to the fabric beneath. The cutting is completed by cutting on each **Cut Line** in numerical order to separate the template pieces.

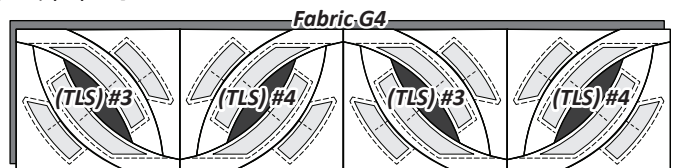


**Step 3:** Mark and sew the three **(TRP)** lines on each fabric piece. [For more information on marking and sewing (TRP) lines, refer to the General Piecing Instructions Section of the pattern. Stack the templates and place back in the G-Template Bag.]



## ► Fabric G4, (TLS) #3 & #4

**Step 1:** Cut **(1)** 9" by 42" strip from **Fabric G4** and place on your cutting table facing **right-side up**. Place **(2)** of **Units G3 & G4, (TLS) #3** and **(2)** of **Units G5 & G6, (TLS) #4** onto the strip as shown. Cut **(2)** fabric pieces for each (TLS), roughly matching the shape of the Layout Sheet. [Each fabric piece should have its own (TLS) paper.]



**Step 2:** Before cutting the (TLS) into individual pieces, sew the **(TRP)** lines. Set your stitch length on your machine to sew a basting stitch on the lines. After the (TRP) Lines are sewn, trim the threads on the front and backside of each template.

