

Steampunk Fairytale

Arctic Star 99" Queen Medallion Mixer

Quilt Size: 99" x 99"

GENERAL INFORMATION

The Steampunk Fairytale layout was designed by Judy and Bradley Niemeyer. It includes four sections referred to as Groups A, B, 16x16 and D, (there is no Group C). These group include blocks from the Arctic Star Mixer Series, which have been standardized so that you can use interchangeable blocks in each space. We selected the blocks listed in the next section for this project. The D group is a border that also fits any of the quilts in the Meadow Star Mixer series. It can be used for a wide range of quilts.

If you want to experiment and mix and match the pieces included here with those from other designs, Quiltster is the perfect tool for you to make a quilt completely your own. Likewise, you can use many of the groups in this pattern to make other layouts as well. Explore each of these layouts to learn new ways to incorporate these blocks into future projects as well!

Foundation Papers: The foundation papers, templates, and template layout sheets are printed on newsprint. Newsprint is lightweight and tears away from your stitches without damaging the threads. This pattern has been packaged with enough papers to complete one 99" x 99" quilt. Use the list below to sort and verify that your pattern was packaged with the correct papers. The NP-# (or TP-#) is printed along the edge of each page.

JNQ-2217DIA-014

Log Cabin Star

(2) NP 629

(1) TP 401

JNQ00281-B-003

Pyramid Star Border

(2) NP 913

(1) NP 914

(1) TP 736

JNQ16X16016 Four

Block Feathered Star

(4) NP 733

(2) NP 740

(2) NP 741

JNQ00264-D-004 Broken

Wheel Border

(4) NP 950

(4) NP 951

(4) NP 952

(4) NP 953

(1) TP 761

(1) TP 762

(1) TP 763

(1) TP 764

Quilt Assembly

(1) LP 98

SUPPLY LIST

General Supply List: Steam iron, ironing board, medium size cutting board, 6" by 24" ruler, small scissors, rotary cutter, seam ripper, and a sewing machine with a quarter-inch foot.

Paper Piecing Supply List: 12" and 18" Add-A-Quarter rulers, Scotch tape, fabric glue stic, washout fabric glue pen, a fold template, flower pins, large Ziploc bags, repositionable glue, curved diamond cutting and trimming ruler, **Judy's Mini Arc Ruler set**, a Purple Thang, size 70 sewing needles, and a high-quality cotton thread. Other handy items used to keep your templates, fabrics, and papers organized, are paper clips and binder clips.

NOTE - Classes with Instructors: Be sure to check with your instructor if you are taking a class. Sometimes their supply lists are specific to their teaching program and vary from the recommendations above.

DEFINITION COMMON TOOLS AND TERMS

Purple Thang: A small plastic tool used like a stiletto that does not poke through the fabric. It is used to guide the fabric between the presser foot and feed dogs when sewing over several layers of stacked seams.

Add-A-Quarter Ruler: A small ruler with a quarter-inch lip on the bottom side used to trim the quarter-inch seams for Foundation Paper piecing. These can be purchased in three (3) sizes: 6", 12", and 18" rulers. It is our recommendation you purchase the 18" ruler for this pattern.

Curved Diamond Cutting and Trimming Ruler: This is a ruler designed by Judy and Bradley Niemeyer as part of the Dinner Plate Dahlia Technique of the Month pattern. If you have already purchased this pattern, you should already have the ruler. If not, you can purchase the ruler through your local quilt shop or Quiltworx.com. The curved edge makes the concave/convex trimming much safer, easier, and more accurate. We highly recommend this tool. While it does not fit every curve exactly, it can be rolled around each curved edge in a manner that will provide you with a very accurate cut.

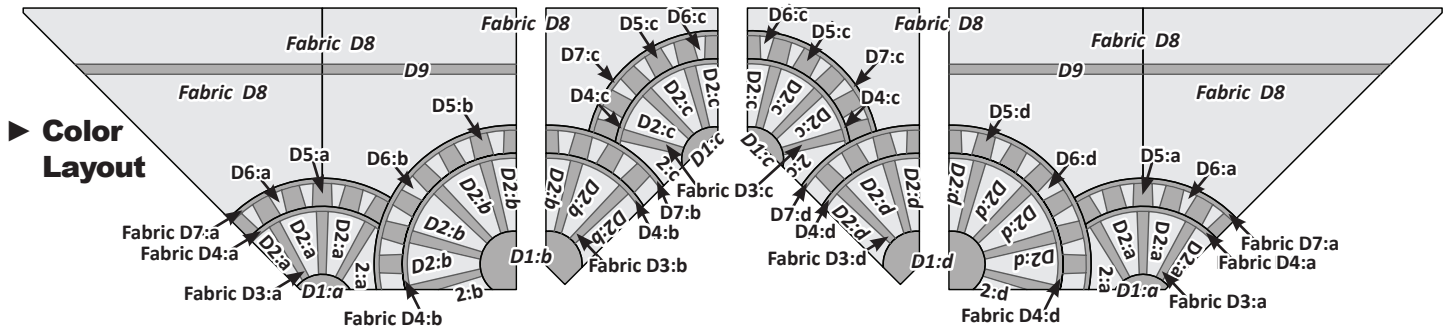
Washout Fabric Glue Stic, Repositionable Glue, and Glue Pen: I use a water soluble glue stic to adhere the first piece of fabric to the backside of the foundation paper. Repositionable glue helps secure templates to fabric during cutting, while still being able to easily move and remove them without leaving a residue. We use the glue pen to temporarily glue the raw edges together before sewing any long straight or curved seams.

Flower Pins: Flower pins are a long pin with a flat flower glued to the head of each pin. The flower is flat so the paper can easily be folded back over the pin and still lay flat.

Fold Template: A flat piece of template plastic used as a straight edge while folding back the foundation papers just before trimming with the **Add-A-Quarter** ruler. A 3" by 12" piece of template plastic should be cut to use with the 12" **Add-A-Quarter**. A 3-1/2" by 18" piece is cut for the 18" ruler.

Corrections: Find any corrections by going to www.quiltworx.com, and navigating to *Products > Corrections*, then scrolling down to *Steampunk Fairytale*. Or, visit the pattern page under *Products > Patterns > Steampunk Fairytale* and look for a *Corrections* list in the column on the right side of the page. Scanning the code to the right will take you straight to the website pattern page. Check the pattern version and print date on the back of this pattern. If the corrections are dated before your print date, your pattern is up to date! If there is a different version number referenced, the corrections don't apply to your pattern. If there are no corrections listed, no errors have been identified in your pattern! If you run across something you think may be an error, please let us know and we will either post a correction or clarify the issue for you.





Front Side Layout. On the Backside, the :b group and :d groups would be switched.

► **Fabric Information:**

The Unit Charts on the previous page include yardage, fabric numbers, and a reference to which fabrics go with the Templates and (TLS) to complete Units D1 to D16. They are your guide for not only selecting your own colors, but keeping you organized. Don't forget to cut a swatch of your chosen fabric to paste in the box in the *Assigned Color* column! For a graphical look at where the Fabric references pair with the Foundation Units and T-Templates for the Wagon Wheel Border, refer to the *Color Layout* above.

CUTTING INSTRUCTIONS

Reference Page 35 as you are setting up Bags D1 to D5 for help staying organized.

► **Fabric D1:a & D1:c: (T-TLS) #1**

Step 1: Cut (1) 1-3/4" x 42" strip from each *Fabric D1:a* and *D1:c*. Position each strip facing *wrong-side up* separately. *T-Template Layout Sheets #1* is used to cut (4) rectangles from each *Fabric D1:a* and *D1:c* matching the size of each (T-TLS).



Step 2: Repositionable glue is used to adhere the layout sheets printed-side up to the wrong-side of each fabric strip. Set the stitch length on your machine to the desired TRP basting stitch length (Judy used 2.0) and sew the TRP Lines printed on each layout sheet.



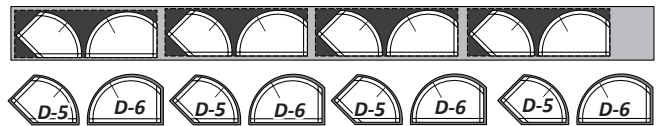
Step 3: After the (TRP) Lines are sewn, complete the cutting around each template. *The Judy's Mini Arc Template Set can help with the cutting around the small half circle available for purchase separately if desired.* The T-Templates, are not used for paper piecing. You must cut them to the exact size of the template.



Step 4: After the cutting is complete, place the pieces in Bag #D1. Do not remove the paper. The paper is used as a stabilizer during the curved piecing process.

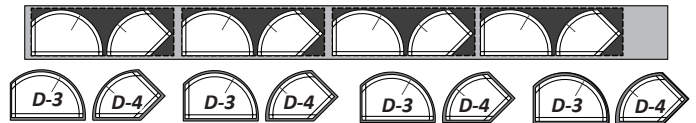
► **Fabric D1:b: (T-TLS) #2**

Step 1: Cut (1) 3-1/2" x 42" strip from *Fabric D1:b*. Position the strip facing *wrong-side up*. *T-Template Layout Sheet #2* is used to cut (4) rectangles from *Fabric D1:b* matching the size of the (T-TLS). Refer back to the previous instructions for *Fabric D1:a* & *D1:c*, **Steps 2 & 3** to complete the cutting. Once the fabric is trimmed to the exact size of each T-Template, the pieces are placed in Bag # D2. (Graphic in next column).



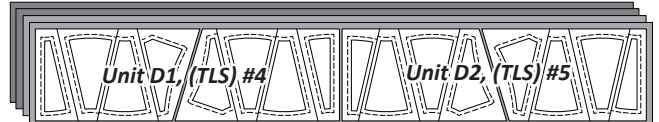
► **Fabric D1:d: (T-TLS) #3**

Step 1: Cut (1) 3-1/2" x 42" strip from *Fabric D1:d*. Position the strip facing *wrong-side up*. *T-Template Layout Sheet #3* is used to cut (4) rectangles from *Fabric D1:d* matching the size of the (T-TLS). Refer back to the previous instructions for *Fabric D1:a* & *D1:c*, **Steps 2 & 3** to complete the cutting. Once the fabric is trimmed to the exact size of the T-Template, the pieces are placed in Bag # D2.



► **Fabric D2:a & D2:c: Unit D1 & D2, (TLS) #4 & #5**

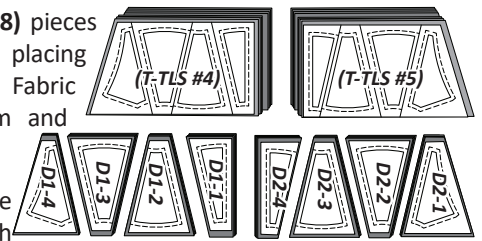
Step 1: Cut (2) 6-1/2" x 42" strips from each *Fabric D2:a* and



Fabric D2:c. Stack the (4) strips facing *right-side up*, with *Fabric D2:c* on the bottom ending with *D2:a* on the top. *Unit D1, (TLS) #4* and *Unit D2, (TLS) #5* are used to cut (8) pieces matching the size and shape of the (TLS).

Step 2: Starting at the left edge of your strip, position (TLS) #4 along the edge of your strips. Cut (4) pieces, then rotate the template and cut (4) additional pieces. Position (TLS) #5 along the right edge of your strip and cut (4) pieces, then rotate the template and cut the last (4) pieces.

Step 3: Stack the (8) pieces beneath each (TLS) placing the pieces cut from *Fabric D2:c* on the bottom and *D2:a* on the top.



Step 4: Complete the cutting on each cut line, to separate the individual section templates. Clip the templates to the fabric beneath and place into Bag #D1.

Steampunk Fairytale

Arctic Star 99" Queen Medallion Mixer

99" x 99"



► Judy's Mini Arcs Ruler Set

Judy has created a Mini Arcs Ruler Set that will help in trimming the hubs of the Broken Wheel Border. We reference where they should be used, on Page 23 of the pattern! These should be purchased separately and are a great tool for trimming small arcs. The ruler set is sold separately because it is compatible with many Quiltworx designs. Watch our website in September/October of 2023, for more detail and to get yours today!



► Quiltster Compatible

Quiltworx.com has loaded a mixer layout for *Steampunk Fairytale* into Quiltster. This layout can be colored with your own Fabric Swatches to preview your quilt before you make it! Use Quiltster to mix and match these blocks with others to create your own unique design! To get Quiltster, visit Quiltster.com!

JNQ00281P12

JNQ-2217DIA-014

Log Cabin Star

(2) NP 629

(1) TP 401

JNQ00281-B-003

Pyramid Star Border

(2) NP 913

(1) NP 914

(1) TP 736

JNQ16X16016 Four

Block Feathered Star

(4) NP 733

(2) NP 740

(2) NP 741

JNQ00264-D-004

Broken Wheel Border

(4) NP 950

(4) NP 951

(4) NP 952

(4) NP 953

(1) TP 761

(1) TP 762

(1) TP 763

(1) TP 764

Quilt Assembly

(1) LP 98

FABRIC #	YDS	FABRIC INVENTORY
AJ4, AJ5, BF2, BF3	1	PWTH134.PATINA
AJ12, S2, S4, S5, S7, D1:a, D1:c, D2:b, D2:d	2 3/8	PWTH115.PATINA-B
B2:a, B2:c, B2:e, B2:g, S6, S8, D9	1 1/8	PWTH115.8SAGE
D5:b D5:d	5/8	PWTH135.SIENNA
AJ6, AJ7, B2:b, B2:d, B2:f, B3, D5:a, D5:c	1 5/8	PWTH138.PATINA
AJ1	1/8	PWTH115.8LINE
AJ2, AJ3, BF4, BF5	3/8	PWTH115.8AMBE
B1, D3:a, D3:c, D4:a, D4:b, D4:c, D4:d, D7:a, D7:b, D7:c, D7:d, D8	7 1/4	PWTH020.NIGHTFALL
AJ8, AJ9, AJ10, AJ11, AJ13, B4, BF1, S1, S3, D1:b, D1:d, D2:a, D2:c, D3:b, D3:d, D6:a, D6:b, D6:c, D6:d	7 3/8	CSFSESS.LICOR
BACKING, BINDING, AND BATTING		
BACKING	9	As Desired
BATTING	3	120" Roll Hobbs 80/20
BINDING	7/8	PWTH020.NIGHTFALL

Visit us on:



© Copyright February 2022

Pattern: *Steampunk Fairytale V1-082023*

All rights reserved. No part of this pattern can be reproduced in any form for any commercial purpose without the expressed written permission of Quiltworx.com. The written instructions, foundation papers, graphics, and photographs for this pattern were designed as a package for the purpose of retail sales and as a result, fall under the protection of the federal copyright laws of the United States of America. Extra materials may be obtained from local quilt shops or directly from Quiltworx.com.

Quiltworx.com
Judy Niemeyer Quilting

E-mail: info@quiltworx.com • Web: www.quiltworx.com



Print Date: 08-14-23