

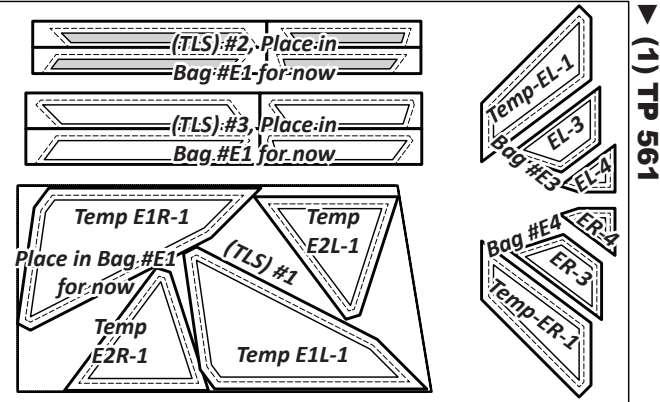
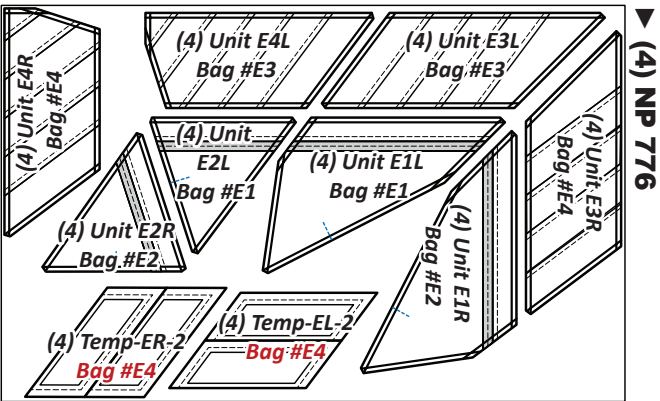
GROUP E: STRIPED BORDER INSTRUCTIONS

Ziploc Storage Bags: You will need **(4)** bags to complete the organization for these instructions. Label the bags as follows to stay organized while cutting the Foundation Units and Templates.

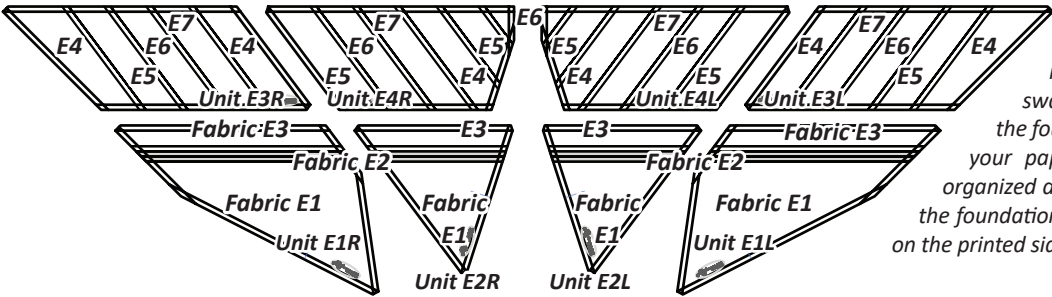
- Bag #E1: **(4)** ea. Unit E1L and E2L Foundation Papers.
- Bag #E2: **(4)** ea. Unit E1R and E2R Foundation Papers.
- Bag #E3: **(4)** ea. Unit E3L and E4L Foundation Papers.
- Bag #E4: **(4)** ea. Unit E3R and E4R Foundation Papers.

► **Preparing Foundation Papers & Templates:**

Cut out **(4)** each of Units E1L-E4L, Units E1R-E4R, Templates ER-2 & EL-2 [NP 776]. Cut **(1)** each of the Templates and Template Layout Sheets on [TP 561]. The Templates and Template Layout Sheets (TLS) are cut out and placed in a temporary bag. After the fabric has been cut the individual Sec. Templates are sorted and placed into their assigned Bag #s with their associated foundation papers. See the newsprint graphics that follow for information on how to organize your units and templates into bags. **Refer back to General Information for Foundation papers and templates for additional instructions on how to prepare your foundation papers and templates.*



► **Fabric Swatch & Color Layout**



NOTE - Reusing Templates: Templates and (TLS) are repositioned on the cut strips to achieve the number of cuts required in the cutting Instructions. Please read carefully to ensure the correct # of pieces are stacked beneath each Template before cutting.

Units E1L, E2L, E1R, E2R Template Layout Sheet #1: These **(4)** templates have been grouped together onto one (TLS). When preparing these pieces, cut on the large dashed lines printed around the perimeter of the **(4)** templates. The templates are not separated until after the cutting is completed with your fabric.

► **Striped Border Fabric Information:**

The *Unit Chart* that follows includes yardage, fabric numbers, and a reference to which fabrics go with the Templates and (TLS) to complete **Units E1L-E4L & E1R-E4R**. A color layout, shown below the chart, gives a visual reference to where the fabrics are located on each unit. It is shown from the backside, but it does not matter, as the color layout is the same on the back as on the front.

Units E1L-E4L & E1R-E4R Yardage, Make (4) ea.		
GROUP E-001 FABRIC #	YARDAGE INCH	ASSIGNED COLOR
Fabric E1: Unit E1L, E1R, E2L, E2R, (TLS) #1	<u>5/8 yd</u> or (22")	Fabric Swatch
Fabric E2: Unit E1L, E1R, E2L, E2R, (TLS) #2	<u>1/4 yd</u> or (6")	Fabric Swatch
Fabric E3: Unit E1L, E1R, E2L, E2R, (TLS) #3	<u>1/4 yd</u> or (8")	Fabric Swatch
Fabric E4: Unit E3L & E4L, Temp EL-2; Unit E3R & E4R, Temp ER-2; Unit E3L, Temp EL-1; & Unit E3R, Temp ER-1	<u>1/2 yd</u> or (18")	Fabric Swatch
Fabric E5: Unit E3L & E4L, Temp EL-2; Unit E3R & E4R, Temp ER-2; Unit E4L, Temp EL-3; & Unit E4R, Temp ER-3	<u>3/8 yd</u> or (12")	Fabric Swatch
Fabric E6: Unit E3L & E4L, Temp EL-2; Unit E3R & E4R, Temp ER-2; Unit E4L, Temp EL-4; & Unit E4R, Temp ER-4	<u>3/8 yd</u> or (12")	Fabric Swatch
Fabric E7: Unit E3L & E4L, Temp EL-2 & Unit E3R & E4R, Temp ER-2	<u>3/8 yd</u> or (12") ea.	Fabric Swatch

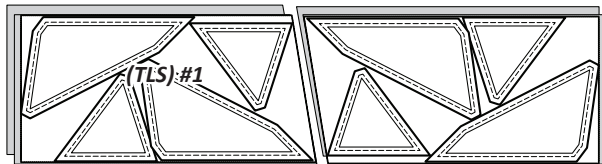
NOTE - Swatches: For units E3L, E3R, E4L, and E4R, you may want to cut and paste a small swatch of fabrics onto each Sec. # on the foundation papers before you begin your paper piecing. This will keep you organized as you sew the strips onto each of the foundation units. Place the fabric swatches on the printed side of the paper.

NOTE - Stacking strips: *Templates and (TLS) are repositioned on the cut strips to achieve the number of cuts required in the cutting Instructions. Please read carefully to ensure the correct # of pieces are stacked beneath each Template before cutting.

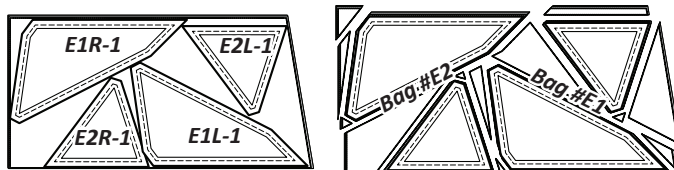
NOTE - Glue: Repositionable glue placed on the backside of each template will keep the templates and (TLS) from moving in the cutting process. After each cut, simply reposition the template to the next location.

► Fabric E1: (TLS) #1

Step 1: Cut (2) 11" by 42" strips from Fabric E1. The strips are stacked facing **right-side up**. The **Unit E1L, E1R, E2L, & E2R, (TLS) #1** is used to cut (4) pieces matching the size and shape of the (TLS).



Step 2: The (4) pieces are stacked beneath the (TLS). Repositionable glue will keep the templates from moving in the cutting process. Four (4) pieces are cut for each individual template. The left template pieces are placed in Bag #E1, and the right pieces are placed in Bag #E2.



► Fabric E2: (TLS) #2

Step 1: Cut (2) 3" by 42" strips from Fabric E2. Stack the strips facing **right-side up**. The **Unit E1L, E1R, E2L, & E2R, (TLS) #2** is used to cut (4) pieces the size of the (TLS), repositioning the template as necessary.



Step 2: The (4) pieces are stacked beneath the (TLS). Clip the paper templates to the fabric beneath. The cutting is completed by cutting on each **Cut Line** to separate the template pieces. Place the left templates in Bag #E1 and the right templates in Bag #E2.



► Fabric E3: (TLS) #3

Step 1: Cut (2) 4" by 42" strips from Fabric E3. Stack the strips facing **right-side up**. The **Unit E1L, E1R, E2L, & E2R, (TLS) #3** is used to cut (4) pieces the size of the (TLS), repositioning the template as necessary.

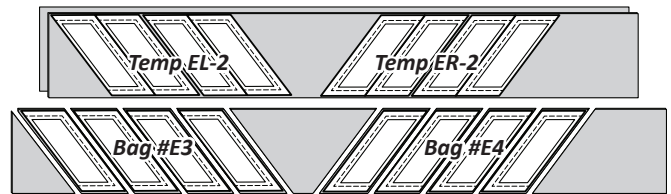


Step 2: The (4) pieces are stacked beneath the (TLS). Clip the paper templates to the fabric beneath. The cutting is completed by cutting on each **Cut Line** to separate the template pieces. Place the left templates in Bag #E1 and the right templates in Bag #E2.

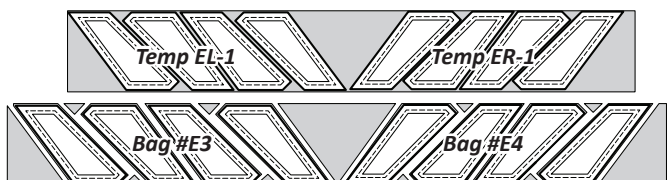


► Fabric E4: (Temp EL-1, ER-1, EL-2, ER-2)

Step 1: Cut (3) 6" by 42" strips from Fabric E4. Stack (2) strips facing **right-side up**. Position (1) **Unit E3L & E4L, Temp EL-2** and (1) **Unit E3R & E4R, Temp ER-2** atop the stacked strips, repositioning the templates as needed to cut (8) single fabric pieces from each template. Place the left templates in Bag #E3 and the right templates in Bag #E4.

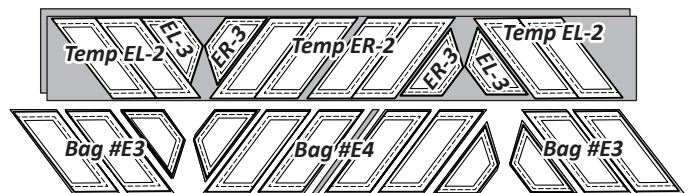


Step 2: Stack the (3rd) strip facing **right-side up**, and position the **Unit E3L, Temp EL-1** and **Unit E3R, Temp ER-1** atop the strip. Cut (4) single template pieces from each template, repositioning the template as needed. Place the left templates in Bag #E3 and the right templates in Bag #E4.



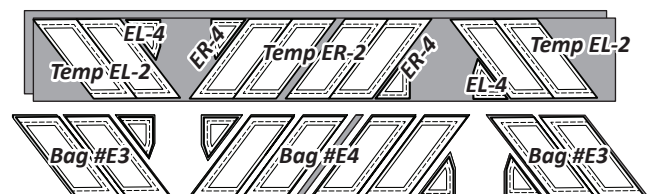
► Fabric E5: (Temp EL-2, ER-2, EL-3, ER-3)

Step 1: Cut (2) 6" by 42" strips from Fabric E5. Stack the (2) strips facing **right-side up**. Position (1) **Unit E3L & E4L, Temp EL-2 & EL-3** and (1) **Unit E3R & E4R, Temp ER-2 & ER-3** atop the stacked strips, repositioning the templates as shown to cut (8) single fabric pieces from each **EL-2** and **ER-2** template. Cut (4) single fabric pieces each for **Temp EL-3** and **ER-3**. Place the left templates in Bag #E3 and the right templates in Bag #E4.



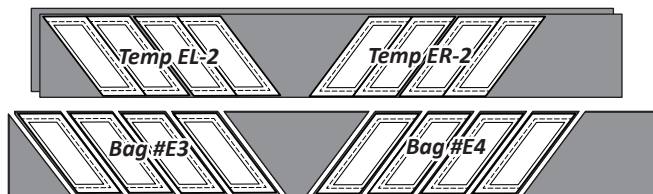
► Fabric E6: (Temp EL-2, ER-2, EL-4, ER-4)

Step 1: Cut (2) 6" by 42" strips from Fabric E6. Stack the (2) strips facing **right-side up**. Position (1) **Unit E2L & E4L, Temp EL-2 & EL-4** and (1) **Unit E2R & E4R, Temp ER-2 & ER-4** atop the stacked strips, repositioning the templates as shown to cut (8) single fabric pieces from each **EL-2** and **ER-2** template. Cut (4) single fabric pieces for **Temp EL-4** and **ER-4**. Place the left templates in Bag #E3 and the right in Bag #E4.



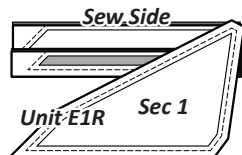
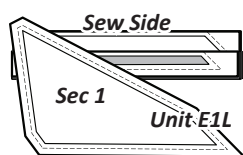
► Fabric E7: (Temp EL-2, ER-2)

Step 1: Cut (2) 6" by 42" strips from *Fabric E7*. Stack the (2) strips facing **right-side up**. Position (1) **Unit E2L & E4L, Temp EL-2** and (1) **Unit E2R & E4R, Temp ER-2** atop the stacked strips, repositioning the templates as shown to cut (8) single fabric pieces from each template. Place the left templates in Bag #E3 and the right in Bag #E4.

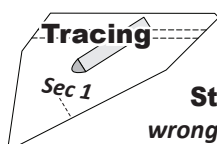


■ STACKING: UNIT E1L, E1R, BAGS #E1 & E2

Stacking: The stacking process begins with the largest Sec. # on the bottom of each stack. The pieces are stacked in reverse order, finishing with Sec. 1 on top. The paper piecing instructions are written using the graphics for Unit E1R.

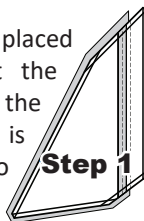
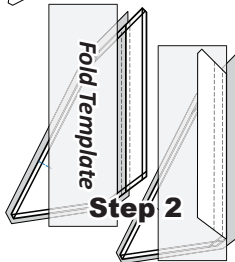


■ FOUNDATION PIECING: UNIT E1R



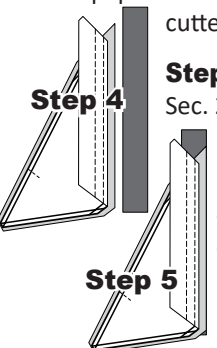
NOTE - Tracing: Trace the Dashed Lines onto the backside of the paper to help with placement.

Step 1: The first piece of fabric is placed **wrong-side up** on your table. Lift the foundation paper, slide the fabric under Sec. 1. Glue is used to adhere the fabric to the backside of the paper. Repeat Step 1 for each foundation paper.



Step 2: Place the fold template over the top of Sec. 1. Line the edge up with the solid black line marked Line 1. Fold the paper back over the top of the fold template.

Step 3: Place the **Add-A-Quarter** ruler next to the folded paper and trim the fabric with your rotary cutter.



Step 4: Place the fabric piece for Sec. 2 **right-side up** next to the folded back paper.

Step 5: Lift the paper, and slide the fabric under Sec. 1, lining the sew-side up with the trimmed seam allowance. Repeat **Steps 2–5** for each foundation paper before moving onto Step 6.

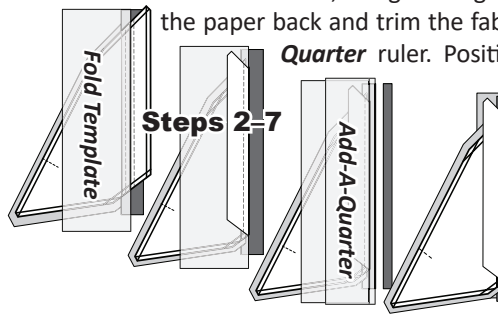


Step 6: Open the paper and sew on Line 1. The stitches should start and stop about 1/8" past the beginning and the end of each stitch line. Complete the sewing on each unit before moving onto the next step.

Step 7: Loosen the glue under Sec. 1, then press the fabric pieces open on the backside of each paper.

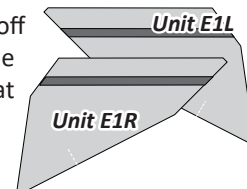
Step 7

Repeat Steps 2–7: Position the fold template over the top of Sections 1 and 2, lining the edge up with Line 2. Fold the paper back and trim the fabric with the **Add-A-Quarter** ruler. Position the third fabric piece **right-side up** next to the paper. Lift the paper and slide the fabric under Sec. 3. Open the paper, sew on Line 2, and press.



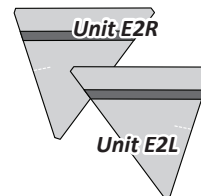
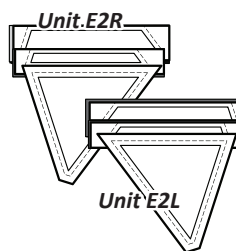
TRP Lines: Before you complete the final trimming, you need to sew the (TRP) lines using a 2.8 stitch length.

Step 8: Trim the excess fabric off around the edge of the paper, on the exterior line. Return to Step 1 and repeat the same process for Unit E1L.



■ UNITS E2L & E2R

Units E2L and E2R are completed using the previous steps to complete the piecing process. Stack the template pieces in the sewing order.



■ FOUNDATION PIECING: UNITS E3L, E4L, E3R, E4R, BAGS #E3 & E4

Stacking: The stacking process begins with the largest Sec. # on the bottom, finishing with Sec. 1 on top. We have added the Fabric #s E4–E7 labels on the template pieces in each stack. You may want to cut and paste a small swatch of fabric onto each Sec. # on the foundation papers before you begin your paper piecing. This will keep you organized as you sew the the strips onto each of the foundation units.

