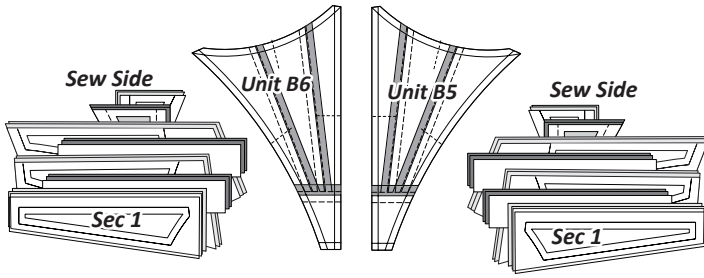


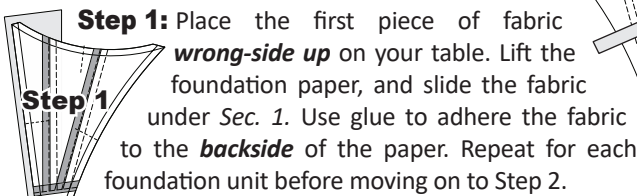
## STACKING: UNITS D5 & D6 (SASHING OPTION)

The D5 and D6 units are stacked and assembled the same. The template pieces are stacked in the sewing order starting with the largest Sec. # on the bottom, finishing with Sec. 1 on top.



## FOUNDATION PAPER PIECING: UNIT D5 & UNIT D6

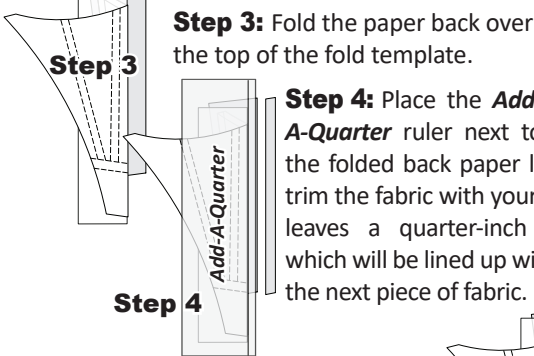
*NOTE - Tracing the Dashed Lines: Optional.*



**Step 1:** Place the first piece of fabric *wrong-side up* on your table. Lift the foundation paper, and slide the fabric under Sec. 1. Use glue to adhere the fabric to the *backside* of the paper. Repeat for each foundation unit before moving on to Step 2.

*NOTE - Fabric Placement: The wrong-side of the fabric is against the backside of the paper. The fabric must extend beyond the edges of the dashed lines to cover the underneath side of Sec. 1.*

**Step 2:** Place the fold template over the top of Sec. 1, lining the edge up with the solid black line marked Line 1.



**Step 3:** Fold the paper back over the top of the fold template.

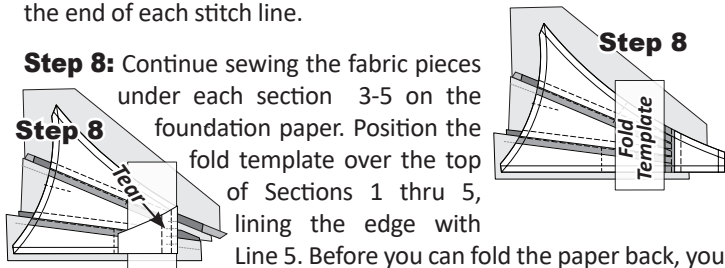
**Step 4:** Place the *Add-A-Quarter* ruler next to the folded back paper lip-side down, and trim the fabric with your rotary cutter. This leaves a quarter-inch seam allowance which will be lined up with the sew-side on the next piece of fabric.

**Step 5:** Place the fabric piece for Sec. 2 *right-side up* next to the folded back paper.

**Step 6:** Lift the foundation paper, and slide the fabric under Sec. 2. Repeat *Steps 2-6* for each foundation paper before moving onto Step 7.

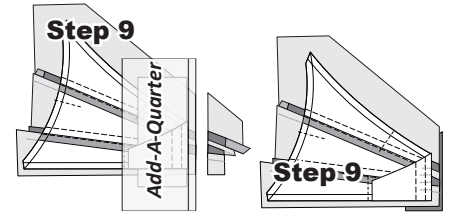
**Step 7:** Fold open the paper and sew on Line 1. The stitches should start and stop about 1/8" past the beginning and the end of each stitch line.

**Step 8:** Continue sewing the fabric pieces under each section 3-5 on the foundation paper. Position the fold template over the top of Sections 1 thru 5, lining the edge with Line 5. Before you can fold the paper back, you



will need to tear the paper along each stitch line, stopping when you hit the fold template.

**Step 9:** Trim the fabric with the *Add-A-Quarter* ruler, and position the Sec 6 fabric *right-side-up* next to the paper. Lift the paper and slide the fabric in position under Sec. 3.

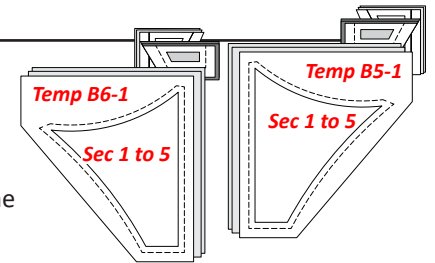


**Step 10:** Open the paper, sew on Line 2, and press. Repeat this process with the last sections on the foundation paper.

**Step 11:** When the piecing is done, sew the (TRP) Lines. Trim the threads, then trim the excess fabric and paper off around the perimeter of the exterior dark line printed on the foundation paper. Do not remove the foundation paper at this time. Place these pieces into Bag #D3.

## STACKING: UNIT D5 & D6 (SOLID BASKET OPTION)

The stacking for the alternative basket is very much the same as the previous units. The only difference is the Fabric # one is *placed under Sec. 1 to 5*.



## FOUNDATION PAPER PIECING: UNIT D9

*NOTE - Tracing the Dashed Lines: Trace only Line 5 & 6.*

**Step 1:** Place the first piece of fabric *wrong-side up* on your table. Lift the foundation paper, and slide the fabric under Sec. 1. Use glue to adhere the fabric to the *backside* of the paper. Repeat for each foundation unit before moving on to Step 2.

*NOTE - Remember: The wrong-side of the fabric is against the backside of the paper.*

**Step 2:** Place the fold template over the top of Sec. 1. Fold back the paper and trim a 1/4" seam allowance which will be lined up with the sew-side on the next piece of fabric.

**Step 3:** Position the 2<sup>nd</sup> piece of fabric under Sec. 6 and continue with the process.

**Step 4:** When the paper piecing is done, for both basket units, sew the (TRP) Lines, trim the threads on the front and backside of the paper, then trim the excess fabric and paper off around the perimeter of the exterior lines printed on the foundation paper. Do not remove the foundation paper at this time. Place these pieces into Bag #D3.

## CURVED PAPER PIECING UNITS D1-D4, D7 & D8, BAG #D4

Units D1-D4, then D7 & D8 are paired with the template pieces for basket handles, basket rim, and basket base. There are only two templates per unit so stacking is a waste of time.



**Assembly Graphic 3:** Join the following pieces, left to right. Press in the direction the arrows are pointing.

- **Left Group:** ea. Unit D5 to Group L-1. T-Temp D-7 to Group L-3. T-Temp D-6 to Group L-7.
- **Right Group:** Unit D6 to Group R-2. T-Temp D-8 to Group R-4. T-Temp D-9 to Group R-8.

**Assembly Graphic 4:** Join the following pieces, left to right. Press in the direction the arrows are pointing

- Left Group: Unit D7 to Block Group L-1.
- Right Group: Unit D8 to Block Group R-2.

**Assembly Graphic 5:** Join the following pieces, left to right. Press in the direction the arrows are pointing

- Left Group: Block Group L-1 to L-5.
- Right Group: Block Group R-2 to R-6.

**Assembly Graphic 6:** Join the following pieces, left to right. Press seams toward the right.

- Left Group: Block Group L-7 to L-1.
- Right Group: Block Group R-8 to R-2.

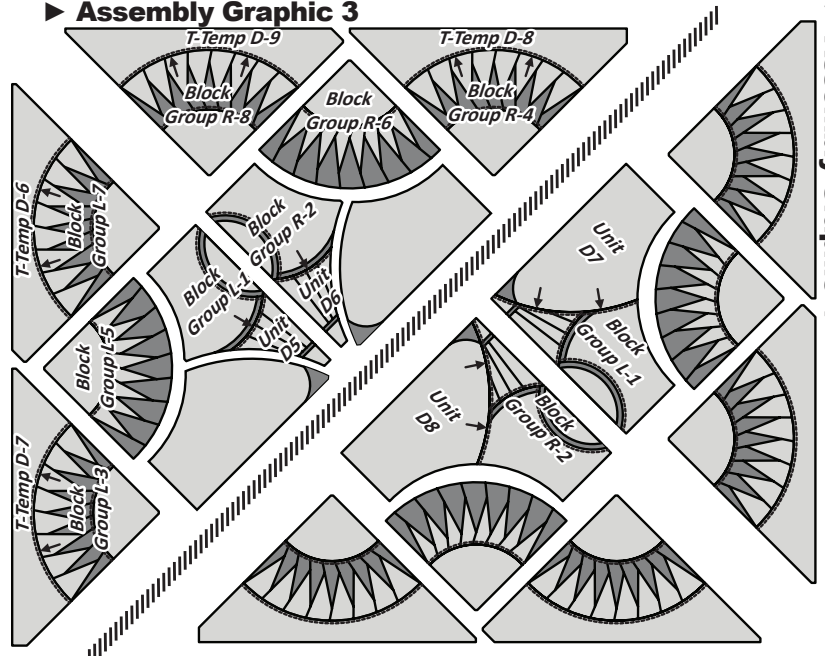
**Assembly Graphic 7:** Join the following pieces, left to right. Press seams toward the right.

- Left Group: Block Group L-3 to L-1.
- Right Group: Block Group R-4 to R-2

**Assembly Graphic 8:** Join the following pieces, left to right. Press seams toward the right.

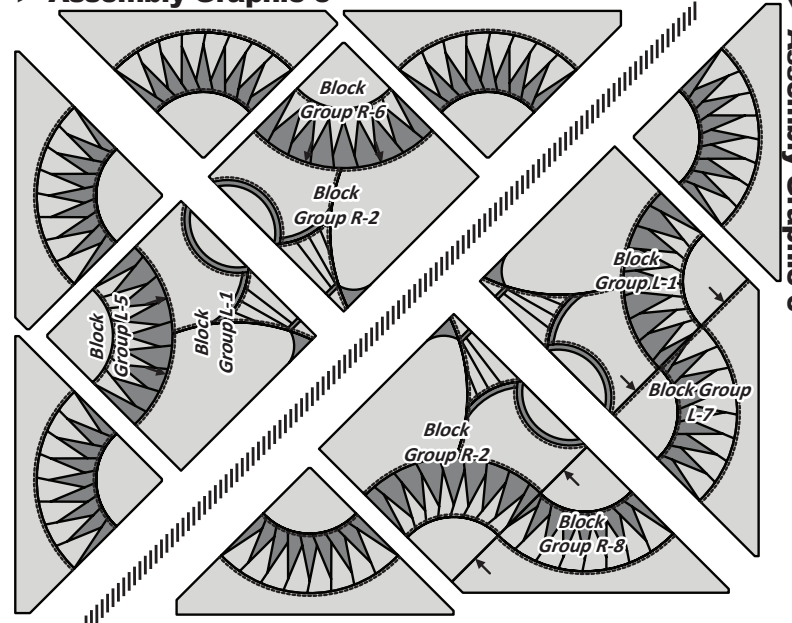
- Block Group L-1 to R-2.

▶ **Assembly Graphic 3**



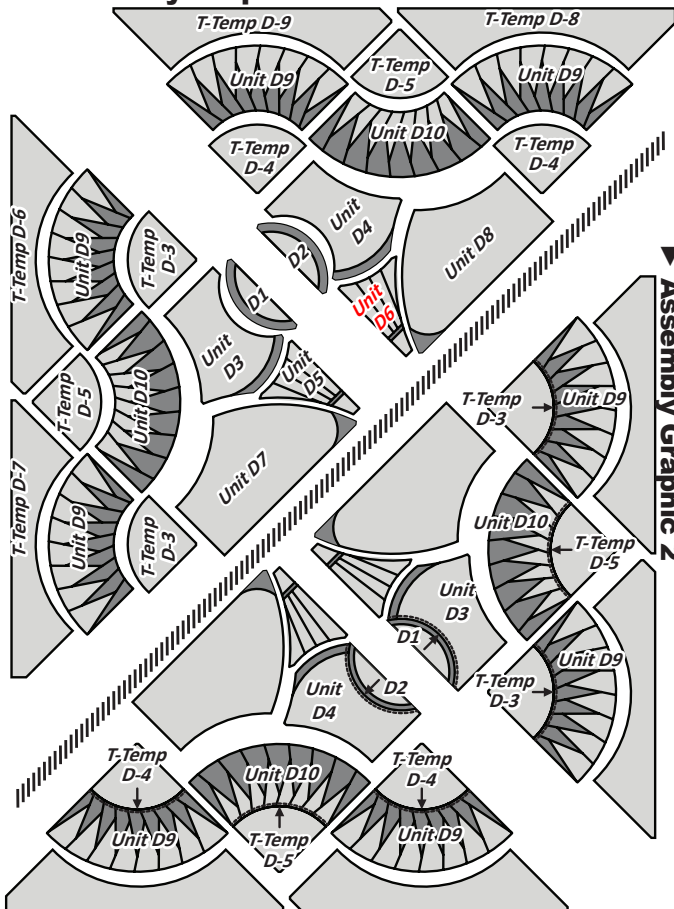
▶ **Assembly Graphic 4**

▶ **Assembly Graphic 5**



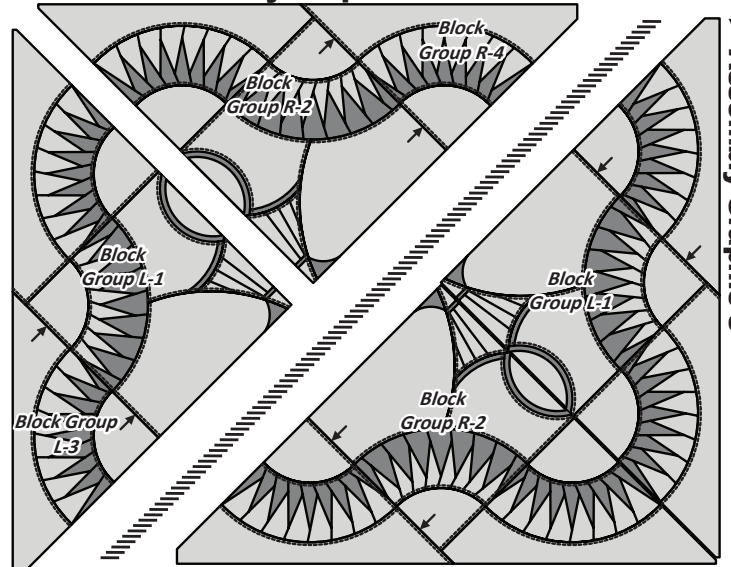
▶ **Assembly Graphic 6**

▶ **Assembly Graphic 1**



▶ **Assembly Graphic 2**

▶ **Assembly Graphic 7**



▶ **Assembly Graphic 8**