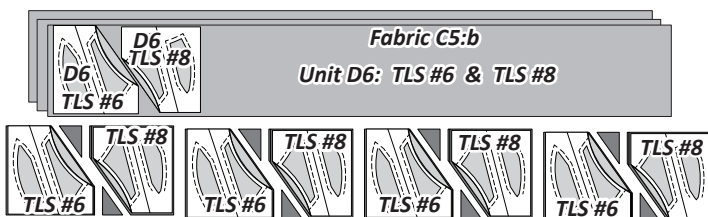
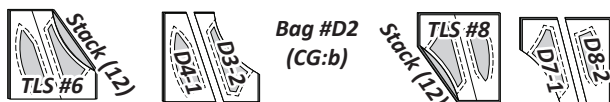


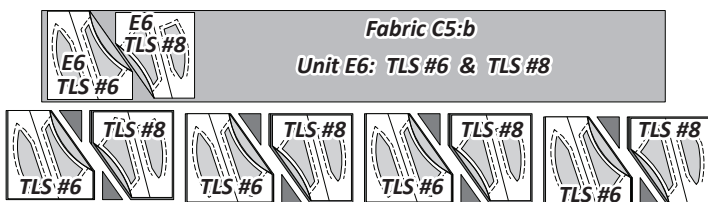
**Step 2:** Stack (3) 6" by 42" strips, *Fabric C5:b* facing *right-side-up*. One each *Unit D6-3 & D6-4 TLS #6* and *Unit D6-7 & D6-8 TLS #8* are used to cut (12) fabric pieces matching the size and shapes of each TLS. Reposition the templates for each additional cut.



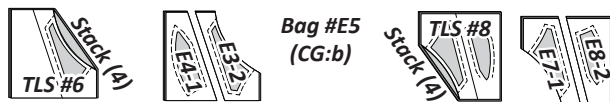
**Step 3:** Stack (12) fabric pieces beneath each TLS. Cut on Line 1 to separate the individual template pieces. Place (12) each of the *Unit D6, Sec Temps* into *Bag #D2: (CG:b)*.



**Step 4:** Place (1) 6" by 42" strip, *Fabric C5:b* facing *right-side-up*. One each *Unit E6-3 & E6-4 TLS #6* and *Unit E6-7 & E6-8 TLS #8* are used to cut (4) pieces matching the size and shapes of each TLS. Reposition the templates for each additional cut.



**Step 5:** Stack the (4) fabric pieces beneath each TLS. Cut on Line 1 to separate the individual template pieces. Place, (4) each of the *Unit E6, Sec Temps* into *Bag #E5: (CG:b)*.



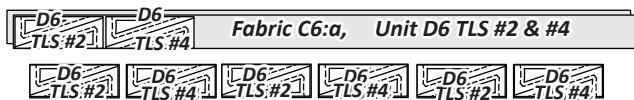
► **Fabric C6:a: Unit D6 & E6 TLS #2 & #4**

- *Unit D6-4, (TLS #2) Unit D6-8, (TLS #4)*
- *Unit E6-4, (TLS #2) Unit E6-8, (TLS #4)*

*NOTE - Quiltster:* If you precut your fabric strips using the Quiltster APP, you need to sub-cut Fabric C6:a, into the (4) 2-1/4" by 42" strips, as listed in Step 1.

**Step 1:** Cut (4) 2-1/4" by 42" strips, *Fabric C6:a*. Place (2) strips with the *Unit D6 TLS's* listed above. Place (2) strips with the *Unit E6 TLS's* listed above.

**Step 2:** Stack (2) 2-1/4" by 42" strips facing *right-side-up*. One each *Unit D6-4 TLS #2* and *Unit D6-8 TLS #4* are used to cut (6) fabric pieces matching the size of each TLS. Reposition the TLS for each additional cut.

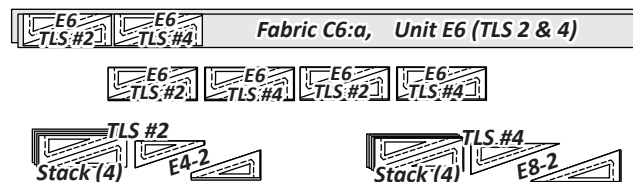


**Step 3:** Stack (6) fabric pieces beneath each TLS. Cut on Line 1



to separate the individual template pieces. Place (12) each of *Sec Temp D4-2* and *Sec Temp D8-2* into *Bag #D1: (CG:a)*.

**Step 4:** Position (2) 2-1/4" by 42" strip facing *right-side-up*. One each *Unit E6-4 TLS #2* and *Unit E6-8 TLS #4* are used to cut (4) pieces matching the size of each TLS. Reposition the templates for each additional cut.



**Step 5:** Stack (4) fabric pieces beneath each TLS. Cut Line 1 to separate the individual template pieces. Place (8) each of *Sec Temp E4-2* and *Sec Temp E8-2* into *Bag #E4: (CG:a)*.

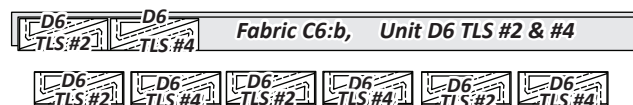
► **Fabric C6:b: Unit D6 & E6 TLS #2 & #4**

- *Unit D6-4, (TLS #2) Unit D6-8, (TLS #4)*
- *Unit E6-4, (TLS #2) Unit E6-8, (TLS #4)*

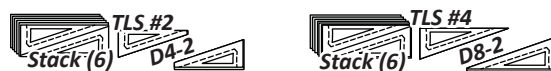
*NOTE - Quiltster:* If you precut your fabric strips using the Quiltster APP, you need to sub-cut Fabric C6:b, into the (3) 2-1/4" by 42" strips, listed in Step 1.

**Step 1:** Cut (3) 2-1/4" by 42" strips, *Fabric C6:b*. Place (2) strips with the *Unit D6 TLS's* listed above. Place (1) strip with the *Unit E6 TLS's* listed above.

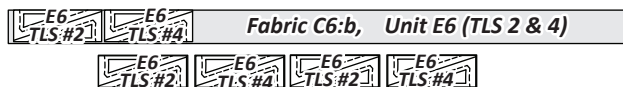
**Step 2:** Stack (2) 2-1/4" by 42" strips facing *right-side-up*. One each *Unit D6-4 TLS #2* and *Unit D6-8 TLS #4* are used to cut (6) fabric pieces matching the size of each TLS. Reposition the TLS for each additional cut.



**Step 3:** Stack (6) fabric pieces beneath each TLS. Cut on Line 1 to separate the individual template pieces. Place (12) each of *Sec Temp D4-2* and *Sec Temp D8-2* into *Bag #D2: (CG:b)*.



**Step 4:** Position (1) 2-1/4" by 42" strip facing *right-side-up*. One each *Unit E6-4 TLS #2* and *Unit E6-8 TLS #4* are used to cut (2) pieces matching the size of each TLS. Reposition the TLS for each additional cut.



**Step 5:** Stack (2) fabric pieces beneath each TLS. Cut on Line 1 to separate the individual template pieces. Place (4) each of *Sec Temp E4-2* and *Sec Temp E8-2* into *Bag #E5: (CG:b)*.

