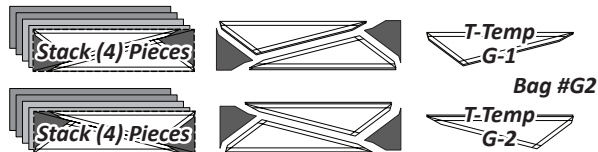


Step 3: Stack the (4) pieces beneath each (T-TLS). Repositionable glue will keep the templates from moving during the cutting process. Cut (8) pieces for each individual template. Place in Bag #G2.

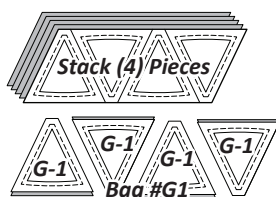


► **Fabric G2, (TLS) #2**

Step 1: Cut (2) 5-1/4" by 42" strips from *Fabric G2*. Stack the strips facing *right-side-up*. Position *Units G1 & G2 (TLS) #3* on the stacked strips. Cut (4) pieces the size and shape of the (TLS), repositioning the (TLS) as necessary.



Step 2: Stack the (4) fabric pieces beneath the (TLS). Clip the paper templates to the fabric beneath. The cutting is completed by cutting on each Cut Line to separate the template pieces. Place the templates in Bag #G1.

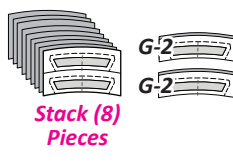


► **Fabric G3, (TLS) #4**

Step 1: Cut (1) 3-1/2" by 42" strip from *Fabric G3* and place *right-side-up*. Position *Units G1 & G2 (TLS) #4* on the strip. Cut (8) pieces the size and shape of the (TLS), repositioning the (TLS) as necessary.



Step 2: Stack the (8) fabric pieces beneath the (TLS). Clip the paper templates to the fabric beneath. The cutting is completed by cutting on each Cut Line to separate the template pieces.



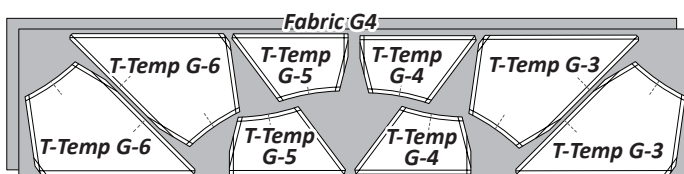
Step 3: Mark and sew the (TRP) lines on each fabric piece. (For more information on marking and sewing (TRP) lines, refer to Page 5) Place the templates in Bag #G1.



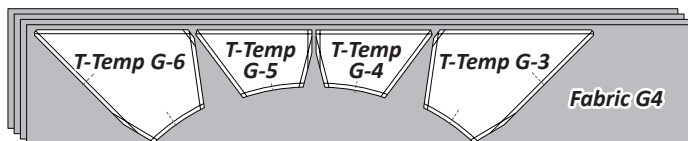
► **Fabric G4, T-Temps G-3, G-4, G-5 & G-6**

NOTE - Directional Fabric: If you are using a fabric that is directional, use the *Alternative Cutting* instructions for Step 1 instead.

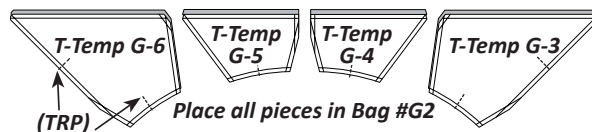
Step 1: (Standard Cutting, this is the option the cover quilt uses) Cut and stack (2) 9-1/2" by 42" strips from *Fabric G4* facing *right-side-up*. Position *T-Temp G-3 to G-6* on the stacked strips. Cut (4) pieces the size and shape of each T-Temp, repositioning them as necessary. Repositionable glue will keep the templates from moving during the cutting process.



Step 1: (Alternative Cutting, use only if you are cutting directional fabrics) Cut and stack (4) 7-1/2" by 42" strips from *Fabric G4* facing *right-side-up*. Position *T-Temp G-3 to G-6* on the stacked strips. Cut (4) pieces the size and shape of each T-Temp, repositioning them as necessary. Repositionable glue will keep the templates from moving during the cutting process.

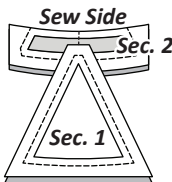


Step 2: Mark and sew the (TRP) lines on each fabric piece. (For more information on marking and sewing (TRP) lines, refer to the Introduction Booklet.) Clip the T-Template to the top of each stack of fabric pieces. Place the T-Templates and all the fabrics beneath into Bag #G2.



STACKING: UNITS G1 & G2, BAG #G1

Stacking: Position the templates and fabric pieces for both *Units G1 and G2* in numerical order facing *right-side up*, with the *sew-sides* aligned at the top. *Sec. 1* does not have a sew side. The stacking process begins with *Sec. 2* on the bottom and *Sec. 1* on top.

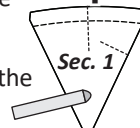


FOUNDATION CURVED PIECING: UNIT G1 & G2

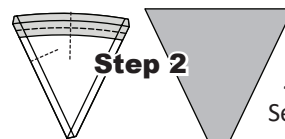
The paper piecing instructions are written using the graphics for Unit G1.

Step 1

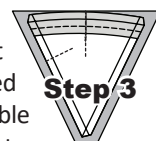
Step 1: Trace the dashed Basting Stitch Line onto the *backside* of each Foundation Sheet G1 and G2.



Step 2: Position the first piece of fabric for *Sec. 1, Temp G-1 wrong-side-up* on your table as shown. Find *Sec. 1* on the foundation paper and place a small amount of repositionable glue on the *backside* of the paper under *Sec. 1*.



Step 3: With the paper *printed-side-up*, slide the fabric under the Foundation Sheet and center it under *Sec. 1*. The *wrong-side* of the fabric is adhered to the *backside* of the paper with the repositionable glue. Repeat Steps 2 and 3 on each Foundation Sheet.



Step 4: Take the papers and fabric to your machine, set your stitch length at 2.0, then sew on the dashed line labeled Basting Stitch Line 1. After the basting stitch is sewn, sew the TRP Lines. Trim the loose thread ends on the Basting Stitch Line and TRP Lines on both the front and backside of each Foundation Sheet.

