

**Cutting Instructions:** Each graphic includes the Strip sizes, Template names, # of pieces to cut, and Bag #s.

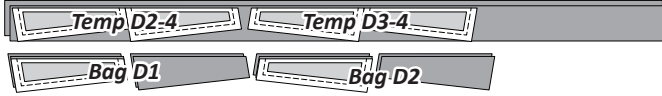
► **Fabric D2: Temp D2-6 & D3-6**

**Step 1:** Cut (2) 1-1/2" by 42" strips. Cut (4) pieces per Sec Temp.



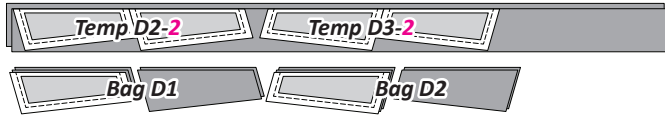
► **Fabric D3: Temp D2-4 & D3-4**

**Step 1:** Cut (2) 2-1/4" by 42" strips. Cut (4) pieces per Sec. Temp.



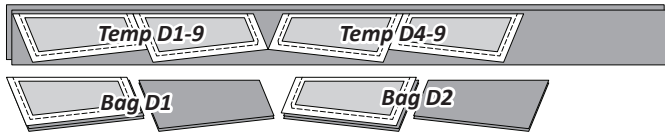
► **Fabric D4: Temp D2-2 & D3-2**

**Step 1:** Cut (2) 2-3/4" by 42" strips. Cut (4) pieces per Sec. Temp.



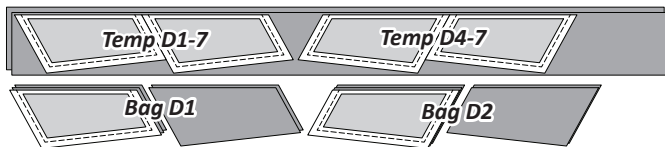
► **Fabric D5: Temp D1-9 & D4-9**

**Step 1:** Cut (2) 3-1/2" by 42" strips. Cut (4) pieces per Sec. Temp.



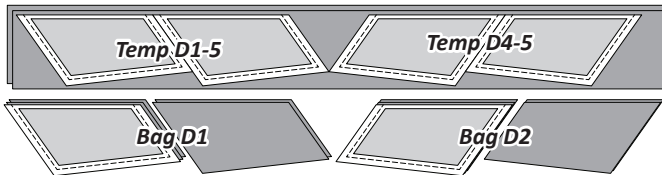
► **Fabric D6: Temp D1-7 & D4-7**

**Step 1:** Cut (2) 4" by 42" strips. Cut (4) pieces per Sec. Temp.



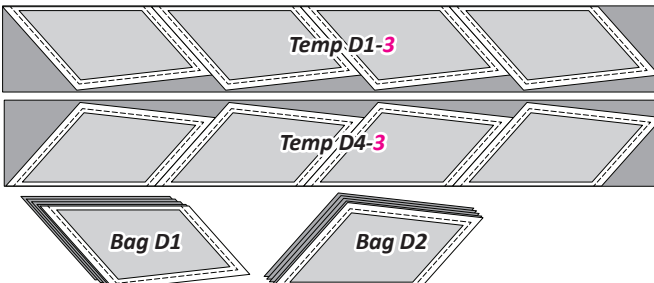
► **Fabric D7: Temp D1-5 & D4-5**

**Step 1:** Cut (2) 5" by 42" strips. Cut (4) pieces per Sec. Temp.



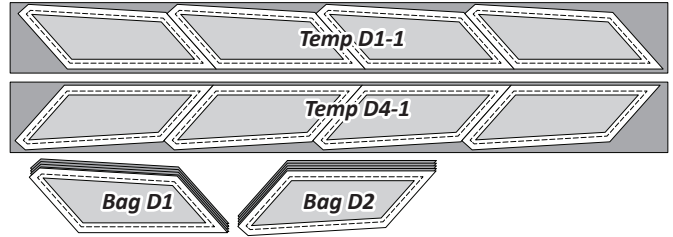
► **Fabric D8: Temp D1-3 & D4-3**

**Step 1:** Cut (2) 5-1/2" by 42" strips. Cut (4) pieces per Sec. Temp.



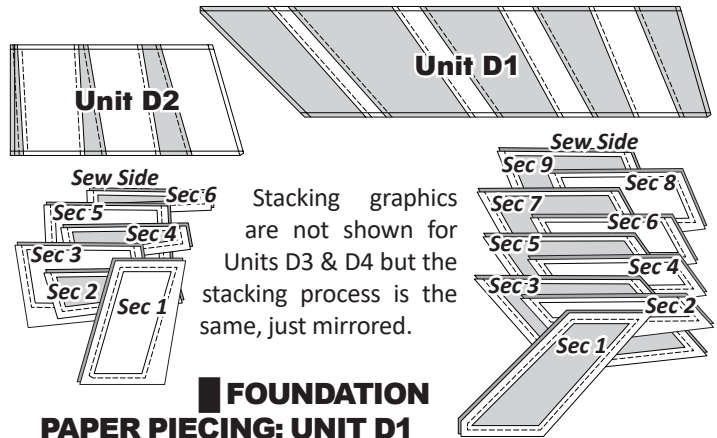
► **Fabric D9: Temp D1-1 & D4-1**

**Step 1:** Cut (2) 4-1/2" by 42" strips. Cut (4) pieces per Sec. Temp.



■ **STACKING THE FABRICS AND PREPARING THE PAPERS**

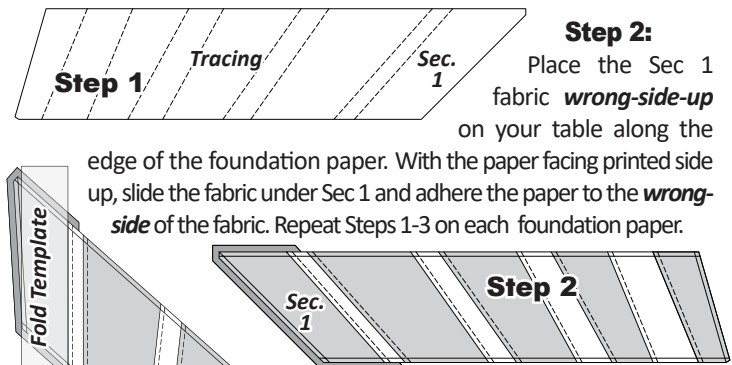
Position the templates and fabric pieces for Unit D1 & D2 in the order shown. The individual section groups are stacked facing **right-side up**, with the **sew-sides** aligned at the top. *Sec. 1* does not have a sew side. The stacking order starts with the largest Sec # on the bottom ending with Sec 1 on the top.



Stacking graphics are not shown for Units D3 & D4 but the stacking process is the same, just mirrored.

■ **FOUNDATION PAPER PIECING: UNIT D1**

**Step 1:** Trace the dashed lines onto the backside of each Foundation Sheet. Adhere a small amount of fabric glue on the backside of the paper under Sec. 1.



**Step 3:** Place the fold template over the top of Sec. 1, lining the edge up on the solid line labeled Line 1.

**Step 4: A):** Fold the paper back over the top of the fold template. B): Place the **Add-A-Quarter** ruler next to the folded back paper lip-side down and trim a quarter-inch seam allowance. [Graphics shown on next page]

**Step 5: A):** Position Fabric #2, **right-side-up** on your table along the edge of the foundation paper. B): Lift the foundation paper,