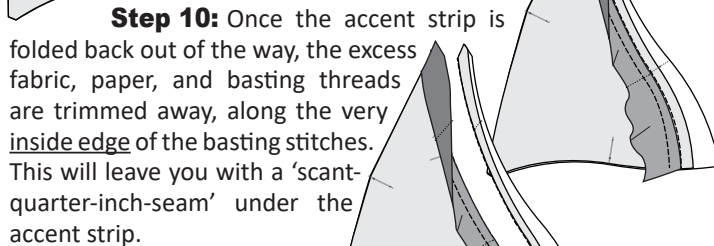


Trimming Under the Vein: The fabric, paper and basting stitches hidden under the accent strip needs to be trimmed out from underneath the Sec. 2, accent strip. To remove the excess, fabric and paper, position the paper down against the cutting table. The accent strip is temporarily folded back to gain access to the fabric and paper underneath the accent strip.



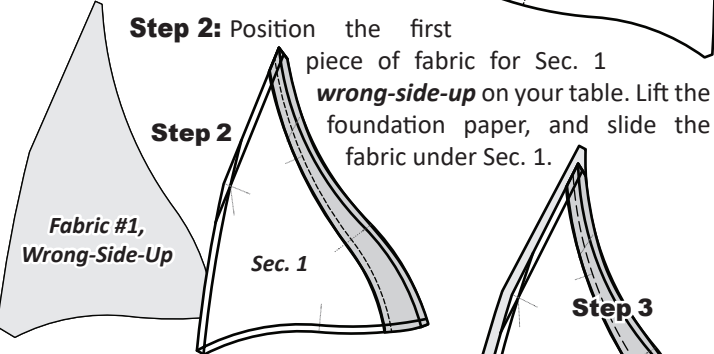
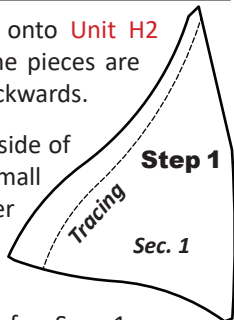
Step 10: Once the accent strip is folded back out of the way, the excess fabric, paper, and basting threads are trimmed away, along the very inside edge of the basting stitches. This will leave you with a 'scant-quarter-inch-seam' under the accent strip.

Step 11: Repress the accent strip facing out and place the pieces back in Bag #H1.

CURVED PIECING, UNIT H2, S-CURVE

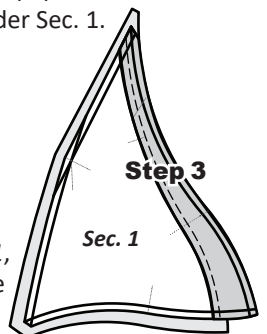
The process for sewing the accent strips onto Unit H2 are the same steps as with Unit H1 but the pieces are mirrored, which makes everything seem backwards.

Step 1: Trace the basting line on the backside of the foundation paper, then place a small amount of fabric glue on the **backside** under Sec. 1.



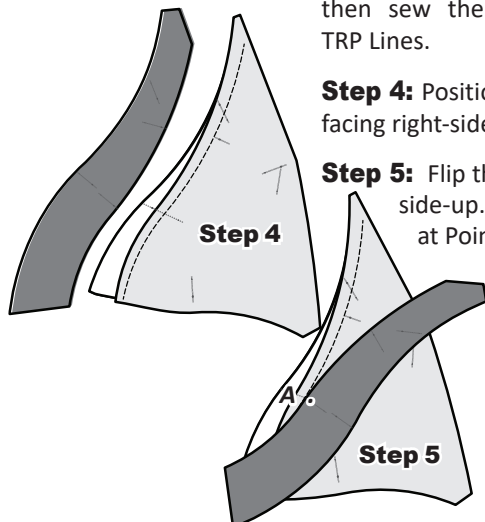
Step 2: Position the first piece of fabric for Sec. 1 **wrong-side-up** on your table. Lift the foundation paper, and slide the fabric under Sec. 1.

Step 3: Sew on *Basting Stitch Line 1*, then sew the TRP Lines.

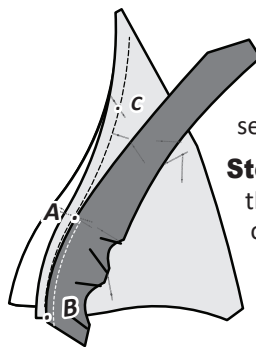


Step 4: Position Sec. Temp H2-2 facing right-side-up next to Unit H2.

Step 5: Flip the vein over, wrong-side-up. Match the TRP Lines, at Point A and glue the raw edges along the basting line between points A and B.

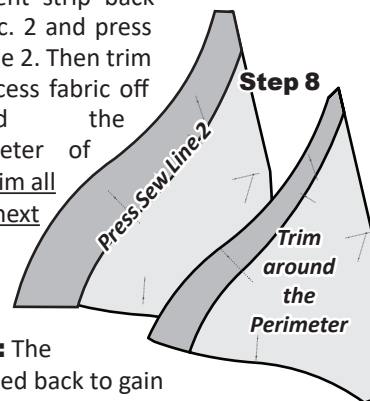


Step 6: Sew the first half of Line 1, starting at Point A.



Step 7: Finish gluing the raw edges between points C & A, then complete the sewing for the second half of your seam. The sewing will begin at Point A.

Step 8: After the seam is completed, fold the accent strip back over Sec. 2 and press. Sew Line 2. Then trim the excess fabric off around the perimeter of the Unit H2 paper. You must trim all sides before completing the next step!!!!



Trimming Under the Vein: The accent strip is temporarily folded back to gain access to the fabric and paper underneath Sec 2. Once the accent strip is folded back the excess fabric is trimmed away leaving a scant 1/4" seam. Repress the accent strip in the opposite direction if you would like, to create opposing seems during final assembly, and place the pieces back in Bag #H2.

