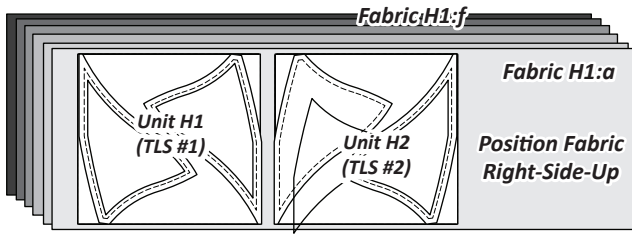


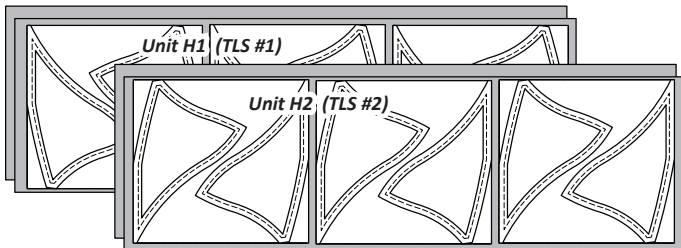
- **Six Color Groups:** Cut (6) 13" by 42" strips, (1) from each color, Fabric H1:a to H1:f.



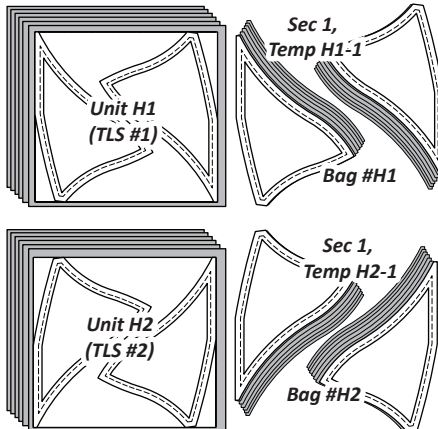
NOTE - Multiple Color Groups: If you have chosen to use (2) or more fabrics you will need to manually calculate the yardage you need using the previous diagrams instead of using the Table on the previous page.

Step 1: Stack the 13" by 42" strips facing **right-side-up** into two equal stacks. If using multiple colors stack the strips in reverse alphabetical order ending with Fabric H1:a on the top.

Step 2: **Unit H1 (TLS #1)** and **Unit H2 (TLS #2)** are used to cut (6) pieces matching the size of each (TLS).



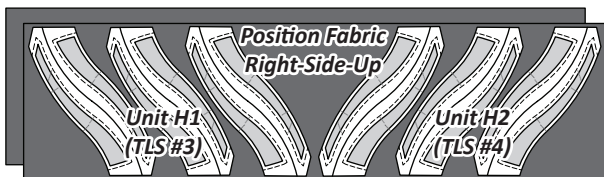
Step 3: The six fabric pieces are stacked beneath each (TLS) in reverse alphabetical order. To complete the cutting for the (12) pieces, trim the excess fabric and paper away, around the perimeter of each Template H1-1 and H1-2. Place the pieces with the correct foundation papers for **Unit H1**, in Bag #H1 and **Unit H2**, in Bag #H2.



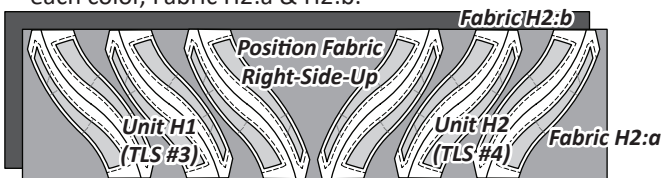
► **Fabric H2: (TLS #3 & #4)**

Cutting Strips: Two 11-1/4" by 42" strips are needed to complete the cutting for **Units H1 & H2 (TLS) #3 & #4**.

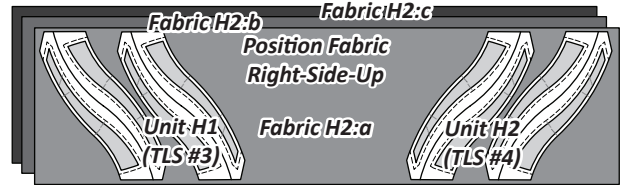
- **One Color Groups:** Cut (2) 11-1/4" by 42" strips from Fabric H2.



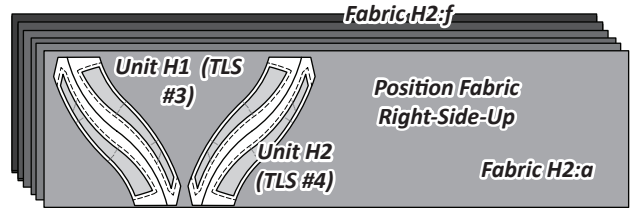
- **Two Color Groups:** Cut (2) 11-1/4" by 42" strips, (1) from each color, Fabric H2:a & H2:b.



- **Three Color Groups:** Cut (3) 11-1/4" by 42" strips, (1) from each color, Fabric H2:a to H2:c.

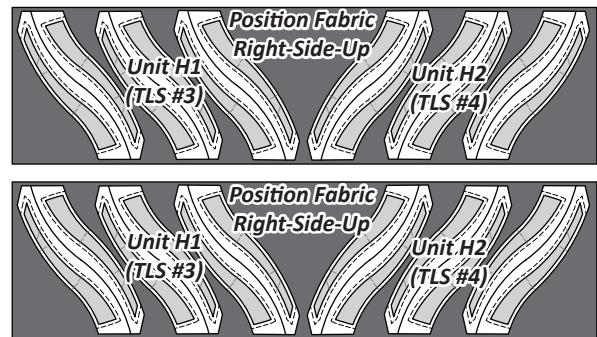


- **Six Color Groups:** Cut (6) 11-1/4" by 42" strips, (1) from each color, Fabric H2:a to H2:f.

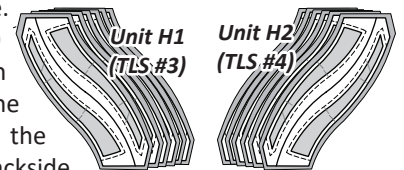


NOTE - Multiple Color Groups: If you have chosen to use (2) or more fabrics you will need to manually calculate the yardage you need using the previous diagrams instead of using the Table on the previous page.

Step 4: Position the fabric facing **right-side-up**. A small amount of repositionable fabric glue is placed on the backside of each **Unit H1, (TLS) #3 and Unit H2 (TLS) #4**. The backside of each layout sheet is then placed against the **right-side** of the fabric.



Step 5: Cut around each layout sheet leaving about 3/8" of excess fabric along each edge. Set your stitch length at 2.0 and sew the (TRP) Lines on each layout sheet. After the (TRP) lines are sewn, trim the threads on the front and backside of each template.



Step 6: Trim the excess fabric off around the perimeter of each layout sheet, then continue cutting the templates apart on Cut Line 1 to complete the cutting for the (12) templates. Place the **Sec. 2 Temp H1-2** in Bag #H1, and the **Sec. 2 Temp H2-2** in Bag #H2.

