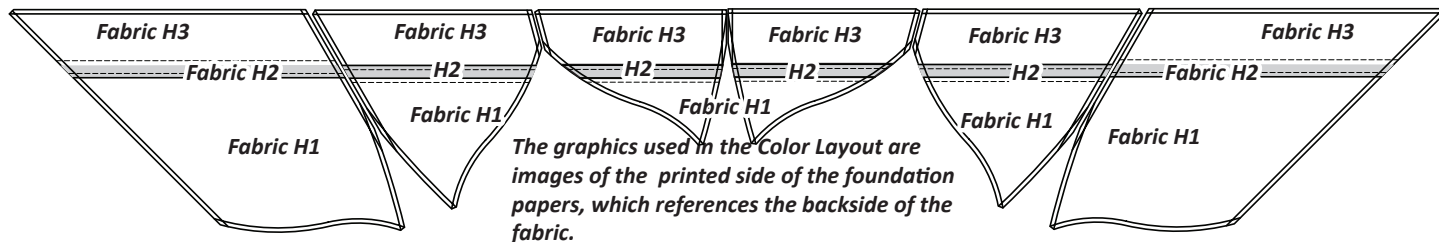


► Group H: Wall Border Fabric Layout



UNITS H1-H6: CUTTING INSTRUCTIONS

Yardage Chart Information: The yardage information presented in the Fabric Chart is for One Color Group, where all (4) border groups look the same.

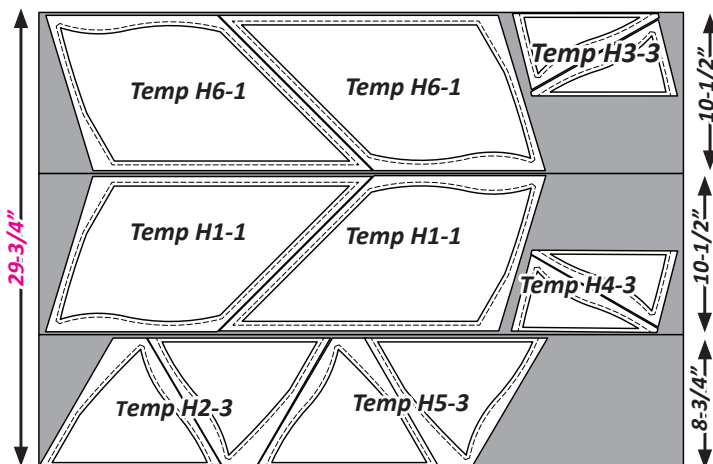
NOTE - Fabric Swatches: It is very helpful to paste a small swatch of fabric onto the foundation papers and their respective templates prior to cutting your fabric. This really helps keep you organized as you complete the cutting and sorting of your precut template pieces for each of the units.

Group H: Wall Border: Unit H1-H6,		
FABRIC # REFERENCE	FABRIC GROUP H	REQUIRED INCHES
<u>Fabric H1</u> Units H1-H6: Temp H1-1, H2-3, H3-3, H4-3, H5-3, H6-1,	<u>H1</u> <u>Fabric Swatch</u>	1-3/4 yds or (59-1/2")
<u>Fabric H2</u> Units H1-H6: Temp H1-2, H2-2, H3-2, H4-2, H5-2, H6-2,	<u>H2</u> <u>Fabric Swatch</u>	1/2 yd or (16")
<u>Fabric H3</u> Units H1-H6: Temp H1-3, H2-1, H3-1, H4-1, H5-1, H6-3	<u>H3</u> <u>Fabric Swatch</u>	1-1/2 yds or (54")

► Fabric H1: Templates H1-1, H2-3, H3-3, H4-3, H5-3, & H6-1

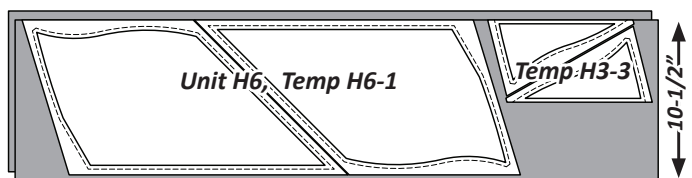
NOTE - Quiltster App Information: If your strips were cut using the Quiltster App, you will need to subcut each 29-3/4" strip into (2) 10-1/2" strips and (1) 8-3/4" strip before continuing with your cutting instructions.

Cutting Strips: Two 29-3/4" by 42" strips are needed to complete the cutting for **Templates H1-1, H6-1, H2-3, H5-3, H3-3** and **H4-3** from Fabric H1.



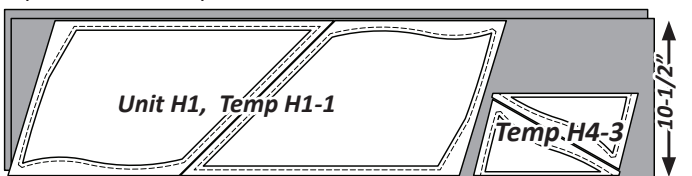
Step 1: Stack the 29-3/4" by 42" strips facing **right-side-up**. Subcut (2) 10-1/2" by 42" strips, and (1) 8-3/4" by 42" strip from each strip.

Step 2: Stack (2) 10-1/2" strips facing **right-side-up**. **Unit H6, Temp H6-1** is placed along the left edge of the strip, cut (4) pieces. Reposition the templates as needed for each cut. **Unit H3, Temp H3-3** is placed along the right edge of the strip, cut (4) pieces. Reposition the templates as needed.



Step 3: Place the **H6-1 Templates** in Bag #H1 with **Unit H6** and the **H3-3 Templates** in Bag #H3 with **Unit H3**.

Step 4: Stack the other (2) 10-1/2" strips facing **right-side-up**. **Unit H1, Temp H1-1** is placed along the left edge of the strip, cut (4) pieces. Reposition the templates as needed for each cut. **Unit H4, Temp H4-3** is placed along the right edge of the strip, cut (4) pieces. Reposition the templates as needed.



Step 5: Place the **Bag #H3** **H1-1 Templates** in Bag #H1 with **Unit H1** and the **H4-3 Templates** in Bag #H3 with **Unit H4**.

Step 6: Stack both 8-3/4" strips facing **right-side-up**. **Unit H2, Temp H2-3** is used to cut (4) pieces and **Unit H5, Temp H5-3** is used to cut (4) pieces. Reposition the templates as needed for each cut.

