

► Fabric C4: Unit C2 (TLS #4)

Cutting Strips: Six 4-1/2" by 42" strips are needed to complete the cutting for (12) fabric pieces using **Unit C2 (TLS) #4**. Choose your Color Group, then proceed to cut the required # of strips from each color.

- **One Color Group:** Cut (6) 4-1/2" by 42" strips from Fabric C4.
- **Two Color Group:** Cut (3) 4-1/2" by 42" strips from each color Fabric C4:a and C4:b.
- **Three Color Group:** Cut (2) 4-1/2" by 42" strips from each color Fabric C4:a to C4:c.
- **Six Color Group:** Cut (1) 4-1/2" by 42" strips from each color Fabric C4:a to C4:f.

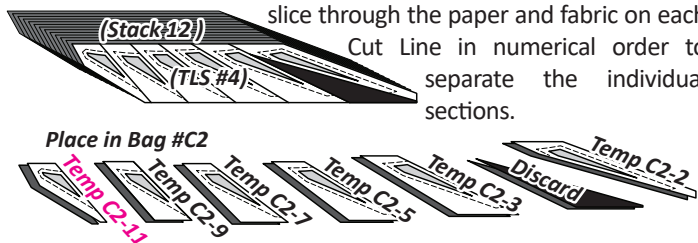
- **Twelve Color Groups:** Reference the Rainbow cutting option in the introduction booklet.

Step 1: Stack the 4-1/2" by 42" strips facing **right-side-up**. If you have chosen to use two or more colors, stack the strips in reverse alphabetical order starting with the latest alphabetical fabric on the bottom and ending with *Fabric C4:a* on top.

Step 2: Position **Unit C2, Template Layout Sheet #4** onto the fabric strips starting at the left edge. Cut (6) pieces matching the size and shape of the (TLS). Then rotate the (TLS) to cut (6) more pieces matching the size and shape of the (TLS). You should have a total of (12) pieces.



Step 3: If you are working with multiple colors you will need to stack the pieces in reverse alphabetical order under the (TLS) and slice through the paper and fabric on each Cut Line in numerical order to separate the individual sections.

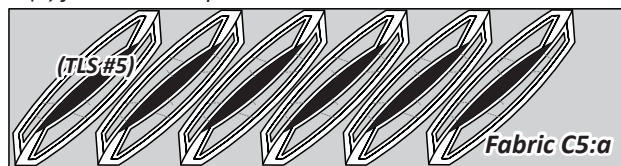


Step 4: Clip each template to the fabric pieces beneath. Place these stacks with the foundation papers in Bag #C2.

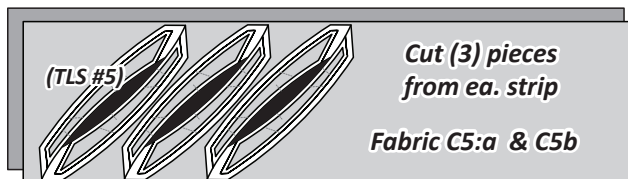
► Fabric C5: Unit C1 (TLS #5)

Cutting Strips: One 11" by 42" strip is needed to complete the cutting for **Unit C1 (TLS) #5** from *Fabric C5*. (If you have selected more than (2) fabrics for *Fabric C5* you will need one additional strip from each additional color.)

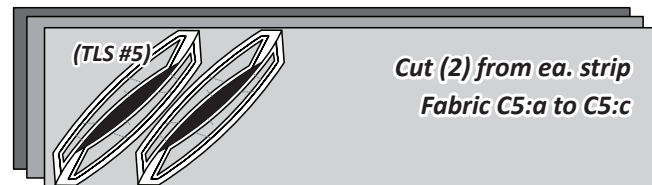
- **One Color Group:** Cut (1) 11" by 42" strip from *Fabric C5*. Cut (6) from each strips.



- **Two Color Groups:** Cut (1) 11" by 42" strip from ea. *Fabric C5:a* and *C5:b*.



- **Three Color Groups:** Cut (1) 11" by 42" strip from ea. *Fabric C5:a* to *C5:c*.



- **Six and Twelve Color Groups:** Reference the Rainbow cutting option in the introduction booklet to minimize fabric waste. Realize that if you aren't able to find another color to share this cut with, you may end up getting a half yard of fabric for each fabric you choose.

Step 1: Place the fabric strip(s) facing right-side-up. Position (6) of **Unit C1 Template Layout Sheet #5** onto the fabric strips. The backside of each layout sheet is placed against the right-side of the fabric and secured with repositionable glue. If you chose more than one color group, refer to the previous diagrams for how many (TLS) to place on each strip.

Step 2: Cut around each layout sheet leaving about 1/8" of excess fabric along each edge.



Step 3: Set your stitch length at 2.0 and sew the (TRP) Lines on each layout sheet. After the (TRP) lines are sewn, trim the threads on the front and backside of each layout sheet. (The TRP lines are needed when curved piecing, so don't skip this step.) After the (TRP) lines are sewn, trim the excess fabric off around the perimeter of each layout sheet. **Then trim fabric even with TLS.**

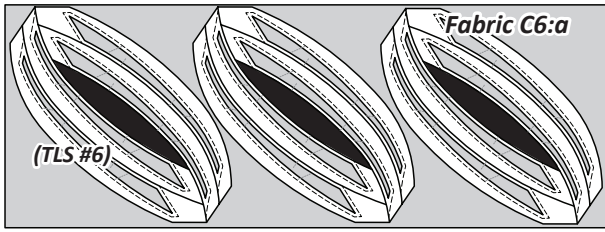
Step 4: Cut the individual template sections apart on Cut Lines 1 and 2. Discard the scrap in the middle of each pair of templates. (Note: Leave the template paper attached to each fabric piece until told to remove when assembling the units.)

Step 5: With multiple use of colors, stack fabrics in reverse alphabetical order, ending with *Fabric C5:a* on top. Clip the template/fabric pieces together and place into Bag #C1 with their assigned foundation units.

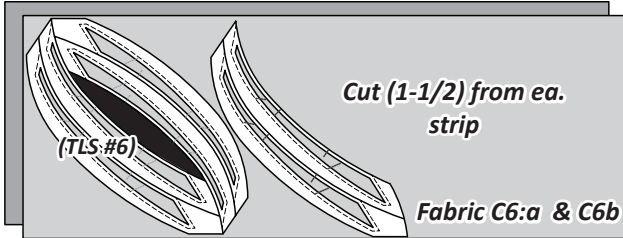
► Fabric C6: Unit C2 (TLS #6)

Cutting Strips: One 15-1/2" by 42" strip is needed to complete the cutting for **Unit C2 (TLS) #6** from *Fabric C6*. (If you have selected more than (2) fabrics for *Fabric C6* you will need one additional strip from each additional color.)

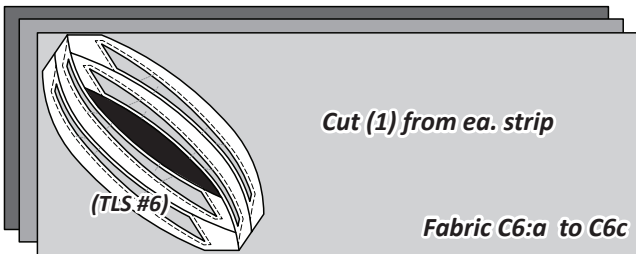
- **One Color Group:** Cut (1) 15-1/2" by 42" strip from *Fabric C6*. Cut (3) from each strip.



- **Two Color Groups:** Cut (1) 15-1/2" by 42" strip from ea. *Fabric C6:a* and *C6:b*.



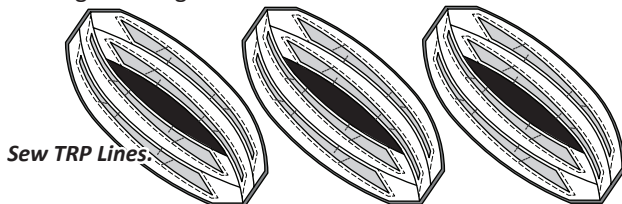
- **Three Color Groups:** Cut (1) 15-1/2" by 42" strip from ea. *Fabric C6:a* to *C6:c*.



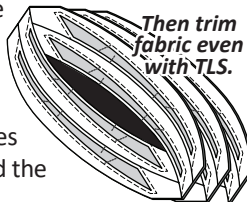
- **Six and Twelve Color Groups:** Reference the Rainbow cutting option in the introduction booklet to minimize fabric waste. Realize that if you aren't able to find another color to share this cut with, you may end up getting a half yard of fabric for each fabric you choose.

Step 1: Place the fabric strip(s) facing right-side-up. Position (6) of *Unit C2 Template Layout Sheet #6* onto the fabric strips. The backside of each layout sheet is placed against the right-side of the fabric and secured with repositionable glue. If you chose more than one color group, refer to the previous diagrams for each color group for how many (TLS) to place on each strip.

Step 2: Cut around each layout sheet leaving about 1/8" of excess fabric along each edge.



Step 3: Set your stitch length at 2.0 and sew the (TRP) Lines on each layout sheet. After the (TRP) lines are sewn, trim the threads on the front and backside of each layout sheet. (The TRP lines are needed when curved piecing, so don't skip this step.) After the (TRP) lines are sewn, trim the excess fabric off around the perimeter of each layout sheet.



Step 4: Cut the individual template sections apart on Cut Lines 1 and 2. Discard the scrap in the middle of each pair of templates. (Note: Leave the template paper attached to each fabric piece until told to remove when assembling the units.)

Step 5: If you have chosen to use more than one color group, stack the template numbers in reverse alphabetical order starting with the latest alphabetical fabric on the bottom, ending with *Fabric C6:a* on top. Clip the template/fabric pieces together and place into Bag #C2 with their assigned foundation units.

GROUP C: ALTERNATIVE 1 CUTTING INSTRUCTIONS

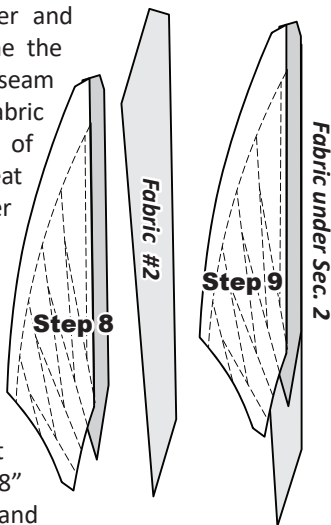
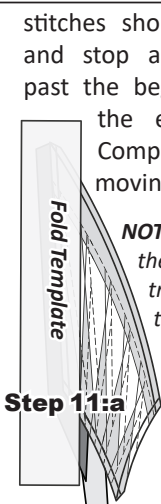
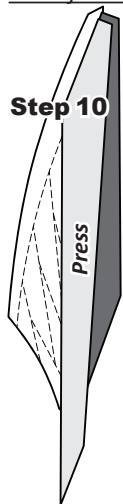
Fabric Chart: The yardages on the fabric chart are assigned to the spike sections on Unit C1 and C2. Fabric C3:a to C3:e are assigned to the spikes for Unit C1 (TLS) #3. Fabric C4:a, to C4:f are assigned to the spikes for Unit C2 (TLS) #4. A graphic showing how the fabric references are laid out on each unit is shown on the next page. Also, note that if you use this alternative and unlock the blocks in Quiltster, you will have to use the following to differentiate between the different color groups. As an example, a 2 Color group option would look as follows:, C3:a(1), C3:a(2), then C3:b(2), C3:b(2), etc.

<i>Units C1 & C2 Yardage: Make (12) Each</i>		
GROUP-C FABRIC #	YARDAGE INCH	ASSIGNED COLOR
<u>Fabric C3:a</u> Unit C1 (TLS #3, Temp C1-1)	3/8 yd or (7-1/2")	FABRIC SWATCH
<u>Fabric C3:b</u> Unit C1 (TLS #3, Temp C1-3)	1/4 yd or (6")	FABRIC SWATCH
<u>Fabric C3:c</u> Unit C1 (TLS #3, Temp C1-5)	1/4 yd or (6")	FABRIC SWATCH
<u>Fabric C3:d</u> Unit C1 (TLS #3, Temp C1-7)	1/4 yd or (6-3/4")	FABRIC SWATCH
<u>Fabric C3:e</u> Unit C1 (TLS #3, Temp C1-9)	1/8 yd or (4")	FABRIC SWATCH
<u>Fabric C4:a</u> Unit C2 (TLS #4, Temp C2-2)	3/8 yd or (10")	FABRIC SWATCH
<u>Fabric C4:b</u> Unit C2 (TLS #4, Temp C2-3)	1/4 yd or (6")	FABRIC SWATCH
<u>Fabric C4:c</u> Unit C2 (TLS #4, Temp C2-5)	1/4 yd or (6")	FABRIC SWATCH
<u>Fabric C4:d</u> Unit C2 (TLS #4, Temp C2-7)	1/4 yd or (6-3/4")	FABRIC SWATCH
<u>Fabric C4:e</u> Unit C2 (TLS #4, Temp C2-9)	1/8 yd or (4")	FABRIC SWATCH
<u>Fabric C4:f</u> Unit C2 (TLS #4, Temp C2-11)	1/8 yd or (4")	FABRIC SWATCH

Step 8: Lift the foundation paper and slide the fabric under Sec. 2. Line the sew-side up with the trimmed seam allowance. Make sure the fabric extends beyond the boundaries of the dashed lines for Sec. 2. Repeat **Steps 3-7** for each foundation paper before moving onto Step 8.

Step 9: Fold the paper back open and sew on Line 1. *Note: The sew lines are the solid lines printed on the foundation paper identified with a Line #.* The

stitches should start and stop about 1/8" past the beginning and the end of each sew line. Complete the sewing on each unit before moving onto the next step.

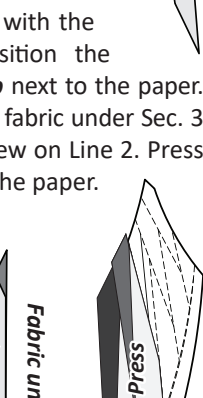
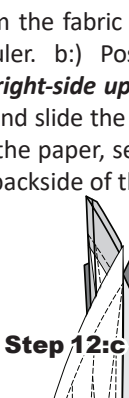
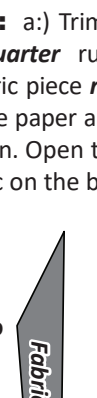
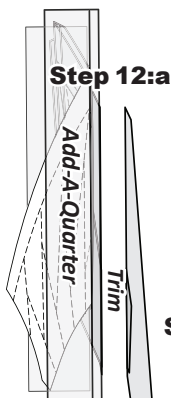


NOTE - Trimming the Threads: Sewing past the ends of your sew line makes it possible to trim the threads when completing the final trimming.

Step 10: Loosen the glue under Sec. 1, then press the fabric pieces open on the backside of each paper.

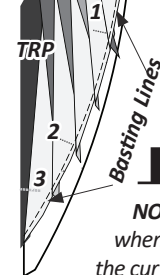
the edge up with Line 2. b:) Fold the paper back and tear the paper along the stitches on line 1. Stop tearing when you hit the fold template.

NOTE - Tearing the paper along the stitches allows the fabric to relax making it possible to place the Add-A-Quarter ruler along the folded edge.



Step 13: Continue adding the fabric pieces to each section, stopping once you complete Sec 10.

Step 14: When the paper piecing is completed, re-set your stitch length at 2.0. Sew Basting Line #10, along with the three (TRP) Lines shown here. After the (TRP) Lines are sewn, the threads are trimmed on the front and backside of each unit.



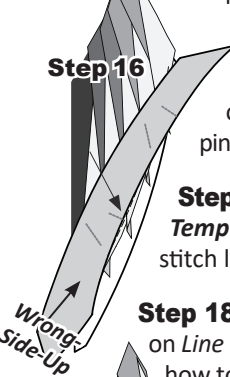
NOTE - Do not trim the foundation papers. The papers are not trimmed until after the curved paper piecing is completed.

CURVED PAPER PIECING

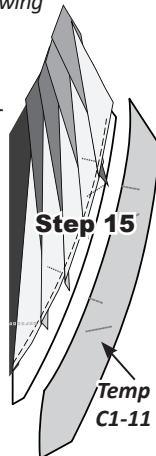
NOTE - Fabric Glue: Fabric glue is used to secure the raw edge when fitting the fabric pieces together before sewing the curved seams.

NOTE - Graphics created with Unit C1.

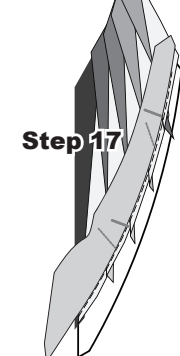
Step 15: Position Unit C1, fabric-side-up on your table. Then remove the paper from the fabric pieces cut with Temp C1-11.



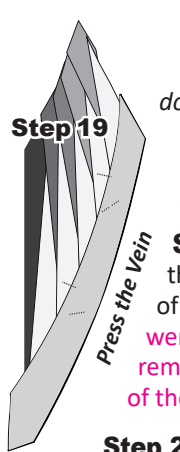
Step 16: Position Temp C1-11 facing wrong-side-up on top of Unit C1. Match and pin the TRP Lines at the center.



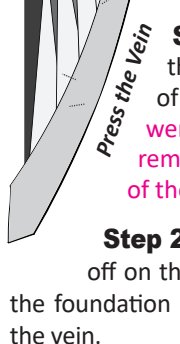
Step 17: Glue the raw edge of Temp C1-11 along the basting stitch line to secure the edges.



Step 18: The curved piecing is completed by sewing on Line 11. There are two sewing options available on how to complete the sewing on Line 11.



Option One: Sew directly on the sew line. Position the fabric with the paper facing up, fabric on the bottom. To avoid sewing puckers into the seam, lift the paper about 1/2" and hold it slightly above the surface of the machine as you sew on the stitch line. This allows the fabric to move freely as it passes over the feed dogs on your machine.



Option Two: Sew directly on the fabric. The paper is placed next to the feed dogs, fabric facing up. The edge of your quarter-inch presser foot is aligned with the basting stitch to achieve a 1/4" seam allowance.

Step 19: After the seam is sewn, the fabric is pressed on the backside of the paper to cover Sec 11. If they were not already added, add the remaining TRP Lines to the Vein section of the Unit.

Step 20: The excess fabric is then trimmed off on the solid line around the perimeter of the foundation paper, including the curved edge of the vein.