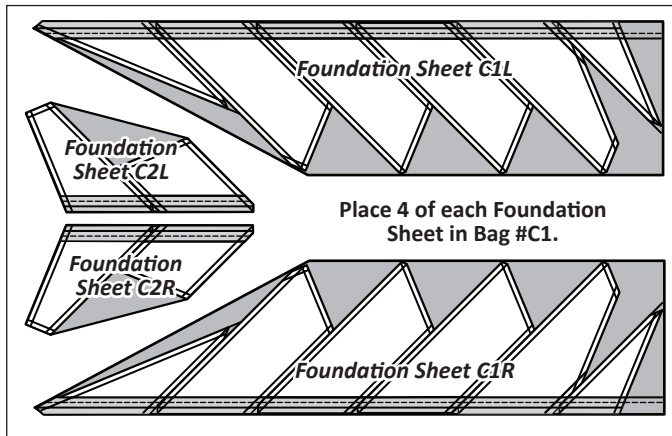


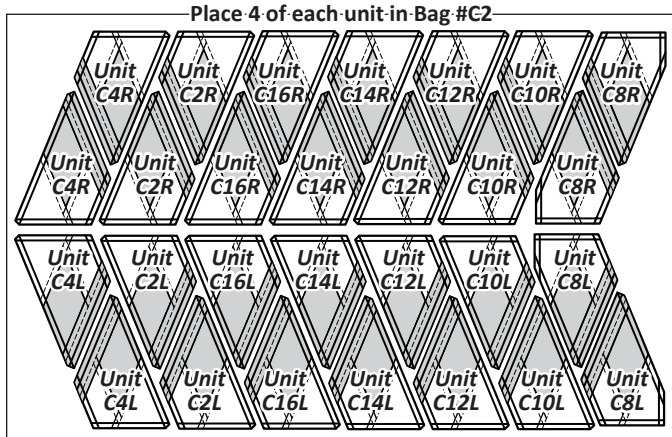
GROUP C: SET-IN DIAMOND BORDER INSTRUCTIONS

Ziploc Storage Bags: You will need (4) large bags to complete the organization for these instructions. (As an option, (14) small ziploc bags can be placed in bag #C2 and (6) small ziploc bags can be placed bag #C3 for individual units. This might help you keep your fabric straight.) Label large bags as follows to stay organized while cutting and piecing Foundation Units and Templates.

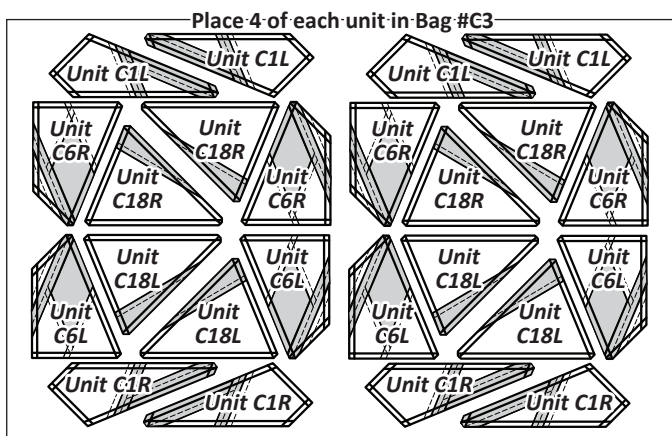
- Bag #C1: (4) ea. Foundation Sheets C1L, C1R, C2L & C2R
- Bag #C2: (4) ea. Units C2L/R, C4L/R, C8L/R, C10L/R, C12L/R, C14L/R & C16L/R Foundation Papers
- Bag #C3: (4) ea. Units C1L/R, C6L/R & C18L/R Foundation Papers
- Bag #C4: T-Templates C-1 & C-2



▼ (4) NP 897



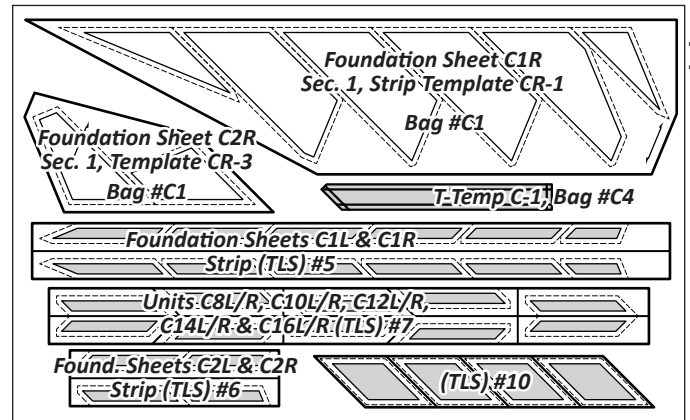
▼ (2) NP 898



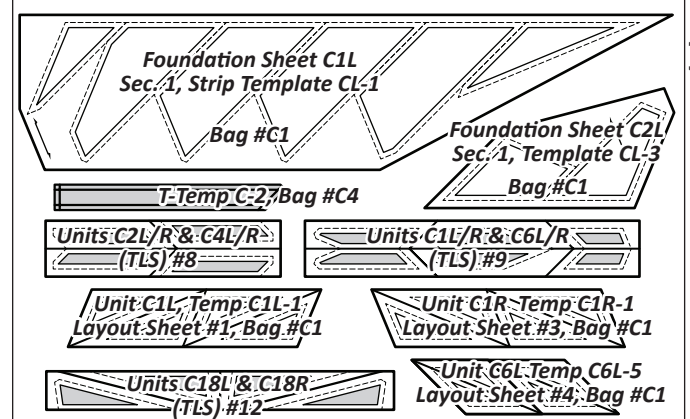
▼ (1) NP 899

PREPARING THE FOUNDATION PAPERS:

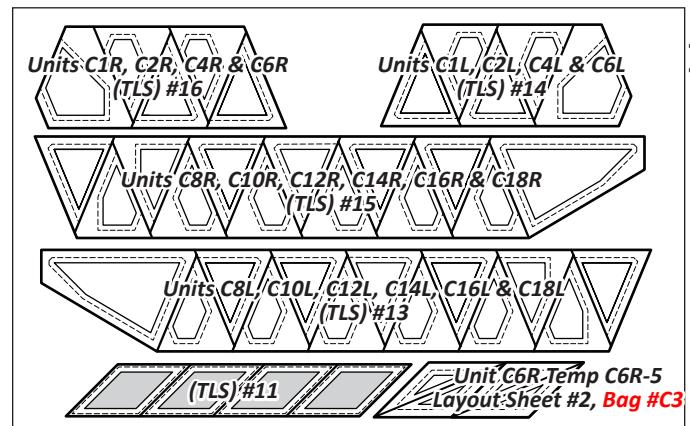
Foundation Papers: Cut out (4) each of Units C1L to C16L, C1R to C16R, and Foundation Sheets C1L, C1R, C2L & C2R [NP 897–899]. Cut (1) each of Template Layout Sheets (TLS) #1–16; Foundation Sheet Templates CR-1, CL-1, CR-3, CL-3; and T-Templates C-1 & C-2 [TP 709–711]. Place (TLS) in a temporary bag. After the fabric has been cut, the individual Sec. Templates for the (TLS) are placed into assigned Bag #s with their associated foundation papers. Reference the newsprint graphics for the location of each Unit, Template and (TLS) along with the associated Bag # if applicable. *Refer to General Information for Foundation papers and templates for additional instructions on how to prepare your foundation papers and templates.



▼ (1) TP 709



▼ (1) TP 710



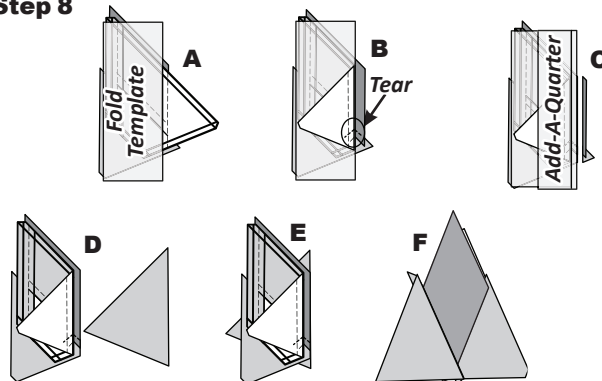
▼ (1) TP 711

STACKING: UNIT C2L, BAG #C2

Stacking: For piecing, we recommend you start with Unit C2L. Units C2L/R, C4L/R, C8L/R, C10L/R, C12L/R, C14L/R & C16L/R use the identical process (Unit C8L/R has a slightly different shape). Position the templates and fabric pieces for Unit C2L in numerical order facing **right-side up**, with the **sew-sides** aligned at the top. *Sec. 1* does not have a sew side. The stacking begins with the largest *Sec. #* on the bottom. The pieces are then stacked in reverse order, finishing with *Sec. 1* on top.



Step 8

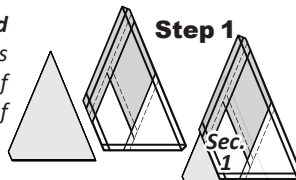


FOUNDATION PAPER PIECING: UNIT CL2

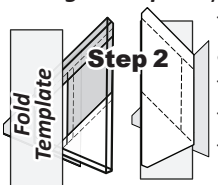


NOTE - Tracing Dashed Lines: Trace the dashed lines printed on the front side of the foundation paper onto the backside of the paper.

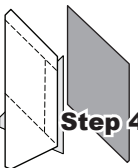
NOTE - Tracing Dashed Lines: Trace the dashed lines printed on the front side of the foundation paper onto the backside of the paper.



Step 1: Place the fabric piece for *Sec. 1* **wrong-side up** on your table. Lift the foundation paper, and slide the fabric under *Sec. 1*. Use glue to adhere the fabric to the **backside** of the paper. Repeat Step 1 for each foundation paper before moving on to Step 2.

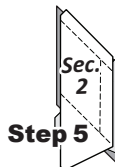


Step 2: Line the fold template up with *Line 1* and fold the paper back over the top of the fold template.



Step 3: Trim the fabric with your **Add-A-Quarter** ruler.

Step 4: Place the fabric piece for *Sec. 2* **right-side up** next to the folded-back paper.



Step 5: Lift the paper, and slide the fabric under *Sec. 1*, lining the **sew-side** up with the trimmed seam allowance. Repeat **Steps 2-5** for each foundation paper before moving on to Step 6.

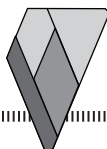
Step 6: Open the paper and sew on *Line 1*. The stitches should start and stop about 1/8" past the beginning and the end of each stitch line. Complete the sewing on each unit before moving on to the next step.

Step 7: Loosen the glue under *Sec. 1*, then press the fabric pieces open on the backside of each paper.

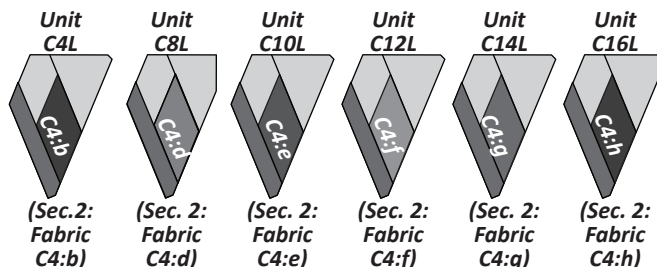


Step 8: Complete the following steps to add fabric pieces to *Sec. 3*. **A):** Place the unit paper side up on your cutting surface. Position the fold template over the top of *Sections 1 and 2*, lining the edge up with *Line 2*. **B):** Fold the paper back and tear the paper along the stitches on *Line 1*. Stop tearing when you hit the fold template. **C):** Trim the fabric with the **Add-A-Quarter** ruler. **D):** Position the third fabric piece **right-side up** next to the paper. **E):** Lift the paper and slide the fabric under *Sec. 3*. **F):** Open the paper, sew on *Line 2*, and press. (Graphics next column)

Step 9: Continue adding the remaining fabric pieces to the last section on the foundation papers. Trim the excess fabric off around the edge of the paper, on the exterior line. Place these pieces back into Bag #C2.



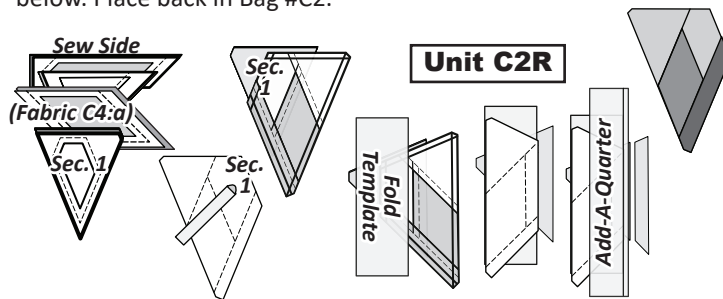
Units C4L, C8L, C10L, C12L, C14L & C16L: Paying attention to the fabric used for *Sec. 2*, follow the instructions for C2L to complete Units C4L, C8L, C10L, C12L, C14L & C16L. Place back in Bag #C1.



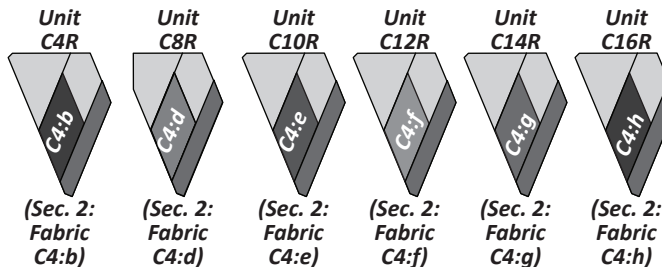
STACKING & ASSEMBLY: UNIT C2R, BAG #C2

Stacking: Position the templates and fabric pieces for Unit C2R in numerical order facing **right-side up**, with the **sew-sides** aligned at the top. (*Sec. 1* does not have a sew side.) The stacking begins with the largest *Sec. #* on the bottom. The pieces are then stacked in reverse order, finishing with *Sec. 1* on top.

Assembly: Piece Unit C2R following the instructions for C2L. The units will be mirror-images of C2L. The first few steps are shown below. Place back in Bag #C2.



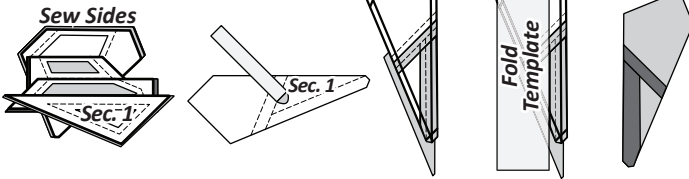
Units C4R, C8R, C10R, C12R, C14R & C16R: Paying attention to the fabric used for *Sec. 2*, follow the instructions for C2R to complete Units C4R, C8R, C10R, C12R, C14R & C16R. Place back in Bag #C2.



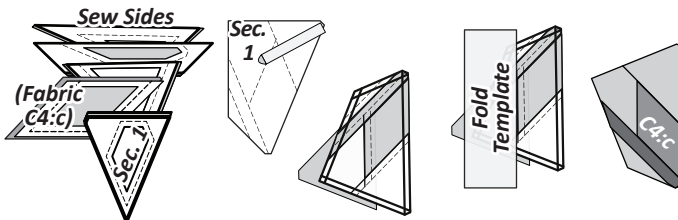
UNITS C1L/R, C6L/R & C18L/R STACKING AND PIECING GRAPHICS, BAG #C3

To make the remaining units in Bag #C3, you will essentially repeat the same process as for the previous units, using fewer or more pieces. Graphics showing stacking and the first few steps of each unit are shown below and in the next column. Pay attention to the fabric used for Sec. 1 in Units C6L and C6R.

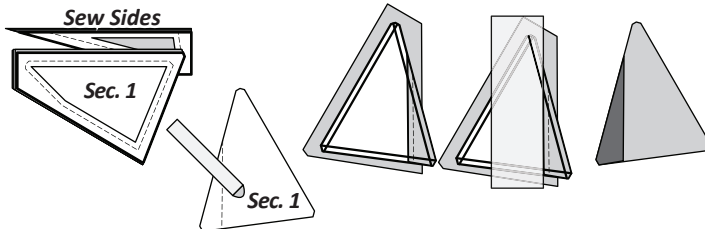
► Unit C1L



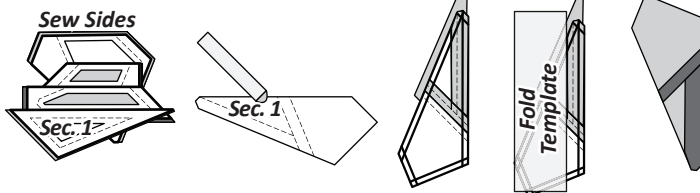
► Unit C6L: Sec 2, Fabric C4:c



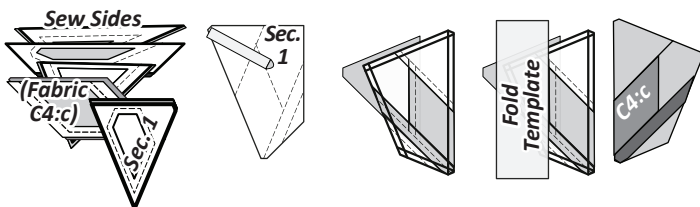
► Unit C18L



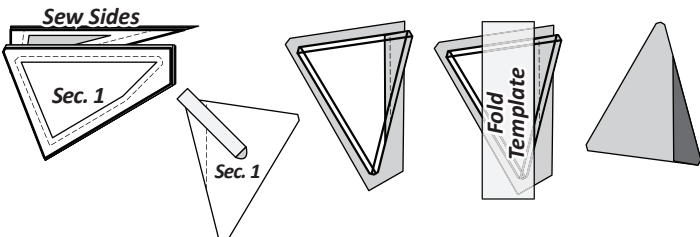
► Unit C1R



► Unit C6R: Sec 2, Fabric C4:c



► Unit C18R



BLOCK ASSEMBLY INSTRUCTIONS

Removing Paper: It is recommended that you only remove the foundation paper from each Unit just prior to joining it to another block or block group. Some of the elements do not require you to remove the paper until you are ready to assemble the whole quilt project, while other elements are joined at this time to complete the block group that you are working on. It is important that you read forward before sewing any of the block groups together.

► Finishing the Blocks

Assembly Illustration 1: This shows a layout of the blocks from the front side of the quilt. Use a design wall to place these units in the correct order. Set your sewing machine to sew a 1/4" seam. Follow the remaining assembly illustrations and press seams in the direction the arrows are pointing.

Assembly Illustration 2: Remove the papers from each unit just before you sew the units together. Use a little fabric glue at the smart corners and interlocking seams to help you line up the two units you are joining. Working left to right, join the following pieces:

- Join Unit C7L to Unit C8L. Press toward Unit C8L.
- Join Unit C1L to Unit C2L. Press toward Unit C2L.
- Join Unit C1R to Unit C2R. Press toward Unit C2R.
- Join Unit C7R to Unit C8R. Press toward Unit C8R.

Assembly Illustration 3: Working left to right, join the following pieces:

- Join C7L/C8L to Unit C9L. Press toward Unit C9L.
- Join C1L/C2L to Unit C3L. Press toward Unit C3L.
- Join C1R/C2R to Unit C3R. Press toward Unit C3R.
- Join C7R/C8R to Unit C9R. Press toward Unit C9R.

Assembly Illustration 4: Working left to right, join the following pieces:

- Add remaining units (C10L to C18L) in numerical order to C7L/C8L/C9L. Press each seam toward unit just added.
- Add remaining units (C4L to C6L) in numerical order to C1L/C2L/C3L. Press each seam toward unit just added.
- Add remaining units (C4R to C6R) in numerical order to C1R/C2R/C3R. Press each seam toward unit just added.
- Join CR1/CR2/CR3 to Unit CR4. Press toward Unit CR4.
- Add remaining units (C10L to C18L) in numerical order to C7L/C8L/C9L. Press each seam toward unit just added.

Assembly Illustration 5: Working left to right, join the following pieces:

- Join T-Temp C-1 to C7L–C18L section. Press away from T-Temp C-1.
- Join T-Temp C-2 to C1L–C6L section. Press toward T-Temp C-2.
- Join T-Temp C-1 to C1R–C6R section. Press away from T-Temp C-1.
- Join T-Temp C-2 to C7R–C18R section. Press toward T-Temp C-2.

To avoid Y-seams in the assembly process, the remaining pieces are NOT joined at this time. The pieces are set aside until all the piecing is completed for the remaining groups in your mixer pattern.