

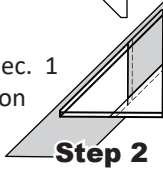
## FOUNDATION PAPER PIECING: UNIT BF2L

NOTE - Tracing the Dashed Lines: Optional

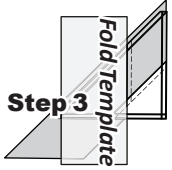
**Step 1:** Find Sec. 1 on the foundation paper. Place a small amount of fabric glue on the **backside** of the paper under Sec. 1.



**Step 2:** Position the first piece of fabric for Sec. 1 **wrong-side up** on your table. Lift the foundation paper, slide the fabric under Sec. 1. Repeat Steps 1 and 2 for each foundation unit.



**Step 3:** Place the fold template over the top of Sec. 1. Fold the paper back over the fold template and trim the fabric with the **Add-A-Quarter** ruler. Continue with the process for foundation paper piecing by adding the template pieces to each section on the foundation units.



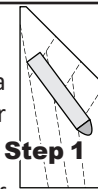
### ► TRP Lines

After the paper piecing is completed on each unit, the **TRP Lines** are sewn on the foundation papers. Set your machine to sew a 2.8 stitch length for the basting stitch on the **TRP Line**.

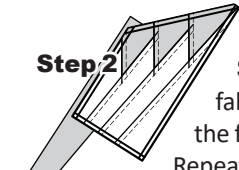
## FOUNDATION PAPER PIECING: UNIT BF1L

NOTE - Tracing the Dashed Lines: Optional

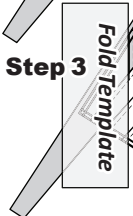
**Step 1:** Find Sec. 1 on the foundation paper. Place a small amount of fabric glue on the **backside** of the paper under Sec. 1.



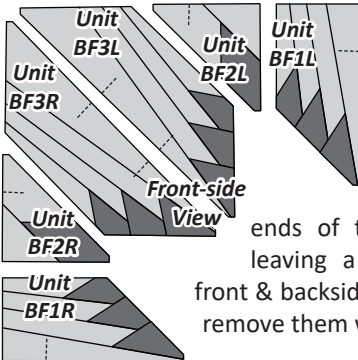
**Step 2:** Position the first piece of fabric for Sec. 1 **wrong-side up** on your table. Lift the foundation paper, slide the fabric under Sec. 1. Repeat Steps 1 and 2 for each foundation unit.



**Step 3:** Place the fold template over the top of Sec. 1. Fold the paper back over the fold template and trim the fabric with the **Add-A-Quarter** ruler.



Continue with the process for foundation paper piecing. After the paper piecing is completed on all units, the TRP lines are sewn on each of the foundation papers.



**Trimming:** After the **TRP Lines** have been sewn, the excess fabric and paper is trimmed off around the perimeter of each unit. We also suggest trimming off the ends of the remaining basting stitches leaving a tail about 1/2" long on the front & backside of the paper so you can easily remove them when the quilt is done.

## UNIT BF1R, BF2R, & BF3R, BAG #BF1

Repeat the previous stacking and piecing instructions for Units BF1R, BF2R, & BF3R. When you are done, place the pieces back into their assigned bags. **Watch for the Repress seam on BF3R. Make sure to sew on the solid line 6. When you remove your papers, you will repress this seam to have interlocking seams for final assembly.**

## Unit S1 - S4 Yardage, Make (16) Star Points

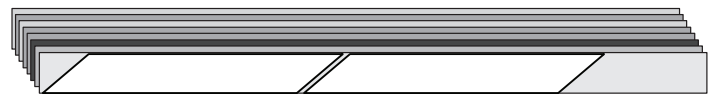
GROUP-S FABRIC #	YARDAGE INCH	ASSIGNED COLOR
Fabric S1 Strip Piecing Template	1/8 yd or (3")	Fabric Swatch
Fabric S2 Strip Piecing Template	1/8 yd or (3")	Fabric Swatch
Fabric S3 Strip Piecing Template	1/8 yd or (3")	Fabric Swatch
Fabric S4 Strip Piecing Template	1/8 yd or (3")	Fabric Swatch
Fabric S5 Strip Piecing Template	1/8 yd or (3")	Fabric Swatch
Fabric S6 Strip Piecing Template	1/8 yd or (3")	Fabric Swatch
Fabric S7 Strip Piecing Template	1/8 yd or (3")	Fabric Swatch
Fabric S8 Strip Piecing Template	1/8 yd or (3")	Fabric Swatch

### ► Cutting Strips:

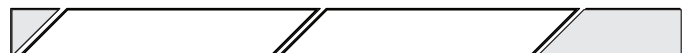
**Step 1:** One 3" by 42" strip is cut from each color assigned to the Fabric #s on the chart above for a total of (8) strips.

Fabric S8	Foundation Sheet S4
Fabric S7	Foundation Sheet S3
Fabric S6	<b>Step 1</b> Foundation Sheet S2
Fabric S5	Foundation Sheet S1
Fabric S4	Foundation Sheet S4
Fabric S3	Foundation Sheet S3
Fabric S2	Foundation Sheet S2
Fabric S1	Foundation Sheet S1

**Step 2:** The strips are pressed open and stacked **right-side-up** with Fabric S8 on the bottom, ending with Fabric S1 on the top.



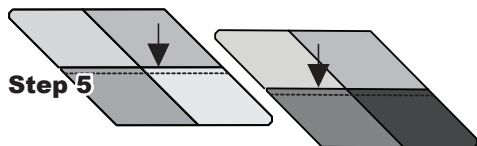
**Step 3:** Position **Strip Template S1** on top of your stack, as shown, and cut (2) piece from each strip.



**Step 4:** From the left over strips, cut (3) small swatches from each fabric.

- One set of swatches is used to paste into the **Assigned Color** swatch boxes on the Yardage chart shown above.
- The second set of swatches are used to paste the **Fabric Layout** section shown on the following page.
- The third set of swatches are pasted onto the **Foundation Papers** labeled *Foundation Sheets S1, S2, S3, & S4*.

**Step 5:** When the sewing is completed the remaining foundation paper is removed. The seams are pressed facing towards Units S1 and S3 as shown with the arrows.



- **Unit BF1R** is joined with **Unit BF2R**. Press seam towards **Unit BF2R**.
- **Unit BF1L** is joined with **Unit BF2L**. Press seam towards **Unit BF1L**.

► **Illustration 3**

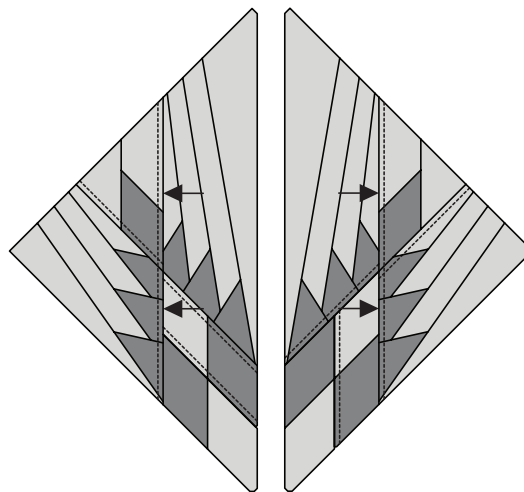
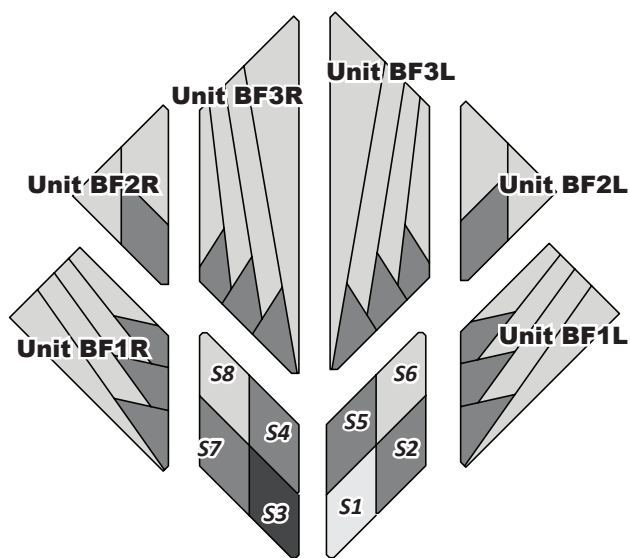
Join the following units.

- **Diamond Star/Unit BF3R** are joined with **Units BF1R/BF2R**. Press seam towards **Units BF1R/BF2R**.
- **Diamond Star/Unit BF3L** are joined with **Units BF1L/BF2L**. Press seam towards **Units BF1L/BF2L**.

**BLOCK ASSEMBLY**

► **Illustration 1**

The blocks units are arranged in the order shown. Remove the foundation papers and set your machine to sew a 1/4" seam allowance. Pay special attention to Unit B3R. Once you remove the papers from this unit, you will repress your final seam so that it interlocks where it joins with Unit BF3L.



► **Finishing the Block**

To avoid Y-seams in the assembly process the left and right units are not joined at this time. The pieces are set aside until all the piecing is completed for the remaining groups in your mixer pattern.

► **Illustration 2**

Join the following units.

- **Diamond Star, Group S3, S4, S7, & S8** are joined with **Unit BF3R**. Press seam towards the **Diamond Star**.
- **Diamond Star, Group S1, S2, S5, & S6** are joined with **Unit BF3L**. Press seam towards **Units BF3L**.

