

GROUP K: DAGGERED TOP INSTRUCTIONS

Ziploc Storage Bags: You will need (2) bags to complete the organization for these instructions. Label the bags as follows to stay organized while cutting the Foundation Units and Templates.

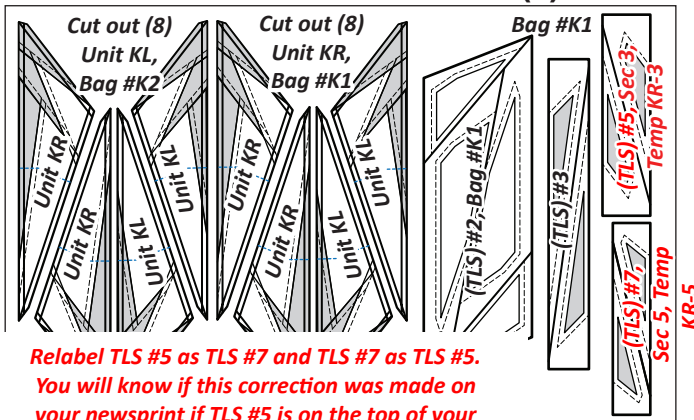
- Bag #K1: (8) Unit KR papers, and Unit KR cutting templates
- Bag #K2: (8) Unit KL papers, and Unit KL cutting templates

► Preparing Foundation Papers & Templates:

Foundation Papers: This pattern includes enough foundation papers to complete (8) Star Points.

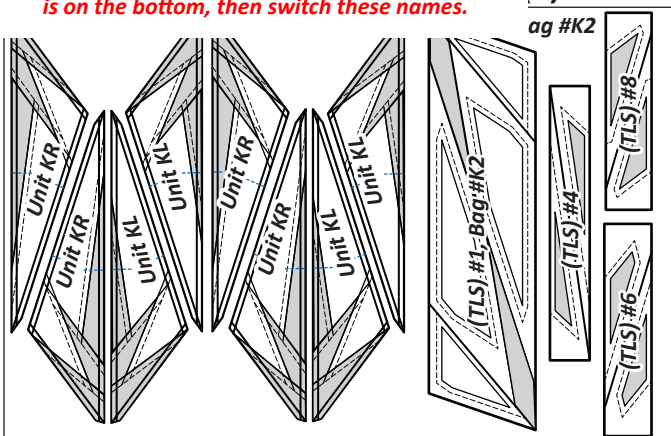
Newsprint: Cut out (8) ea. Unit KR & Unit KL and the corresponding TLSs [NP 863 & NP 864]. After the fabric has been cut, the individual Sec. Templates for the (TLS) are placed into assigned Bag #s with their associated foundation papers. See the newsprint graphics that follow for information on how to organize your units and templates into bags. *Refer back to General Information for Foundation papers and templates for additional instructions on how to prepare your foundation papers and templates.

► (1) NP 863



Relabel TLS #5 as TLS #7 and TLS #7 as TLS #5. You will know if this correction was made on your newsprint if TLS #5 is on the top of your newsprint as shown in the graphic above. If TLS is on the bottom, then switch these names.

1) NP 864



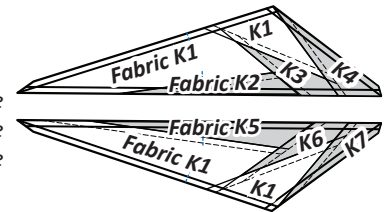
► Daggered Top Fabric Information:

The *Unit Chart* that follows includes yardage, fabric numbers, and a reference to which fabrics go with the Templates and (TLS) to complete **Units KL & KR**. A Color Layout, shown below, gives a visual reference to where the fabrics are located on each unit.

Units KL & KR, Yardage, Make (8) ea.		
GROUP K-006 FABRIC #	YARDAGE INCH	ASSIGNED COLOR
Fabric K1 Unit KL & KR (TLS) #1 & #2	5/8 yd or (22")	Fabric Swatch
Fabric K2:a Unit KL (TLS) #4	1/8 yd or (2")	Fabric Swatch
Fabric K2:b Unit KL (TLS) #4	1/8 yd or (2")	Fabric Swatch
Fabric K3:a Unit KL (TLS) #6	1/8 yd or (2-1/2")	Fabric Swatch
Fabric K3:b Unit KL (TLS) #6	1/8 yd or (2-1/2")	Fabric Swatch
Fabric K4:a Unit KL (TLS) #8	1/8 yd or (2-1/2")	Fabric Swatch
Fabric K4:b Unit KL (TLS) #8	1/8 yd or (2-1/2")	Fabric Swatch
Fabric K5:a Unit KR (TLS) #3	1/8 yd or (2-1/2")	Fabric Swatch
Fabric K5:b Unit KR (TLS) #3	1/8 yd or (2-1/2")	Fabric Swatch
Fabric K6:a Unit KR (TLS) #5	1/8 yd or (2-1/2")	Fabric Swatch
Fabric K6:b Unit KR (TLS) #5	1/8 yd or (2-1/2")	Fabric Swatch
Fabric K7:a Unit KR (TLS) #7	1/8 yd or (2")	Fabric Swatch
Fabric K7:b Unit KR (TLS) #7	1/8 yd or (2")	Fabric Swatch

► Color Layout

NOTE - Backside Graphic: The color layout shown matches the printed side of the paper, and the backside of the quilt.

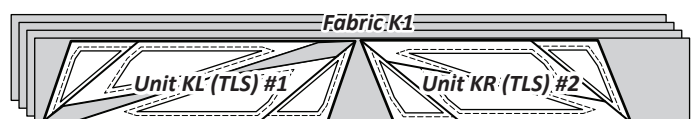


NOTE - Templates and (TLS) are repositioned on the cut strips to achieve the number of cuts required in the cutting Instructions. Please read carefully to ensure the correct number of pieces are stacked beneath each Template before cutting.

NOTE - Repositionable glue placed on the backside of each template will keep the templates and (TLS) from moving during the cutting process.

► Fabric K1: (TLS) #1 & #2

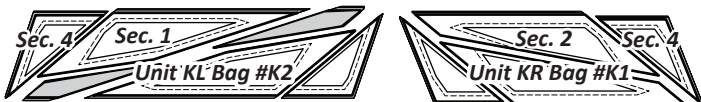
Step 1: Cut and stack (4) 5-1/2" by 42" strips from Fabric K1 facing **right-side up** on your cutting table. Place **Unit KL, (TLS) #1** onto the strips aligned with the left edge of the strips. Place **Unit KR, (TLS) #2** onto the right half of the strips.



Step 2: Cut (4) pieces, matching the size and shape of each TLS.

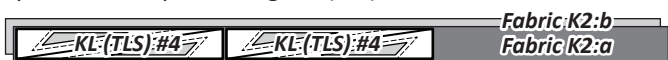


Step 3: Four (4) fabric pieces are stacked beneath each (TLS). The cutting is completed by slicing through the paper on each *Cut Line* in numerical order to separate the individual sections. Clip the template pieces to the fabric beneath. Place the Unit KL pieces in Bag #K2 and Unit KR pieces in Bag #K1.



► **Fabric K2:a & K2:b: (TLS) #4**

Step 1: Cut (1) 2" by 42" strip from each *Fabric K2:a* and *K2:b*. Stack the pieces facing *right-side up* on your cutting table with K2:b on the bottom and K2:a on top. Place **Unit KL, (TLS) #4** on the stack and cut (4) pieces, (2) from each fabric, matching the size of the Layout Sheet, repositioning the (TLS) as needed for each cut.

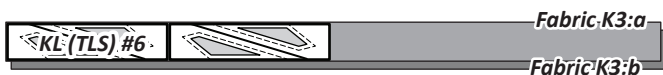


Step 2: Stack the four (4) fabric pieces beneath the (TLS) with K2:b on the bottom and K2:b on top, then cut on Line 1 to separate the individual sections. Clip the template pieces to the fabric beneath. Place the pieces in Bag #K2.



► **Fabric K3:a & K3:b: (TLS) #6**

Step 1: Cut (1) 2-1/2" by 42" strip from each *Fabric K3:a* & *K3:b*. Place the strip facing *right-side up* on your cutting table with K3:b on the bottom and K3:a on top. Place **Unit KL, (TLS) #6** on the stack and cut (4) pieces, (2) from each fabric, matching the size of the Layout Sheet, repositioning the (TLS) as needed for each cut.



Step 2: Stack the four (4) fabric pieces beneath the (TLS) with K3:b on the bottom and K3:a on top, then cut on Line 1 to separate the individual sections. Clip the template pieces to the fabric beneath. Place the pieces in Bag #K2.



► **Fabric K4:a & K4:b: (TLS) #8**

Step 1: Cut (1) 2-1/2" by 42" strip from each *Fabric K4:a* & *K4:b*. Place the strip facing *right-side up* on your cutting table with K4:b on the bottom & K4:a on top. Place **Unit KL, (TLS) #8** on the stack and cut (4) pieces, (2) from each fabric, matching the size of the Layout Sheet, repositioning the (TLS) as needed for each cut.

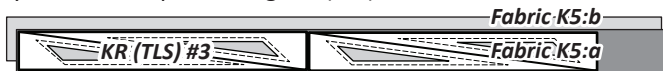


Step 2: Stack the four (4) fabric pieces beneath the (TLS) with K4:b on the bottom and K4:a on top, then cut on Line 1 to separate the individual sections. Clip the template pieces to the fabric beneath. Place the pieces in Bag #K2.



► **Fabric K5:a & K5:b: (TLS) #3**

Step 1: Cut (2) 2-1/2" by 42" strips from each *Fabric K5:a* & *K5:b*. Stack the pieces facing *right-side up* on your cutting table with K5:b on the bottom & K5:a on top. Place **Unit KR, (TLS) #3** on the stack and cut (4) pieces, (2) from each fabric, matching the size of the Layout Sheet, repositioning the (TLS) as needed for each cut.



Step 2: Stack the four (4) fabric pieces beneath the (TLS) with K5:b on the bottom and K5:a on top, then cut on Line 1 to separate the individual sections. Clip the template pieces to the fabric beneath. Place the pieces in Bag #K1.



► **Fabric K6:a & K6:b: (TLS) #5**

Step 1: Cut (1) 2-1/2" by 42" strip from each *Fabric K6:a* & *K6:b*. Place the strip facing *right-side up* on your cutting table with K6:b on the bottom and K6:a on top. Place **Unit KR, (TLS) #5** on the stack and cut (4) pieces, (2) from each fabric, matching the size of the Layout Sheet, repositioning the (TLS) as needed for each cut.



Step 2: Stack the four (4) fabric pieces beneath the (TLS) with K6:b on the bottom and K6:a on top, then cut on Line 1 to separate the individual sections. Clip the template pieces to the fabric beneath. Place the pieces in Bag #K1.



► **Fabric K7:a & K7:b: (TLS) #7**

Step 1: Cut (1) 2" by 42" strip from each *Fabric K7:a* & *K7:b*. Place the strip facing *right-side up* on your cutting table with K7:b on the bottom and K7:a on top. Place **Unit KR, (TLS) #7** on the stack and cut (4) pieces, (2) from each fabric, matching the size of the Layout Sheet, repositioning the (TLS) as needed for each cut.



Step 2: Stack the four (4) fabric pieces beneath the (TLS) with K7:b on the bottom and K7:a on top, then cut on Line 1 to separate the individual sections. Clip the template pieces to the fabric beneath. Place the pieces in Bag #K1.



■ **STACKING: UNIT KL BAG #K2**

Position the templates and fabric pieces in numerical order facing *right-side up*, with the *sew-sides* aligned at the top. *Sec. 1* does not have a sew side.

Stacking: The stacking process begins with the largest *Sec. #* on the bottom. The pieces are stacked in reverse order finishing with *Sec. 1* on top.

