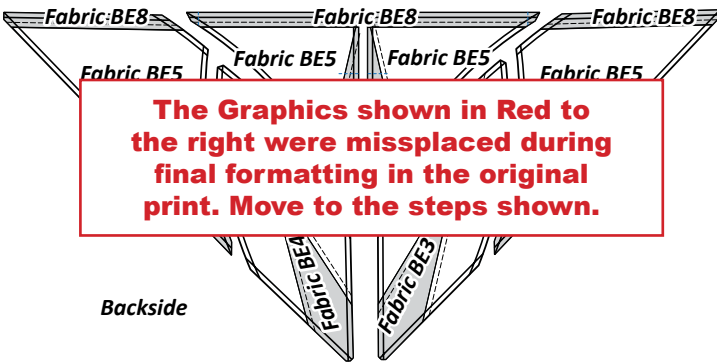


► Color Layout



The Graphics shown in Red to the right were misplaced during final formatting in the original print. Move to the steps shown.

Fabric Color Layout: The *Color Layout* for Group BE has been provided to help you match up the fabric numbers with the assigned Units and T-Templates on the yardage charts.

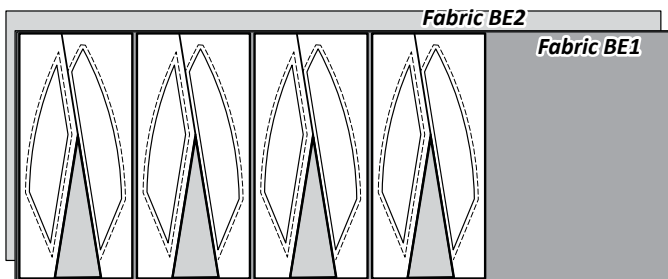
NOTE - Why the backside?: The backside quilt image matches up to the printed side of the foundation papers. When assigning your Fabric #s to the foundation paper and templates match the color layout to the printed side of the paper. Fabric swatches pasted to the foundation papers helps keep you organized when adding the fabric pieces to the foundation papers.

CUTTING INSTRUCTIONS: GROUP BE

► Fabric BE1 & BE2: (TLS #2)

Step 1: Cut (1) 16" by 42" strip from each *Fabric BE1* and *Fabric BE2*. Stack the fabrics facing *right-side up*.

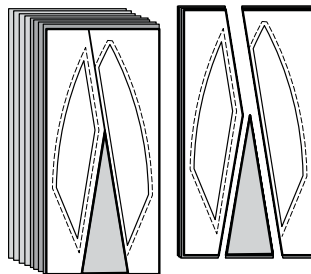
Step 2: The *Unit B1 (TLS #2)* is used to cut (4) pieces from each fabric, matching the size of the (TLS). Reposition the template for each cut.



Step 3: Restack the fabric pieces as shown with the (4) pieces cut with *Fabric BE2* on the bottom and (4) *Fabric BE1* on the top.

Step 4: The (8) pieces are stacked under the (TLS #2). A paper clip is used to clip each section to the fabric to keep the template pieces from moving in the cutting process.

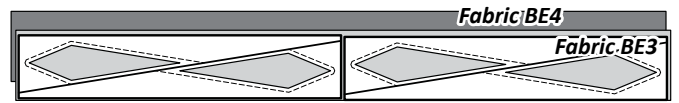
Step 5: The cutting is completed by slicing through the paper on each cut line to separate the individual sections. Place the individual template pieces clipped to the fabric with the *Unit B1 Foundation Papers* in *Bag #BE1*.



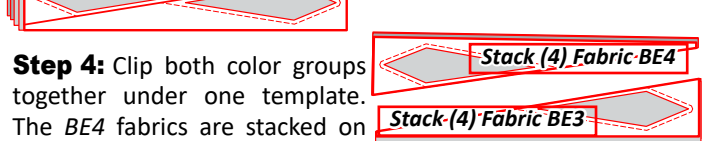
► Fabric BE3 & BE4: (TLS #1)

Step 1: Cut (1) 4-1/2" by 42" strip from each *Fabric BE3* and *Fabric BE4* and stack facing *right-side up*.

Step 2: The *Unit B1 (TLS #1)* is used to cut (2) pieces from each fabric, matching the size of the (TLS).



Step 3: The (4) pieces are stacked under (TLS #1). The cutting is completed by slicing through the paper on each *Cut Line*.

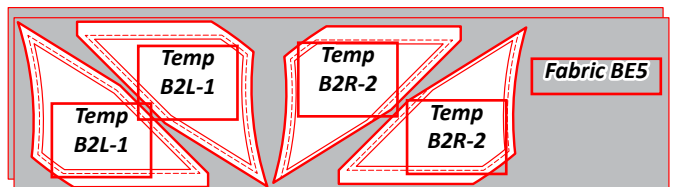


Step 4: Clip both color groups together under one template. The *BE4* fabrics are stacked on the bottom and the *BE3* fabric pieces on top. Place the pieces in *Bag #BE1*.

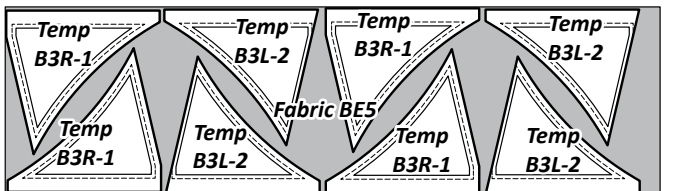
► Fabric BE5: Temp B2L-1, B2R-2, B3L-2, B3R-1

Step 1: Cut (1) 34" x 42" strip from *Fabric BE5*, then subcut (2) 11" by 42" strips and (1) 12" by 42" strip.

Step 2: Stack the 11" by 42" strips facing *right-side up*. *Temp B2L-1 and B2R-2* are used to cut (4) pieces matching the size and shape of each Temp. Place these pieces in *Bag #B2*.



Step 3: Position the 12" by 42" strip facing *right-side up*. *Temp B3L-2 and B3R-1* are used to cut (4) pieces matching the size and shape of each Temp. Place these pieces in *Bag #BE3*.



► Fabric BE6 (TLS #4)

Step 1: Cut and stack (2) 2-1/2" by 42" strips from *Fabric BE6*, facing *right-side up*.

Step 2: The *Unit B2L & B3R (TLS #4)* is used to cut (4) pieces the same size as the (TLS).



Step 3: The (4) pieces are stacked beneath the (TLS). The cutting is completed by slicing through the paper on each *Cut Line* to separate the individual sections. Place the *B2L-2* pieces in *Bag #BE2* and the *B3R-2* pieces in *Bag #BE3*.



► Fabric BE7: (TLS #3)

Step 1: Cut (2) 3" by 42" strips from *Fabric BE7*, and stack facing *right-side up*.