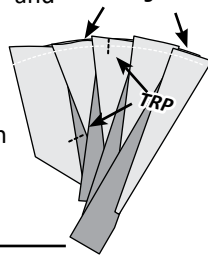


## FOUNDATION PAPER PIECING: UNIT F3

**Sewing the (TRP) and Basting Lines:** After adding the fabric for Sec. 9 re-set your stitch length at 2.5 and sew both (TRP) Lines on each Foundation Unit. After the (TRP) Lines are sewn, the threads are trimmed on the front and backside of each unit.

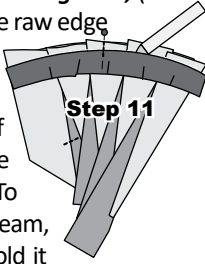
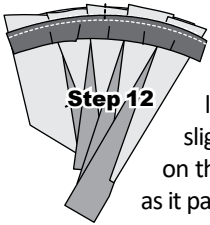
**Step 1:** A basting stitch is then sewn the full length of the dashed line labeled Basting Stitch Line 9. Reset your stitch length for paper piecing.



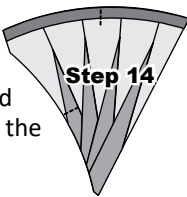
### SEWING ON THE VEIN:

**Step 2:** First, position both fabrics facing *right-sides-together*, (vein on top). Match and pin the TRP Lines, then glue the raw edge of the accent strip along the basting stitches to secure the edges.

**Step 3:** Position the fabric with the printed side of the paper facing up, fabric on the bottom and **sew Line 10**. To avoid sewing puckers into the seam, lift the paper about 1/2" and hold it slightly above the surface of the machine as you sew on the stitch line. This allows the fabric to move freely as it passes over the feed dogs on your machine.

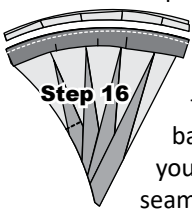


**Step 4:** After the seam is completed, fold and press the accent strip to cover the curved section on the foundation paper **assigned to Sec. 10**.

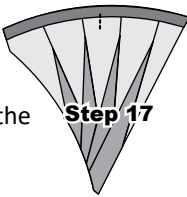


**Step 5:** The excess fabric and paper is trimmed off on the solid line around the perimeter of the foundation paper.

**Step 6:** The fabric, paper and basting stitches hidden under the accent strip needs to be trimmed away. To remove this excess, position the paper side of Unit F4 down against the cutting table. The accent strip is temporarily folded back to gain access to the fabric and paper underneath the vein.

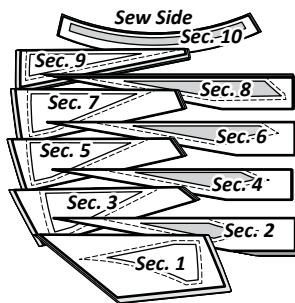


**Step 7:** Once the fabric is folded back, the excess fabric, paper, and basting threads are trimmed away, along the inside edge of the basting stitches. This will leave you with a 'scant-quarter-inch-seam' under the accent strip.



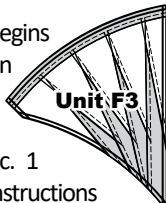
**Step 8:** Repress the accent strip and place the pieces back in Bag #F2.

### STACKING: UNIT F3, BAG #F2

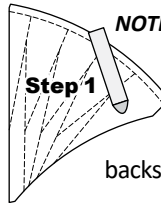


#### ► Fabric F4, F5 & F8

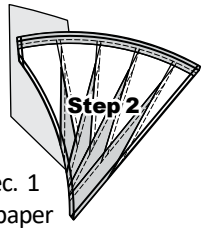
**Stacking:** Stacking begins with the largest Sec. # on the bottom. The pieces are stacked in reverse order finishing with Sec. 1 on top. The piecing instructions below are created for Steps 1-8 using the graphics for Unit F3.



**NOTE - Tracing the Dashed Lines: Optional.**

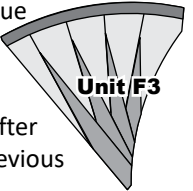


**Step 1:** Find Sec. 1 on the foundation paper. Place a small amount of fabric glue on the backside of the paper under Sec. 1.



**Step 2:** Position the first piece of fabric for Sec. 1 **wrong-side up** on your table. Lift the foundation paper and slide the fabric under Sec. 1 to adhere the paper to the wrong side of the fabric.

**Step 3:** Repeat the previous steps as you continue to sew the fabric pieces under each Sec # on Unit F3.



**Sewing the (TRP) and Basting Lines:** After adding the fabric for Sec. 9 return to the previous instructions for adding the vein.

#### ► Paper Piecing Bag F3: Fabric F6, F7 & F9

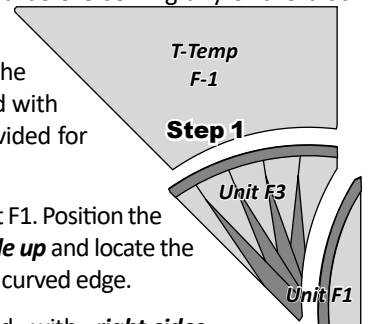
The piecing and stacking instructions for Units F4 & F3 in Bag F3 are the same, just different colors.

### BLOCK ASSEMBLY INSTRUCTIONS

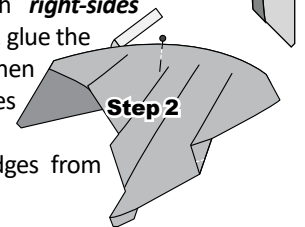
**Removing Paper:** It is recommended that you only remove the foundation paper from each Unit just prior to joining it to another block or block group. Some of the mixer elements do not require you to remove the paper until you are ready to assembly the whole quilt project, while other mixer elements are joined at this time to complete the block group that you are working on. It is important that you read forward before sewing any of the block groups together.

**Curved Piecing:** Several of the Units and Block groups are joined with curved piecing. Graphics are provided for Units F3, F1, and T-Template F-1.

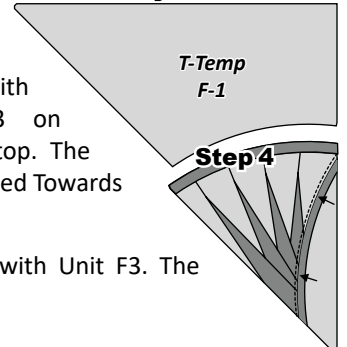
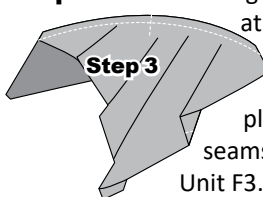
**Step 1:** Unit F3 is sewn onto Unit F1. Position the units on your table facing *right-side up* and locate the (TRP) Lines sewing on each of the curved edge.



**Step 2:** The pieces are joined with *right-sides together*. Match and pin the TRP Lines, glue the smart corners at the both end points, then apply the glue along the curved edges within the boundary of the seam allowance. This will keep the raw edges from slipping in the sewing process.



**Step 3:** The sewing begins at the left edge with Unit F3 on placed on top. The seams are pressed Towards Unit F3.



**Step 4:** Joining T-Template F-1 with Unit F3. The seams are pressed into the vein.