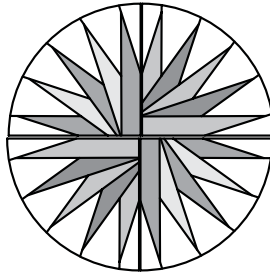


Spikes

4th of July JNQ00275-B-002

GROUP B2: SPIKES INSTRUCTIONS

Ziploc Storage Bags: You will need (1) large Block Group Bag labeled B2 and (6) smaller Color Group Bags to complete the organization for these blocks. Label the bags as follows.

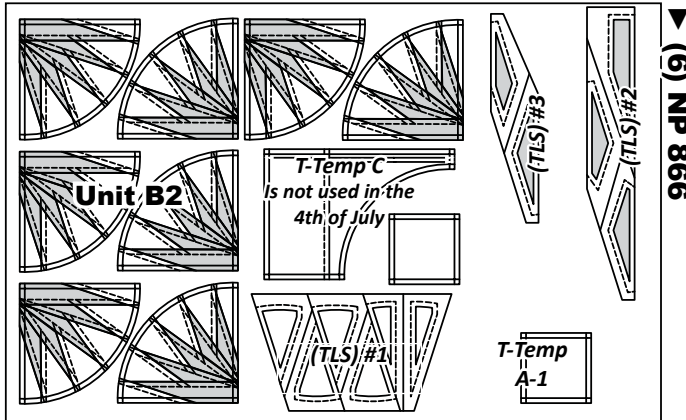


- Block Group Bag B2:
- Color Group a: (8) Unit B2 Foundation Papers
- Color Group b: (8) Unit B2 Foundation Papers
- Color Group c: (8) Unit B2 Foundation Papers
- Color Group d: (8) Unit B2 Foundation Papers
- Color Group e: (8) Unit B2 Foundation Papers
- Color Group f: (8) Unit B2 Foundation Papers

Preparing Foundation Papers & Templates:

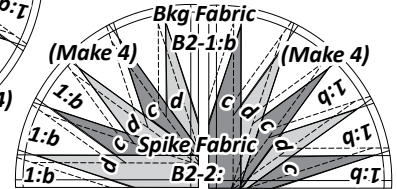
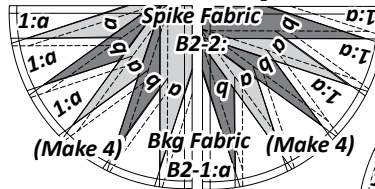
Cut out (48) Unit B2, Foundation Papers [NP 866]. The Template Layout Sheets (TLS) are placed in Block Group Bag B2. After the fabric has been cut, the individual Sec. Temp's and are placed into the assigned Block Group Bags with their associated foundation papers.

NOTE - T-Template C is not used in the '4th of July' quilt layout. Therefore, fabric and cutting instructions are not included with these instructions.

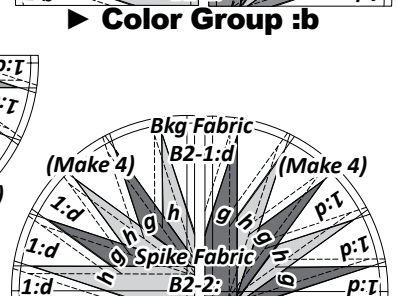
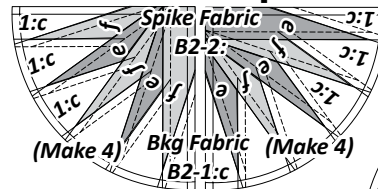


NOTE - Backside Graphic: The color layouts shown match the printed side of the paper, which is the back side of the quilt. Fabrics #s B2-1, thru B2-2 are referenced on each block along with the assigned letter colors (a-l). Note that for each color group one set of (4) blocks starts with one color and the other set starts with the other color. Front Side layouts are shown on the back page. The assigned Color Groups:(a to f) for each Block Group are associated with the background colors behind the spikes.

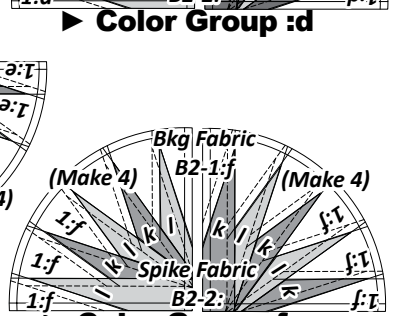
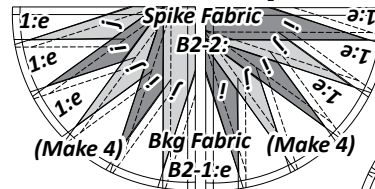
Color Group :a



Color Group :c



Color Group :e



Spike Fabric Information:

The Unit Chart below includes the yardage, fabric numbers, and a reference to the Fabrics #s assigned to the (TLS) for Unit B2. Fabric B2-1 is assigned to the (6) colors used for the Background sections. Fabric B2-2 is assigned to the (12) colors used for the spikes. The yardage included for each color is calculated for (8) blocks.

Unit B2, Yardage, Make (48) ea. Choose (6) Background Colors and (12) Spike Colors

GROUP-B2 FABRIC #	YARDAGE INCH	FABRIC SWATCH	FABRIC SWATCH	FABRIC SWATCH	FABRIC SWATCH	FABRIC SWATCH	FABRIC SWATCH
Fabric B2-1: (a-f) Bkg. Unit B2 (TLS) #1	3/8 yd or (12") ea.	B2-1:a 8785-Night	B2-1:b Navy	B2-1:c Emerald	B2-1:d Peacock	B2-1:e 4932-Night	B2-1:f Rainbow
Fabric B2-2: (a-l) Spikes Unit B2 (TLS) #2 & #3	1/4 yd or (5") ea.	B2-2:a Purple	B2-2:c Turq	B2-2:e Mint	B2-2:g Beach	B2-2:i Cantaloupe	B2-2:k Red
		B2-2:b Sea	B2-2:d Pansy	B2-2:f Yellow	B2-2:h Neon	B2-2:j Berry	B1-2:l Pink