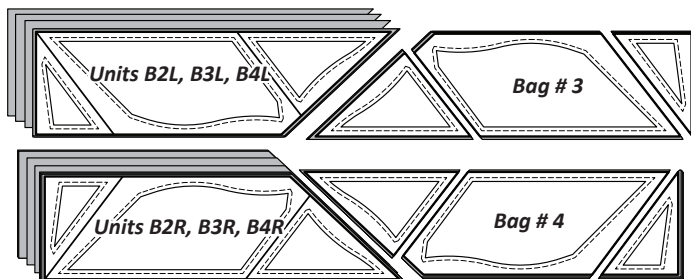


Step 2: (4) pieces are stacked beneath each (TLS). Complete the cutting by slicing through the paper and fabric on each Cut Line. The left template pieces are placed in Bag #B3, right pieces in Bag #B4.



► **Fabric B7: (TLS #8)**

Step 1: Cut & stack (2) 4-1/2" by 42" strips from Fabric B7, facing **right-side up**. Unit B2L, B2R, B3L, B3R, B4L, & B4R (TLS) #8 is used to cut (4) pieces matching the size of the (TLS).



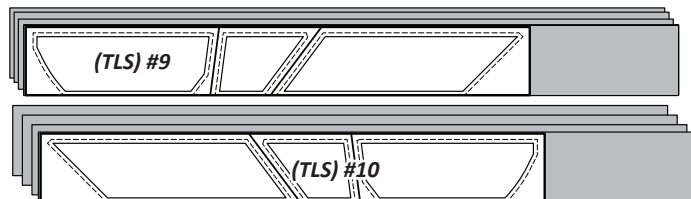
Step 2: (4) pieces are stacked beneath the (TLS). (Note: The remaining (TLS) are not used). Complete the cutting by slicing through the paper and fabric on each Cut Line. The left template pieces are placed in Bag #B3, right pieces in Bag #B4.



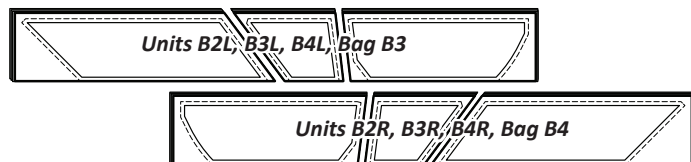
► **Fabric B8: (TLS #9 & #10)**

NOTE - Quiltster: If you pre-cut your fabric strips using the Quiltster APP, you will need to sub-cut each 9" strip into (2) 4-1/2" strips to achieve the number of strips listed in Step 1.

Step 1: Cut (8) 4-1/2" by 42" strips from Fabric B8. The strips are stacked facing **right-side up** into **two stacks of (4) strips**. **Template Layout Sheet #9** and **Template Layout Sheet #10** are used to cut (4) pieces matching the size of each (TLS).

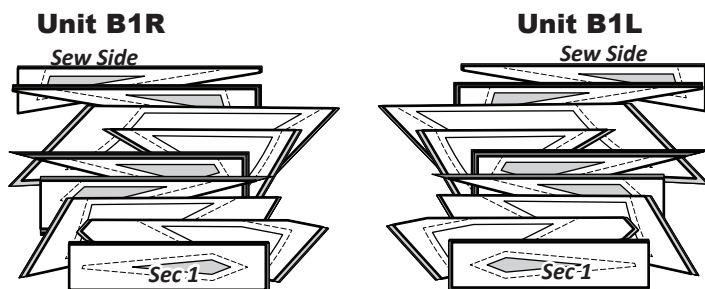


Step 2: Complete the cutting by slicing through the paper and fabric on each Cut Line. The left template pieces are placed in Bag #B3, right pieces in Bag #B4.



■ **STACKING: UNIT B1L, BAG #B1, UNIT B1R, BAG #B2**

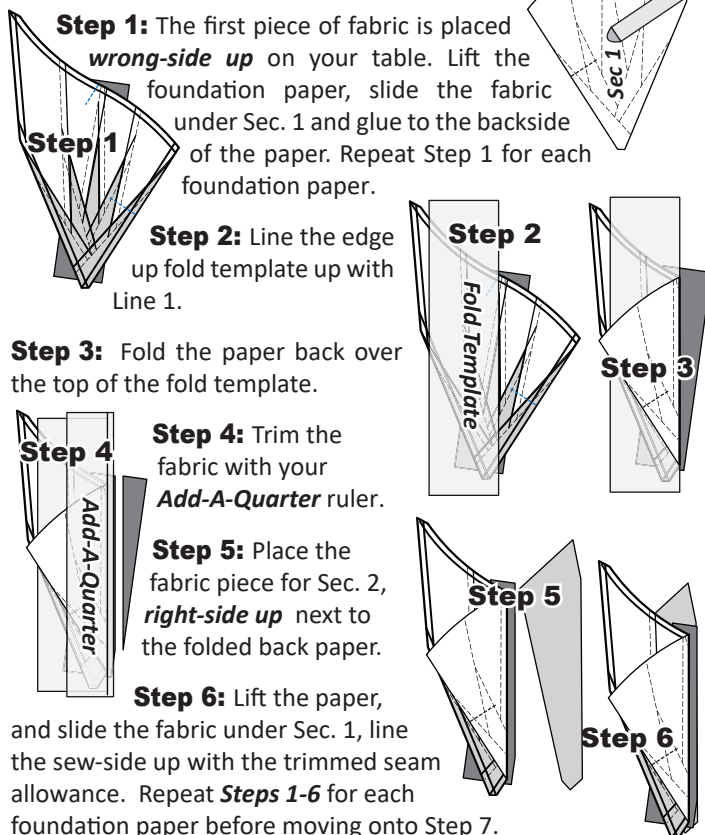
Sorting: The Sec. Templates in each bag are matched and paired up with the Sec #s printed on the foundation papers for each unit.



Stacking: The stacking process begins with the largest Sec. # on the bottom of each stack. The pieces are stacked in reverse order finishing with Sec. 1 on top. The paper piecing instructions are written using the graphics for Unit B1L.

■ **FOUNDATION PIECING: UNIT B1L**

NOTE - Tracing the Dashed Lines: Place the foundation paper onto a light table. Flip the foundation paper over and trace the dashed lines printed on the front side of the foundation paper, onto the backside of the paper.



Step 7: Open the paper and sew on Line 1. The stitches should start and stop about 1/8" past the beginning and the end of each stitch line. Complete the sewing on each unit before moving onto the next step.

Step 8: Loosen the glue under Sec. 1, then press the fabric pieces open on the backside of each paper.