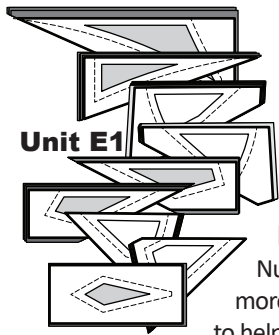


STACKING: UNIT E2 & E1 BAG #E2 & E1

Organization: The Sec. templates are stacked in sewing order facing right-side-up with the sew-sides aligned at the top. Sec. 1 does not have a sew side.



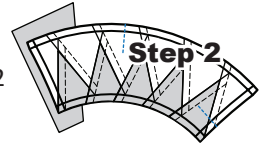
Stacking: The stacking process begins with the largest Sec. # on the bottom. The pieces are then stacked in reverse order finishing with Sec. 1 on top.

Number Your Papers:

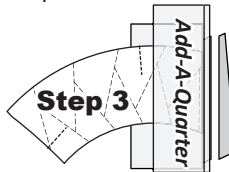
Number your papers #1 to #8 if you are using more than one color group. Use fabric swatches to help keep you organized.



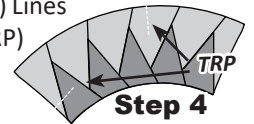
Step 2: Position the first piece of fabric for Sec. 1 *wrong-side-up* on your table. Lift the foundation paper, slide the fabric under Sec. 1 and glue to the backside of the paper. Repeat Steps 1 and 2 for each foundation unit.



Step 3: Place the fold template over the top of Sec. 1. Line the edge up with the solid black line marked Line 1. Fold the paper back over the top of the fold template. Place the *Add-A-Quarter* ruler next to the folded back section lip-side down and trim the fabric with your rotary cutter.

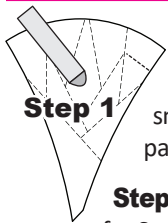


Step 4: Continue add the fabric pieces to the foundation papers. When the paper piecing is complete, re-set your stitch length at 2.5 and sew the (TRP) Lines on each Foundation Unit. After the (TRP) Lines are sewn, the threads are trimmed on the front and backside of each unit.



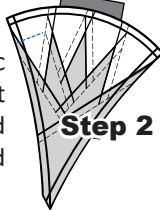
PAPER PIECING: UNIT E1, BAG #E1

NOTE - Tracing the Dashed Lines: Optional



Step 1: Find Sec. 1 on the foundation paper. Place a small amount of fabric glue on the *backside* of the paper under Sec. 1.

Step 2: Position the first piece of fabric for Sec. 1 *wrong-side-up* on your table. Lift the foundation paper, slide the fabric under Sec. 1 and glue to the backside of the paper. Repeat Steps 1 and 2 for each foundation unit.

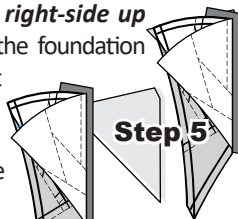


Step 3: Place the fold template over the top of Sec. 1. Line the edge up with the solid black line marked Line 1 and fold the paper back over the top of the fold template.

Step 4: Place the *Add-A-Quarter* ruler next to the folded back section lip-side down and trim the fabric with your rotary cutter.

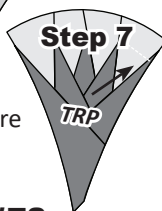


Step 5: Place the fabric piece for Sec. 2, *right-side up* next to the folded back paper then lift the foundation paper and slide the fabric under Sec. 2. Repeat **Steps 3-6** for each foundation paper.



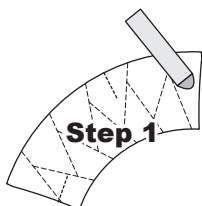
Step 6: Sew Line 1 on each unit before repeating the process.

Step 7: When the paper piecing is complete, re-set your stitch length at 2.5 and sew the (TRP) Lines on each Foundation Unit. After the (TRP) Lines are sewn, the threads are trimmed on the front and backside of each unit.



PAPER PIECING: UNIT E2, BAG #E2

NOTE - Tracing the Dashed Lines: Optional



Step 1: Find Sec. 1 on the foundation paper. Place a small amount of fabric glue on the *backside* of the paper under Sec. 1.

BLOCK ASSEMBLY

Removing Paper: It is recommended that you only remove the foundation paper from each Unit just prior to joining it to another block or block group. Some of the units do not require you to remove the paper until you are ready to assembly the whole quilt, while other papers are removed so you can joined pieces within a block group or complete some curved piecing if it is required to complete a block group. Group E requires additional piecing so you will need to remove the paper.

Registration Lines: If you did not sew your Registration Lines (TRP) you will need to complete them before you remove the paper.

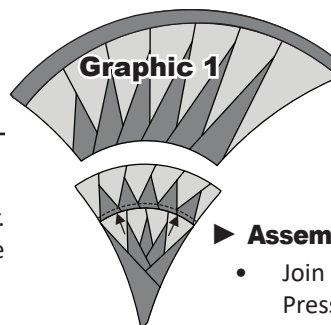
Curved Piecing: Basic curved piecing graphics are not included with the assembly instructions in each booklet. If you are new to curved piecing and need help getting started, there are detailed, step by step curved piecing instructions on Page 11, in the Introduction Booklet.

Pressing: Pressing arrows are shown on the assembly graphics.

Assembly Graphics: These reference the front-side of the quilt, not the foundation papers. Complete the sewing for the Block Groups shown below.

► Assembly Graphics 1:

- Join Unit E2 to Unit E1. Press toward Unit E2.



► Assembly Graphics 2:

- Join Unit E3 to Unit E2. Press toward Unit E3.

