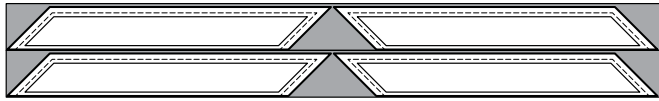


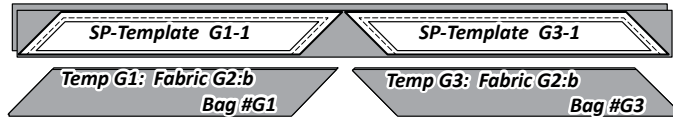
NOTE - Reuse the Templates: The SP-Templates are set aside to cut the strips for the remaining Fabric G2:b, :c, & :d.

► **Fabric G2:b Strip Piecing Temps G1-1 & G3-1**

Cutting Strips: One 6" by 42" strip is needed to complete the cutting for *Strip Piecing Template G1-1 and G3-1* from Fabric G2:b.

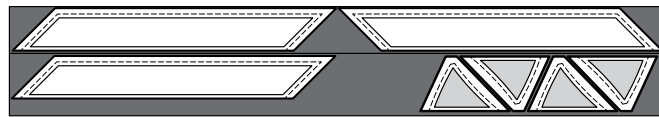


Step 1: Sub-cut (2) 3" by 42" strips from Fabric G2:b Stack the strips facing *right-side-up*. Position (1) each *Strip Piecing Template G1-1 and G3-1* onto your strips and cut (2) pieces with each template. Label the strips and place into their assigned Bag #s.



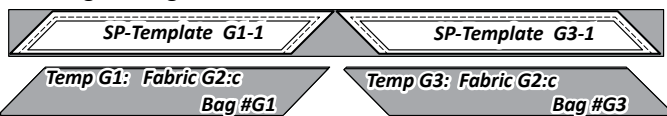
► **Fabric G2:c Strip Piecing Temps G1-1 & G3-1, and Temp G2-2**

Cutting Strips: One 7" by 42" strip is needed to complete the cutting for *Strip Piecing Template G1-1, G3-1 and Temp C2-2* from Fabric G2:c.

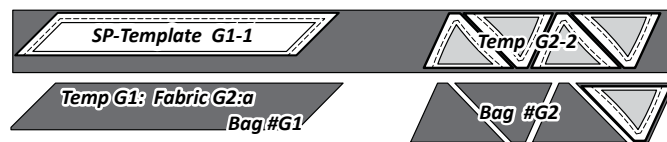


Step 1: One (1) 3" by 42" strip and (1) 4" by 42" strip are sub-cut from Fabric G2:c.

Step 2: Position the 3" strip facing *right-side-up*. Position (1) each *Strip Piecing Template G1-1 and G3-1* onto your strip and cut (1) piece with each template. Label the strips and place into their assigned Bag #.

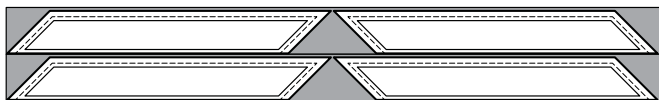


Step 3: Place the 4" strip facing *right-side-up* on your table. *Template G2-2* is used to cut (4) pieces. *Strip Piecing Template G1-1* is used to cut (1) strip. Label the strips and Temp G2-2 and place into their assigned Bag #s.



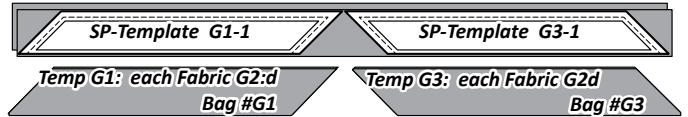
► **Fabric G2:d Strip Piecing Temp G1-1, G3-1**

Cutting Strips: One 6" by 42" strip is needed to complete the cutting for *Strip Piecing Template G1-1 and G3-1* from Fabric G2:d.



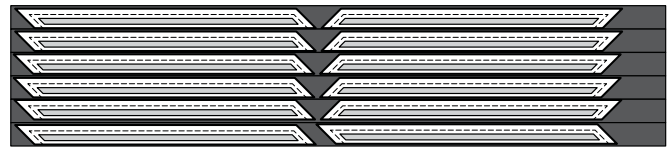
Step 1: Sub-cut (2) 3" by 42" strips from Fabric G2:c. Stack the strips facing *right-side-up*. Position (1) each *Strip Piecing*

Template G1-1 and G3-1 onto your strips. Cut (2) pieces with *Template G1-1*. Cut (1) piece with *Template G3-1*. Label the strips and place into their assigned Bag #s.



► **Fabric G3: Strip Piecing Temp G1-2 & G3-2**

Cutting Strips: One 9" by 42" strip yields enough fabric to complete the cutting for *Strip Piecing Template G1-2 and G3-2* from Fabric G3.

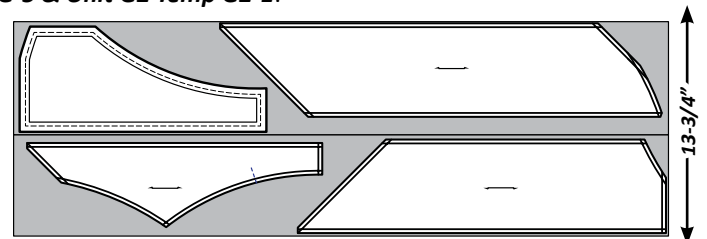


Step 1: Sub-cut (6) 1-1/2" by 42" strips from Fabric G3. Then sub-cut the strips in half to measure 1-1/2" by 21". Stack (7) strips facing *right-side-up* in one group and place with *Template G1-2*. Stack the remaining (5) strips facing *right-side-up* into a second group and place with *Template G3-2*. Label the strips and place into their assigned Bag #s.



► **Fabric G4: T-Temps G-3 - G-5, & Temp G2-1**

Cutting Strips: Four 13-3/4" by 42" strips cut from Fabric G4 are needed to complete the cutting for *T-Templates G-3 through G-5 & Unit G2 Temp G2-1*.



Step 1: Sub-cut each 13-3/4" strip into (1) 7-1/4" strip and (1) 6-1/2" strip for a total of (4) strips for each size.

Step 2: Stack the (4) 7-1/4" by 42" strips facing *right-side-up*. Position both *T-Temp G-1 & Temp G-3* onto your strips. Cut (4) pieces matching the size and shape of each template, then place each template group into their associated Bag #s.

