

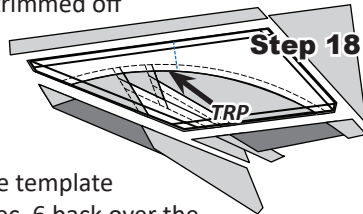
into the seam, lift the paper about 1/2" and hold it slightly above the surface of the machine as you sew on the stitch line. This allows the fabric to move freely as it passes over the feed dogs on your machine.

**Option Two:** Sewing directly on the fabric. The paper is placed next to the feed dogs, fabric facing up. The edge of your quarter-inch presser foot is aligned with the basting stitch to achieve a 1/4" seam allowance.

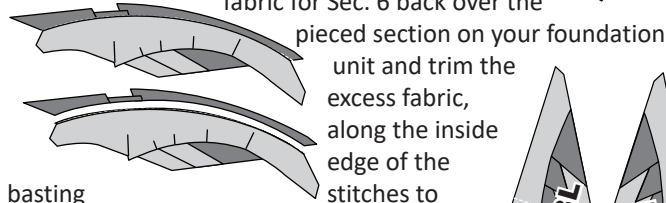
**Step 17:** After the seam is completed, press the fabric on the backside of the paper.

**Transition & Registration Point Lines:** The (TRP) line located along Sec. 6 is now sewn on the foundation papers. Trim the threads on the front and backside of the paper after sewing.

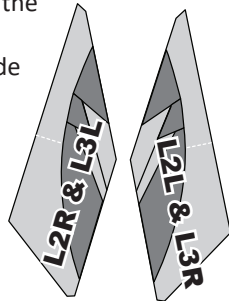
**Step 18:** The excess fabric is trimmed off on the solid line around the perimeter of the foundation paper.



**Trimming Under Sec 6:** To complete the trimming, fold the template fabric for Sec. 6 back over the pieced section on your foundation unit and trim the excess fabric, along the inside edge of the stitches to clean up your seam allowance.



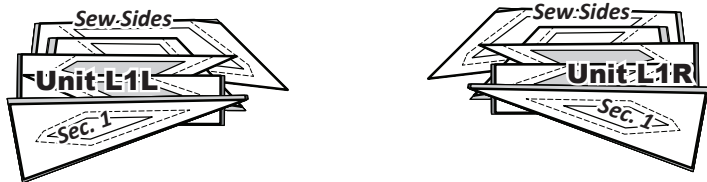
**Step 19:** Re-press, and place the pieces into Bag #L3. Repeat the previous instructions to complete Units L2L & L3R in Bag #L4.



**NOTE - Foundation Paper:** Do not remove the foundation paper at this time.

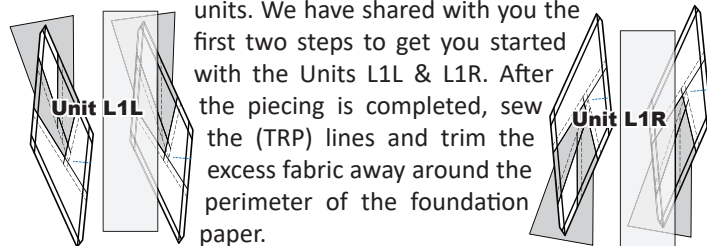
## STACKING: UNIT L1L & L1R BAG #L1 & #L2

**Stacking:** Position the templates and fabric pieces facing *right-side up*, with the *sew-sides* aligned at the top. Sec. 1 does not have a sew side. The pieces are then stacked in reverse order starting with the largest # on the bottom finishing with Sec. 1 on top.



## FOUNDATION PIECING: UNIT L1L & L1R

**Step 1:** The beginning steps for paper piecing are the same for all units. We have shared with you the first two steps to get you started with the Units L1L & L1R. After the piecing is completed, sew the (TRP) lines and trim the excess fabric away around the perimeter of the foundation paper.

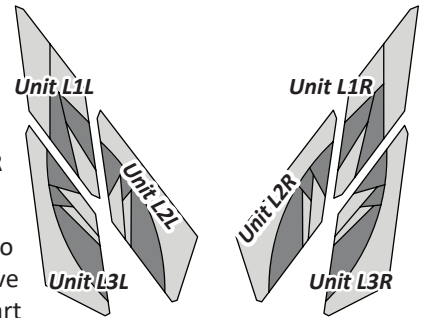


## GROUP L ASSEMBLY

**Removing Paper:** Remove the paper immediately before sewing the blocks together. But, make sure you got all the registration lines sewn before doing so.

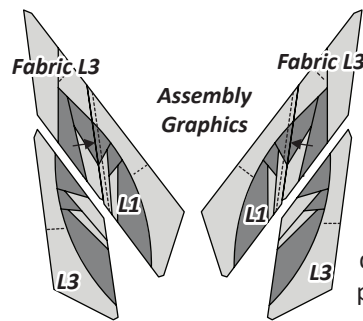
### Finishing the Block

**Step 1:** Unit L1L is joined with Unit L2L and Unit L1R is joined with Unit L2R.



**Step 2:** It is helpful to note that both units have been designed with Smart Corners at both ends. The Smart Corners will match up perfectly as long as you cut them correctly when trimming the papers. Match and secure the end pieces first then glue the raw edges together.

**Step 3:** Complete the sewing on both sides, then press the seams toward Units L2L & L2R. To avoid Y-seams in the assembly process, Units L2L & L2R are **NOT** joined with the L3 Block Groups at this time. The pieces are set aside until all the piecing is completed for the remaining groups used to create your quilt project.



### Quiltster Color Layout:

The fabric references shown on the assembly graphics match the front side of the quilt block, and the color layout provided in Quiltster.

## GROUP B: STAR SHIMMER BORDER INSTRUCTIONS

**Ziploc Storage Bags:** You will need (3) bags to complete the organization for these instructions. Label the bags as follows to stay organized while cutting the Foundation Units and Templates.

- Bag #B1: (8) ea. Unit B1, Papers & associated Templates.
- Bag #B2: (8) ea. Unit B2, Papers & associated Templates.
- Bag #B3: (1) ea. T-TLS #11 and #12.

**Step 4:** Cut out (8) each Unit B1 & B2 [NP 781], and (1) each of the T-Templates and Template Layout Sheets (TLS) on [TP 573 & 574]. The associated Templates and TLS are placed in a temporary bag. After the fabric has been cut the individual Sec. Templates for the (TLS) are placed into assigned Bag #s with their associated foundation papers. See the newsprint graphics that follow for information on how to organize your units and templates into bags. \*Refer back to General Information for Foundation papers and templates for additional instructions on how to prepare your foundation papers templates.

**NOTE - Reusing Templates:** Templates and (TLS) are repositioned on the cut strips to achieve the number of cuts required in the cutting Instructions. Please read carefully to ensure the correct # of pieces are stacked beneath each Template before cutting.