

## GROUP L ASSEMBLY

**Removing Paper:** It is recommended that you only remove the foundation paper from each Unit just prior to joining it to another block or block group. Some of the mixer elements do not require you to remove the paper until you are ready to assembly the whole quilt project, while other mixer elements are joined at this time to complete the block group that you are working on. It is important that you read forward before sewing any of the block groups together.

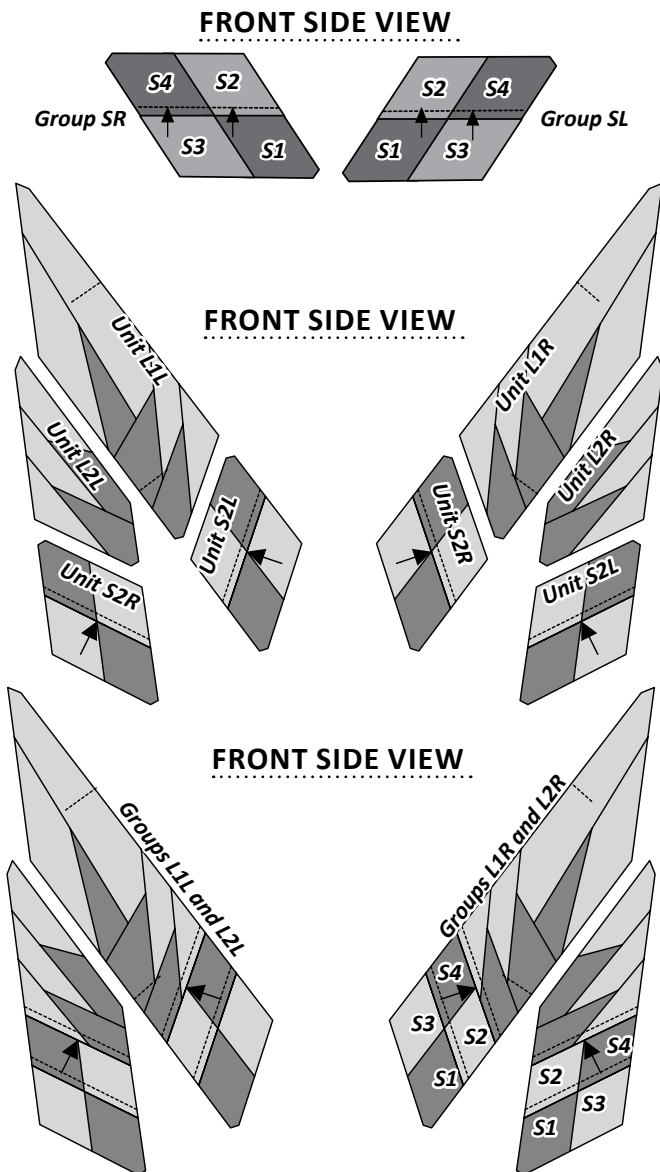
**Registration Lines:** If you did not sew your Registration Lines you will need to complete them before you remove the paper.

### ► Finishing the Block

**Step 1:** Unit L1L is joined with Unit S2L and Unit L2L is joined with Unit S2R.

**Step 2:** Unit L1R is joined with Unit S2R and Unit L2R is joined with Unit S2L.

### ► Assembly Graphics

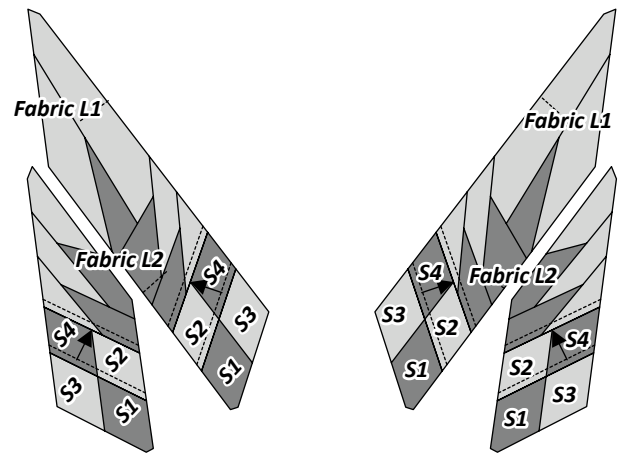


**NOTE - No further Sewing is required at this time.**

**Step 3:** It is helpful to note that both units have been designed with Smart Corners at both ends. The Smart Corners will match up perfectly as long as you cut them correctly when trimming the papers. Match and secure the end pieces first then glue the raw edges together.

**Step 4:** Complete the sewing on both sides, then press the seams toward Units L1L & L2L and Units L1R & L2R. To avoid Y-seams in the assembly process Units in the left and right groups are **NOT** joined at this time. The pieces are set aside until all the piecing is completed for the remaining groups used to create your quilt project.

**Quiltster Color Layout:** The fabric references shown below match the front side of the quilt block, and the color layout provided in Quiltster.



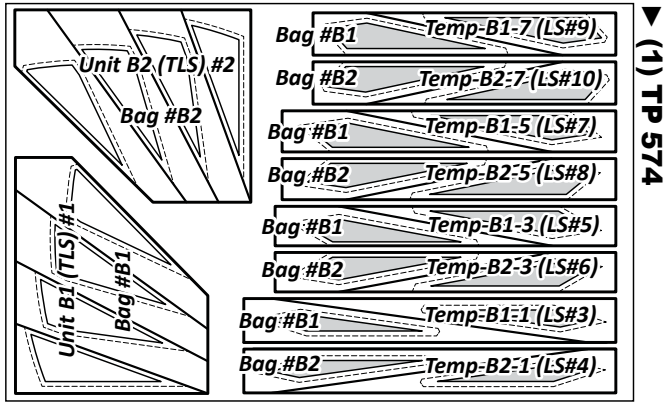
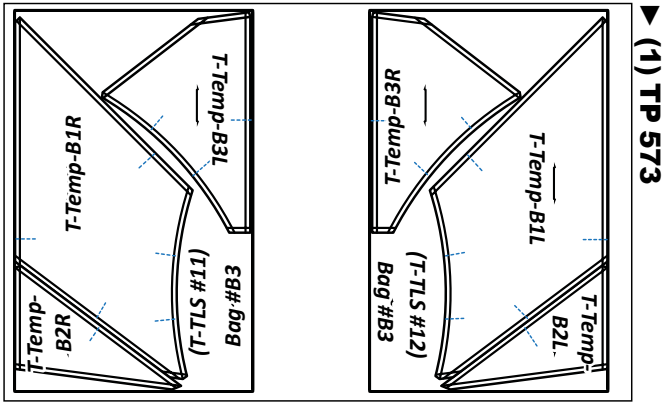
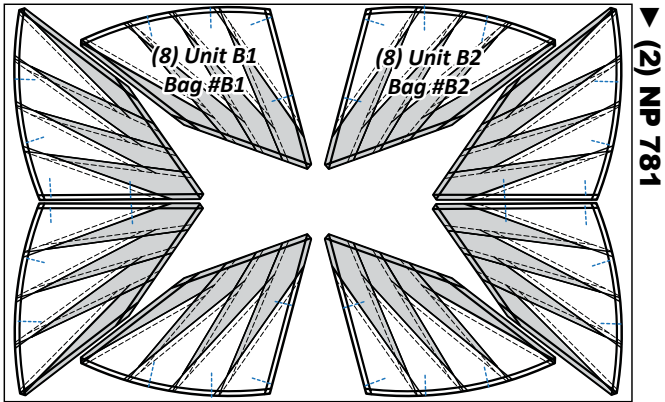
## GROUP B: STAR SHIMMER BORDER INSTRUCTIONS

**Ziploc Storage Bags:** You will need (3) Bags to complete the organization for these instructions. Label the Bags as follows to stay organized while cutting the Foundation Units and Templates.

- Bag #B1: (8) ea. Unit B1, Papers & associated Templates.
- Bag #B2: (8) ea. Unit B2, Papers & associated Templates.
- Bag #B3: (1) ea. T-TLS #11 and #12.

**Step 1:** Cut out (8) each Unit B1 & B2 [NP 781], and (1) each of the T-Templates and Template Layout Sheets (TLS) on [TP 573 & 574]. The associated Templates and TLS are placed in a temporary bag. After the fabric has been cut the individual Sec. Templates for the (TLS) are placed into assigned Bag #s with their associated foundation papers. See the newsprint graphics that follow for information on how to organize your units and templates into bags. \*Refer back to General Information for Foundation papers and templates for additional instructions on how to prepare your foundation papers templates.

**NOTE - Reusing Templates:** Templates and (TLS) are repositioned on the cut strips to achieve the number of cuts required in the cutting Instructions. Please read carefully to ensure the correct # of pieces are stacked beneath each Template before cutting.



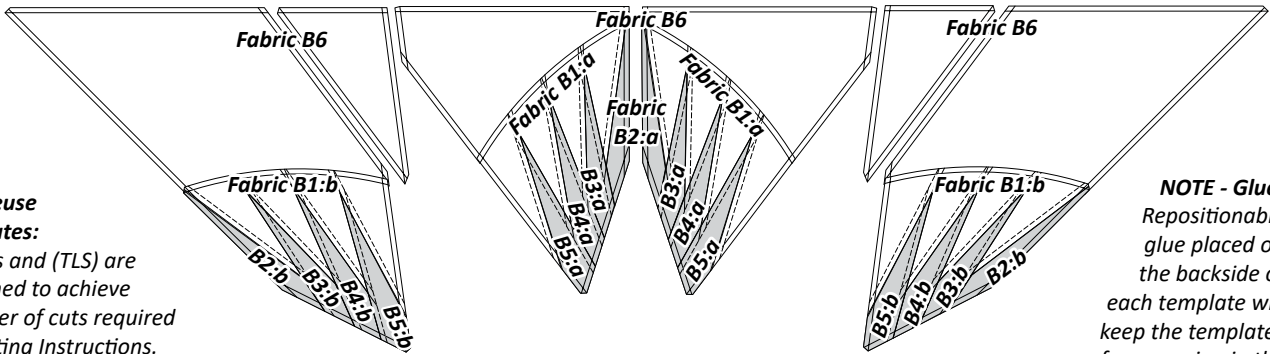
**Fabric Information:**

The *Unit Chart* that follows includes yardage, fabric numbers, and a reference to which fabrics go with the Templates and (TLS) to complete **Units B1 & B2**. The color layout, shown below, gives a visual reference to where the fabrics are located on each unit.

<b>Units B1 &amp; B2: Make (8) ea. Left &amp; Right Units</b>		
GROUP-B FABRIC #	YDS INCH	ASSIGNED COLORS
Fabric B1:a Unit B1 & B2, (TLS) #1 & #2	5/8 yd or (21")	Fabric Swatch
Fabric B1:b Unit B1 & B2, (TLS) #1 & #2	5/8 yd or (21")	Fabric Swatch
Fabric B2:a Unit B1 & B2, (TLS) #3 & #4	1/4 yd or (5")	Fabric Swatch
Fabric B2:b Unit B1 & B2, (TLS) #3 & #4	1/4 yd or (5")	Fabric Swatch
Fabric B3:a Unit B1 & B2, (TLS) #5 & #6	1/4 yd or (5")	Fabric Swatch
Fabric B3:b Unit B1 & B2, (TLS) #5 & #6	1/4 yd or (5")	Fabric Swatch
Fabric B4:a Unit B1 & B2, (TLS) #7 & #8	1/4 yd or (5")	Fabric Swatch
Fabric B4:b Unit B1 & B2, (TLS) #7 & #8	1/4 yd or (5")	Fabric Swatch
Fabric B5:a Unit B1 & B2, (TLS) #9 & #10	1/4 yd or (5")	Fabric Swatch
Fabric B5:b Unit B1 & B2, (TLS) #9 & #10	1/4 yd or (5")	Fabric Swatch
Fabric B6 T-Temp B1R-B3R & B1L- B3L	1-1/2 yds or (52")	Fabric Swatch

**Fabric Color Layout**

**NOTE - Backside Graphic:** The color layout shown matches the printed side of the paper, and the backside of the quilt.



**NOTE - Reuse of Templates:** Templates and (TLS) are repositioned to achieve the number of cuts required in the cutting Instructions. Please read carefully to ensure the correct # of pieces are stacked beneath each Template before cutting.

**NOTE - Glue:** Repositionable glue placed on the backside of each template will keep the templates from moving in the cutting process.