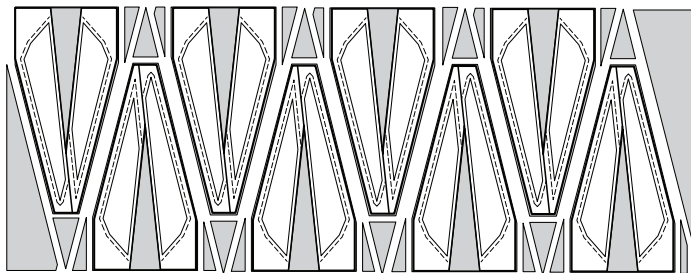
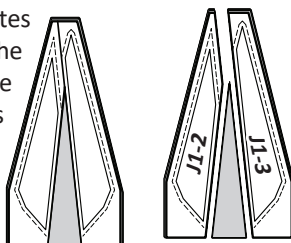


Step 2: *Unit J1 (TLS #1)* is placed onto the strip as shown. Cut (8) pieces, matching the size and shape of the Layout Sheet, repositioning the (TLS) as needed for each cut.



Step 3: Stack and position the (8) pieces under the (TLS). Use paper clips to clip the section templates to the fabric beneath. Slice through the paper on each cut line to separate the individual sections. Place these pieces with the *Foundation Papers* in Bag #J1.



► **Fabric J2: Temp J1-1, Temp J1-1**

Step 1: Cut and stack (3) 3-1/2" by 42" strips from *Fabric J2*, and stack facing *right-side up* on your cutting table.

Step 2: *Unit J1, Template J1-1* is used to cut (8) pieces, repositioning the template as needed for each cut. Place these pieces in Bag #J1.



► **Fabric J3: (Temp J1-4)**

Step 1: Cut (1) 2-1/2" by 42" strip from *Fabric J3*, and place facing *right-side up* on your cutting table.



Step 2: *Unit J1, Template J1-4* is used to cut (4) pieces, matching the size and shape of the template pairs.



Step 3: Stack and position the (4) pieces under the template. Clip the section templates to the fabric beneath. Slice through the paper on Cut Line 1 to separate the individual sections. Place these pieces with the *Foundation Papers* in Bag #J1.



► **Fabrics J4:a and J4:b (Temp J1-5)**

Step 1: Cut (1) 3" by 42" strip each from *Fabric J4:a* and *J4:b*. Stack the strips on your cutting table facing *right-side up*, placing *Fabric J4:b* on the bottom and *Fabric J4:a* on the top.



Step 2: *Unit J1, Template J1-5* is used to cut (2) pieces, matching the size and shape of the template pairs from each fabric.



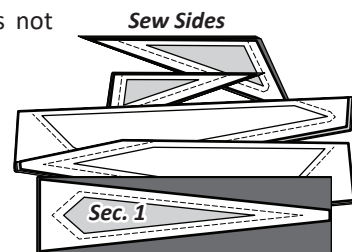
Step 3: Stack and position the (4) pieces under the template. Clip the section templates to the fabric beneath. Slice through the paper on Cut Line 1 to separate the individual sections.



Step 4: Stack the (8) fabric pieces, starting with (4) *Fabric J4:b* on the bottom and (4) *Fabric J4:a* on the top. Place these pieces with the *Foundation Papers* in Bag #J1.

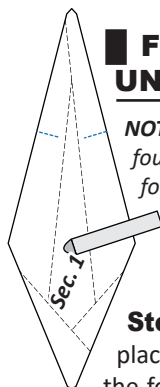
STACKING: UNIT J1, BAG #J1

Position the templates and fabric pieces in numerical order facing *right-side up*, with the *sew-sides* aligned at the top. *Sec. 1* does not have a sew side.

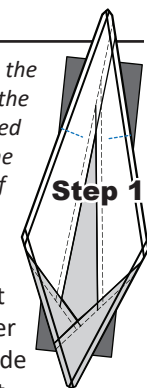


Stacking: The stacking process begins with the largest *Sec. #* on the bottom. The pieces are stacked in reverse order finishing with *Sec. 1* on top.

FOUNDATION PAPER PIECING: UNIT J1

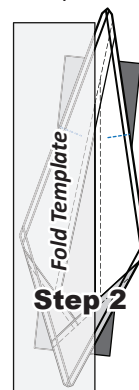


NOTE - Tracing the Dashed Lines: Place the foundation paper onto a light table. Flip the foundation paper over and trace the dashed lines printed on the front side of the foundation paper, onto the backside of the paper.

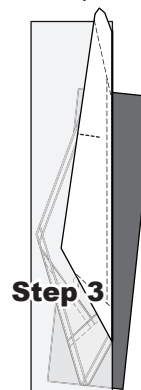


Step 1: The first piece of fabric is placed *wrong-side up* on your table. Lift the foundation paper, slide the fabric under *Sec. 1*. Glue is used to adhere the fabric to the backside of the paper. Repeat **Step 1** for each foundation unit.

Step 2: Place the fold template over the top of *Sec. 1*, lining the edge up with the solid black line marked *Line 1*.



Step 3: Fold the paper back over the top of the fold template.



Step 4: Place the *Add-A-Quarter* ruler next to the folded paper and trim the

