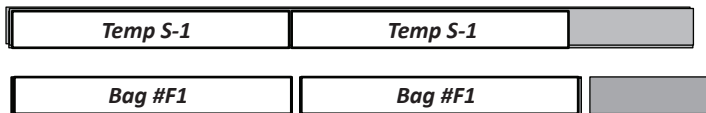


► **Fabric F2:a, F2:b, F2:c & F2:d: Strip Piecing**

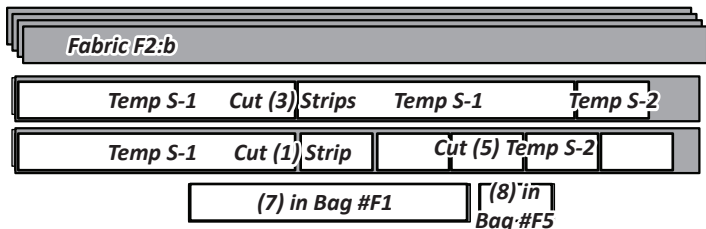
Step 1: Cut (4) 2-1/4" by 42" strips from *Fabric F2:a*.



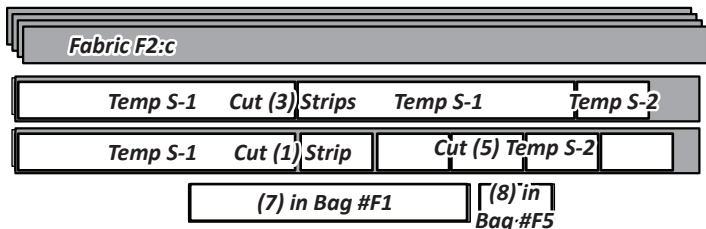
Step 2: Position (2) of *Temp S-1* on the stacked strips. Cut (8) of *Temp S-1* (you will only need 7). Place in Bag #F1.



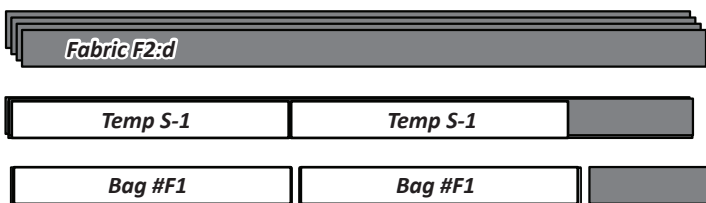
Step 3: Cut (4) 2-1/4" by 42" strips from *Fabric F2:b*. Cut (3) strips with (2) of *Temp S-1* and (1) *Temp S-2*. Cut (1) strip with (7) of *Temp S-1* and (5) *Temp S-2*. Place in the noted bags.



Step 4: Cut (4) 2-1/4" by 42" strips from *Fabric F2:c*. Cut (3) strips with (2) of *Temp S-1* and (1) *Temp S-2*. Cut (1) strip with (7) of *Temp S-1* and (5) *Temp S-2*. Place in the noted bags.



Step 5: Cut (4) 2-1/4" by 42" strips from *Fabric F2:d*. Position (2) of *Temp S-1* on stacked strips. Cut (8) of *Temp S-1* (you will only need 7). Place in Bag #F1.

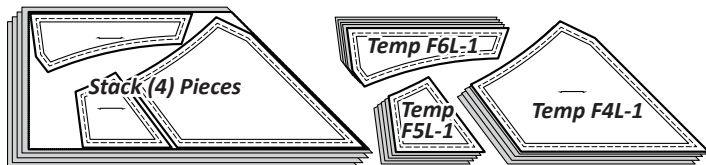


► **Fabric F3: (TLS) #1 & #2**

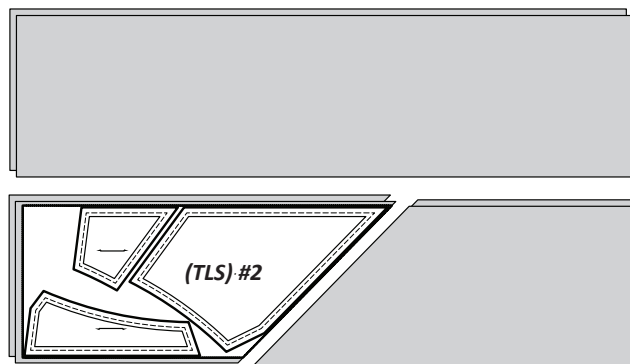
Step 1: Cut (4) 11" by 42" strips from *Fabric F3*. Stack (2) of the strips facing *right-side up*. Set the others aside for Step 3. The *Units F4L, F5L & F6L (TLS) #1* is used to cut (4) pieces the size of the (TLS).



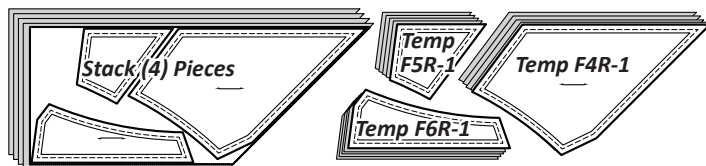
Step 2: Stack the (4) pieces beneath the (TLS). Clip the paper templates to the fabric beneath. Cut on each Cut Line to separate the template pieces. Place the pieces in Bag #F7.



Step 3: Stack the remaining (2) 11" by 42" strips from *Fabric F3* facing *right-side up*. The *Units F4R, F5R & F6R (TLS) #2* is used to cut (4) pieces the size of the (TLS).



Step 4: Stack the (4) pieces beneath the (TLS). Clip the paper templates to the fabric beneath. Cut on each Cut Line to separate the template pieces. Place the pieces in Bag #F8.



► **Fabric F4: (TLS) #3, #4 & #5**

Step 1: Cut (4) 3-1/4" by 42" strips from *Fabric F4*. Stack the (4) strips facing *right-side up*.



Step 2: Position *Units F4L & F4R (TLS) #3, Units F5L & F5R (TLS) #4, and Units F6L & F6R (TLS) #5* on the stacked strips. Cut the (4) strips even with edges of (TLS) #3, #4 & #5 then cut on each Cut Line to separate the template pieces. Place the left pieces in Bag #F7 and right pieces in Bag #F8.

