

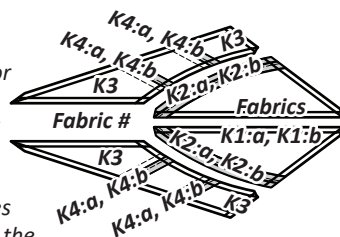
► **Leaf Top Fabric Information:**

The *Unit Chart* that follows includes yardage, fabric numbers, and a reference to which fabrics go with the Templates and (TLS) to complete **Units K1R, K1L, K2R, and K2L**. A color layout, shown below, gives a visual reference to where the fabrics are located on each unit.

Units K1R, K1L, & K2R, K2L Yardage		
Make (8) ea.		
GROUP-K-002 FABRIC #	YARDAGE INCH	ASSIGNED COLOR
Fabric K1:a Temp K1L-1 & K1R-1	1/4 yd or (7")	Fabric Swatch
Fabric K1:b Temp K1L-1 & K1R-1	1/4 yd or (7")	Fabric Swatch
Fabric K2:a Unit K1L & K1R (TLS) #1	1/4 yd or (6-1/2")	Fabric Swatch
Fabric K2:b Unit K1L & K1R (TLS) #1	1/4 yd or (6-1/2")	Fabric Swatch
Fabric K3 Unit K2L & K2R (TLS) #2 & 3	3/4 yd or (26")	Fabric Swatch
Fabric K4:a Unit K2L & K2R (TLS) #4	1/8 yd or (3")	Fabric Swatch
Fabric K4:b Unit K2L & K2R (TLS) #4	1/8 yd or (3")	Fabric Swatch

► **Color Layout**

NOTE - Backside Graphic: The color layout shown matches the printed side of the paper and the backside of the quilt.



NOTE - Stacking strips: *Templates and (TLS) are repositioned on the cut strips to achieve the number of cuts required in the cutting Instructions. Please read carefully to ensure the correct # of pieces are stacked beneath each Template before cutting.

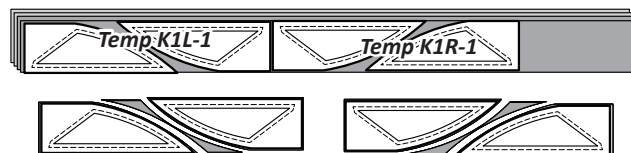
NOTE - Glue: Repositionable glue placed on the backside of each template will keep the templates and (TLS) from moving in the cutting process. After each cut simply reposition the template to the next location.

► **Fabrics K1:a & K1:b, Temp K1R-1 & K1L-1**

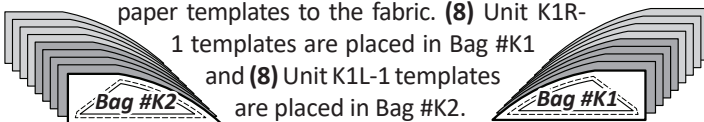
Step 1: Cut (2) 3-1/2" by 42" strips from each Fabric K1:a and K1:b. Stack the strips on your cutting table facing **right-side up**, placing Fabric K1:b on the bottom and Fabric K1:a on the top.



Step 2: Unit K1R, Template K1R-1 and Unit K1L, Template K1L-1 are used to cut (8) pieces each, matching the size and shape of each template, repositioning the templates for each cut.

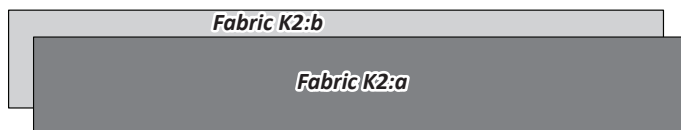


Step 3: The fabric pieces are stacked, starting with Fabric K1:b on the bottom, then K1:a on the top. Paper clips are used to clip the paper templates to the fabric. (8) Unit K1R-1 templates are placed in Bag #K1 and (8) Unit K1L-1 templates are placed in Bag #K2.



► **Fabrics K2:a & K2:b, (TLS) #1**

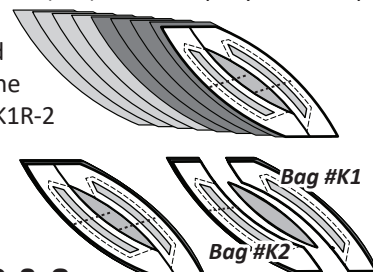
Step 1: Cut (1) 6-1/2" by 42" strip from each Fabric K2:a and K2:b. Stack the strips on your cutting table facing **right-side up**, placing Fabric K2:b on the bottom and Fabric K2:a on the top.



Step 2: Unit K1L & K1R (TLS) #1 is placed onto the strip as shown. Cut (8) pieces, matching the size and shape of the Layout Sheet, repositioning the (TLS) as needed for each cut.



Step 3: Stack the (8) fabric pieces with Fabric K2:b on the bottom, then K2:a on the top. Position the (TLS) on the top layer and clip the Sec. Templates onto the fabric beneath. Cut around each template to separate the individual sections. (8) Unit K1R-2 templates are placed in Bag #K1 and (8) Unit K1L-2 templates are placed in Bag #K2.



► **Fabric K3: (TLS) #2 & 3**

Step 1: Cut (8) 3-1/4" by 42" strips from Fabric K3. Stack on your cutting table facing **right-side up**. Unit K2R (TLS) #3 and K2L (TLS) #2 are placed onto the strips as shown.



Step 2: Cut (8) pieces, matching the size of each (TLS).



Step 3: Clip the Sec. Templates to the fabric beneath and complete the cutting by slicing through the paper and fabric on each Cut Line 1 in numerical order. The Unit K2R templates are placed in Bag #K3 and the Unit K2L templates are placed in Bag #K4.

