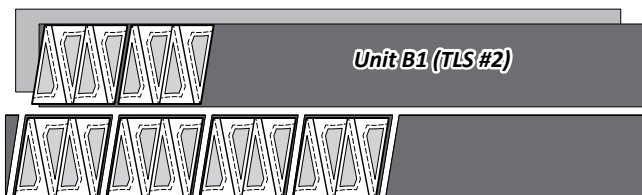


► **Fabric BB2 & BB3: Unit B1 (TLS #2)**

**Step 1:** Cut (1) 5-3/4" by 42" strip from each *Fabric BB2* and *BB3*, and stack facing *right-side up*.

**Step 2:** Place (2) *Unit B1 Template Layout Sheet #2* on strips to cut (4) pieces from each *Fabric BB2* and *BB3*, repositioning the TLSs as shown.



**Step 3:** Re-stack (4) pieces under each Template Layout Sheet. Paper clip each section of the template to the fabric beneath to keep them from moving during the cutting process. Complete cutting by slicing through the paper on each *Cut Line* to separate the individual sections. Sort the cut pieces so *Fabric BB2* is under the *Sec. Templates 2 and 6*. And *Fabric BB3* is under *Sec. Templates 4 and 8*. Clip the stacks and place them with the *Unit B1 Foundation Papers* in *Bag #BB1*.



► **Fabric BB4: T-Temp B1**

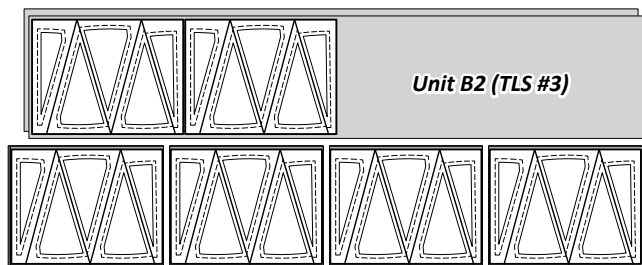
**Step 1:** Cut (1) 7" by 42" strip and position facing *right-side up*. Use *T-Template B1* to cut (8) pieces matching the exact size and shape of the T-Temp. We provided (8) templates, one for each cut, or if you choose you can cut multiple layers using fewer templates. Clip the pieces together with the T-Temp and place in *Bag #BB1*.



► **Fabric BB5: Unit B2 (TLS #3)**

**Step 1:** Cut (2) 8-1/2" by 42" strips from *Fabric BB5*, and stack facing *right-side up*.

**Step 2:** Use *Unit B2 Template Layout Sheet #3* to cut (8) pieces measuring the same size as the layout sheet, repositioning the TLS as shown.



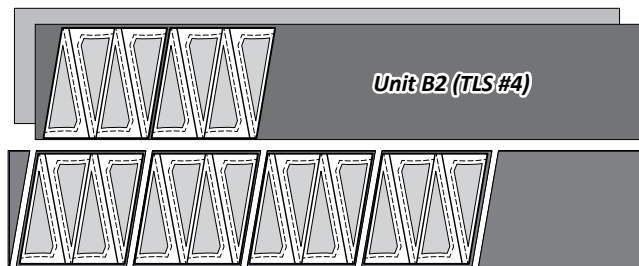
**Step 3:** Re-stack (8) pieces under each TLS. Paper clip each section of the template to the fabric beneath to keep them from moving during the cutting process. Complete the cutting by slicing through the paper on each *Cut Line* to separate the sections. Place pieces with the *Unit B2 Foundation Papers* in *Bag #BB2*.



► **Fabric BB6 & BB7: Unit B2 (TLS) #4**

**Step 1:** Cut (1) 8" by 42" strip each from *Fabric BB6* and *BB7*, and stack facing *right-side up*.

**Step 2:** *Unit B2 (TLS #4)* is used to cut (4) pieces from each fabric measuring the size of the TLS. Reposition the templates as needed.

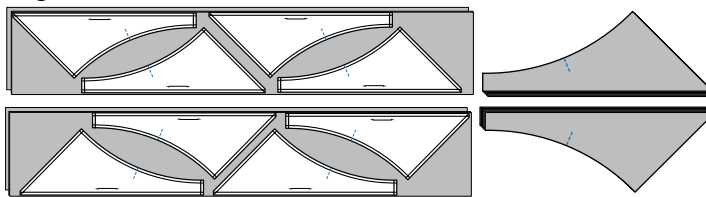


Re-stack (4) pieces under each TLS. Clip each section of the template to the fabric beneath to keep them from moving during the cutting process. Complete cutting by slicing through the paper on each *Cut Line* to separate the sections. Sort the cut pieces so *Fabric BB6* is under the *Sec. Templates 2 and 6*. And *Fabric BB7* is under *Sec. Templates 4 and 8*. Clip the stacks and place them with the *Unit B2 Foundation Papers* in *Bag #BB2*.



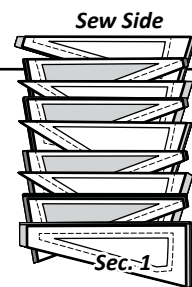
► **Fabric BB8: T-Temp B2L & B2R**

**Step 1:** Cut (2) 7" by 42" strips from *Fabric BB8* and stack facing *right-side up*. *T-Template B2L & B2R* are used to cut (4) pieces matching the exact size and shape of each *T-Temp B2L* and *B2R*. Mark and sew the *TRP Lines* (2.8 stitch length), trim threads on the front and back, then clip and place pieces into *Bag #BB2*. See Page 2 for more information.

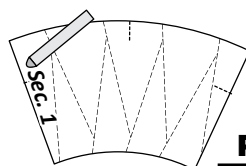


■ **STACKING: UNIT B2, BAG #BB2**

Position the templates and fabric pieces in numerical order facing *right-side up*, with the *sew-sides* aligned at the top. *Sec. 1* does not have a sew side.

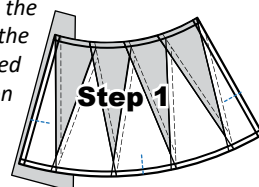


**Stacking:** The stacking process begins with the largest *Sec. #* on the bottom. The pieces are stacked in reverse order finishing with *Sec. 1* on top.



■ **FOUNDATION PAPER PIECING: UNIT B2**

**NOTE - Tracing the Dashed Lines:** Place the foundation paper onto a light table. Flip the foundation paper over and trace the dashed lines printed on the front side of the foundation paper, onto the backside of the paper.



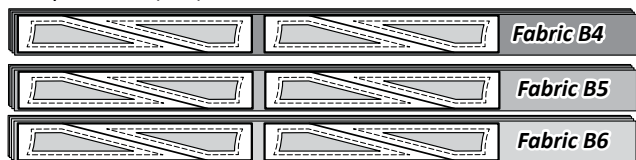
**Step 1:** Find *Sec. 1* on the foundation

**Step 2:** Stack (8) pieces beneath each (TLS). Clip the sections to the fabric beneath on each (TLS). Cutting is completed by slicing through the paper on each **Cut Line** in numerical order to separate the individual sections. Place these pieces into Bag #B1.

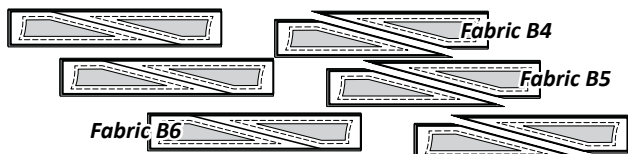


► **Fabric B4, B5, B6: Unit B (TLS) #2**

**Step 1:** Cut and stack (4) 2-3/4" by 42" strips from EACH Fabric B4, B5 & B6. Sort and stack the strips by color into (3) groups facing **right-side up**. **Units B1 (TLS #2)** is used to cut (8) pieces matching the size and shape of the (TLS).

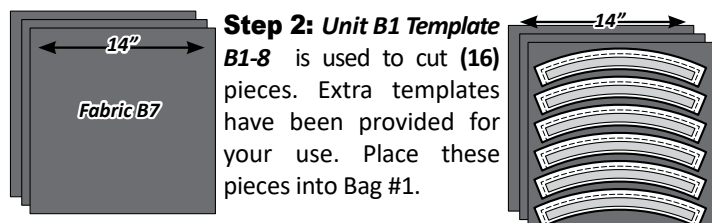


**Step 2:** Stack (8) pieces cut from the same color, beneath each (TLS). Clip the sections to the fabric beneath on each TLS. Cutting is completed by slicing through the paper on each **Cut Line** in numerical order. Place these pieces into Bag #B1.



► **Fabric B7: Template B1-8**

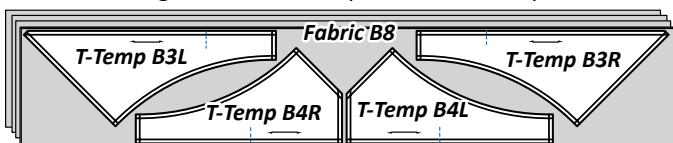
**Step 1:** Cut and stack (1) 13-1/2" by 42" strip from Fabric B7 facing **right-side up**. Cross cut the strip into (3) 14" by 13-1/2" sections.



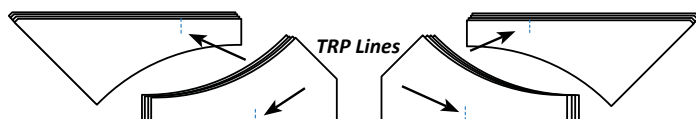
**Step 2:** **Unit B1 Template B1-8** is used to cut (16) pieces. Extra templates have been provided for your use. Place these pieces into Bag #1.

► **Fabric B8: T-Temp B3L, B3R, B4L, B4R**

**Step 1:** Cut and stack (4) 7-1/2" by 42" strips from Fabric B8 facing **right-side up**. **T-Template B3L, B3R, B4L & B4R** are used to cut (4) pieces, matching the size and shape of each T-Template.

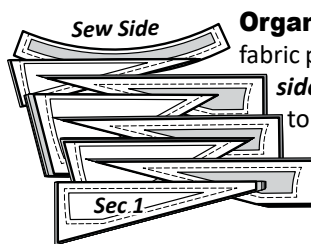


**Step 2:** Cut away the excess fabric around each template. Since you only have (1) T-Template of each, you will need to mark your TRP lines using any of the methods described on Page 2, then sew the TRP lines on using a minimum stitch length of 2.5 to 2.8. Then place the pieces in Bag #B2.



**STACKING: UNIT B1, BAG #B1**

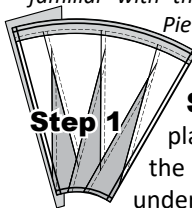
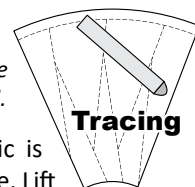
**Organization:** Stack the templates and fabric pieces in numerical order facing **right-side up** with the **sew-side** aligned at the top.



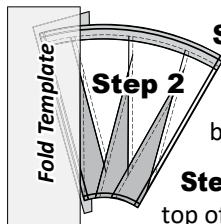
**Stacking:** The stacking process begins with the largest Sec. # on the bottom. The pieces are stacked in reverse order finishing with Sec. 1 on top.

**FOUNDATION PAPER PIECING: UNIT B1L**

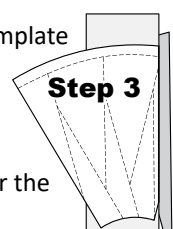
**NOTE - Tracing the Dashed Lines:** Once you are familiar with the process for Foundation Paper Piecing, tracing the backside of the foundation paper become optional.



**Step 1:** The first piece of fabric is placed **wrong-side up** on your table. Lift the foundation paper, slide the fabric under Sec. 1. Glue is used to adhere the fabric to the backside of the paper. Repeat Step 1 for each foundation unit.

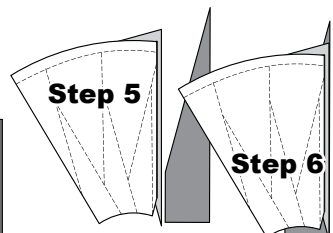


**Step 2:** Place the fold template over the top of Sec. 1 Line the edge up with the solid black line marked Line 1.

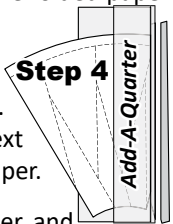


**Step 3:** Fold the paper back over the top of the fold template.

**Step 4:** Place the **Add-A-Quarter** ruler next to the folded paper and trim the fabric with your rotary cutter.

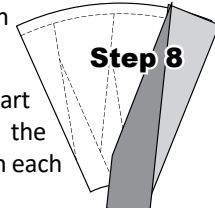


**Step 5:** Place the fabric piece for Sec. 2, **right-side up** next to the folded back paper.

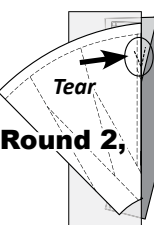


**Step 6:** Lift the paper, and slide the fabric under Sec. 1, line the sew-side up with the trimmed seam allowance. Repeat **Steps 1-6** for each foundation paper before moving onto Step 7.

**Step 7:** Sew on Line 1. The stitches should start and stop about 1/8" past the beginning and the end of each stitch line. Complete the sewing on each unit before moving onto the next step.



**Step 8:** Loosen the glue under Sec 1, then press the fabric on the backside of each paper.



**Round 2,** Position the fold template over the top of Sec' 1 and 2, lining the edge up with Line 2.

Fold the paper back and tear the paper along the stitches on Line 1. Stop tearing when you hit the fold template.

Place the **Add-A-Quarter** ruler next to the folded paper and trim the fabric with your rotary cutter. Repeat the previous Steps 5-8 when adding the pieces to Sec's 3-7.

