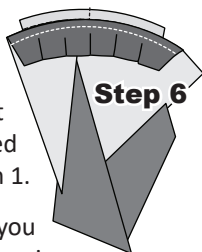
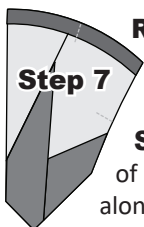


Step 6: Once the strip is in place, the fabric is pressed with steam along the edges. This helps flatten the fabric along the seam area. We have provided you with two different sewing options on how to complete the curved piecing. For accuracy I normally choose Option 1.



Option 1: The paper is flipped over so you are sewing, paper-side-up, and a curved seam is completed by stitching on Sew Line 5. If you use choose Option 1, be a little cautious about how you handle your paper, otherwise you may end up with tiny puckers. To avoid the pucker, hold the paper just off the surface of the sewing machine when stitching on the sew line. This allows the fabric to feed evenly between the presser foot and the feed dogs. Flip the paper over, check your seam to make sure you did not sew any puckers into the curve seam. If it looks good, press the fabric open to cover Sec. 5 on your paper.

Option 2: The curved seam is completed when stitching a 1/4" seam allowance, by lining the edge of your quarter-inch foot up with the basting line. (Fabric-Side-Up). This technique is very much the same as sewing a normal curved seam. After the seam is sewn, flip the paper over and check for accuracy. Your stitching line should match up with the sew line labeled as Sew Line 5 on the front side of the foundation paper.

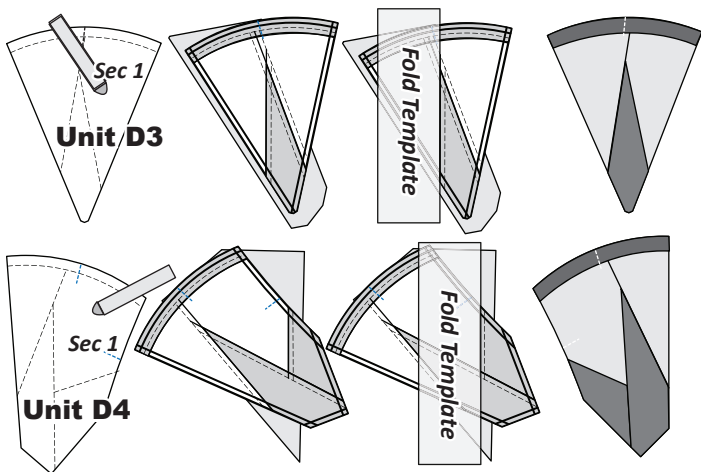


Registration Lines (TRP): Before you complete the final trimming, you need to sew the (TRP) lines using a 2.8 stitch length.

Step 7: Trim the excess fabric off around the edge of the paper, on the exterior line. Don't forget to trim along the curved edge!

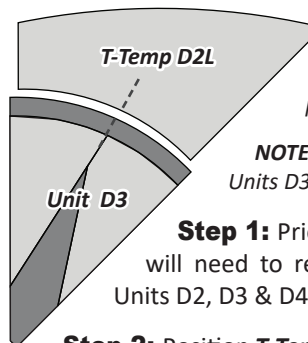
FOUNDATION PAPER PIECING: UNITS D3 AND D4, BAG #D2

Units D3 & D4: A few steps to get you started with the paper piecing are provided below for Units D3 & D4. **Unit D3 may have a "Repress Seam" on Seam 2. Ignore this. It should be removed from the papers because the seam can't be repressed after the curved paper piecing is complete.**



Step 1: After the paper piecing is completed, sew the (TRP) Lines and complete the trimming.

TRADITIONAL CURVED PIECING

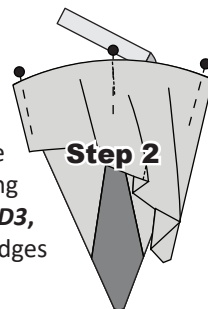


NOTE - Machine Settings: Set your machine to sew a quarter-inch seam allowance before you begin the curved piecing.

NOTE - Graphics: The graphics were built with Units D3 and T-Template D2L.

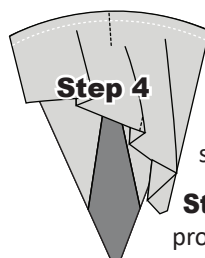
Step 1: Prior to starting the curved piecing you will need to remove the foundation papers from Units D2, D3 & D4.

Step 2: Position **T-Temp D2L**, onto the top of **Unit D3** with **right-sides-together**. Match and pin the (TRP) Lines, then the corners at both ends. Glue both ends where the corners match, then glue the edge along the perimeter of the convex curve of **Unit D3**, quickly shape, and match the curved edges together before the glue dries.



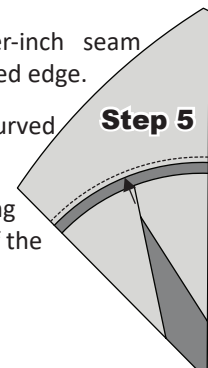
Step 3: Position the pieces at your machine with **T-Temp D2L** on top, next to the presser foot. This will result with **Unit D3** on the bottom next to the feed dogs.

NOTE - Purple Thang: The Purple Thang works great as a third finger to help hold the pieces together when sewing the curves. It can be used to smooth out pleats and hold the edges together.



Step 4: Sew a quarter-inch seam allowance along the curved edge.

Step 5: Press the curved seams towards the T-Temp.



Step 6: The curved piecing process is repeated for each of the remaining groups.