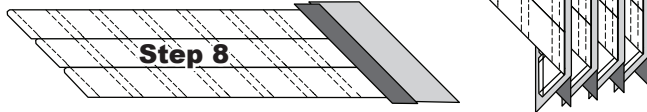


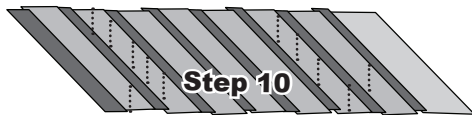
**NOTE - Chain Piecing:** Repeat steps 4-7 for each foundation paper before moving onto Step 8.

**Step 8:** Sew on Line 1. Start and stop the stitches just past the edge of the paper so it is easy to cut the thread ends off when trimming the papers. Complete the sewing on each Unit before moving onto the next step.



**Step 9:** Loosen the glue under Sec. 1. Then press the fabric on the backside of each paper.

**Step 10:** Continue with the foundation paper piecing, repeating the previous steps, as you add each piece to the foundation paper.

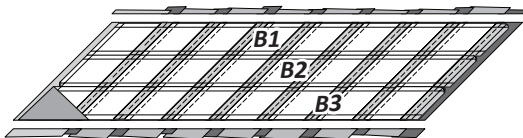


### ► Sewing the RP Lines

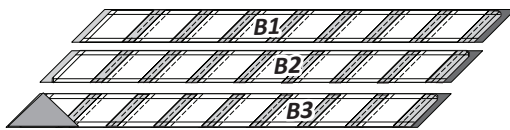
When you are done, flip the foundation papers over and complete the sewing on each of the (TRP) lines as shown above. There are (12) lines on each sheet. Use a basting stitch of 2.8 for easy removal.

## TRIMMING AND CUTTING THE PAPERS

**Step 1:** Place each foundation sheet on your table with the paper side up. Trim the excess fabric and paper off along the long edges of each foundation sheet. There are two solid lines printed around the perimeter of each sheet. The outside line is the trim line.

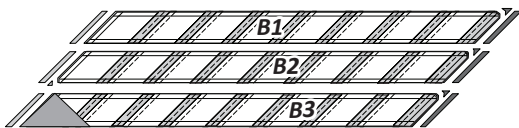


**Step 2:** Find the two lines referred to as **Part 2 Cut Line 1 & Part 2 Cut Line 2**. These are your cutting lines. Using your ruler and rotary cutter, cut each line to separate the three rows.

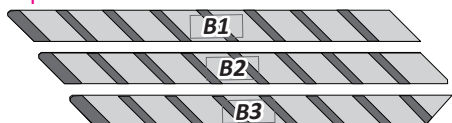


**NOTE - Make sure before you cut, you are cutting on the correct lines. If you mis-cut these lines you will end up making the borders over.**

**Step 3:** Next trim the edges off both ends, then trim off the tips to complete the cutting for all the smart corners. On Unit B3, cut away the triangle at the end as well.



**Step 4:** Clip the (3) Units B1, B2, & B3 together and set aside. Repeat Steps 1-4 for each sheet.

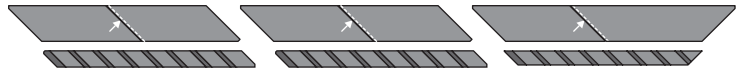


## ASSEMBLE THE BORDER

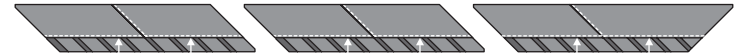
**Step 1:** Arrange the border Units on your design wall as shown. Graphics show the front side of the units from this point forward.



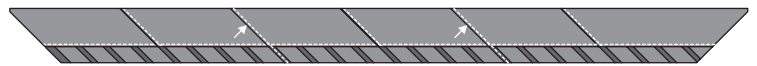
**Step 2:** Sew Together (2) T-Template C5 groups and (1) T-Template C4/C5 group as shown. Press the seams in the direction shown by the arrows.



**Step 3:** Join Units B1, B2, and B3 to the T-Templates as shown below. Match the TRP Lines. Complete this step on each side.



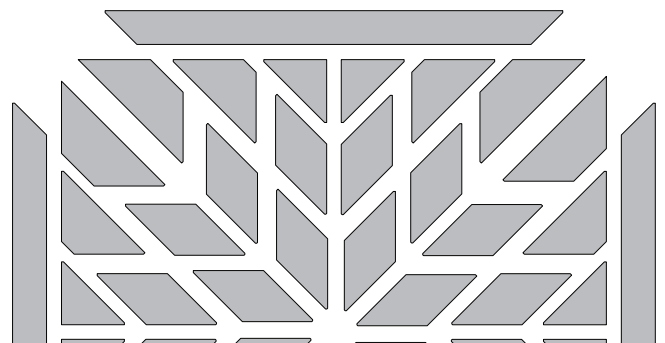
**Step 4:** Sew together the final seams between each of the (3) border sections on each side. The final seams should be pressed in the direction of the arrows shown below.



## ASSEMBLE THE STAR

**Step 1: Illustration 1:** Arrange the Units on your Design Board. For the cover quilt, we place all the light points facing toward the center. Other samples have been made with all the light points pointing out, and some have a combination. It's up to you. You can arrange your blocks however you like! Quiltster gives you the ability to explore different options if you want to see what it looks like before you decide. Graphics that follow show the front side of the quilt. Remove the papers from all your units at this time.

### ► Illustration 1: Layout



**NOTE - Correction:** On the first printing of Fractured Star, Unit B3 was not designed with the cutaway angle to make it fit the border, so we had instructions on how to cut it off. That has been corrected, but the new pattern instructions still had directions on how to trim that way. Please ignore those directions as yours is trimmed in the trimming part. Follow the highlight instructions on Page 9 here, instead.