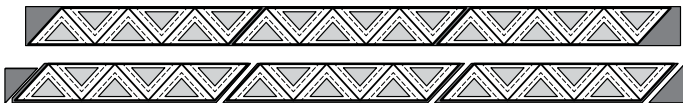


► **Fabric B6:a, B6:b, B6:c: (TLS #7)**

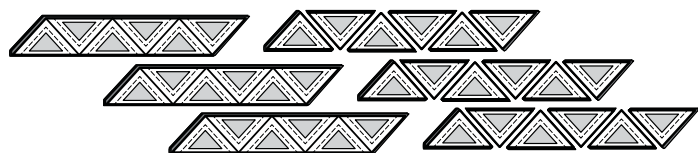
Step 1: Cut (3) 2-1/2" by 42" strips from each *Fabric B6:a, B6:b, and B6:c*. Create (3) stacks of strips by color facing **right-side up**.



Step 2: Use *Unit B2 & B3 Template B-1 Layout Sheet #7* to cut (8) pieces matching the size and shape of the (TLS) from each color, repositioning as shown.



Step 3: Re-stack (8) pieces under each (TLS). Cutting is completed by slicing through the paper on each *Cut Line* in numerical order to separate the individual sections.



Step 4: The template pieces are divide into (2) sets, then placed into the assigned bag #.

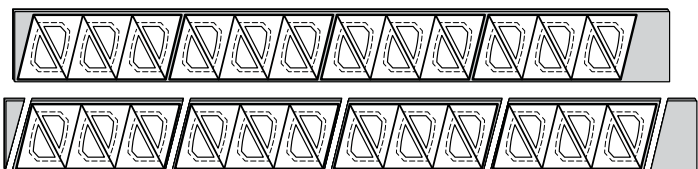


► **Fabric B7: (TLS #8 & #9)**

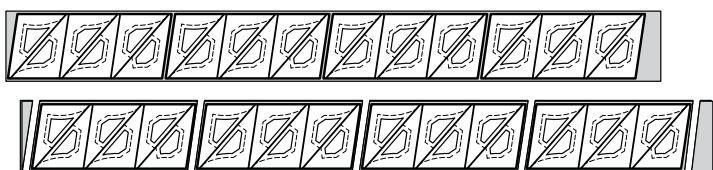
Step 1: Cut (2) 13-1/2" by 42" strips, then subcut these into (6) 4-1/2" by 42" strips facing **right-side up**. Restack the strips with (4) strips in one stack and (2) strips in the other.



Step 2: Position the (2) *Unit B2 Template Layout Sheet #8* onto the stack with (4) strips. Cut (16) pieces matching the size and shape of the (TLS).

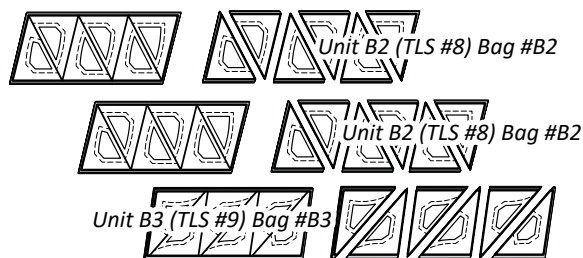


Step 3: Position *Unit B3 Template Layout Sheet #9* onto the stack with (2) strips. Cut (8) pieces matching the size and shape of the (TLS).



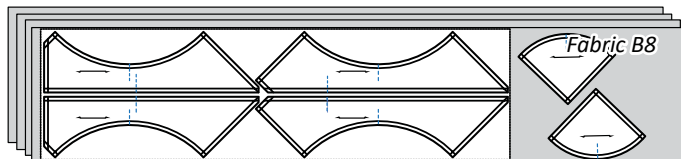
Step 4: Clip (8) fabric pieces beneath each of the (3) Template Layout Sheets, (2) (TLS #8) and (1) (TLS #9). Cutting is completed by slicing through the paper on each *Cut Line* in numerical order

to separate the individual sections. Then place the **Unit B2** fabric pieces into Bag #B2. Place the **Unit B3** fabric pieces into Bag #B3.

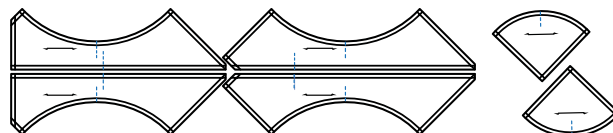


► **Fabric B8: T-Temp B4R, B4L, B5R, B5L, B6**

Step 1: Cut (4) 8-1/2" by 42" strips and stack facing **right-side up**.

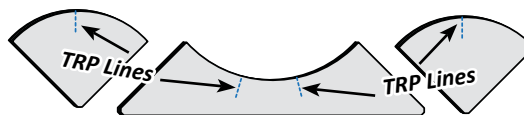


Step 2: Use *T-Templates B4R, B4L, B5R, B5L, & B6* to cut (4) pieces matching the *T-Temp Layout Sheet for B4R, B4L, B5R and B5L*, and (8) matching the size and shape of of *T-Template B6*. Repositionable glue and paper clips are used to keep the fabric and templates from moving in the cutting process. Place these templates into Bag #B4.



► **REGISTRATION LINES (TRP)**

The T-Templates in Bags #B1, #B2, and #B3 all have registration lines (marked as dotted lines with a *TRP* label). These must be transferred to your fabric pieces, one templates at a time. Align the edges of the first T-Template with the fabrics beneath so all of the edges are perfectly aligned. A sample showing some of the T-Templates with the *TRP* lines is shown below.



Set your stitch length at 2.8 on your machine and sew the (*TRP*) Lines on each piece of fabric, using your T-Templates as a guide to mark the location either through needle-punching the entire stack at once, or using a marking pencil to mark the individual pieces. After the *TRP* lines are marked on the fabrics, the *TRP* lines are stitched onto each fabric pieces.

The excess threads on the front and backside of each fabric are trimmed. Clip the templates and fabric pieces back together, then place the pieces into their assigned bags. Repeat this process for all the *TRP* lines printed on the T-Templates.

