

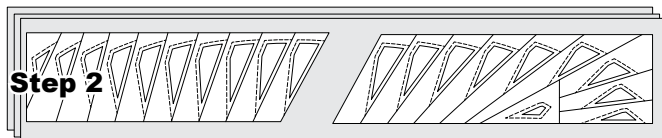
CUTTING INSTRUCTIONS

► Cutting Instructions: Bag #1: Unit FL-1 Template Layout Sheets

Step 1: Cut (4) 6-3/4" x 42" strips from Background Fabric A1 and place with both *Unit FL-1 Background Template Layout Sheets* from Bag #1. Put the remaining fabric in Bag #2 for now.

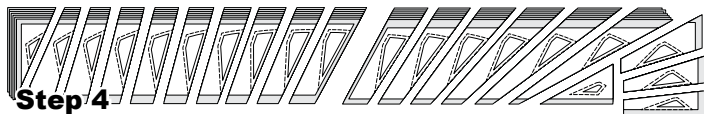


Step 2: Stack the (4) strips *right-side-up* and position both *Unit FL-1 Background Template Layout Sheets* on to your strips.



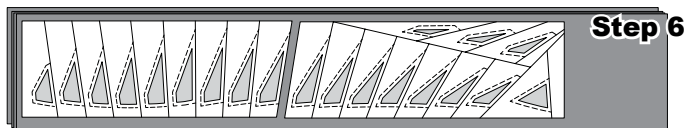
Step 3: Placing a large paper clip along the edge of the fabric on each template section before you cut on the Cut Lines will keep the paper from moving while cutting and keep the templates and fabrics together for each section after cutting is done.

Step 4: Starting with the *Unit FL-1 Background Template Layout Sheet #1*, cut on Cut Line 1 and proceed in order until all the pieces are cut apart. Proceed to the *Unit FL-1 Background Template Layout Sheet #2*, cutting on the Cut Lines in order, until all the pieces are cut apart.



Step 5: Stack the background pieces in numerical order and place back into Bag #1. A large binder clip can be used to keep the sections stacked together.

Step 6: Cut (4) 7-1/2" x 42" strips from Accent Fabric A2 and place with both *Unit FL-1 Accent Template Layout Sheets*. Place the remaining fabric in Bag #2 for now. The fabric strips are stacked *right-side-up* with the layout sheet positioned on the strips as shown. Paper clips are placed along the edge of the fabric on each section to hold the paper and section together before you begin cutting.

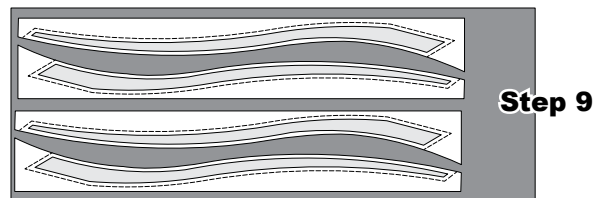


Step 7: Starting with the *Unit FL-1 Accent Template Layout Sheet #1*, cut on Cut Line 1 and proceed in numerical order until all the pieces have been cut apart. Proceed directly into *Unit FL-1 Accent Template Layout Sheet #2* with the cutting until all the pieces have been cut apart.



Step 8: Re-stack the accent pieces in numerical order and place back into Bag #1.

Step 9: Remove the FL-1 Leaf Vein Template and the 3/8 yard cut of Fabric A3. Position the template as shown onto the right-side of the fabric and cut (4) pieces. Only one template was provided so you will need to reposition the template after each cut.

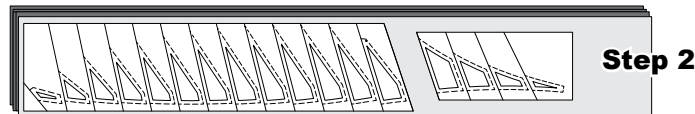


Step 10: Place the pieces back into Bag #1.

► Cutting Instructions: Bag #2: Unit FL-2 Template Layout Sheets

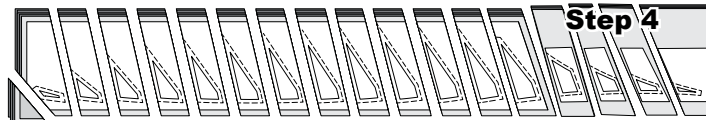
Step 1: Cut (4) 6-3/4" x 42" strips from Background Fabric A1 and place with both *Unit FL-2 Background Template Layout Sheets* from Bag #2.

Step 2: Stack the (4) strips *right-side-up* and position both *Unit FL-2 Background Template Layout Sheets* onto the strips.



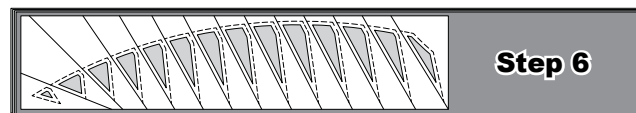
Step 3: Place a large paper clip along the edge of the fabric on each template section to keep the paper and fabrics together for each section during and after cutting.

Step 4: Start cutting on *Cut Line 1*, and proceed, in order, cutting apart *Unit FL-2 Background Template Layout Sheet #1* first, then *Layout Sheet #2* until all of the pieces have been cut apart.



Step 5: Re-stack the background pieces in numerical order and place back into Bag #2. A large binder clip can be used to keep the sections stacked together.

Step 6: Cut (4) 7-1/2" x 42" strips from Accent Fabric A2 and the *Unit FL-2 Accent Template Layout Sheet*. The fabric strips are stacked *right-side-up* with the layout sheet positioned as shown on the strips. Paper clips are placed along the edge of the fabric on each section to hold the paper and section together during and after cutting.



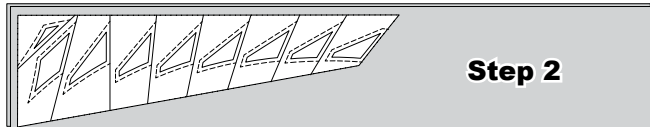
Step 7: Begin cutting on cut on *Cut Line 1*, then proceed in order until all of the pieces have been cut apart. Stack, clip, and place in Bag #2.



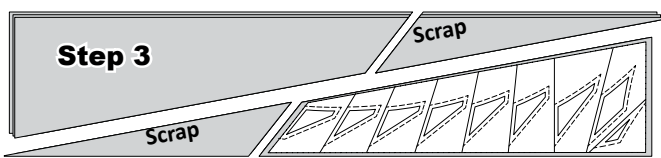
► **Cutting Instructions: Bag #3:
Unit FL-3 Template Layout Sheets**

Step 1: Cut (4) 8" x 42" strips from Background Fabric B1 and place with the *Unit FL-3 Background Template Layout Sheet* from Bag #3. Place the rest in Bag #4 for now.

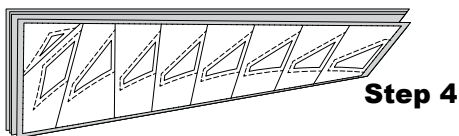
Step 2: Stack the (4) strips *right-side-up* and position the *Unit FL-3 Background Template Layout Sheet* on to the stack as shown.



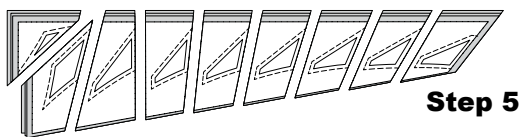
Step 3: Sub-cut (4) fabric pieces to match the size and shape of the layout sheet. Rotate the template layout sheet 180 degrees and reposition it onto the other half of the strips. Cut (4) more pieces.



Step 4: Center the (8) fabric pieces you cut under the template layout sheet as shown.



Step 5: Position the paper clips along the edge of each section. Start cutting on *Cut Line 1*, and proceed in order to *Cut Line 8*.

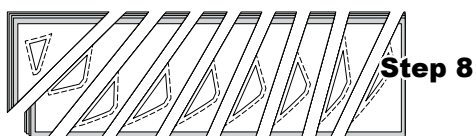


Step 6: Re-stack the background pieces in numerical order and place back into Bag #3.

Step 7: Cut (4) 8" x 42" strips from Accent Fabric B2 and place with the *Unit FL-3 Accent Template Layout Sheet*. Place the rest in Bag #4 for now. Stack the fabric strips *right-side-up*. Position the layout sheet as shown and sub-cut (4) fabric pieces. Move the layout sheet and cut (4) more.



Step 8: Center the (8) fabric pieces under the layout sheet. Paper clip the sections, cut on *Cut Line 1* and proceed to *Cut Line 8*.

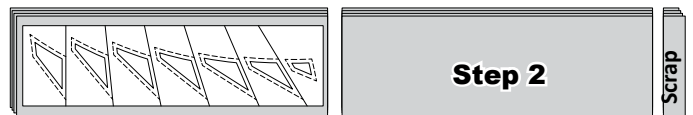


Step 9: Re-stack the accent pieces in numerical order and place back into Bag #3.

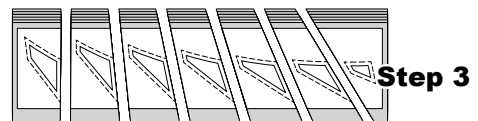
► **Cutting Instructions: Bag #4:
Unit FL-4 Template Layout Sheets**

Step 1: Cut (4) 5-1/2" x 42" strips from Background Fabric B1 and place with *Unit FL-4 Background Template Layout Sheet* from Bag #4.

Step 2: Stack the (4) strips *right-side-up* and position the *Unit FL-4 Background Template Layout Sheet* on to the stack as shown. Sub-cut (4) fabric pieces. Move the template layout sheet to the other half of the strips and cut (4) more pieces.



Step 3: Center the (8) fabric pieces you cut under the template layout sheet. Position the paperclips along the edge of each section. Start cutting on *Cut Line 1*, and proceed, in order to *Cut Line 6*.

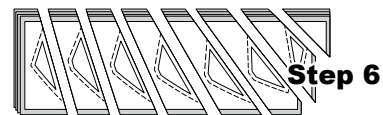


Step 4: Re-stack the pieces and place back into Bag #4.

Step 5: Cut (4) 6-1/2" x 42" strips from Accent Fabric B2 and place with the *Unit FL-4 Accent Template Layout Sheet*. Stack the fabric strips *right-side-up*. Position the layout sheet as shown and sub-cut (4) fabric pieces. Move the template layout sheet to the other half of the strips and cut (4) more pieces.



Step 6: Center the (8) fabric pieces under the layout sheet. Paper clip the sections, cut on *Cut Line 1* and proceed to *Cut Line 7*.



Step 7: Place the pieces back into Bag #4.

► **Cutting Instructions: Bag #5:
Unit FL-5 Template Layout Sheets**

Step 1: Cut (3) 12" x 42" strips from Background Fabric C1 and place with the *Unit FL-5 Background Template Layout Sheet* from Bag #5.

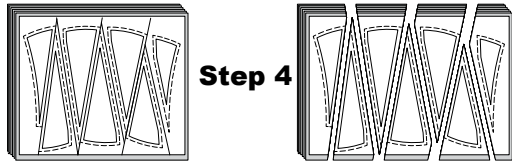
Step 2: Stack the (3) strips *right-side-up* and position the *Unit FL-5 Background Template Layout Sheet* on to the stack as shown.



Step 3: Sub-cut each strip into (3) 13-1/2" by 12" rectangles. Remove one rectangle and place with your scraps.

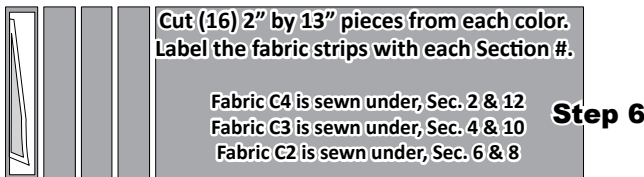


Step 4: Stack the remaining (8) pieces. Position the paper clips along the edge of each section. Start cutting on **Cut Line 1**, and proceed, in order, to **Cut Line 6**.



Step 5: Re-stack the pieces and place back into Bag #5.

Step 6: Cut (3) 13" x 42" strips from the (3) Accent Fabric numbers C2, C3, and C4 and place along with the **FL-5 Spike Template**. Stack the fabric strips **right-side-up** and sub-cut (16) 2" by 13" pieces from each fabric.



Step 7: There are (4) **FL-5 Spike Templates** in the Bag. Clip (1) to your fabrics, sorted by color, and place the pieces back into Bag #5.

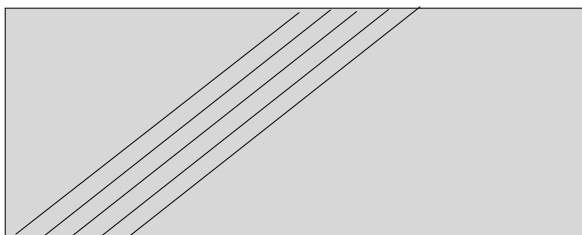
► **Cutting Instructions: Bag #6:
Unit FL-6 Strips**

In Bag #6 cut (6) 2" by 42" strips from each Fabric D1, D2, D3, and D4. A strip piecing process is used to assemble the FL-6 units, so no additional sub-cutting is necessary at this time.

► **Cutting Instructions: Bag #7:
Unit FL-7 Leaf**

In Bag #7, there are (3) fabrics set aside for the Full Leaf. Fabric A4 was placed with the **Leaf Unit FL-7 Accent** pieces. Fabric A5 was placed with the **Leaf Template FL-8 Background** pieces. You will cut these pieces later in the pattern.

Fabric A6 is used for Sec. 2 which, is the vein on the **Leaf Unit FL-7 Accent** pieces. You will need to cut (4) bias strips from Fabric A6 at this time. Press the fabric (Fabric A6) open. Fold the fabric at a 45 degree angle along the bias and cut (4) 1-1/2" by 30" bias strips. Place these strips back in Bag #7 with the (4) Leaf Unit FL-7 Accent pieces.

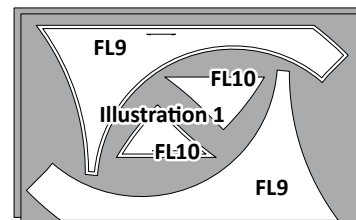
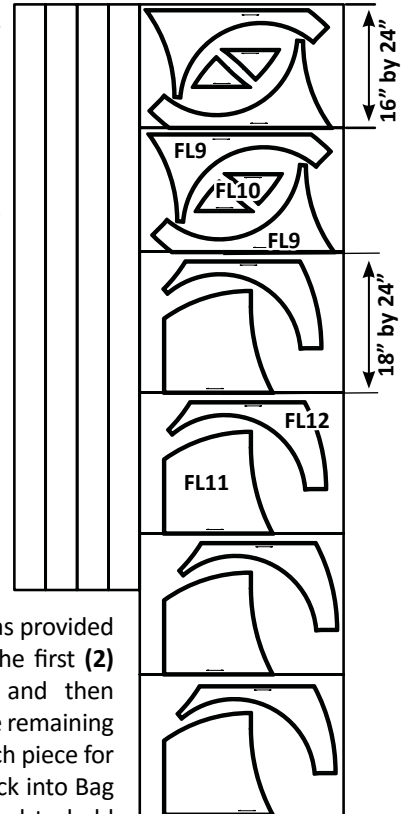


■ **CUTTING INSTRUCTIONS: BAG #8:
TEMPLATES FL-9, FL-10, FL-11, FL-12 AND
BORDER STRIPS**

Step 1: Option 1: If you have selected the same fabric for the Background Templates and outside border, the first step for cutting Fabric E1/F3 is to cut (4) 80" by 4" strips along the selvage length of the fabric and set aside for Border #3.

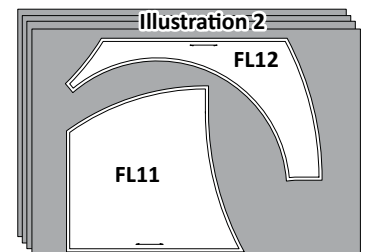
Step 1: Option 2 (Cover Quilt Option): If your Fabric F3 (Outside Border) is a different fabric that Fabric E1 (Main Background), then cut (4) 80" x 4" strips from Fabric F3 along the selvage length of the fabric and set aside for Border #3. The remaining fabric can serve as binding later in the pattern as desired.

Step 2: Cut (2) 16" by 24" pieces across the remaining width of the Fabric E1. Stack the pieces **right-side-up**. Position **Template FL-9** and **Template FL-10** onto your fabric as shown in Illustration 1, below. Only (1) template was provided with these instructions. Cut the first (2) pieces with each template and then rotate the templates to cut the remaining pieces. You will need (4) of each piece for the quilt. Place the pieces back into Bag #8. Flower pins should be used to hold the paper templates in place as you cut around the pieces.



in Illustration 2. Cut (4) pieces using each Template. Place these pieces with **Template FL-11** and **Template FL-12**. Place the pieces back into Bag #8.

Step 3: Cut (4) 18" by 24" pieces across the remaining Fabric E1. Stack the (4) pieces **right-side-up**. Position **Template FL-11** and **Template FL-12** onto your fabric as shown



Step 4: Fabrics F1 and F2 are not used until the end of the pattern (Page 22).

Double Folded Straight Edge Binding: Binding strips are cut across the selvage grain at a width of 2-1/2" wide. Cut enough strips to go around the outer edge of your quilt. The strips are joined together, then pressed in half before sewing them onto the quilt. The joining seams on your strips should be pressed open to prevent the extra bulk when folding the binding over the edge of your quilt. The binding is sewn onto the top-side of the quilt with your machine and hand stitched on the backside once complete.