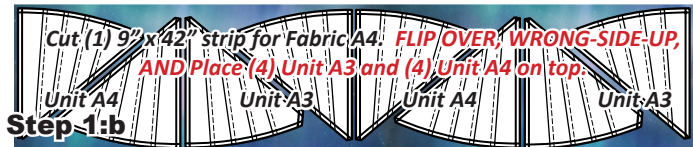
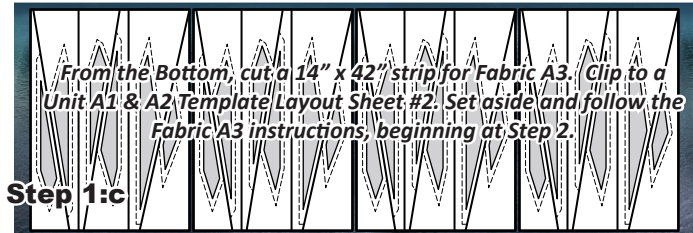


**Step 1:a**



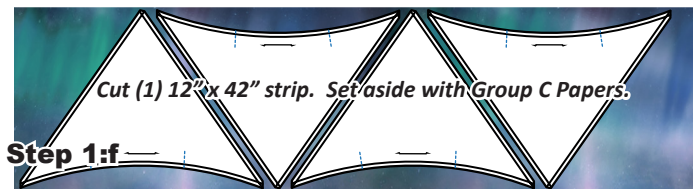
**Step 1:b**

*Leftover Scrap*

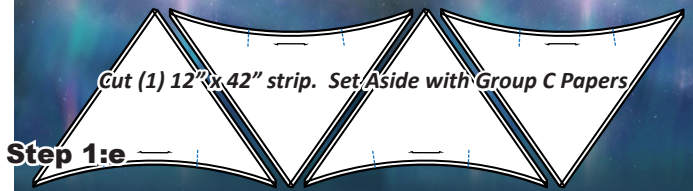


**Step 1:c**

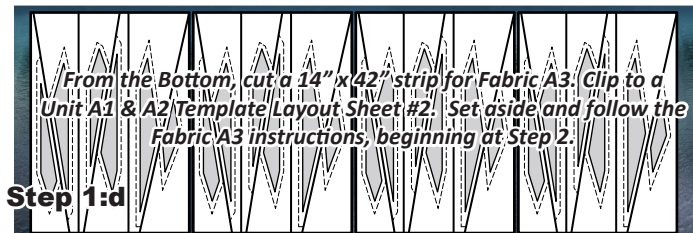
*Leftover Scrap*



**Step 1:f**

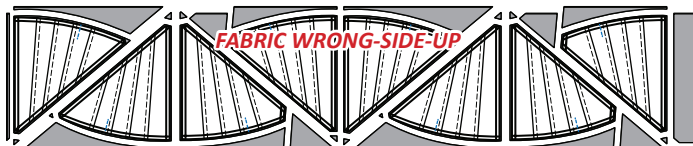


**Step 1:e**

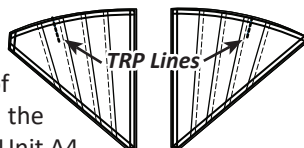


**Step 1:d**

**Step 5:** Once everything is cut apart, take the Unit A3 and A4 pieces to your machine, with the Templates secured to the top with the repositionable glue.



**Step 6:** Set your machine to sew a basting stitch (Stitch Length at least 2.8). Then, sew on each of the TRP Lines to mark these. Place the Unit A3 pieces into Bag #A3 and the Unit A4 pieces into Bag #A4.



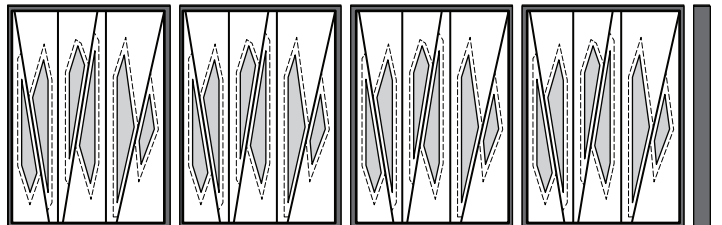
## ► Fabric A3: Units A1 & A2 (TLS #2)

**NOTE - Options 2, 3, and 4:** If you have chosen one of the noted Options, begin with Step 1. If you are doing Option 1 with the McKenna Ryan fabrics, you have cut your strips as part of the Option 1 instructions noted previously. So, start with Step 2.

**Step 1:** Cut and stack (2) 14" by 42" strips facing *right-side-up*.

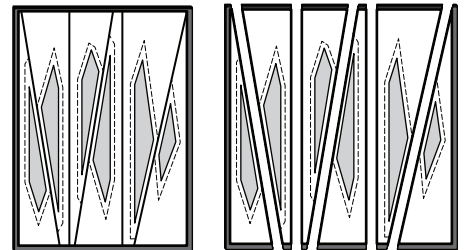


**Step 2:** The *Unit A1 and A2 Template Layout Sheets #2* is used to cut (8) pieces, (4) from each strip of fabric, matching the size and shape of the (TLS).



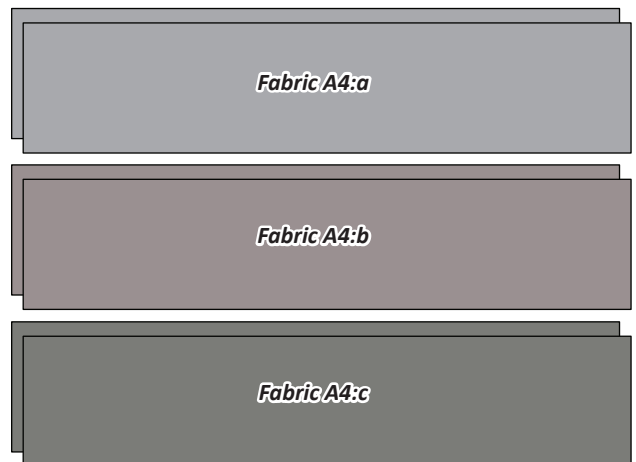
**Step 3:** Stack the (8) pieces, with the TLS on top. Paper clip the individual sections to the fabric beneath. The cutting is completed by slicing through the paper on each cut line in numerical order to separate the individual sections.

**Step 4:** Check each Template and place the fabric pieces cut from Fabric A3 and labeled with Temp A1 into Bag #A1. Place the fabric stacks labeled with Temp A2 into Bag #A2.

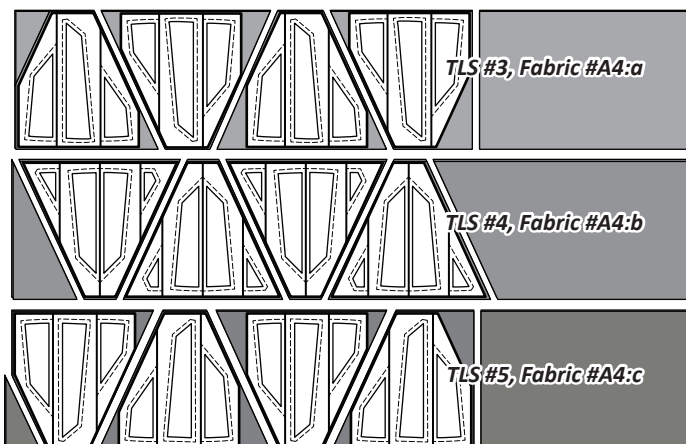


## ► Option 2: Fabrics A4:a, A4:b, and A4:c: (TLS #3, #4, and #5)

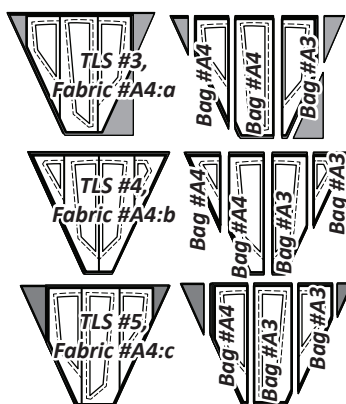
**Step 1:** Cut and stack (2) 9" by 42" strips facing *right-side-up* into (3) different stacks, by Fabric, from Fabrics A4:a, A4:b, and A4:c.



**Step 2:** The *Unit A3 and A4 Template Layout Sheets #3, #4, and #5* are used to cut (8) pieces matching the size and shape of the TLSs from each set of (2) fabrics as shown below.



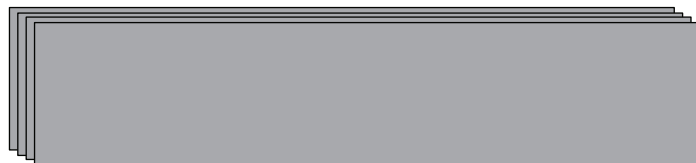
**Step 3:** Stack the (8) pieces cut from each TLS, with the TLS on top. Paper clip the individual sections to the fabric beneath. The cutting is completed by slicing through the paper on each cut line in numerical order to separate the individual sections.



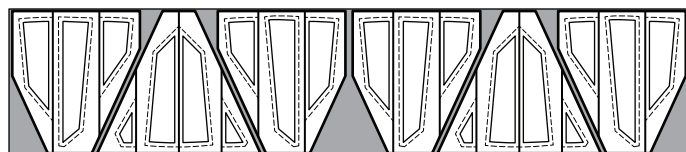
**Step 4:** Check each Template and place the fabric pieces labeled with Temp A3 into Bag #A3. Place the fabric stacks labeled with Temp A4 into Bag #A4. Each stack of fabric should have the same color, throughout the stack.

► **Option 3: Fabrics A4, Pieced Option (TLS #3, #4, and #5)**

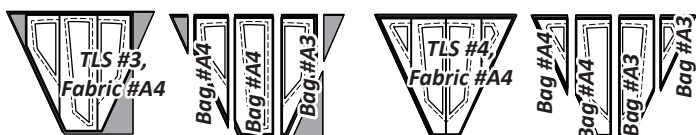
**Step 1:** Cut and stack (4) 9" by 42" strips facing *right-side-up*.



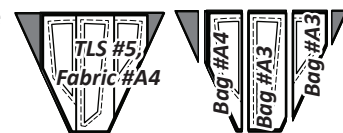
**Step 2:** The *Unit A3 and A4 Template Layout Sheets #3, #4, and #5* are used to cut (8) pieces matching the size and shape of each (TLS) from the stack of fabrics.



**Step 3:** Restack the fabrics so there are (8) pieces, with each TLS on top. Paper clip the individual sections to the fabric beneath. The cutting is completed by slicing through the paper on each cut line in numerical order to separate the individual sections.



**Step 4:** Check each Template and place the fabric pieces labeled with Temp A3 into Bag #A3. Place the fabric stacks labeled with Temp A4 into Bag #A4.

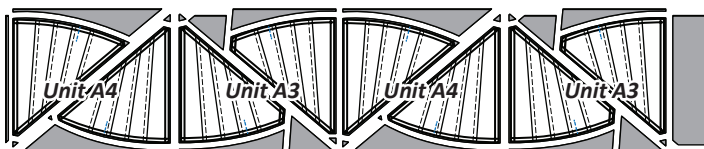


► **Option 4: Fabrics A4, Non-Pieced Option (Foundation Papers Unit A3 and A4)**

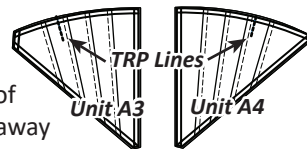
**Step 1:** Cut and stack (2) 9" by 42" strips facing *WRONG-SIDE-UP*.



**Step 2:** Use *Units A3 and A4* as cutting templates and cut (8) pieces, (4) of each unit from each strip of fabric, matching the size and shape of the each of the Units. It is helpful to use repositionable glue for this step so you can keep the Units from moving during the cutting process.



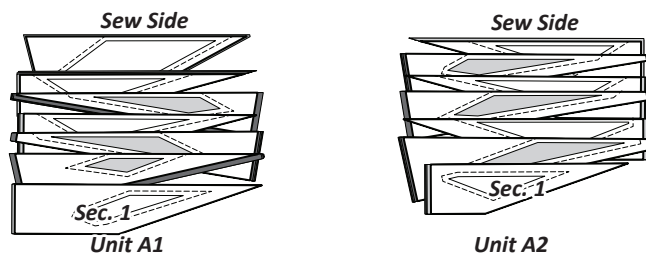
**Step 3:** Set your machine to sew a basting stitch (Stitch Length at least 2.8). Then, sew on each of the TRP Lines to mark these. Trim away the excess thread. Then, place the Unit A3 pieces into Bag #A3 and the Unit A4 pieces into Bag #A4.



■ **STACKING: UNITS A1 AND A2**

Position the templates and fabric pieces in numerical order facing *right-side up*, with the *sew-sides* aligned at the top. Sec. 1 does not have a sew side.

**Stacking:** The stacking process begins with the largest Sec. # on the bottom. The pieces are stacked in reverse order finishing with Sec. 1 on top.



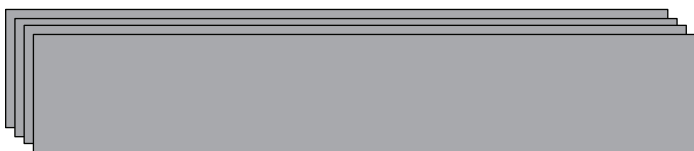
■ **FOUNDATION PAPER PIECING: UNITS A1 AND A2, BAGS #A1 AND #A2**

**NOTE - Tracing the Dashed Lines:** Place the foundation paper onto a light table. Flip the foundation paper over and trace the dashed lines printed on the front side of the foundation paper, onto the backside of the paper.

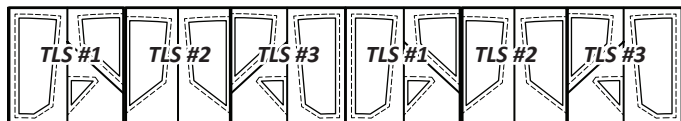


► **Option 2: Fabric CC2, Pieced Option (TLS #1, #2, and #3)**

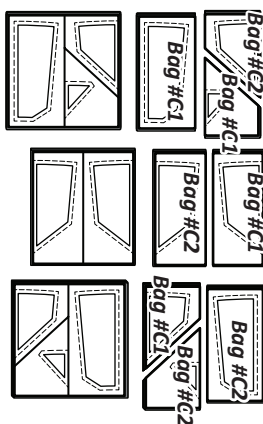
**Step 1:** Cut and stack (4) 7-1/2" by 42" strips from Fabric CC2, facing *right-side-up*.



**Step 2:** The *Unit C1 and C2 Template Layout Sheets #1, #2, and #3* are used to cut (8) pieces matching the size and shape of each (TLS) from the stack of fabrics. You will need to reposition the TLS to make the second group of cuts.



**Step 3:** Stack the (8) pieces cut from each TLS, with the TLS on top. Paper clip the individual sections to the fabric beneath. The cutting is completed by slicing through the paper on each cut line in numerical order to separate the individual sections.

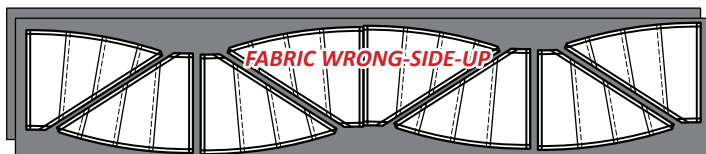


**Step 4:** Check each Template and place the fabric pieces labeled with Temp C1 into Bag #C1. Place the fabric stacks labeled with Temp C2 into Bag #C2. Each stack of fabric should have the same color, throughout the stack.

► **Option 3: Fabric CC2, Non-Pieced Option (Foundation Papers Unit C1 and C2)**

**Step 1:** Cut and stack (2) 9" by 42" strips from **Fabric CC2** facing *wrong-side-up*.

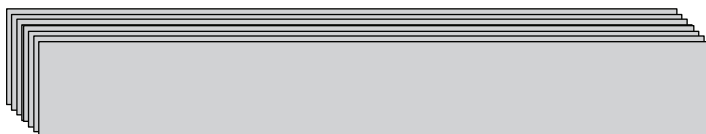
**Step 2:** Use *Units C1 and C2* as cutting templates and cut (8) pieces, (4) of each unit from each strip of fabric, matching the size and shape of the each of the Units. It is helpful to use repositionable glue for this step so you can keep the Units from moving during the cutting process.



**Step 3:** Place the Unit C1 pieces into Bag #C1 and the Unit C2 pieces into Bag #C2.

► **Fabric CC3 (TLS #4 & #5)**

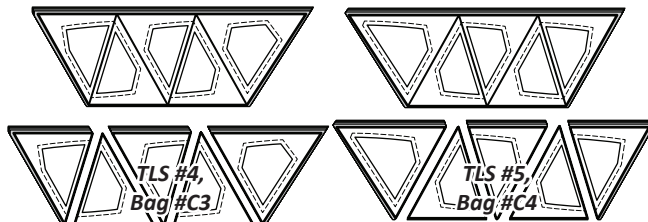
**Step 1:** Cut and stack (8) 6" by 42" strips facing *right-side-up*.



**Step 2:** The *Unit C3 and C4 Template Layout Sheets #4 and #5* are used to cut (8) pieces, (1) of each TLS from each strip of fabric, matching the size and shape of the (TLS).



**Step 3:** Stack the (8) pieces, with the TLS on top. Paper clip the individual sections to the fabric beneath. The cutting is completed by slicing through the paper on each cut line in numerical order to separate the individual sections.



**Step 4:** Check each Template and place the fabric pieces cut labeled with Temp C3 into Bag #C3. Place the fabric stacks labeled with Temp C4 into Bag #C4.

► **Fabrics CC4:a (TLS #6)**

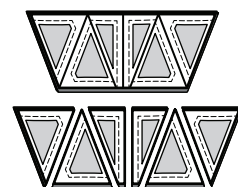
**Step 1:** Cut and stack (2) 4-3/4" by 42" strips facing *right-side-up*.



**Step 2:** The *Unit C3 & C4 TLS #6* is used to cut (8) pieces, (4) from each strip of fabric, matching the size and shape of the (TLS).



**Step 3:** Stack the (8) pieces, with the TLS on top. Paper clip the individual sections to the fabric beneath. The cutting is completed by slicing through the paper on each cut line in numerical order to separate the individual sections.



**Step 4:** Check each Template and place the fabric pieces labeled with Temp C3 into Bag #C3. Place the fabric stacks labeled with Temp C4 into Bag #C4.

► **Fabrics CC4:b (TLS #7)**

**Step 1:** Cut and stack (2) 4-3/4" by 42" strips facing *right-side-up*.



**Step 2:** The *Unit C3 & C4 TLS #7* is used to cut (8) pieces, (4) from each strip of fabric, matching the size and shape of the (TLS).



**Step 3:** Stack the (8) pieces, with the TLS on top. Paper clip the individual sections to the fabric

