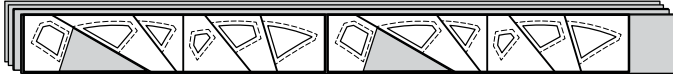


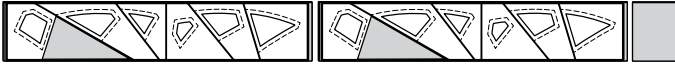
CUTTING INSTRUCTIONS UNIT C3 & C4: DIAMOND BORDER

Fabric A-C1: Unit C3 & C4 (TLS #C1)

Step 1: Cut (1) 11-1/4" x 42" strip, then subcut and stack (3) 3-3/4" by 42" strips facing *right-side-up* from Fabric A-C1.



Step 2: The *Unit C3 & C4 Template Layout Sheets #C1* is used to cut (6) pieces, matching the size and shape of the (TLS).



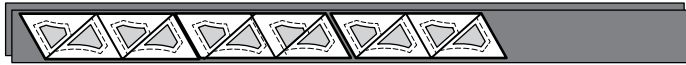
Step 3: The (6) pieces are stacked beneath the Template Layout Sheet. Paper clip the individual sections to the fabric beneath. The cutting is completed by slicing through the paper on each cut line in numerical order to separate the individual sections.



Step 4: Place the C3 templates and fabric pieces with the Unit C3 foundation papers, and the C4 templates and fabric pieces with the Unit C4 foundation papers in Bag #C3.

Fabric A-C2: Unit C3 & C4 (TLS #C2)

Step 1: Cut (1) 6" x 42" strip, then subcut and stack (2) 3" by 42" strips facing *right-side-up* from Fabric A-C2.



Step 2: The *Unit C3 & C4 Template Layout Sheets #C2* is used to cut (6) pieces, matching the size and shape of the (TLS).



Step 3: The (6) pieces are stacked beneath the Template Layout Sheet. Paper clip the individual sections to the fabric beneath. The cutting is completed by slicing through the paper on each cut line in numerical order to separate the individual sections.



Step 4: Place the C3 templates and fabric pieces with the Unit C3 foundation papers, and the C4 templates and fabric pieces with the Unit C4 foundation papers in Bag #C3.

Fabric A-C3: (T-Template C-1 & C-2)

Step 1: Cut (1) 3-1/4" by 42" strip from Fabric A-C3. Position the facing *right-side-up* on your cutting table. Six (6) fabric pieces are cut matching the size of each *T-Template C-1 & C-2*. Reposition the templates for each cut. *Note: A small amount of re-positional fabric glue is placed on the backside of each template. The backside of each template is then placed against the right-side of the fabric.*



Step 2: Place *T-Template C1* with Unit C3 and *T-Template C2* with Unit C4 in Bag #C3.

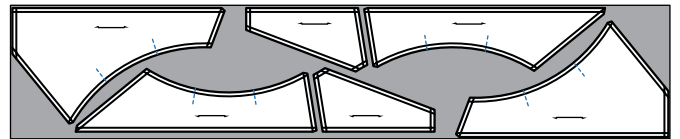


CUTTING INSTRUCTIONS (T-TEMP D1-D4) BLOCK BACKGROUND

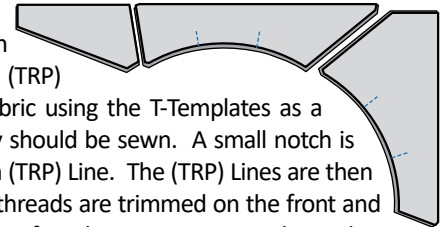
Yardage and strip cutting instructions for T-Templates D1-D4 are provided on Pages 6 & 7, in the *Instruction Booklet*. In the *Instruction Booklet*, it states to place the strips in Bag #D4, the set aside for the template cutting instruction in this booklet. If you have not completed these cutting instructions please return to your *Instruction Booklet*, Page 7, and complete the cutting for Fabric D1 and D2 at this time.

Fabric D1: (T-Template D-1, D-2, & D-3)

Step 1: Remove the (7) strips cut from in Bag #D4 cut from Fabric D1. Stack the strips on your cutting board facing *right-side-up*. Position each T-Templates as shown on to your strip. T-Template D1, D2, & D3 are used to cut (2) pieces matching the size and shape of each template. If you can not cut through (7) layers of Fabric, divide the strips into smaller stacks. *Note: A small amount of repositionable fabric glue is placed on the backside of each template. The backside of the template is then placed against the right-side of the fabric.* The T-Templates are repositioned for each cut.



Step 2: Set your stitch length at 2.8 and sew the (TRP) Lines on each piece of fabric using the T-Templates as a guide to mark where they should be sewn. A small notch is cut into the paper at each (TRP) Line. The (TRP) Lines are then sewn at each notch. The threads are trimmed on the front and backside of each template after the sewing is complete. Place these pieces back into Bag #D4.

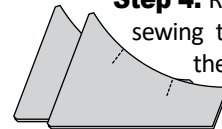


Fabric D2: (T-Template D-4)

Step 3: Remove the (3) strips in Bag #D4 cut from Fabric D2. Stack the strips on your cutting board facing *right-side-up*. T-Template D4 is used to cut (14) pieces matching the size and shape of your T-Template as shown on your strip. One strip yields (5) pieces. You will need to reposition the templates for each cut.



Step 4: Repeat the instructions in Step 2 above when sewing the (TRP) Lines. The threads are trimmed on the front and backside of each template after the sewing is complete. Place these pieces back into Bag #D4.



BACK TO BOOKLET ONE

Refer back to Booklet One for a complete set of instructions on how to finish Unit A, B2, C3, & C4. Stacking and paper piecing instructions begin on Page 8. Assembly Instructions for each Block Group are found on Pages 18 & 19.