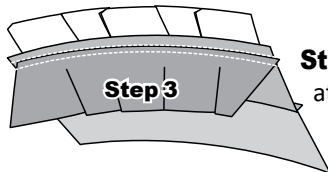
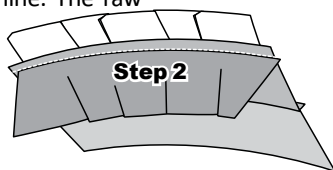
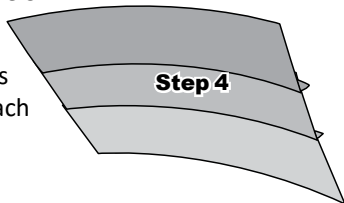


Step 2: Start with Strip #13, Fabric S7 *wrong-side-up* so the curved edge butts up against the basting line. The raw edges of your strip are matched and glued along the edge of Basting Line 3. Repeat the steps for each foundation paper.



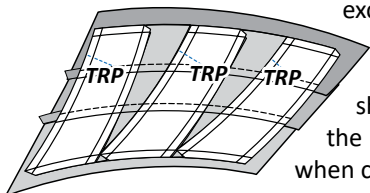
Step 3: Flip the papers *printed-side-up* at your sewing machine with the Sec. 2 fabric next to the feed-dogs. Sew on Sew Line 3.

Step 4: Repeat this step for each foundation paper. Then press the fabric on the *backside* of each foundation paper.



► Part 2: Trimming and Cutting the Papers

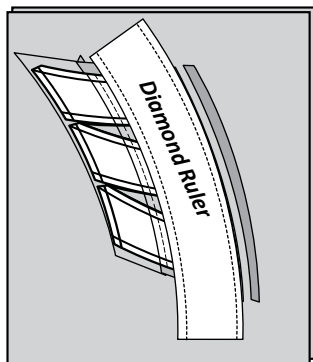
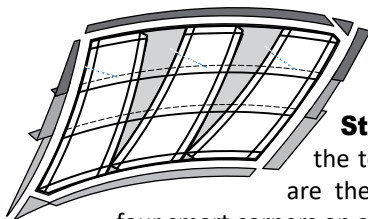
When the piecing is finished, the (TRP) lines are sewn and the excess fabric and paper is trimmed off along the exterior line around the perimeter of each foundation sheet. Don't forget, if you purchased the **Curved Diamond Ruler** to use it when completing the trimming process.



Olfa Spinning Rotary Mat:

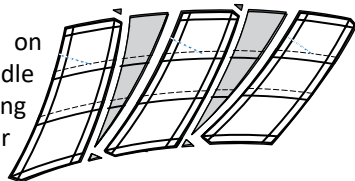
These units will be much easier to cut if you have a Rotary Spinning Mat.

Step 1: Place each unit one at a time on the center of the cutting mat with the *paper-side-up*.



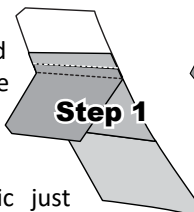
Step 2: The curved edges along the top and the bottom of each unit are the first lines trimmed. Then the four smart corners on all four corners.

Step 3: The the vertical lines on both sides and through the middle are trimmed. The final trimming takes place on the remaining four Smart Corners.

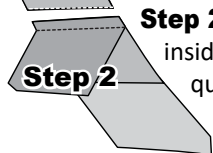


► Part 3: Removing Foundation Papers and Trimming Basting Stitches

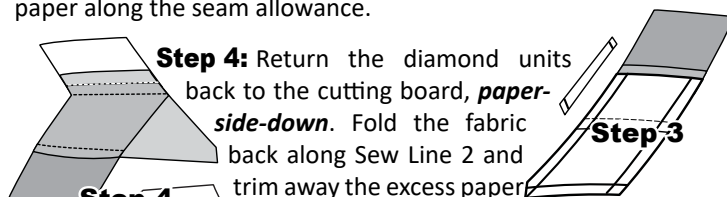
Step 1: Position the diamond paper pieced units on your table *paper-side-down*. Fold the Sec. 3 fabric back along Sew Line 4, so you can visually see the sewn basting stitches.



Step 2: Trim the paper and fabric just inside the Basting Line 3, leaving a scant quarter-inch seam allowance along Sew Line 4. Remove the excess fabric and paper.

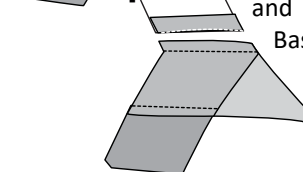


Step 3: Flip the diamonds over, *paper-side-up* and remove the paper along the seam allowance.

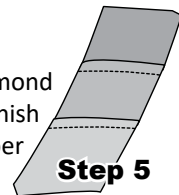


Step 4:

Return the diamond units back to the cutting board, *paper-side-down*. Fold the fabric back along Sew Line 2 and trim away the excess paper and fabric just inside, Basting Stitch Line 1.

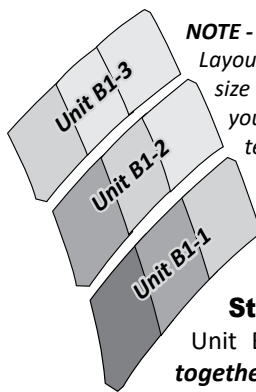


Step 5: Lift the diamond pieces again and finish removing the paper under Sec. 1.



► Assemble Units B1-1, B1-2, & B1-3

Step 1: Arrange the strips into the order shown. One each of Units B1-1, B1-2 & B1-3 are joined to complete (1) diamond.



NOTE - Making Corrections: Paper Piecing Templates Layout Sheet #12 includes (9) left and right traditional size templates for each diamond section. If you find you need to replace a color you can use these templates to cut out the required pieces to rebuild your diamond units.

Step 2: The rows are assembled in the order shown.

Step 3: Position Unit B1-2 over the top of Unit B1-1, the fabrics are facing *right-sides-together*. Match and pin each intersection where the sew lines intersect.

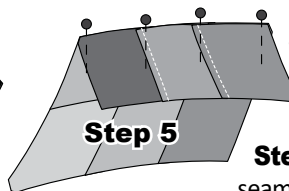
Glue the raw edges and both ends where the Smart Corners fit before you sew the seam.



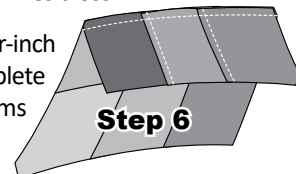
Step 4: Set your sewing machine to sew a quarter inch seam. Place Unit B1-1 on the bottom next to the feed dogs, leaving Unit B1-2 on top. After the sewing is completed the seam is pressed facing towards Unit B1-2.



Step 5: Position Unit B1-3 on top of Unit B1-2. Match and pin each intersection where the sew lines cross.



Step 6: A quarter-inch seam is sewn to complete your pieces. Press the seams facing towards Unit B1-3.



Step 7:

Repeat the sewing steps for each 9-patch unit. Pressing arrows are shown to the left.

